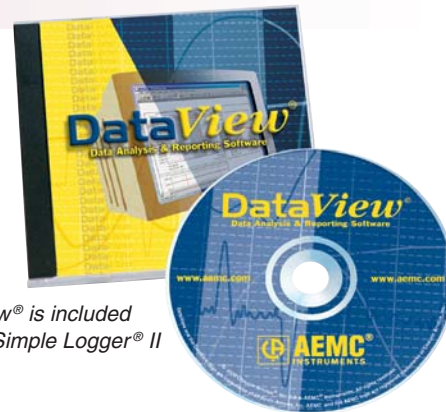


DataView® Simple Logger® II Software

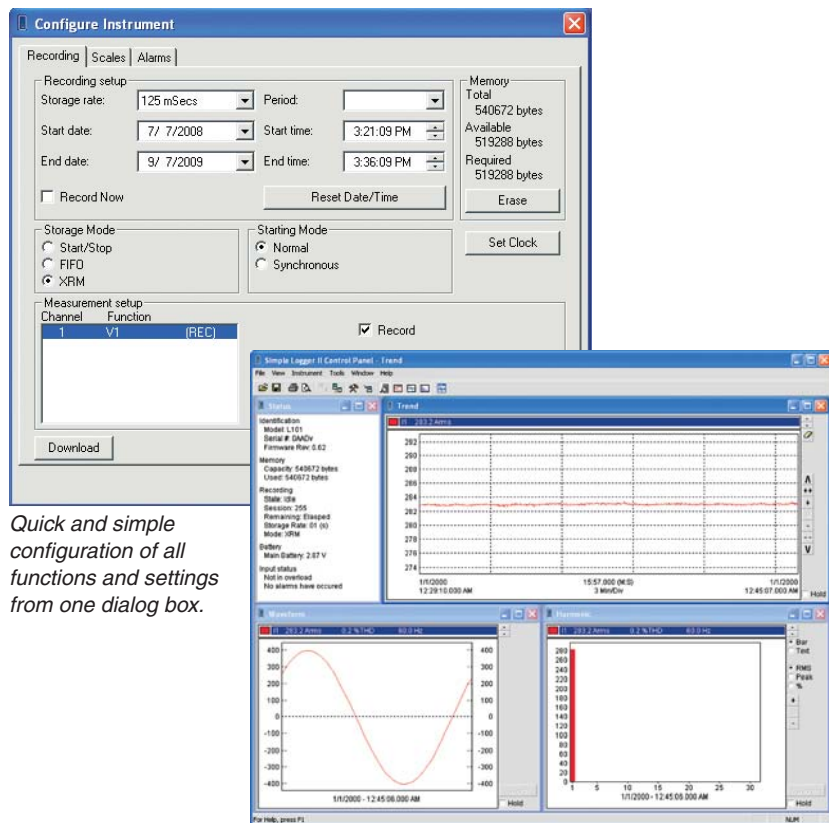
DataView® software provides a convenient way to configure and control power analysis tests from your computer. Through the use of clear and easy-to-use tabbed dialog boxes, all Simple Logger® II functions can be configured and tests can be initiated. Results can be displayed in real time and stored in your PC or the logger. Reports may be printed along with the operator's comments and analysis.



DataView® is included with all Simple Logger® II models.

FEATURES

- ▶ Display and analyze real-time data on your PC
- ▶ Record real-time to your PC
- ▶ Configure all data logger functions and parameters from your PC including sample rate, recording length, channel configuration and more
- ▶ Create and store a library of configurations that can be uploaded to the logger as needed
- ▶ Zoom in and out and pan through sections of the graph to analyze the data
- ▶ Download, display and analyze recorded data
- ▶ Display waveforms, trend graphs, harmonics (AC models) and text summaries, real-time
- ▶ Create custom views and reports
- ▶ Print reports using standard or custom templates you design
- ▶ Free software upgrades



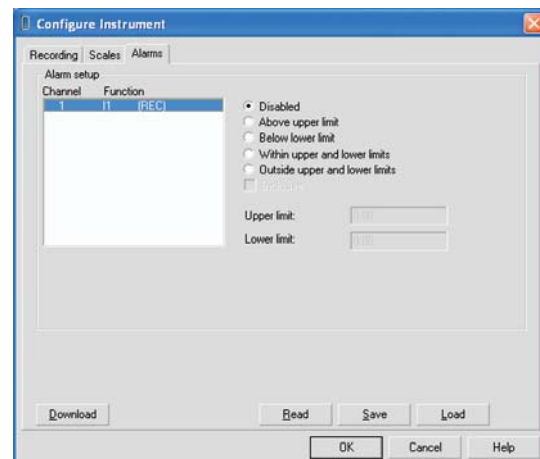
Quick and simple configuration of all functions and settings from one dialog box.

Real-time view of trend, waveform and status screens.

MINIMUM SYSTEM REQUIREMENTS

- ▶ Windows 2000/XP/Vista® operating system
- ▶ 128MB of RAM for Windows 2000 (256MB recommended)
 256MB of RAM for Windows XP
 512MB of RAM for Windows Vista®
- ▶ 80MB of hard disk space (200MB recommended)
- ▶ CD-ROM drive

Windows a registered trademark of Microsoft Corporation in the United States and/or other countries.



Configure all alarm functions with straightforward selections.