

Sentinel® Current Logger Models SDL A301, SDL A302, SDL A303 & SDL A304



205 Westwood Ave
Long Branch, NJ 07740
1-877-742-TEST (8378)
Fax: (732) 222-7088
salesteam@Tequipment.NET



Model SDL A304

The Sentinel® Current Logger Models SDL A301, SDL A302, SDL A303 and SDL A304 are designed for recording AC current through integral flexible current probes for each input.

Features

- True RMS current measurements
- Low-cost, self-contained, portable
- Integral 24" flexible current probes for three-phases
- Measures up to 1000A or 3000A
- Programmable storage mode
- Programmable storage rate
- Records up to 480,000 measurements (1MB)
- 64 samples per cycle
- Includes DataView® software
- Optically isolated USB 2.0 communication

- AC powered with rechargeable NiMH batteries (Models SDL A303 and SDL A304)
- 600V Cat. III, 300V Cat. IV

Applications

- Load monitoring
- HVAC monitoring
- Energy management
- Preventative maintenance

Specifications

MODELS	SDL A301	SDL A302	SDL A303	SDL A304
ELECTRICAL				
Number of Channels	Three	Three	Three	Three
Input Termination	Hard-wired flexible CTs	Hard-wired flexible CTs	Hard-wired flexible CTs	Hard-wired flexible CTs
Current Range	5 to 1000A	15 to 3000A	5 to 1000A	15 to 3000A
Resolution	0.1A	0.25A	0.1A	0.25A
Accuracy	±1% of Reading ± 1.5A			
Sample Rate	64 samples/cycle			
Storage Rate	Programmable from 250ms to 12 hours			
Storage Technique	Stop when full, FIFO, and Extended Recording Mode (XRM™)			
Memory Capacity	480,000 measurements (1MB)			
Communication	USB 2.0 optically isolated			
Controls	One button to turn logger on/off and start/stop recording			
Indicators	Red, Yellow and Green status indicators			
Power Source	Four 1.5V C Alkaline batteries	Four 1.5V C Alkaline batteries	AC power/rechargeable NiMH batteries	AC power/rechargeable NiMH batteries
Battery Life*	100 hours to 45 days	100 hours to 45 days	Power ride through 10 hours	Power ride through 10 hours
MECHANICAL				
Protection Index	IP50			
Dimensions	6.73 x 4.76 x 2.17" (171 x 121 x 55mm)			
Case Material	Polycarbonate UL94 V-2			
ENVIRONMENTAL				
Operating Temperature	14° to 122°F (-10° to 50°C)			
Storage Temperature	-4° to 140°F (-20° to 60°C)			
Relative Humidity	0 to 85% RH			
SAFETY				
Safety Rating	600V Cat. III, 300V Cat. IV			
Double Insulation <input type="checkbox"/>	Yes			

*Dependent on sample rate.



Model SDL A302 three-channel current logger monitoring lighting loads.

Construction



ON/OFF button



24" Flexible Probes

Model SDL A301



USB cable is included with all Sentinel® Data Loggers



120V US wall charger is included with Models SDL A303 & SDL A304

DataView®

DataView® Software – Data Analysis and Reporting Software

Features

- Display and analyze real-time waveform and harmonic data on your PC*
- Display waveforms, trend graphs, harmonics and text summaries
- Configure all data logger functions and parameters from your PC including sample rate, recording length, channel configuration and more
- Create and store a complete library of configurations that can be uploaded to the logger as needed
- Zoom in and out and pan through sections of the graph to analyze the data
- Download, display and analyze recorded data
- Create custom views and reports
- Print reports using standard or custom templates you design
- Free on-line software upgrades

Minimum system requirements

- Windows®98/2000/ME/XP
- 28MB of RAM for Windows®98/2000/ME (256MB recommended)
- 256MB of RAM for Windows®XP
- 35MB of Hard Disk Space (200MB recommended)
- CD-ROM drive

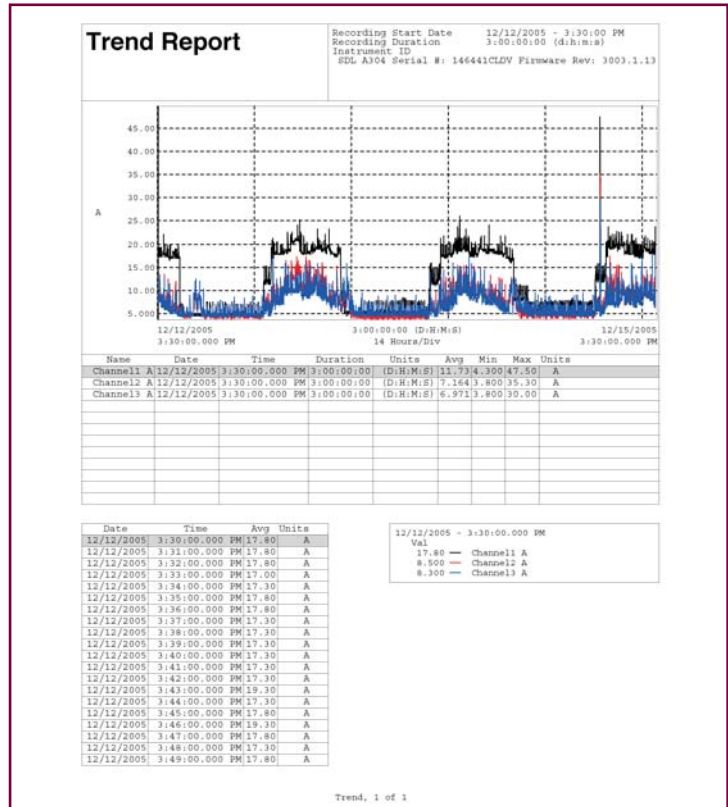
*Real-time data is not stored in the logger, but can be stored in your PC on demand.



DataView® is included with all Sentinel® Loggers

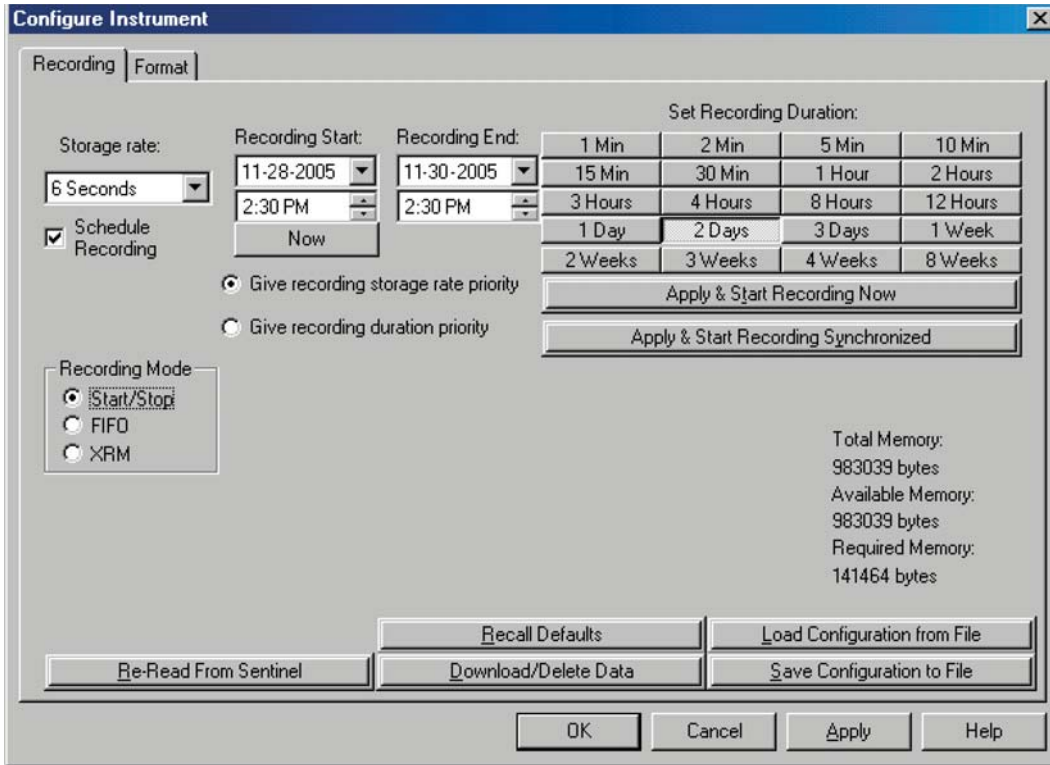


System configuration as well as data retrieval and analysis is easily accomplished using DataView® and Sentinel® connected to your computer using a USB port.

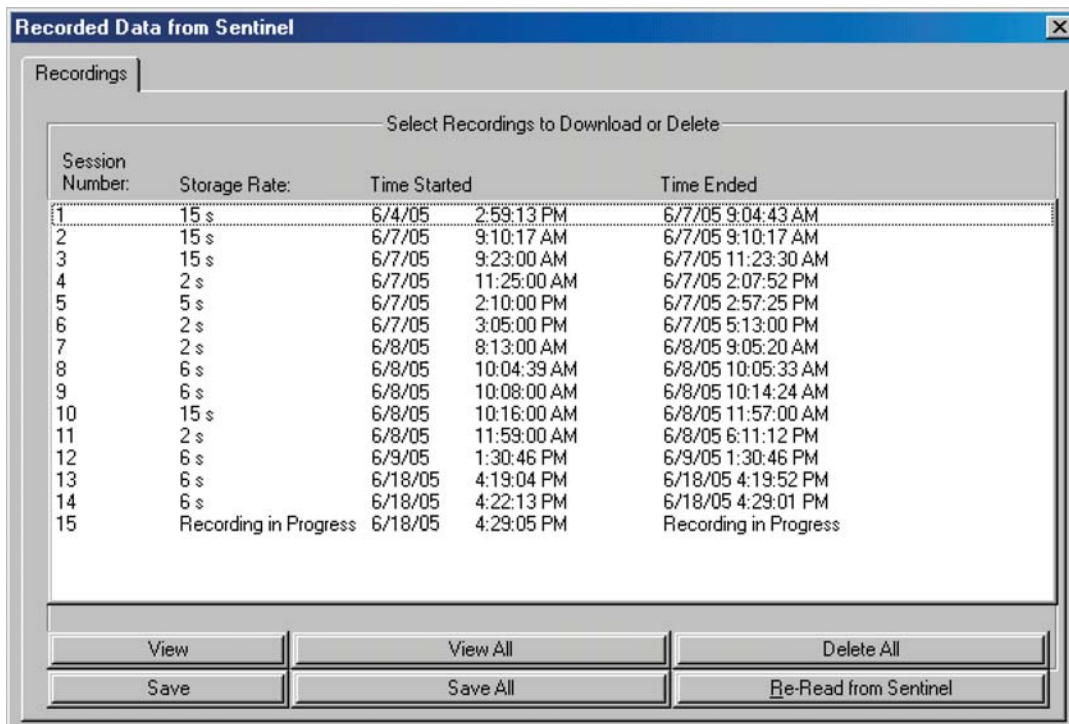


Typical report printout showing graphical text and information from recorded data.

Dataview Displays

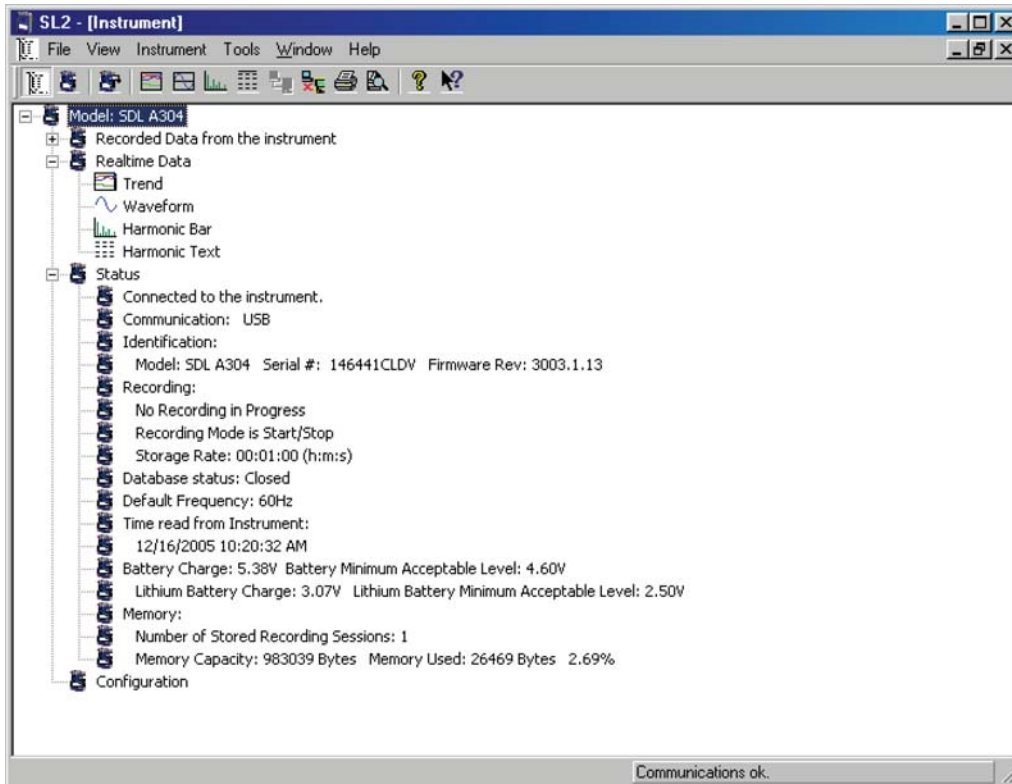


Tabbed configuration dialog boxes allow for easy setup of all recording functions.

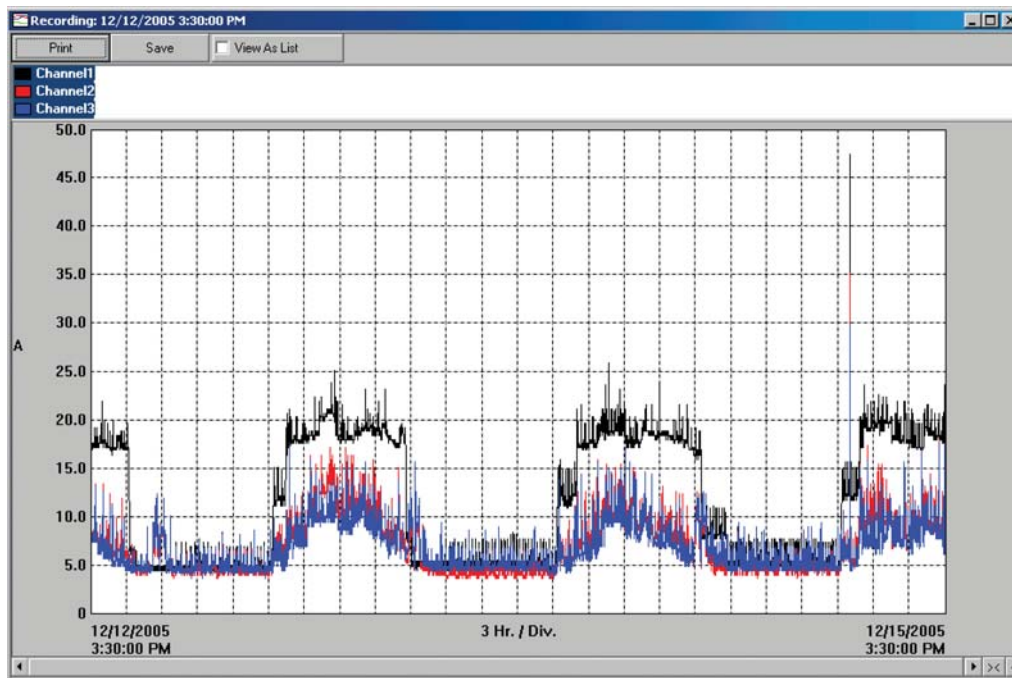


Recorded data dialog box allows clear and easy access to all stored data sessions in the Sentinel® data logger. You can choose an individual session or all sessions to download.

Dataview Displays

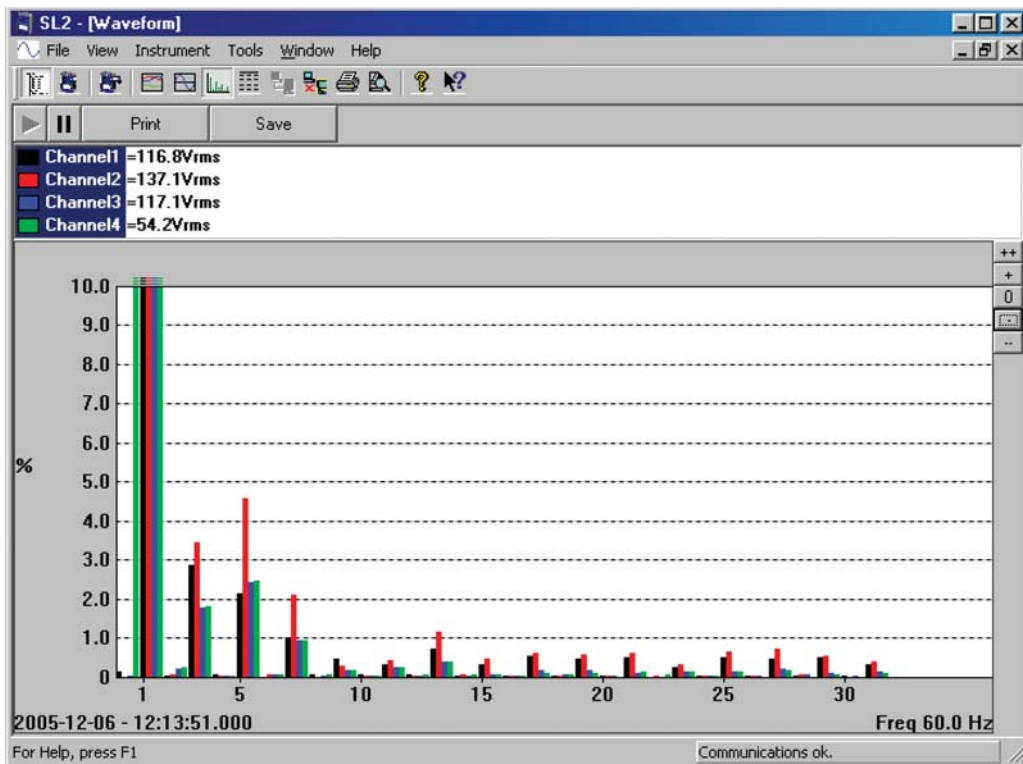


Clear and easy-to-read status update is displayed when DataView® and Sentinel® Loggers connect. From this menu you can view real-time data, download recorded data and configure the Sentinel® Logger.



Typical real-time waveform display of data being monitored or recorded.

Dataview Displays



Harmonic content displayed in bargraph form in real time using DataView® for any or all inputs.

	%		%		%		%
H00	0.4	H01	100.0	H02	0.8	H03	60.1
H04	0.7	H05	22.5	H06	0.4	H07	21.0
H08	1.1	H09	13.6	H10	1.0	H11	12.5
H12	0.6	H13	10.8	H14	0.1	H15	8.8
H16	0.7	H17	8.7	H18	1.4	H19	6.7
H20	0.4	H21	6.8	H22	0.4	H23	6.6
H24	1.0	H25	6.5	H26	0.7	H27	5.3
H28	0.8	H29	6.6	H30	1.0	H31	6.7

12/16/2005 - 11:10:13.000 AM
Freq 60.0 Hz

Harmonic content information can be displayed in a text format for all harmonics out to the 30th.



Comparison Chart

MODEL	SDL V301	SDL V401	SDL A301	SDL A302	SDL A303	SDL A304	SDL A401	SDL A402
Input Type	AC/DC Volts	AC/DC Volts	AC Amps	AC Amps	AC Amps	AC Amps	AC Amps	AC/DC Amps
AC Range	0 to 600VAC	0 to 600VAC	5 to 1000A	15 to 3000A	5 to 1000A	15 to 3000A	5 to 1000A or 15 to 3000A, sensor dependent	Probe dependent
DC Range	0 to 850Vdc	0 to 850Vdc	–	–	–	–	–	Probe dependent
Resolution	0.1V	0.1V	0.1A	0.25A	0.1A	0.25A	0.25A	Probe dependent
Input Termination	Recessed banana jacks	Recessed banana jacks	Hard-wired flexible CTs	Hard-wired flexible CTs	Hard-wired flexible CTs	Hard-wired flexible CTs	BNC	BNC
No. of Inputs	Three	Four	Three	Three	Three	Three	Four	Four
Sample Rate	64 samples/cycle	64 samples/cycle	64 samples/cycle	64 samples/cycle	64 samples/cycle	64 samples/cycle	64 samples/cycle	64 samples/cycle
Memory Capacity	(1MB) 480,000 measurements	(1MB) 480,000 measurements	(1MB) 480,000 measurements	(1MB) 480,000 measurements	(1MB) 480,000 measurements	(1MB) 480,000 measurements	(1MB) 480,000 measurements	(1MB) 480,000 measurements
Power Source	Alkaline batteries	AC power/ NiMH batteries	Alkaline batteries	Alkaline batteries	AC power/ NiMH batteries	AC power/ NiMH batteries	AC power/ NiMH batteries	AC power/ NiMH batteries
Battery Life	100 hours to 90 days	Power ride through 10 hours	100 hours to 45 days	100 hours to 45 days	Power ride through 10 hours	Power ride through 10 hours	Power ride through 10 hours	Power ride through 10 hours
What's Included	Six color-coded leads, DataView® software, batteries, user manual	Eight color-coded leads, DataView® software, batteries, 120V wall charger, user manual	Three hard-wired flexible CTs, DataView® software, batteries, user manual	Three hard-wired flexible CTs, DataView® software, batteries, user manual	Three hard-wired flexible CTs, DataView® software, batteries, 120V wall charger, user manual	Three hard-wired flexible CTs, DataView® software, batteries, 120V wall charger, user manual	DataView® software, batteries, 120V wall charger, user manual	DataView® software, batteries, 120V wall charger, user manual

ORDERING INFORMATION

CATALOG NO.

Sentinel® Current Logger Model SDL A301 (3-Channel, 1000AAC, 24" AmpFlex® attached, four C-cell batteries) . . .	Cat. #2134.15
Sentinel® Current Logger Model SDL A302 (3-Channel, 3000AAC, 24" AmpFlex® attached, four C-cell batteries) . . .	Cat. #2134.16
Sentinel® Current Logger Model SDL A303 (3-Channel, 1000AAC, 24" AmpFlex® attached, rechargeable NiMH batteries, 120V US wall charger)	Cat. #2134.17
Sentinel® Current Logger Model SDL A304 (3-Channel, 3000AAC, 24" AmpFlex® attached, rechargeable NiMH batteries, 120V US wall charger)	Cat. #2134.18
Accessories (Optional)	
Set of one black and one red leads with alligator clips	Cat. #2118.51
Banana (Female) – BNC (Male) Adapter (XM-BB)	Cat. #2118.46
Bag – Large Classic Tool Bag	Cat. #2133.71

Contact Us

United States & Canada:



**205 Westwood Ave
Long Branch, NJ 07740
1-877-742-TEST (8378)
Fax: (732) 222-7088
salesteam@Tequipment.NET**

South America, Central America, Mexico, Caribbean, Australia & New Zealand:

Chauvin Arnoux[®], Inc.
d.b.a. AEMC[®] Instruments
15 Faraday Drive
Dover, NH 03820 USA
(978) 526-7667 • Fax (978) 526-7605

All other countries:

Chauvin Arnoux SCA
190, rue Championnet
75876 Paris Cedex 18, France
33 1 44 85 45 28 • Fax 33 1 46 27 73 89