

AmpFlex™ Flexible Current Probe Simple Logger®

Models AL24-2500, AL36-2500, AL24-5000 & AL36-5000

Specifications

ELECTRICAL

Number of Channels: 1

Measurement Range:

0 to 250Arms; 0 to 2500Arms

0 to 500Arms; 0 to 5000Arms

Input:

5 to 250 or 5 to 2500Arms or

5 to 500, 5 to 5000Arms

Internally Switch Selectable

Input Sensor:

AmpFlex™ 24" or 36"

Flexible Current Sensor

Resolution:

250A range: 125mA max

500A range: 250mA max

2500A range: 1.25A max

5000A range: 2.5A max

Accuracy*: 1% of Reading + Resolution
(see inside back cover for details)

Sample Rate: 4096/hr maximum

Storage Technique:

Time Extension Recording™ (TXR™)

Data Storage: 8192 readings

Power: 9V Alkaline battery

Battery Life:

Up to 6 months of recording @ 25°C

Output: RS-232 via DB-9 connector

Indicators: Red LED light flashes once every 2 seconds in LOGGING mode, and is off in OFF mode. LED is on continuously in overload condition

Controls: One button used to start and stop recording sessions and to turn the data logger on and off

Working Voltage: 600VAC maximum

MECHANICAL

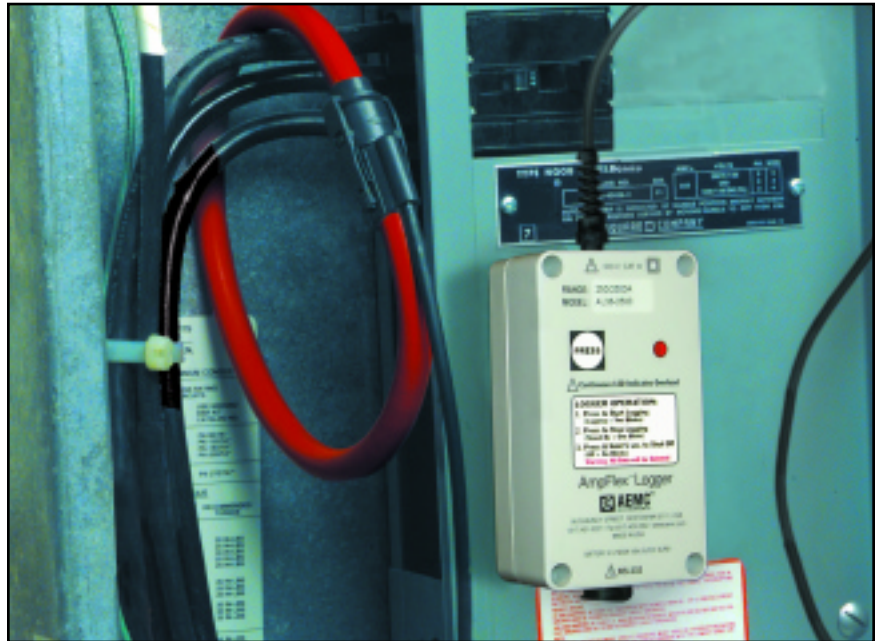
Size:

Sensor: Diameter 0.5" (12.5mm)

Logging Module:

1 9/16 x 2 1/2 x 4 1/2"

(40.64 x 63.5 x 114.3mm)



Weight: (with battery) 15.5 oz (439g)

Mounting: Velcro® pads supplied loose

Maximum Conductor Size:

24" length: 8" diameter conductor

36" length: 12" diameter conductor

ENVIRONMENTAL

Operating Temperature:

-4 to +158°F (-20 to +70°C)

Storage Temperature:

-4 to +174°F (-20 to +80°C)

Relative Humidity:

5 to 95% non-condensing



Features

- Four models to choose from
- True RMS recording (250 & 2500Arms) (500 & 5000Arms)
- Self contained — no exposed connections
- Weatherproof NEMA 4X, IP65 rated
- Flexible sensor — fits anywhere
- Records for up to 6 months
- Scale automatically selected in software
- RS-232 output

Applications

- Load profiling
- Machine load monitoring
- Substation monitoring

ORDERING INFORMATION

CATALOG NO.

Simple Logger® Model AL24-2500, RMS Current (250/2500A), 24" AmpFlex™ Cat. #2113.72

Simple Logger® Model AL36-2500, RMS Current (250/2500A), 36" AmpFlex™ Cat. #2113.73

Simple Logger® Model AL24-5000, RMS Current (500/5000A), 24" AmpFlex™ Cat. #2113.74

Simple Logger® Model AL36-5000, RMS Current (500/5000A), 36" AmpFlex™ Cat. #2113.75

All Flexible Current Probe Loggers are supplied with software (CD-ROM), 6 ft DB-9 RS-232 serial cable, 9V Alkaline battery and user manual



Simple Logger® Software

Features

- Very easy to setup and use — no programming required
- Statistics appear on screen: Max, Min, Avg, Date and Time
- On-Line display of data logger values
- Zoom capability with automatic statistics update
- User keyed text annotations
- Automatically displays values at the cursor position
- Export data to spreadsheet and database software
- Print both graphs and tabular listings
- Paste graphs into other applications
- Programmable scale and units for all DC loggers. Automatic selection for AC loggers
- User programmable High and Low limits (Model L215)
- User programmable record modes – inside or outside of limits (Model L215)
- Automatic baud rate selection (version 6.0 or later)

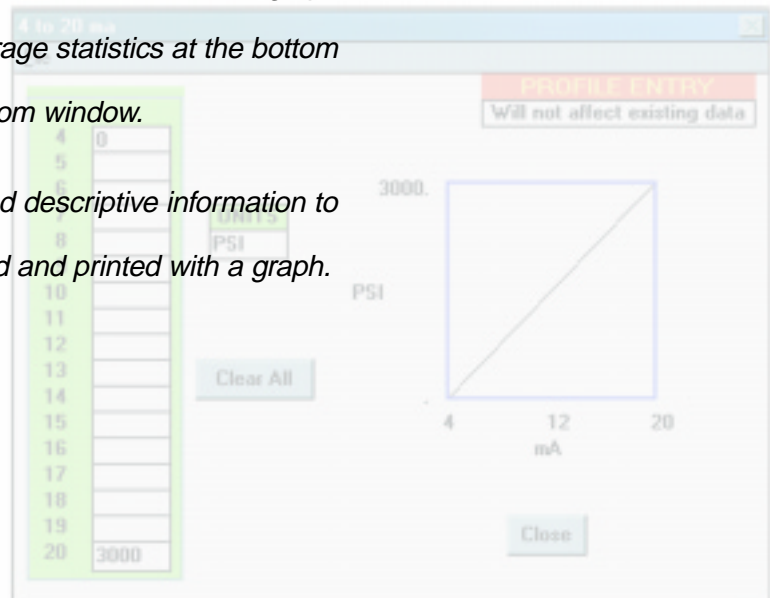
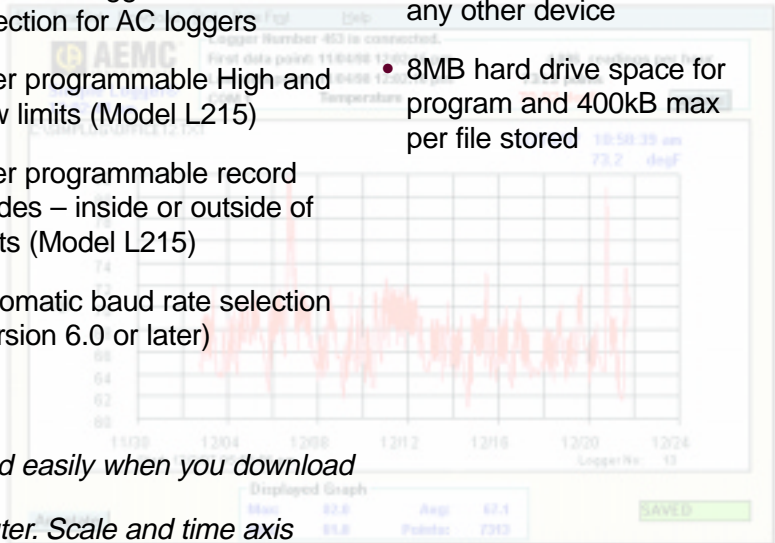
Computer Requirements

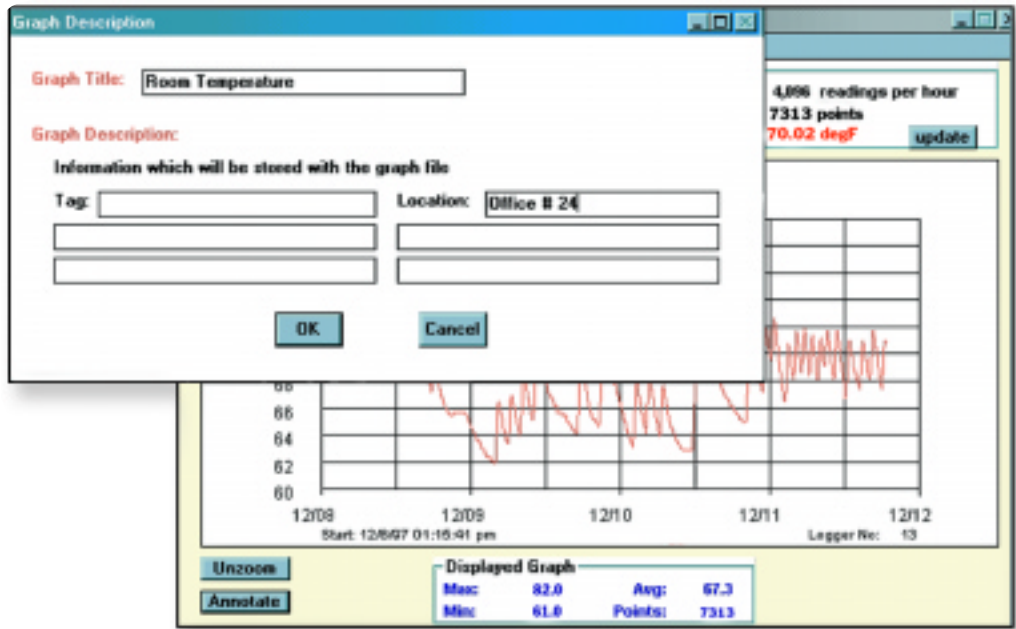
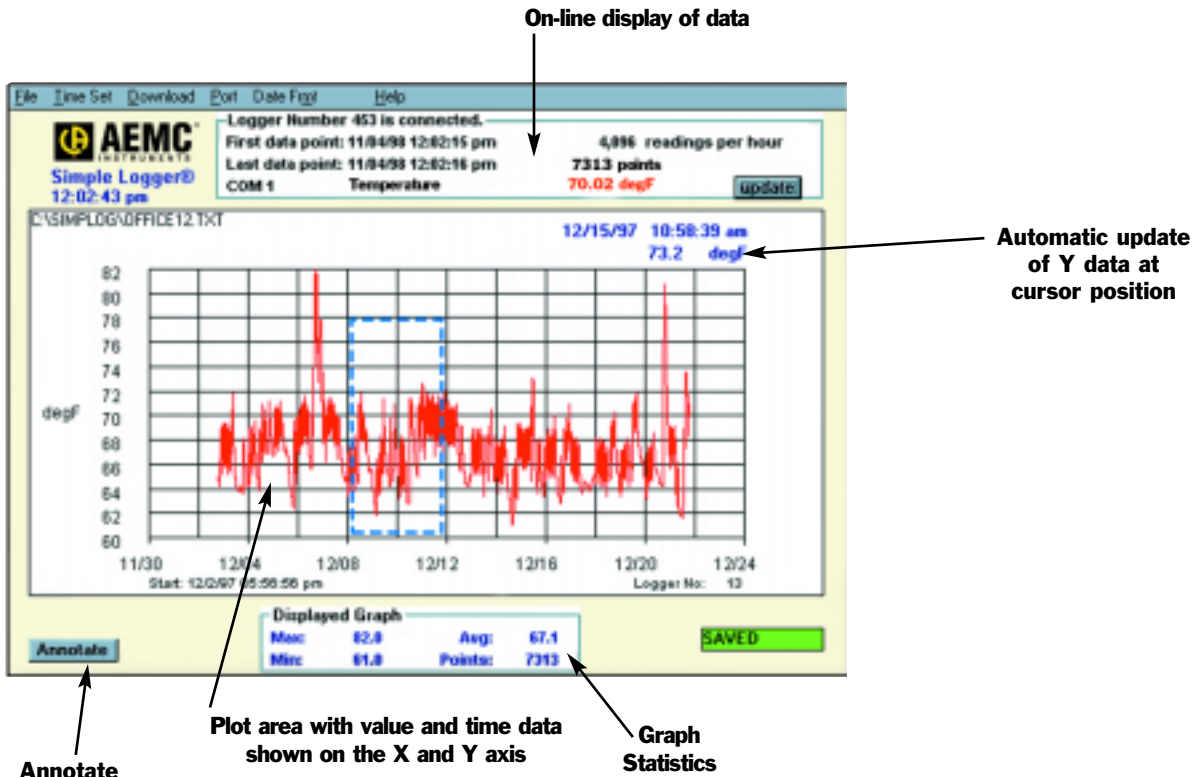
- 486 or higher
- 8MB of RAM
- Windows®95/98/2000/ME/XP or Windows®NT
- 1 serial port not in use by any other device
- 8MB hard drive space for program and 400kB max per file stored

Plot graphs and view statistics quickly and easily when you download data from Simple Logger® to your computer. Scale and time axis update automatically.

Click and drag your mouse to zoom up the desired area of the graph for better viewing. The Min, Max and Average statistics at the bottom of the graph update automatically with zoom window.

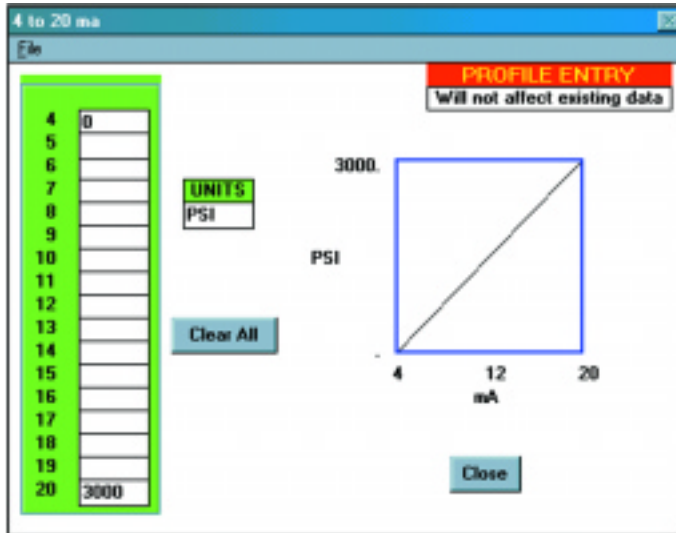
Click the Annotate button to add a title and descriptive information to your graph. This information can be stored and printed with a graph.



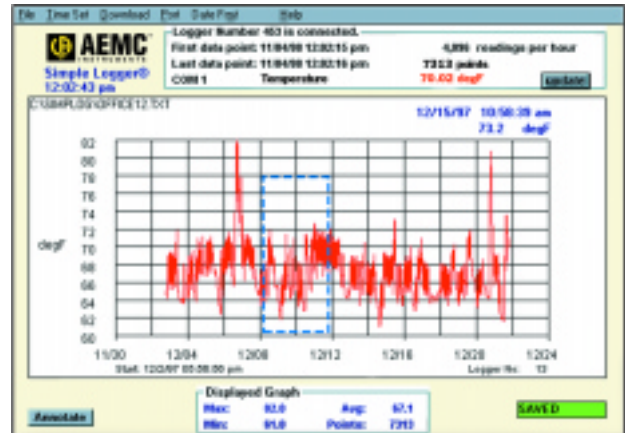


Click the Annotate button to add a title and descriptive information to your graph. This information can be stored and printed with a graph.

Simple Logger® Software



Click the scale button in the file menu to create custom scales and engineering units for DC voltage (Models L410 & L430) and DC current loggers (Model L320).



Click and drag your mouse to zoom up the desired area of the graph for better viewing. The Min, Max and Average statistics at the bottom of the graph update automatically when the graph is zoomed.

Contact Us

United States & Canada:

Chauvin Arnoux®, Inc.
d.b.a. AEMC® Instruments
200 Foxborough Blvd.
Foxborough, MA 02035 USA
(508) 698-2115 • Fax (508) 698-2118
www.aemc.com

Customer Support – for placing an order, obtaining price & delivery:
customerservice@aemc.com

Sales Department – for general sales information:
sales@aemc.com

Repair and Calibration Service – for information on repair & calibration, obtaining a user manual:
repair@aemc.com

Technical and Product Application Support – for technical and application support:
techinfo@aemc.com

Webmaster – for information regarding www.aemc.com:
webmaster@aemc.com

South America, Central America, Mexico, Caribbean, Australia & New Zealand:

Chauvin Arnoux®, Inc.
d.b.a. AEMC® Instruments
15 Faraday Drive
Dover, NH 03820 USA
(978) 526-7667 • Fax (978) 526-7605
export@aemc.com
www.aemc.com

All other countries:

Chauvin Arnoux SCA
190, rue Championnet
75876 Paris Cedex 18, France
33 1 44 85 45 28 • Fax 33 1 46 27 73 89
info@chauvin-arnoux.com
www.chauvin-arnoux.com