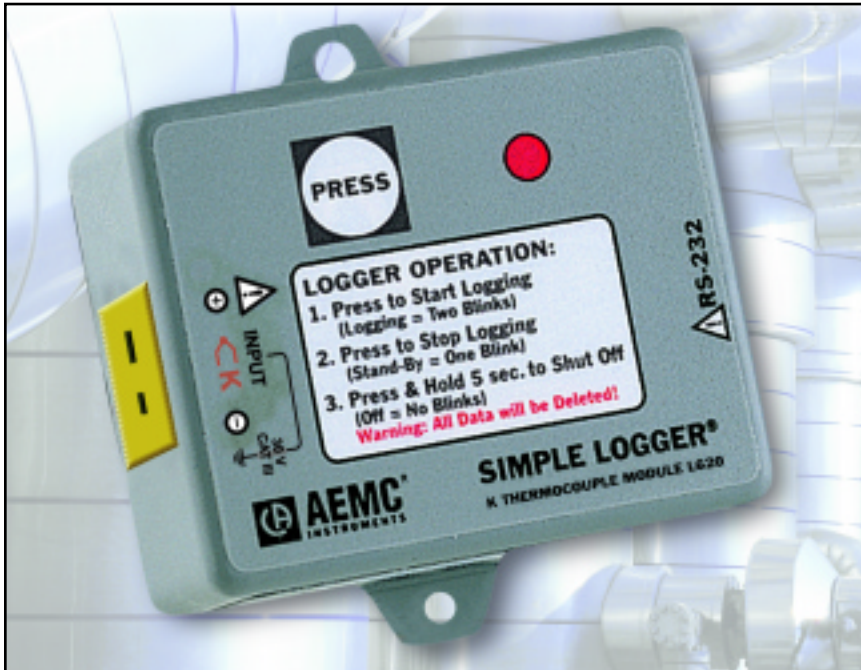


Thermocouple Temperature Simple Logger® Models L610, L620 & L630



Specifications

ELECTRICAL

Number of Channels: 1

Measurement Range:

J: 32 to 1380°F (0 to 750°C)

K: -325 to 2280°F (-200 to +1250°C)

T: -325 to +660°F (-200 to +350°C)

Input: J, K or T Thermocouple

Input Connection: Miniature color coded thermocouple jacks

Resolution: 12 bit

Better than 0.5°C

Accuracy*: ±0.5%R + T/C Accuracy
(see inside back cover for details)

Sample Rate: 4096/hr maximum

Storage Technique:

Time Extension Recording™ (TXR™)

Data Storage: 16,384 readings

Power: 9V Alkaline battery

Battery Life:

1 year for continuous recording @ 25°C

Output: RS-232 via DB-9 connector

Indicators: Red LED flashes once every 2 seconds in STANDBY mode, twice every 2 seconds in LOGGING mode, and is off in OFF mode

Controls: One membrane switch used to start and stop recording sessions and to turn the data logger on and off

MECHANICAL

Size: 27/8 x 25/16 x 15/8"
(73.0 x 58.75 x 41.27mm)

Weight: 5 oz (140g)

Mounting: Base plate mounting holes or Velcro® pads supplied loose

ENVIRONMENTAL

Operating Temperature:

-4 to +158°F (-20 to +70°C)

Storage Temperature:

-4 to +174°F (-20 to +80°C)

Relative Humidity:

5 to 95% non-condensing

Safety: EN 61010, 30V, Cat. III

Features

- Three models to choose from:
Model L610 (Type J)
32 to 1380°F (0 to 750°C)
Model L620 (Type K)
-325 to 2280°F (-200 to +1250°C)
Model L630 (Type T)
-325 to +660°F (-200 to +350°C)
- Inputs via color coded miniature thermocouple jacks
- RS-232 output
- One button operation
- 12 bit resolution

Applications

- Process control monitoring
- Wave soldering
- Refrigeration monitoring

ORDERING INFORMATION

CATALOG NO.

Simple Logger® Model L610, Temperature (J Thermocouple) Cat. #2116.15

Simple Logger® Model L620, Temperature (K Thermocouple)..... Cat. #2116.16

Simple Logger® Model L630, Temperature (T Thermocouple)..... Cat. #2116.17

All Thermocouple Temperature Simple Loggers® are supplied with software (CD-ROM), 6 ft DB-9 RS-232 serial cable, 9V Alkaline battery and user manual

Simple Logger® Software

Features

- Very easy to setup and use — no programming required
- Statistics appear on screen: Max, Min, Avg, Date and Time
- On-Line display of data logger values
- Zoom capability with automatic statistics update
- User keyed text annotations
- Automatically displays values at the cursor position
- Export data to spreadsheet and database software
- Print both graphs and tabular listings
- Paste graphs into other applications
- Programmable scale and units for all DC loggers. Automatic selection for AC loggers
- User programmable High and Low limits (Model L215)
- User programmable record modes – inside or outside of limits (Model L215)
- Automatic baud rate selection (version 6.0 or later)

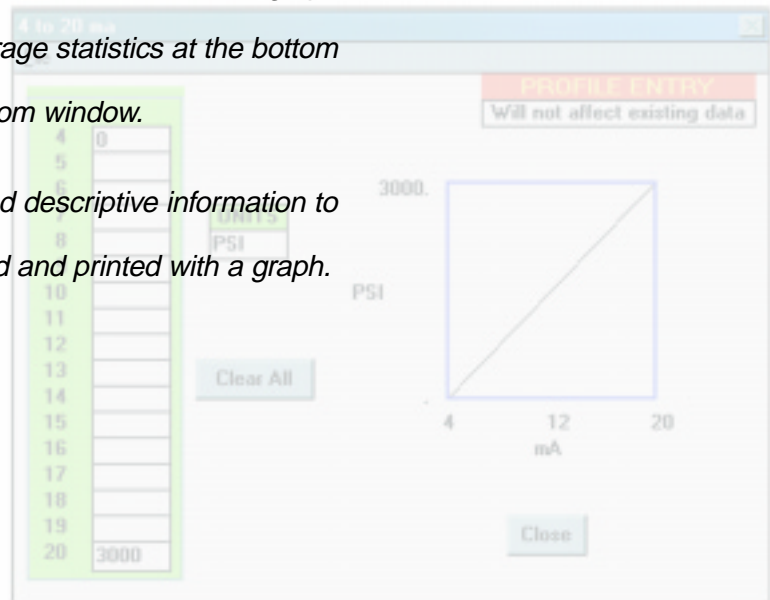
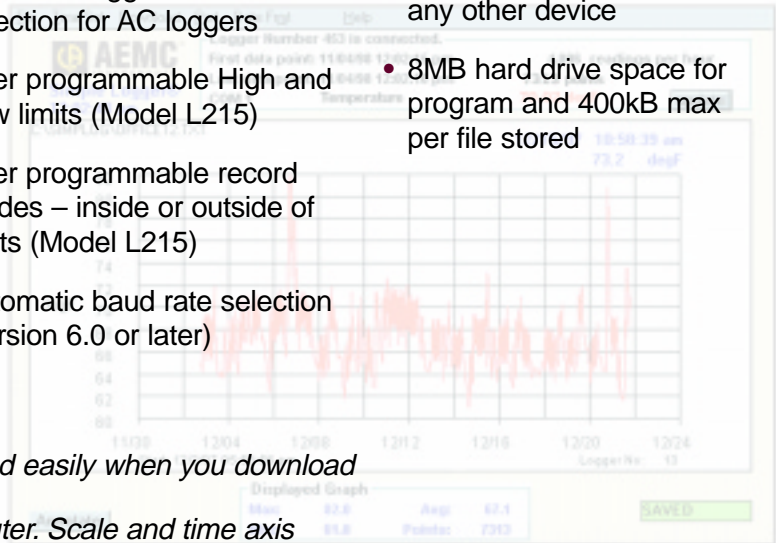
Computer Requirements

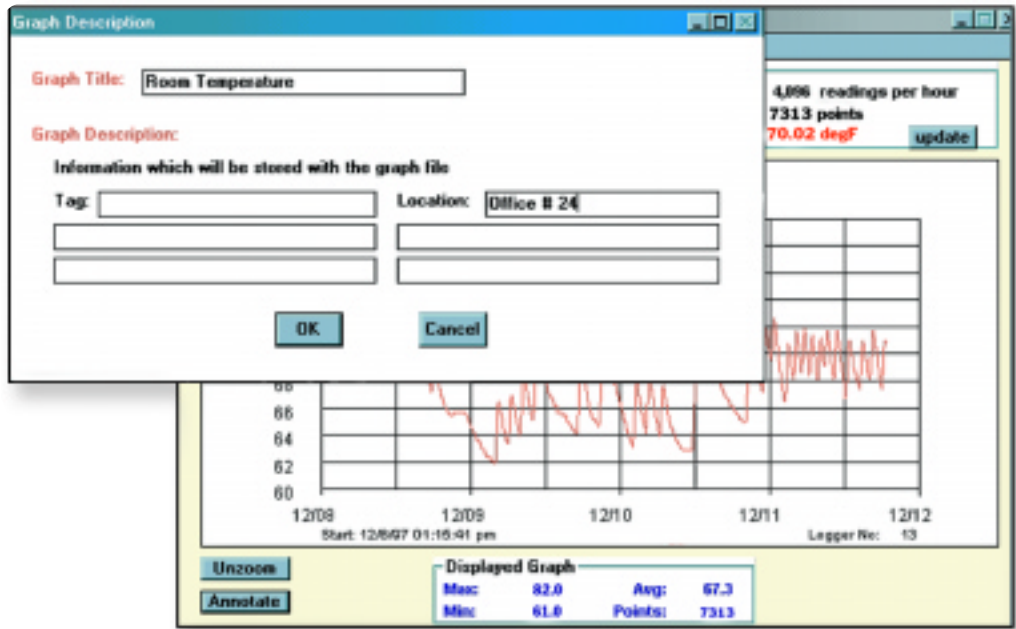
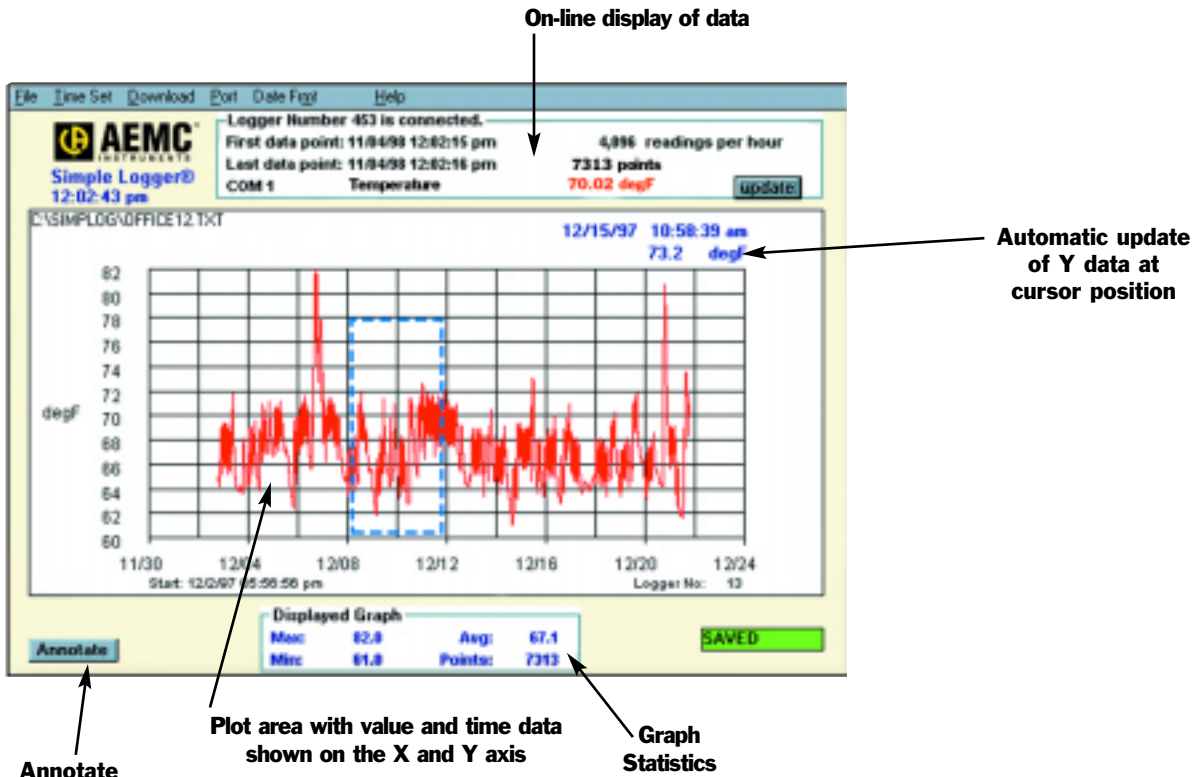
- 486 or higher
- 8MB of RAM
- Windows®95/98/2000/ME/XP or Windows®NT
- 1 serial port not in use by any other device
- 8MB hard drive space for program and 400kB max per file stored

Plot graphs and view statistics quickly and easily when you download data from Simple Logger® to your computer. Scale and time axis update automatically.

Click and drag your mouse to zoom up the desired area of the graph for better viewing. The Min, Max and Average statistics at the bottom of the graph update automatically with zoom window.

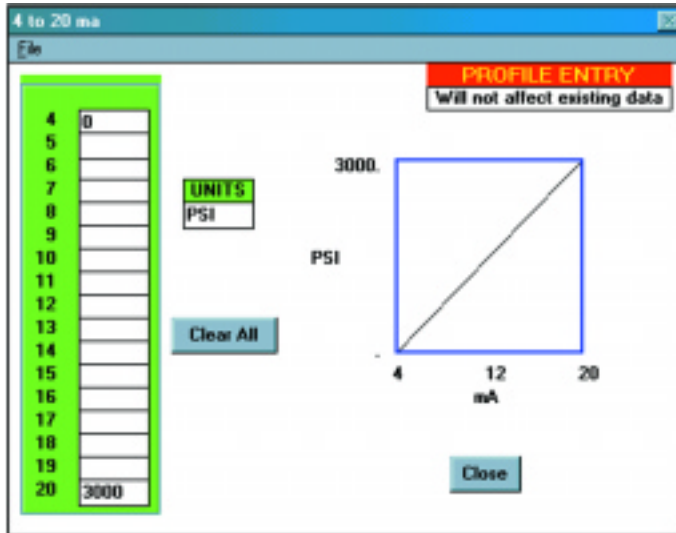
Click the Annotate button to add a title and descriptive information to your graph. This information can be stored and printed with a graph.



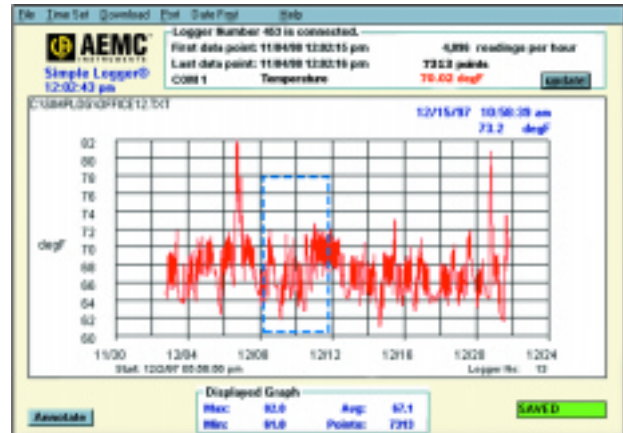


Click the Annotate button to add a title and descriptive information to your graph. This information can be stored and printed with a graph.

Simple Logger® Software



Click the scale button in the file menu to create custom scales and engineering units for DC voltage (Models L410 & L430) and DC current loggers (Model L320).



Click and drag your mouse to zoom up the desired area of the graph for better viewing. The Min, Max and Average statistics at the bottom of the graph update automatically when the graph is zoomed.

Contact Us

United States & Canada:

Chauvin Arnoux®, Inc.
d.b.a. AEMC® Instruments
200 Foxborough Blvd.
Foxborough, MA 02035 USA
(508) 698-2115 • Fax (508) 698-2118
www.aemc.com

Customer Support – for placing an order, obtaining price & delivery:
customerservice@aemc.com

Sales Department – for general sales information:
sales@aemc.com

Repair and Calibration Service – for information on repair & calibration, obtaining a user manual:
repair@aemc.com

Technical and Product Application Support – for technical and application support:
techinfo@aemc.com

Webmaster – for information regarding www.aemc.com:
webmaster@aemc.com

South America, Central America, Mexico, Caribbean, Australia & New Zealand:

Chauvin Arnoux®, Inc.
d.b.a. AEMC® Instruments
15 Faraday Drive
Dover, NH 03820 USA
(978) 526-7667 • Fax (978) 526-7605
export@aemc.com
www.aemc.com

All other countries:

Chauvin Arnoux SCA
190, rue Championnet
75876 Paris Cedex 18, France
33 1 44 85 45 28 • Fax 33 1 46 27 73 89
info@chauvin-arnoux.com
www.chauvin-arnoux.com