

# SENTINEL® DATA LOGGERS

## Voltage & Current

### Sentinel® Voltage Loggers

Model SDL V301



### Sentinel® Current Loggers

Model SDL A302

## FEATURES

- True RMS measurements
- Low-cost, self-contained and portable
- Differential three-phase inputs (Voltage Loggers)
- Integral flexible current probes for three-phases (Current Loggers)
- Measures up to 3000A (Current Loggers)
- Stores up to 480,000 points (1MB)
- 64 samples per cycle
- Includes DataView® software for data storage, real-time display analysis and report generation
- USB communication
- 600V Cat. III

## SPECIFICATIONS

MODEL	SDL V301	SDL V401	SDL A301	SDL A302	SDL A303	SDL A304
<b>ELECTRICAL</b>						
Number of Channels	Three	Four	Three	Three	Three	Three
Input Termination	Recessed banana jacks	Recessed banana jacks	Hard-wired flexible CTs	Hard-wired flexible CTs	Hard-wired flexible CTs	Hard-wired flexible CTs
Voltage Range	0 to 600VAC/ 0 to 850VDC	0 to 600VAC/ 0 to 850VDC	-	-	-	-
Current Range	-	-	5 to 1000A	15 to 3000A	5 to 1000A	15 to 3000A
Resolution	0.1V	0.1V	0.25A	0.25A	0.25A	0.25A
Accuracy	±(0.25% of Reading + 0.6V) from 85 to 600V ±(1.0% of Reading + 0.6V) from 5 to 85V		±(1% of Reading + 1.5A)	±(1% of Reading + 1.5A)	±(1% of Reading + 1.5A)	±(1% of Reading + 1.5A)
Sample Rate	64 samples/cycle					
Storage Rate	Programmable selection of 250ms to 12 hours					
Recording Method	Stop when full, FIFO, and Extended Recording Mode (XRM™)*					
Memory Capacity	1MB, stores 480,000 readings					
Communication	USB 2.0 optically isolated to 5500Vrms					
Controls	One button to turn logger on/off and start/stop recording					
Indicators	Red, yellow and green status indicators					
Power Source	Four 1.5V C Alkaline batteries	AC power/rechargeable NiMH batteries	Four 1.5V C Alkaline batteries	Four 1.5V C Alkaline batteries	AC power/rechargeable NiMH batteries	AC power/rechargeable NiMH batteries
Battery Life**	100 hours to 90 days	Power ride through 10 hours	100 hours to 45 days	100 hours to 45 days	Power ride through 10 hours	Power ride through 10 hours
<b>MECHANICAL</b>						
Protection Index	IP50	IP50	IP50	IP50	IP50	IP50
Dimensions	6.732 x 4.764 x 2.165"	6.732 x 4.764 x 2.165"	6.732 x 4.764 x 2.165"	6.732 x 4.764 x 2.165"	6.732 x 4.764 x 2.165"	6.732 x 4.764 x 2.165"
Weight	1.8 lbs (0.8kg)	1.8 lbs (0.8kg)	3.2 lbs (1.4kg)	3.2 lbs (1.4kg)	3.2 lbs (1.4kg)	3.2 lbs (1.4kg)

### \*Extended Recording Mode (XRM™)

This unique recording mode provides the opportunity to continuously record over long periods of time by reducing the stored samples of the oldest data and maintaining matching resolution for the newest data. Each time the memory fills up using XRM™ every other of the oldest stored samples is discarded making room for newer samples. This process continues until the recording is manually stopped.

\*\*Dependent on sample rate.

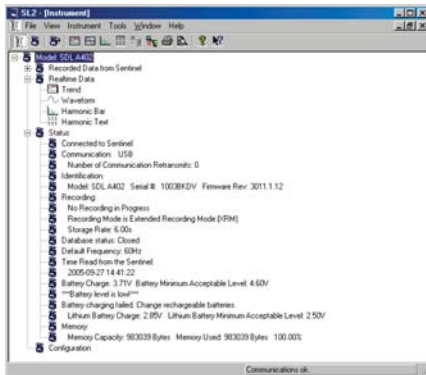
Consult our website as future models become available.

# SOFTWARE DataView®

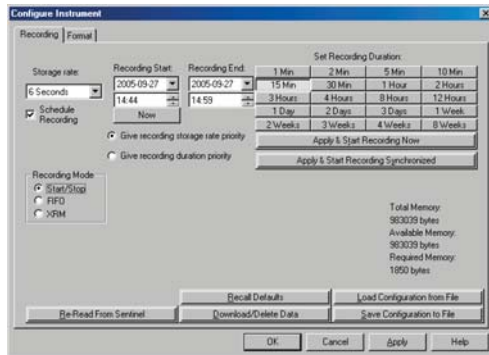
## Data Analysis and Reporting Software



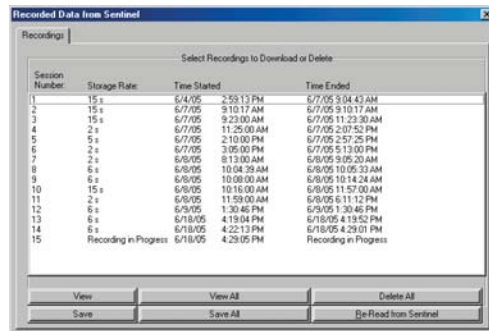
DataView® is included with all Sentinel® Loggers



Clear and easy-to-read status update when DataView® and Sentinel® Loggers connect.



Dialog box allows for clear and easy access to all stored data.

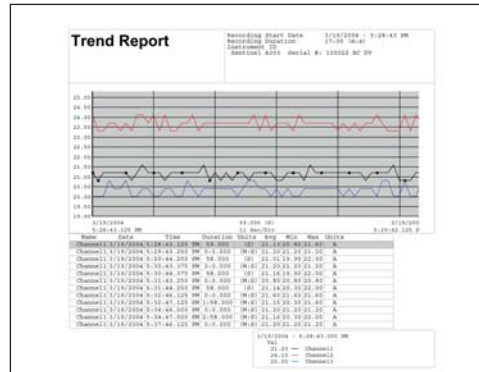


Two tabbed dialog boxes allow for easy setup of all recording functions.

- Display and analyze real-time data on your PC
- Configure all data logger functions and parameters from your PC including sample rate, recording length, channel configuration and more
- Create and store a complete library of configurations that can be uploaded to the logger as needed
- Zoom in and out and pan through sections of the graph to analyze the data
- Download, display and analyze recorded data
- Display waveforms, trend graphs, harmonics and text summaries
- Print reports using standard or custom templates you design

### Minimum System Requirements:

- Windows®98/2000/ME/XP
- 128MB of RAM Windows®98/2000/ME (256MB recommended)
- 256MB of RAM for Windows®XP
- 35MB of Hard Disk Space (200MB recommended)
- CD-ROM drive



## ORDERING INFORMATION

2134.10	Sentinel® Voltage Logger Model SDL V301 (3-Channel, 600Vac, three black and red leads, four C-cell batteries) . . . . .	\$ 695.00
2134.11	Sentinel® Voltage Logger Model SDL V401 (4-Channel, 600Vac, color-coded leads, rechargeable NiMH batteries, US 120V wall charger) . . . . .	\$ 945.00
2134.15	Sentinel® Current Logger Model SDL A301 (3-Channel, 1000Aac, four C-cell batteries) . . . . .	\$ 1,095.00
2134.16	Sentinel® Current Logger Model SDL A302 (3-Channel, 3000Aac, four C-cell batteries) . . . . .	\$ 1,295.00
2134.17	Sentinel® Current Logger Model SDL A303 (3-Channel, 1000Aac, 24" AmpFlex™ attached, rechargeable NiMH batteries, US 120V wall charger) . . . . .	\$ 1,245.00
2134.18	Sentinel® Current Logger Model SDL A304 (3-Channel, 3000Aac, 24" AmpFlex™ attached, rechargeable NiMH batteries, US 120V wall charger) . . . . .	\$ 1,445.00



For All Your Electrical Test & Measurement Instruments



Call the AEMC® Instruments Technical Assistance Hotline for immediate consultation with an applications engineer: **(800) 343-1391**

Chauvin Arnoux®, Inc. d.b.a AEMC® Instruments • 200 Foxborough Blvd. • Foxborough, MA 02035 USA • (800) 343-1391 • (508) 698-2115 • Fax (508) 698-2118

Visit our website at [www.aemc.com](http://www.aemc.com)

950.BR-SENTINEL 03/05 Printed in the USA