

N2860A 3000 Series Scope Connect Software N2861A Communications Module

Data Sheet

N2860A Scope Connect software

- Easily manage and transfer data using the 3000 Series' built-in USB port or the optional GPIB and RS-232 ports
- Fully control your 3000 Series oscilloscopes from your PC with a GUI that simulates the scope front panel
- Don't miss any data – the virtual display is a pixel-by-pixel equivalent of the current scope display
- Choose between Waveform view, Measurement view, or Data view
- Easily organize acquisition data from the scope in tabular format and export it to spreadsheet applications such as Microsoft® Excel
- Access all 18 individual channel measurements from your PC



N2861A communications module

- Provides RS-232 and GPIB connectivity
- Outputs results of pass/fail (limit) testing
- Provides remote control using the 3000 Series' SCPI command set*.
- * SCPI programmability is not available using the 3000 Series built-in USB port.



Agilent Technologies

An affordable way to transfer data and control your scope from a PC

The N2860A Scope Connect software and N2861A communications module provide an affordable way to transfer data from your 3000 Series economy oscilloscope and control it remotely with an external PC. Ideal for use in a lab environment, the N2860A gives you the ability to simultaneously control multiple 3000 Series oscilloscopes from a single PC.

The N2860A Scope Connect software's easy-to-use graphical user interface (GUI) lets you fully control the scope from your PC with simple mouse clicks. This software provides the easiest way to export data, measurements, pass/fail information, and screen shots for analysis or printing. You can install Scope Connect software onto your PC easily from the CD.

A license code, based on the serial number of your 3000 Series oscilloscope, is provided with the N2860A software. This license code allows the Scope Connect software to interact with your 3000 Series oscilloscope.

The N2861A communications module fits easily onto the back panel of your 3000 Series oscilloscope. A copy of the N2860A Scope Connect software is shipped standard with each N2861A communications module. The N2861A acts as a hardware license key for the Scope Connect software.

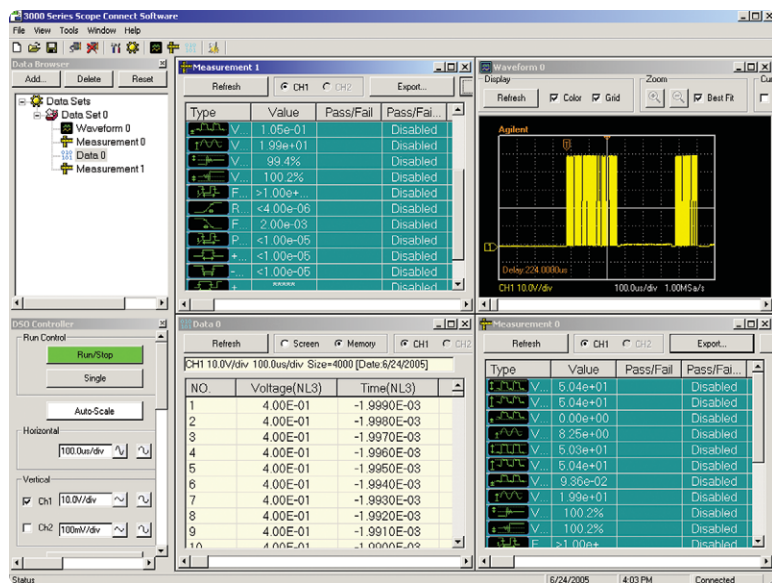


Figure 1. 3000 Series Scope Connect software in quad-panel display showing Waveform, Measurement and Data views simultaneously.

See just how easy it is to use Scope Connect software

Data Browser window

The Data Browser window lets you select any number of waveform, measurement, or data views. You can save the views collectively in a data sheet file to be stored offline, or move them to another PC running Scope Connect software for further analysis or printing.

DSO Controller window

The DSO Controller Window gives you access to the basic acquisition system of the scope. You can access horizontal and vertical settings as well as run control (auto-scale, run, single) from this window.

Virtual Panel

The Virtual Panel, which you can launch from the DSO Controller window, is formatted to look exactly like the front panel of a 3000 Series scope. The Virtual Panel provides a familiar and intuitive way to drive the scope from a remote PC. You can access the full functionality of your 3000 Series oscilloscope from this view. You can customize the display refresh rates – from 500 ms to 10 s – to meet your needs. You can easily save screenshots to your PC, or send them directly to a printer for either color or black-and-white printouts.

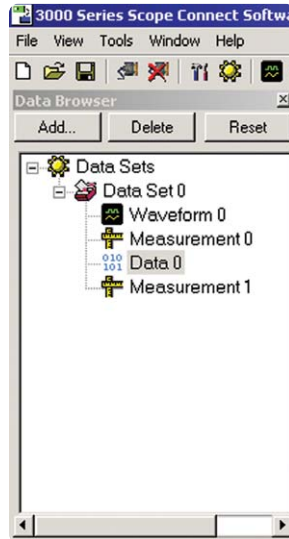


Figure 2. Data Browser window

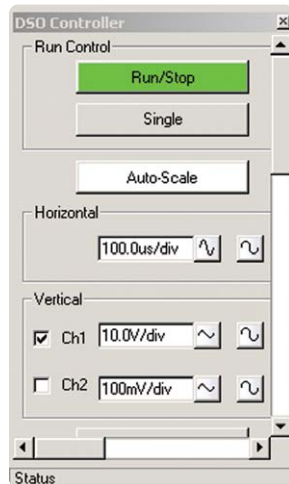


Figure 3. DSO Controller window

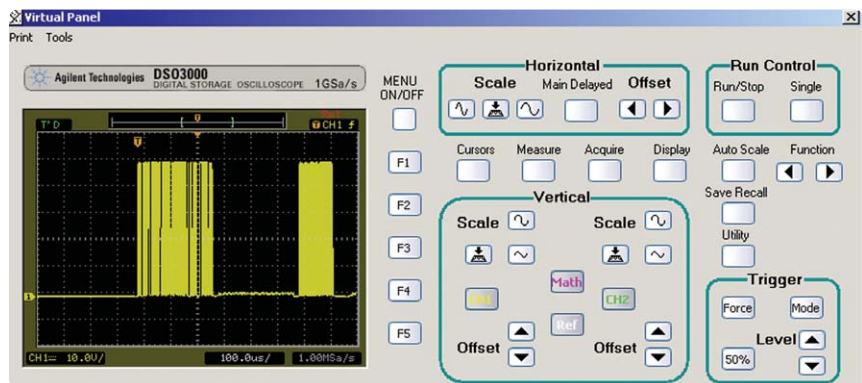
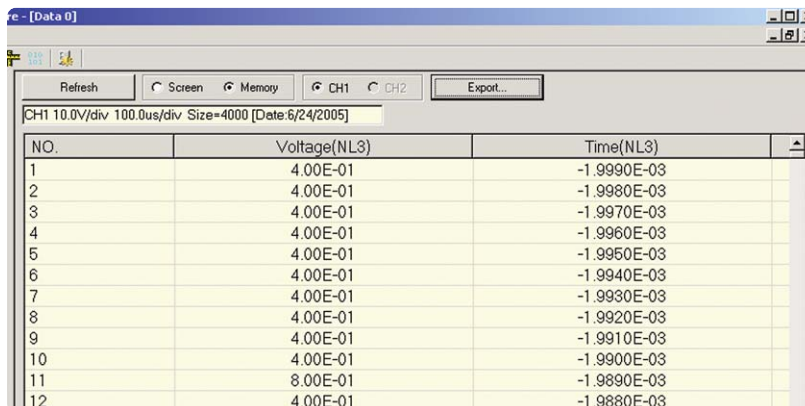


Figure 4. Virtual Panel

See just how easy it is to use Scope Connect software (continued)

The Data view

The Data view pulls acquisition data from the scope and organizes it in tabular format. You can download data from either channel 1 or channel 2 for export into popular programs like Microsoft Excel. Data is saved in .xls format. You can choose whether you want to download just the data shown onscreen or data from the entire memory.

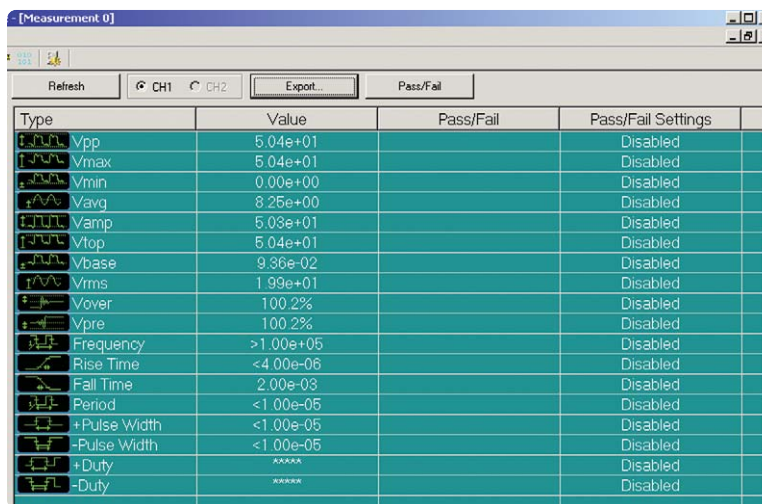


NO.	Voltage(NL3)	Time(NL3)
1	4.00E-01	-1.9990E-03
2	4.00E-01	-1.9980E-03
3	4.00E-01	-1.9970E-03
4	4.00E-01	-1.9960E-03
5	4.00E-01	-1.9950E-03
6	4.00E-01	-1.9940E-03
7	4.00E-01	-1.9930E-03
8	4.00E-01	-1.9920E-03
9	4.00E-01	-1.9910E-03
10	4.00E-01	-1.9900E-03
11	8.00E-01	-1.9890E-03
12	4.00E-01	-1.9880E-03

Figure 5. Data view

The Measure view

The Measure view gives you access to all 18 individual channel measurements. Each click of the Refresh button updates the window with the current measurements on the oscilloscope. You can export measurements in .xls format for further analysis or archiving.



Type	Value	Pass/Fail	Pass/Fail Settings
Vpp	5.04e+01		Disabled
Vmax	5.04e+01		Disabled
Vmin	0.00e+00		Disabled
Vavg	8.25e+00		Disabled
Vamp	5.03e+01		Disabled
Vtop	5.04e+01		Disabled
Vbase	9.36e-02		Disabled
Vrms	1.99e+01		Disabled
Vover	100.2%		Disabled
Vpre	100.2%		Disabled
Frequency	>1.00e+05		Disabled
Rise Time	<4.00e-06		Disabled
Fall Time	2.00e-03		Disabled
Period	<1.00e-05		Disabled
+Pulse Width	<1.00e-05		Disabled
-Pulse Width	<1.00e-05		Disabled
+Duty	*****		Disabled
-Duty	*****		Disabled

Figure 6. Measure view

The Waveform view

The Waveform view also updates quickly and easily with a click of the Refresh button. This window recreates the waveform for easy offline analysis. The window includes cursors on both axes so you can easily make measurements.

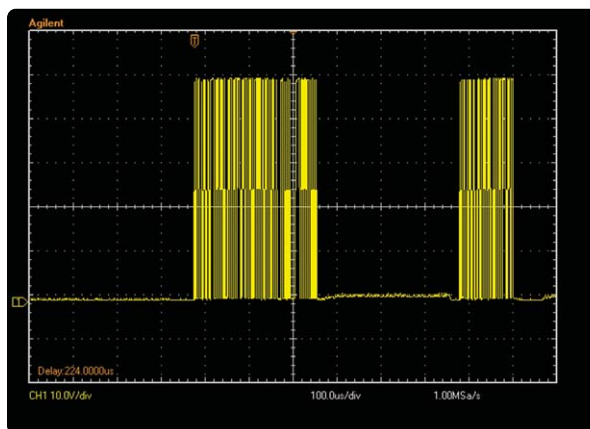


Figure 7. Waveform view

See just how easy it is to use Scope Connect software (continued)

Compatibility

The N2860A Scope Connect Software and N2861A communications module are compatible with the following Agilent oscilloscopes:

3000 Series oscilloscope	Software revision
DSO3062A	03.01.28 or higher
DSO3102A	03.01.28 or higher
DSO3152A	03.01.28 or higher
DSO3202A	03.01.28 or higher

The N2860A Scope Connect software is compatible with PCs running the following operating systems:

Operating System

Windows 2000

Windows XP

Ordering Information

The N2860A Scope Connect software comes with the following:

One CD with the Scope Connect software for installation onto a PC

License certificate

The N2861A communications module comes with the following:

RS-232 and GPIB connectivity

One copy of the N2860A Scope Connect software

Note: The N2861A acts as a hardware license key for the N2860A Scope Connect software.

Related Literature

Publication Title	Publication Type	Publication Number
<i>3000 Series Oscilloscopes</i>	Data Sheet	5989-2235EN

Microsoft® and Windows® are U.S. registered trademarks of Microsoft Corporation.

Agilent Technologies' Test and Measurement Support, Services, and Assistance

Agilent Technologies aims to maximize the value you receive, while minimizing your risk and problems. We strive to ensure that you get the test and measurement capabilities you paid for and obtain the support you need. Our extensive support resources and services can help you choose the right Agilent products for your applications and apply them successfully. Every instrument and system we sell has a global warranty. Two concepts underlie Agilent's overall support policy: "Our Promise" and "Your Advantage."

Our Promise

Our Promise means your Agilent test and measurement equipment will meet its advertised performance and functionality. When you are choosing new equipment, we will help you with product information, including realistic performance specifications and practical recommendations from experienced test engineers. When you receive your new Agilent equipment, we can help verify that it works properly and help with initial product operation.

Your Advantage

Your Advantage means that Agilent offers a wide range of additional expert test and measurement services, which you can purchase according to your unique technical and business needs. Solve problems efficiently and gain a competitive edge by contracting with us for calibration, extra-cost upgrades, out-of-warranty repairs, and on-site education and training, as well as design, system integration, project management, and other professional engineering services. Experienced Agilent engineers and technicians worldwide can help you maximize your productivity, optimize the return on investment of your Agilent instruments and systems, and obtain dependable measurement accuracy for the life of those products.

Agilent Open

www.agilent.com/find/open

Agilent Open simplifies the process of connecting and programming test systems to help engineers design, validate and manufacture electronic products. Agilent offers open connectivity for a broad range of system-ready instruments, open industry software, PC-standard I/O and global support, which are combined to more easily integrate test system development.

Agilent Email Updates

www.agilent.com/find/emailupdates

Get the latest information on the products and applications you select.

Agilent Direct

www.agilent.com/find/agilentdirect

Quickly choose and use your test equipment solutions with confidence.

For more information on Agilent Technologies' products, applications or services, please contact your local Agilent office. The complete list is available at:

www.agilent.com/find/contactus

Phone or Fax

United States:

(tel) 800 829 4444
(fax) 800 829 4433

Canada:

(tel) 877 894 4414
(fax) 800 746 4866

China:

(tel) 800 810 0189
(fax) 800 820 2816

Europe:

(tel) 31 20 547 2111

Japan:

(tel) (81) 426 56 7832
(fax) (81) 426 56 7840

Korea:

(tel) (080) 769 0800
(fax) (080) 769 0900

Latin America:

(tel) (305) 269 7500

Taiwan:

(tel) 0800 047 866
(fax) 0800 286 331

Other Asia Pacific Countries:

(tel) (65) 6375 8100
(fax) (65) 6755 0042

Email: tm_ap@agilent.com

Contacts revised: 05/27/05

Product specifications and descriptions in this document subject to change without notice.

© Agilent Technologies, Inc. 2005

Printed in USA, July 14, 2005

5989-3400EN

