

Introduction

Guide to install and use AVerMedia® AVerVision application.

The bundled AVerVision software offers you different ways to use the document camera for your presentation needs, record video or capture still image with your computer.

AVerMedia

P/N 300AACFR
 Made in Taiwan

Step 1 Minimum system requirements

- Pentium®-class processor
- Windows2000 Professional with Service Pack 4, Windows XP Professional Service Pack 2 or Home, or Windows XP Tablet PC
- 128 MB of RAM (256 MB recommended)
- 60 MB of available hard-disk space

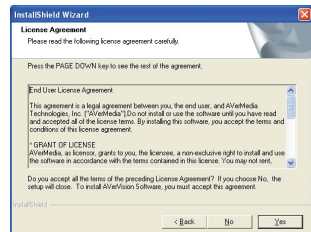
Step 2 Install the AVerVision Application

Before installing the application make sure the document camera is not connected to the computer USB port.

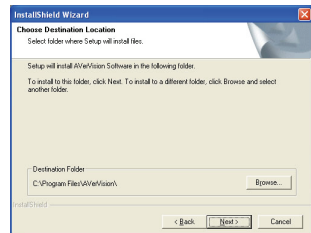
- Place Installation CD into the CD-ROM drive. When the installation main screen appears, click PC Camera Applications and then follow the on screen instructions.



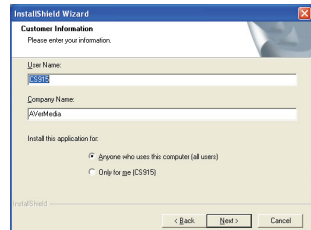
- Read the Software License Agreement and click **YES**.



- Click **Next** to install on the specified location. If you want to install to a different folder, click **Browse**.

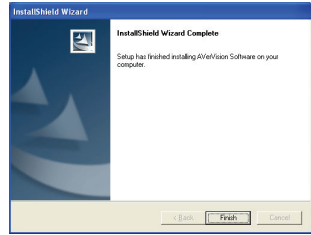


- Enter customer information and select "Anyone who uses this computer" or "only for me" then click **Next**.



Note: For multiple user accounts, AVerVision software would not be available to other accounts when "only for me" is selected.

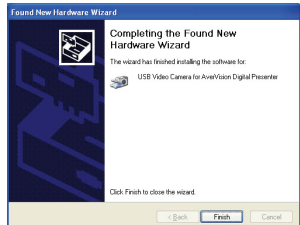
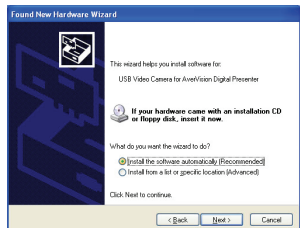
- When the installation is completed, click **Finish**.



Step 3 Install the Driver

To use the AVerVision document camera as USB camera:

- Connect the document camera to computer thru USB connection. The system will automatically detect the hardware.
- In the Found New Hardware Wizard, select “No, not this time” then click **Next**.
- Select “Install the software automatically (Recommended)” then click **Next**.
- When the Microsoft Digital Signature warning message appears, click **YES** (Windows2000) or **Continue Anyway** (WindowsXP) to continue the installation.
- Click **Finish**.



You may now use the AVerVision document camera with the AVerVision application or use it as a USB camera.

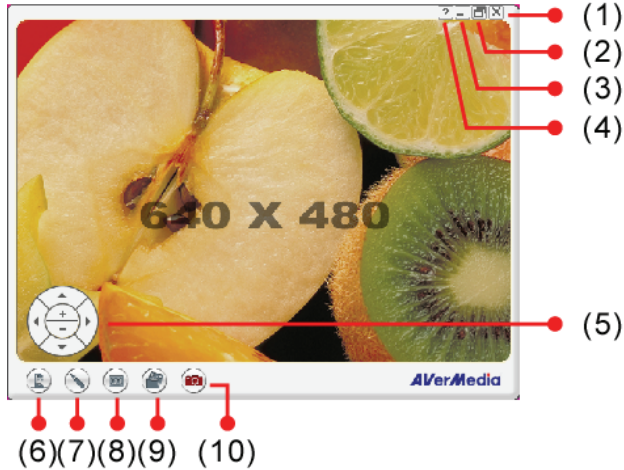
Step 4 Using the AVerVision Application

To run the application, click start > Programs > AVerVision > VisionAP or double click VisionAP icon on your computer desktop.



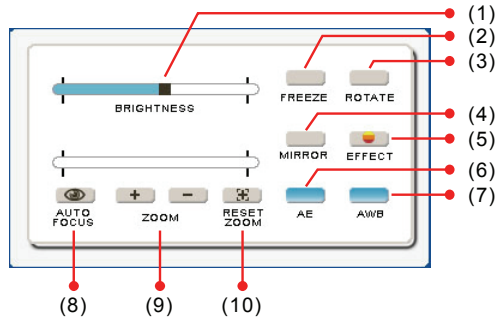
Before running the AVerVision software, make sure the AVerVision document camera is connected to the computer USB port and turned **ON**.

Video Screen



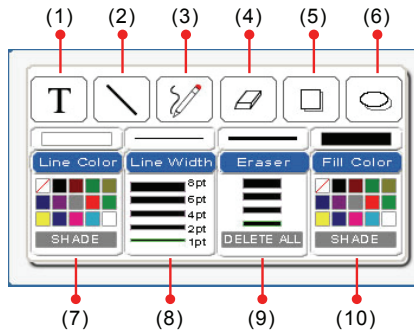
Function	Description
1	Close the AVerVision program.
2	Toggle to display in full screen/window mode. In full screen mode, move the cursor to the upper right of the screen to display some window mode buttons.
3	Minimize the video screen to a button on the task bar.
4	Display the information of the software.
5	Zoom in/out the image and pan the zoomed image up, down, left and right. To show the Zoom and Pan buttons, move the cursor to the lower left of the screen.
6	Show/hide the document camera control panel. Use this to operate document camera and adjust presentation screen.
7	Show/hide the annotation control panel. Use this to overlay text, draw line/shape, and highlight details on your presentation screen.
8	Show/hide the video playback and record control panel.
9	Open the image file.
10	Capture screen image.

Document Camera Control Panel



<i>Function</i>	<i>Description</i>
1	Brightness adjustment.
2	Pause or resume video stream.
3	Rotate the image by 90°.
4	Flip the image.
5	Convert the image to original color, monochrome (black & white) or negative
6	Enable/disable auto exposure.
7	Enable/disable auto white balance.
8	Adjust the focus automatically (Selective models only).
9	Zoom in/out the image.
10	Return to normal view (1x).

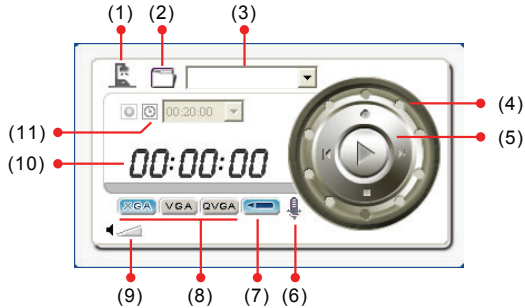
Annotation Control Panel



<i>Function</i>	<i>Description</i>
1	Select to type text.
2	Select to draw a straight line.
3	Select to draw line.
4	Select to eraser mode.
5	Select to make rectangular shape.
6	Select to make circular shape.

Function	Description
7	Change the outline color of the line, text and shape. To enable translucent effects, press SHADE.
8	Change the thickness of the line.
9	Erase all the annotation effects.
10	Change the internal color of text and shape. To enable translucent effects, press SHADE.

Video Playback and Record Control Panel



Function	Description
1	Switch to live camera display mode.
2	Retrieve recorded video clips.
3	Show the history of previously opened video clips.
4	Increase/decrease the rewind and fast forward speed.
5	Play, control video display and record.
6	Enable/disable audio recording.
7	Enable/disable annotation recording.
8	Select the video recording resolution size to XGA (1024 x 768), VGA (640 x 480) and QVGA (320 x 240).
9	Adjust the playback volume.
10	Display the remaining video playback or video recorded timer.
11	Preset video recording time limit.

Captured Image Preview Screen



(1) (2)(3)

<i>Function</i>	<i>Description</i>
1	Display the history of the opened and saved still image.
2	Save the displayed captured still image.
3	Call the annotation control panel.

DISCLAIMER

No warranty or representation, either expressed or implied, is made with respect to the contents of this documentation, its quality, performance, merchantability, or fitness for a particular purpose. Information presented in this documentation has been carefully checked for reliability; however, no responsibility is assumed for inaccuracies. The information contained in this documentation is subject to change without notice.

In no event will AVerMedia be liable for direct, indirect, special, incidental, or consequential damages arising out of the use or inability to use this product or documentation, even if advised of the possibility of such damages.

TRADEMARKS

AVerMedia is registered trademarks of AVerMedia TECHNOLOGIES, Inc. IBM PC is a registered trademark of International Business Machines Corporation. Macintosh is a registered trademark of Apple Computer, Inc. Microsoft is a registered trademark and Windows is a trademark of Microsoft Corporation. All other products or corporate names mentioned in this documentation are for identification and explanation purposes only, and may be trademarks or registered trademarks of their respective owners.

COPYRIGHT

© 2007 by AVerMedia TECHNOLOGIES, Inc. All rights reserved. No part of this publication may be reproduced, transmitted, transcribed, stored in a retrieval system, or translated into any language in any form by any means without the written permission of AVerMedia TECHNOLOGIES, Inc.



THE MARK OF CROSSED-OUT WHEELED BIN INDICATES THAT THIS PRODUCT MUST NOT BE DISPOSED OF WITH YOUR OTHER HOUSEHOLD WASTE. INSTEAD, YOU NEED TO DISPOSE OF THE WASTE EQUIPMENT BY HANDING IT OVER TO A DESIGNATED COLLECTION POINT FOR THE RECYCLING OF WASTE ELECTRICAL AND ELECTRONIC EQUIPMENT. FOR MORE INFORMATION ABOUT WHERE TO DROP OFF YOUR WASTE EQUIPMENT FOR RECYCLING, PLEASE CONTACT YOUR HOUSEHOLD WASTE DISPOSAL SERVICE OR THE SHOP WHERE YOU PURCHASED THE PRODUCT.