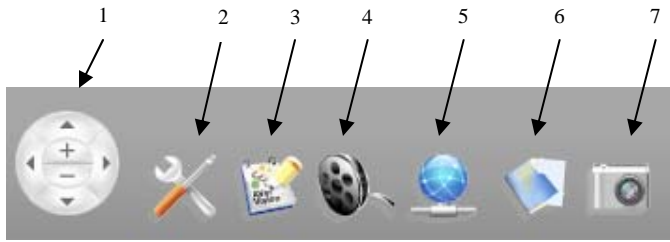
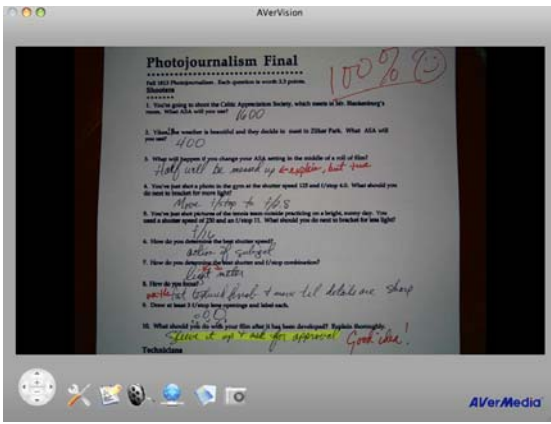


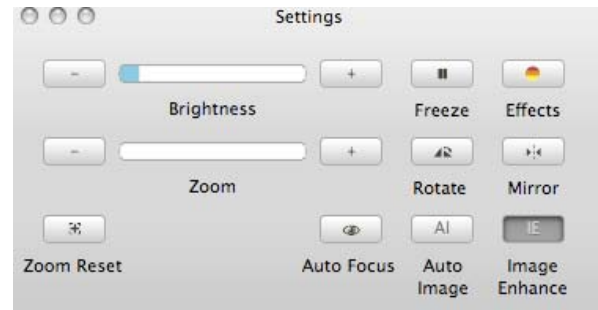
AVerVision 2 Software Quick Reference Guide (Mac)



1. Zoom and Pan
2. Doc Cam Settings (Command + 1)
3. Annotation (Command + 2)
4. Video Recording Settings (Command + 3)
5. Network Settings (Command + 4)
6. Open Image or Video File
7. Image Capture Settings

Document Camera Settings

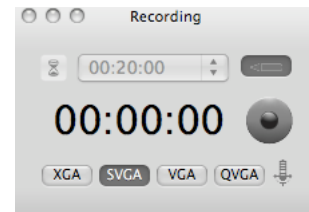
-To adjust, press “Doc Cam Settings” button on software control panel
 -Settings box will appear.



* Auto Image and Image Enhance features are unavailable when using document camera model 300AF+ or SPC300.

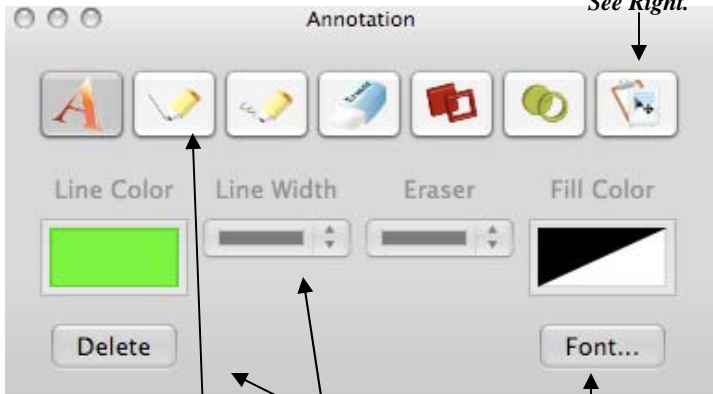
Video Recording Settings

-Use this palette to change the quality and compression of videos you create from XGA down to QVGA, depending on your quality vs. space needs.



Annotation

The built-in annotation tools allow you to mark up the image on the screen. The tools feature a variety of options. *Select And Paste See Right.*



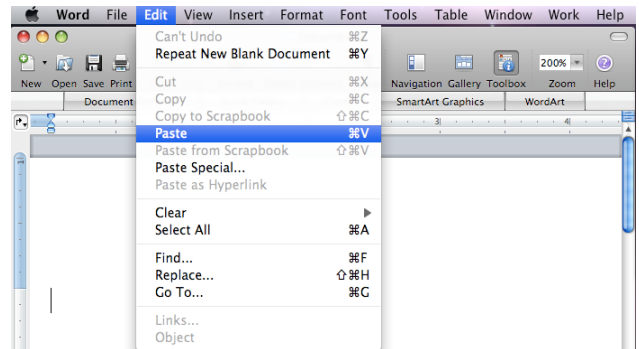
Tools at the top allow you to select a text tool to type directly on the image in the font of your choosing; use a straight line or freehand pencil tool; an eraser; draw rectangles or circles to focus attention on objects.

The second row of tools allows you to control the color and width of your lines, as well as the color of the fill. The “Delete” button at bottom clears everything.

The “Font” button above allows you to choose the font for use when typing with the text tool in the top row. You can also access this by pressing Command + T.

Select & Paste

- This feature allows the user to quickly reproduce a section of the video image and paste it into a word processor or other program.
- Select desired area with mouse pointer and paste in a word processor such as Microsoft Word™ or Pages™. This is done by selecting Paste under Edit from the Menu bar or simply pressing Command + V.



Software Shortcuts

Settings: Command +1 **Annotations:** Command + 2 **Recording:** Command +3
Networking: Command +5 **Show Fonts:** Control + T



205 Westwood Ave, Long Branch, NJ 07740
Phone: 866-94 BOARDS (26273) / (732)-222-1511
Fax: (732)-222-7088 | E-mail: sales@touchboards.com