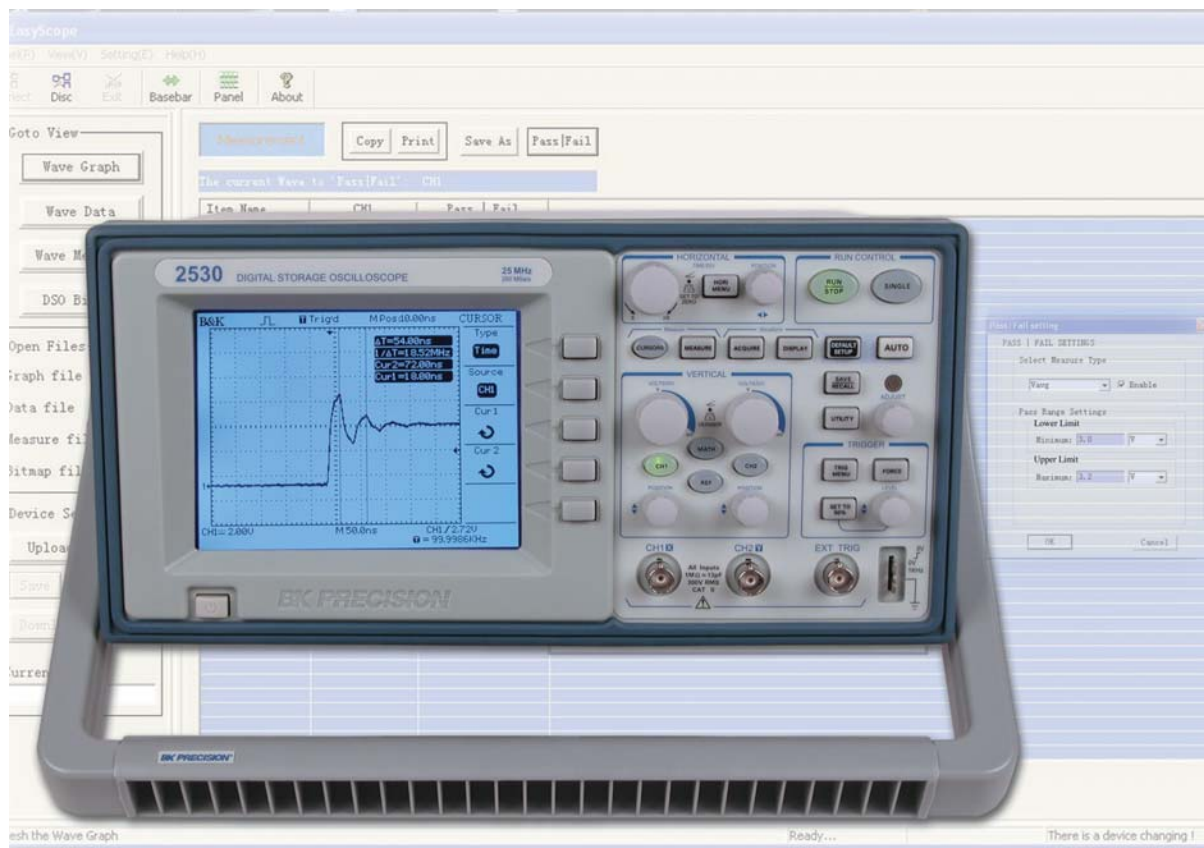


Data Sheet

Model 2530

Digital Storage Oscilloscope 25MHz, 250MSa/s



ESSENTIAL FEATURES FOR THE COST CONSCIOUS USER

The 2530 Digital Storage Oscilloscope delivers essential features and reliable performance at a price you can afford. Analog style knobs and controls combined with Autoset functions make this oscilloscope easy to use. Advanced triggering, automatic measurements and FFT functions provide you with many options to debug your circuits. Additionally, the instrument comes with PC Software that lets you easily capture, save and analyze waveforms and measurement results. The 2530 is an ideal education and training tool and also well suited for applications in service and repair.

- One touch automatic setup for ease of use (Auto)
- 25 MHz bandwidth, 250MSa/s sample rate
- 4000 point record length for each channel
- Capture, save and analyze waveform data with the included EasyScope Application Software

- Cursors with readouts
- Eleven automatic measurements
- FFT standard plus 4 additional math functions
- Extensive Trigger capabilities including Pulse Width and line-selectable Video trigger
- Save/Recall setup and waveform data

- Security loop
Use the built-in cable channel to secure your oscilloscope to your location

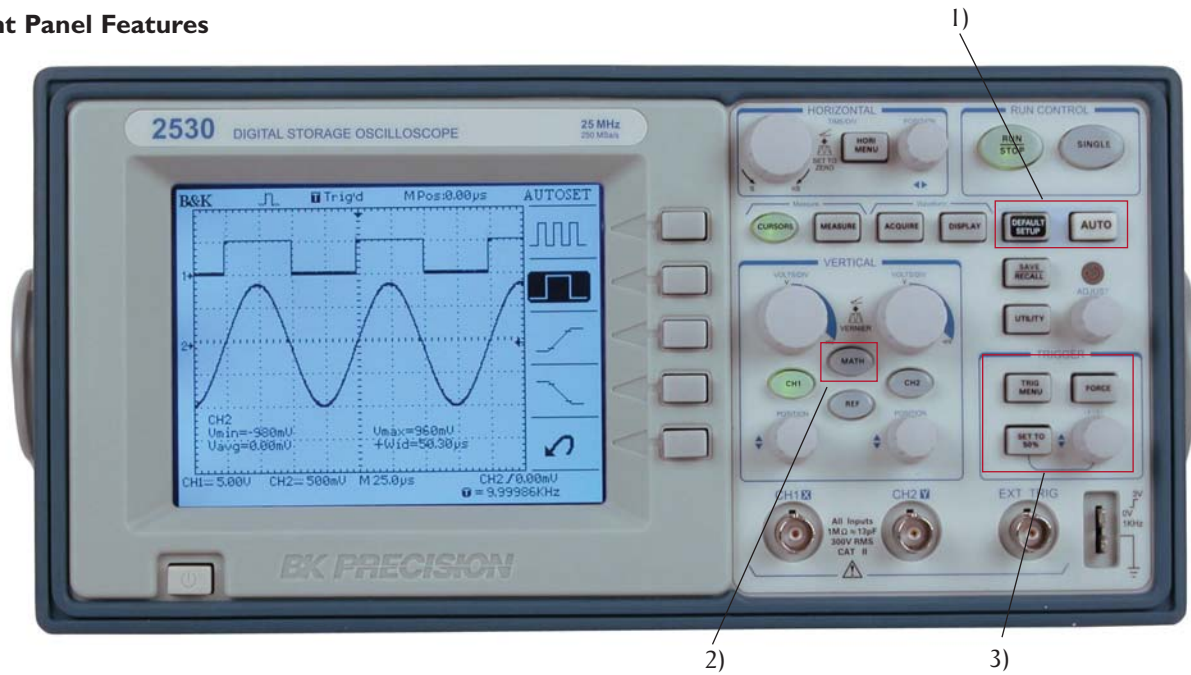


B&K Precision Corporation

22820 Savi Ranch Parkway, Yorba Linda, CA 92887
Tel: 714-921-9095, Fax: 714-921-6422
www.bkprecision.com

Specifications subject to change without notice

Front Panel Features



1) Easy setup and use

The Auto button identifies the input signal and automatically sets up the vertical, horizontal and trigger controls to produce a useable display. You can customize the display by selecting option single cycle, multiple cycle, rising or falling edge. Press the Default button to instantly restore the default setting. Users familiar with analog oscilloscopes will appreciate the analog style controls and features.

2) Waveform analysis with math and FFT

Analyze your signal with add, subtract multiply and divide functions. View the signal's frequency domain spectrum and perform harmonic distortion analysis.

3) Advanced triggering

Isolate the signal with advanced triggering including pulse width and selectable video trigger.

Auto calibration

Automatically calibrate the instrument's vertical and horizontal system.

Stored setups and waveforms

Store up to 10 waveforms and 2 setups for future reference and use.

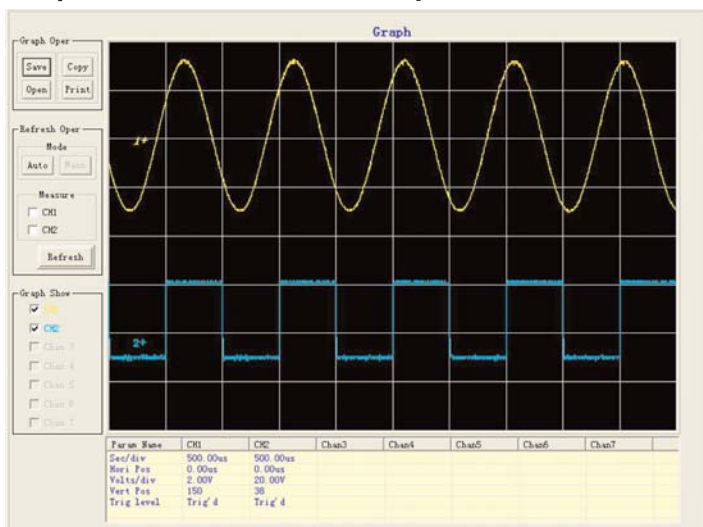
11 automatic measurements

Increase your efficiency. Execute and display 11 measurements simultaneously.

XY Mode

Unlike comparable models in the market, the 2530 supports settable sample rates of 5kSa/s – 200kSa/s when operating in XY mode.

Simple Documentation and Analysis



The included Easyscope software provides seamless integration between oscilloscope and PC. Capture and transfer waveforms, screen images, setups and measurement results to a Windows PC via the USB device port on the back of the instrument.

- **Save waveform data in csv (Microsoft Excel) format for post acquisition analysis**
- **Document your results: Print, save or copy/paste waveform data and measurement results. Save and print bitmap images and setups**
- **Capture waveforms and measurement results manually or automatically at user defined intervals. In automatic mode, the smallest refresh rate is 0.5 seconds, allowing for virtually real time waveform capture**
- **Generate real-time Pass/Fail verdicts for captured measurement results**

Specifications model

| 2530 | |
|--|---|
| Performance Characteristics | |
| Bandwidth | 25 MHz |
| Real time sample rate on each channel | 250 MSa/s |
| Channels | 2 |
| Display | 1/4 VGA Monochrome LCD |
| Rise Time | < 14ns |
| Record Length* | 4000 points |
| Vertical Resolution | 8 bits |
| Vertical Sensitivity | 2mV - 5V/div |
| DC gain accuracy | ±3.0% |
| Maximum Input Voltage | 300 Vrms, CAT II (between signal and reference BNC connector) |
| Position Range | 2mV – 100mV range ±2V 200mV - 5V range: ±40V |
| Time Base range | 2.5 ns/div – 50 s/div |
| Timebase accuracy | 100 ppm |
| Input Coupling | AC, DC,GND |
| Input Impedance | 1MΩ in parallel with 13pf |
| Vertical and Horizontal Zoom | Vertically or horizontally expand or compress a live or stopped waveform |
| I/O interface | USB device port for connection to PC. (Requires included EasyScope Software for use) |
| * The instrument displays 2500 points. 4000 points can be retrieved from internal memory with the included EasyScope application. This feature is supported for a time base settings range of 2.5μs/Div-50ms/Div (scan mode is not active) | |
| Acquisition Modes | |
| Sample | Display sample data only |
| Peak Detect | |
| Average | Waveform averaged, selectable from 4,16,32,64,128,256 |
| Scan Mode | For time base settings 0.1s/div-50s/div |
| Trigger System | |
| Trigger Types | Edge, Pulse Width, Video* |
| Trigger Modes | Auto, Normal, Single |
| Trigger Coupling | AC, DC, LF reject, HF reject |
| Trigger Source | CH1, CH2, AC line, Ext, Ext/5 |
| *Support formats PAL/SECAM, NTSC. Triggers on odd or even field, all lines or line number | |
| Cursors | |
| Types | Amplitude, Time |
| Measurements | ΔV, ΔT, 1/ΔT |

Specifications (Continued)

| | |
|--|---|
| Automatic Waveform Measurement | |
| Time | Rise time, Fall Time, Cycle Frequency, Period, Positive Pulse Width, Negative Pulse width |
| Voltage | MAX, MIN, Peak-Peak, Average, Vrms |
| Frequency | Hardware counter provides frequency readout of trigger source with 6 digit resolution |
| Waveform Math | |
| Math function | FFT, add, subtract, multiply, divide |
| FFT | Windows: Hanning, Hamming, Blackman, Rectangular 1024 sample points |
| Autoset | |
| Single button automatic setup of both channels for vertical, horizontal and trigger systems | |
| Display | |
| Display Mode | 1/4 VGA (5.7") monochrome LCD (320x240) with adjustable contrast and inverse video |
| Display Types | Point, Vector |
| Persistence | Off, 1s, 2s, 5s, infinite |
| Waveform Interpolation | Sin(x)/x, Linear |
| Format | YT and XY |
| Power Requirements | |
| 100-240 VAC, 50VAmax, 45Hz to 440Hz | |
| Environmental | |
| Temperature | Operating: 0°C to +55°C Nonoperating: -40°C to +70°C |
| Humidity | Operating: 95%RH, 40°C Nonoperating: 90%RH, 65°C |
| Altitude | Operating to 4000m |
| Pollution Degree | Pollution degree 2 for indoor use only. |
| Electromagnetic compatibility and Safety | |
| EMC | This oscilloscope is in compliance with council EMC directive 2004/108/EC |
| Safety | EN61010-1:2001 |
| General | |
| Dimensions | 290mm (Width) x 150mm (Height) x 300mm (Depth) 11.4in x 5.9in x 5.9in |
| Weight | 4.6 kg (10 lbs) |
| Accessories One Year Warranty | |
| SUPPLIED: User Manual, 10:1 Probe set (2 pieces), Power cord , USB interface cable, EasyScope Software Installation disk | |
| OPTIONAL: PR 37A 10:1 Probe, PR 32A Demodulator Probe, PR 55 High Voltage Probe | |