

**DRANETZ**  
**BMI**



205 Westwood Ave  
Long Branch, NJ 07740  
1-877-742-TEST (8378)  
Fax: (732) 222-7088  
salesteam@Tequipment.NET



# Energy Platform EP1

## Advanced Energy & Demand Analyzer

Analyze electrical power, demand, and energy.

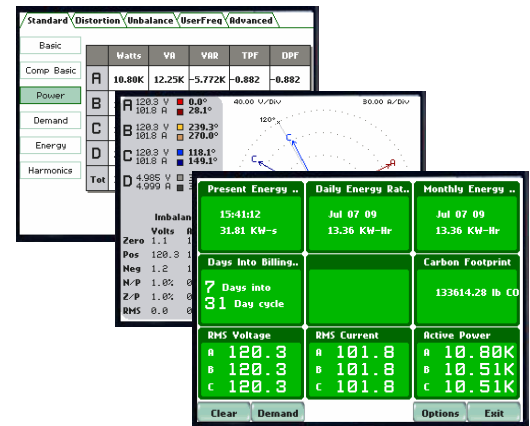
- Easy to Use Automatic Setups
- Programmable Hi/Low Limits
- 4 Channel Voltage AC/DC; 600V
- 4 Channel Current AC/DC; Probe Dependent
- 256 samples per cycle per channel, +/- 0.1% Accuracy
- Frequency range 45-65 Hz
- Color LCD Touch Screen
- DranView Energy Report Writer
- IEEE 519, IEEE 1159, IEC 61000-4-7
- CE, ISO9001, IEC 61010



Model shown  
DBEFPFLEX3K-4

## Features

- Measured Parameters
  - General: Volts, Amps, Frequency, K Factor, Transformer Derating, Telephone Line Interference
  - Energy: kW, kWh, Var, Varh, PF, VA, Forward/Reverse Energy
  - Harmonics: THD, TID, Individual to 63rd (V/I/W)
  - Green Energy: Carbon Footprint Calculator, Predicted Demand
- Realtime Displays
  - Meter Mode; All measured parameters
  - Scope Mode; Waveform displays of all 8 channels
  - Phasor Diagram; circuit verification
  - Harmonic Spectrum
- Records Power Quality threshold crossings for high and low limits
- Timeplots for all monitored parameters over the survey period
- Reports realtime & historic demand and energy information
- Daily, weekly, monthly, billing cycle, and custom demand intervals
- User selected intervals from 1 min — 1 hour
- Up to 32GB of compact flash memory (4GB included), 9+ months of recording
- Circuit Connection Types: Single Phase, Split Phase, Three-Phase Wye & Delta, 2½ element
- 2 hour UPS battery
- USB, Ethernet, RS-232 Communications (optional)
- Languages installed: English, Spanish, French, Italian, German, Swedish



### Packages:

DBEP10-4	with 1-10A CT's	\$2,850.00
DBEP500-4	with 10-500A CT's	\$2,850.00
DBEP550-4	with 1-100A CT's	\$2,850.00
DBEFPFLEX3K-4	with 30/300/3000A 24" Flex CT's	\$3,995.00
DBEFPFLEX6K-4	with 60/600/6000A 24" Flex CT's	\$4,510.00

All packages include Energy Platform EPI, Memory Card, EPRW Software, Voltage Leads, Carry Case, Power Supply, Quick Reference, and four selected CT's



**DRANETZ**  
**BMI**



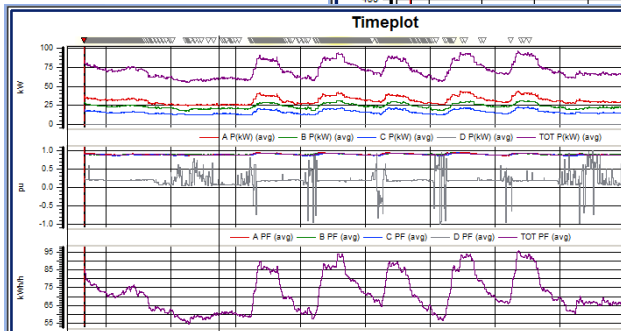
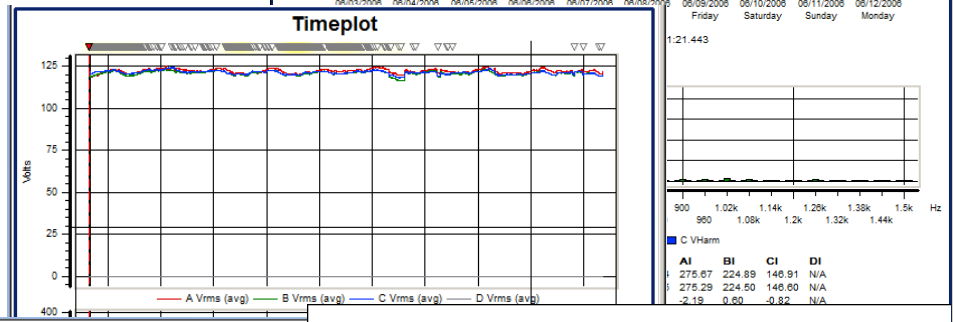
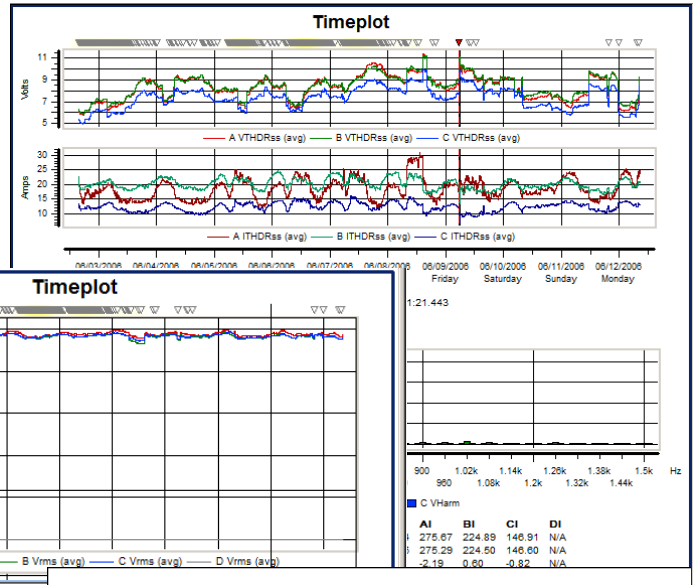
205 Westwood Ave  
Long Branch, NJ 07740  
1-877-742-TEST (8378)  
Fax: (732) 222-7088  
salesteam@Tequipment.NET



# Energy Platform EP1

## DranView & Energy Report Writer

- Advanced energy reporting
- Rescue Kit for Circuit correction
- Statistical Tables
- Timeplots of all measured parameters
- Harmonic Timeplots and DFT's Charts
- Automatic and Customizable Report Writer
- Billing allocation report



	kWh	\$
Energy usage during period	16534.525	1008
Energy usage during off peak	8787.797	404
Energy usage during on peak	7746.728	604

	Min	Max	Avg
AP(kW)	24.55	43.98	31.57
BP(kW)	17.57	31.17	23.57
CP(kW)	12.13	23.08	15.88
DP(kW)	-0.0000366	0.0000822	0.0000185
TOTP(kW)	55.01	96.86	71.02
APF	0.8670	0.9600	0.9048
BPF	0.8783	0.9453	0.9051
CPF	0.8614	0.9462	0.8974
DPF	-0.9970	0.9996	0.2037
TOTPF	0.8749	0.9427	0.9024
TOTDemand(kWh/h)	54.71	95.74	70.98
APintg Energy(kWh)	6.667	7350	3645
BPintg Energy(kWh)	4.977	5487	2753
CPintg Energy(kWh)	3.469	3696	1836
DPintg Energy(kWh)	-0.0	0.004314	0.001957
TOTPintg Energy(kWh)	15.00	16534	8234

DRANETZ BMI		Dranet-BMI 1000 New Durham Road Edison, NJ 08818		Date: 07/09/2009 Page 13	
Energy Management Study				Page:	
<b>MIN/MAX/AVG POWER REPORT</b>					
Site: Measured from 06/02/2006 15:45:00.0 to 06/12/2006 08:45:00.0					
<b>POWER ACTIVE POWER, P (W)</b>					
	A	B	C	D	TOTAL
Min kW	4.40	15.205	11.482	-0.010	47.49 on 06/07/2006 05:30:00
Max kW	63.68	40.200	31.658	0.006	134.46 on 06/09/2006 13:45:00
Median kW	30.66	23.006	15.153	0.000	68.59
Average kW	31.57	23.571	15.877	0.000	71.02
<b>APPARENT POWER, S (VA)</b>					
	A	B	C	D	TOTAL
Min kVA	5.15	18.33	13.031	0.000	57.66 on 06/11/2006 05:15:00
Max kVA	70.31	45.10	37.433	0.069	152.86 on 06/09/2006 13:45:00
Median kVA	34.19	25.70	17.041	0.000	76.74
Average kVA	34.83	26.03	17.659	0.000	78.52
<b>REACTIVE POWER Q, AT FUND. FREQ. (VAR)</b>					
	A	B	C	D	TOTAL
Min kVAR	-0.203	0.013	4.882	-0.000	21.87 on 06/08/2006 08:15:00
Max kVAR	36.685	26.013	19.243	0.001	77.55 on 06/06/2006 20:15:00
Median kVAR	14.127	10.407	7.419	0.000	31.76
Average kVAR	14.042	10.273	7.372	0.000	31.69
<b>POWER FACTOR, PF</b>					
	A	B	C	D	TOTAL
Min	-0.854	0.590	0.756	-0.271	0.774 on 06/11/2006 19:45:00
Max	0.974	0.960	0.975	0.663	0.953 on 06/05/2006 08:45:00
Median	0.897	0.901	0.893	0.195	0.896
Average	0.905	0.905	0.897	0.204	0.902
<b>DEMAND REAL POWER DEMAND</b>					
	A	B	C	D	TOTAL
Min kW/h					54.71 on 06/04/2006 06:40:00
Max kW/h					95.74 on 06/09/2006 08:50:00
Median kW/h					68.54
Average kW/h					70.98
<b>ENERGY ENERGY - INTEGRATED ACTIVE POWER (VHRS)</b>					
	A	B	C	D	TOTAL
kWh	7343	5482	3693	0.004	16519 on 06/12/2006 08:40:00