

ELMO TRAINING SESSION # 3

HOOKING THE TT-02u AND THE TT-02s TO THE SMARTBOARD (Version 10 software) WITH *IMAGEMATE SOFTWARE*

This paper will discuss the set up and steps to let the ELMO TT-02u and the ELMO TT-02s (ELMO TT product) work with Version 10 of the Smart Interactive Whiteboard. You will *not* use the SMART ICON that is on the top of the Version 10 software that looks like the TT-02u or the TT-02s. This icon can be deleted from the board to avoid confusion.

If you tap on the icon that looks like your ELMO TT product with the ELMO unit attached the software will say that Version 10 does not support the Elmo product being used. This is due to the fact that SMART is now selling an OEM version of the ELMO product.

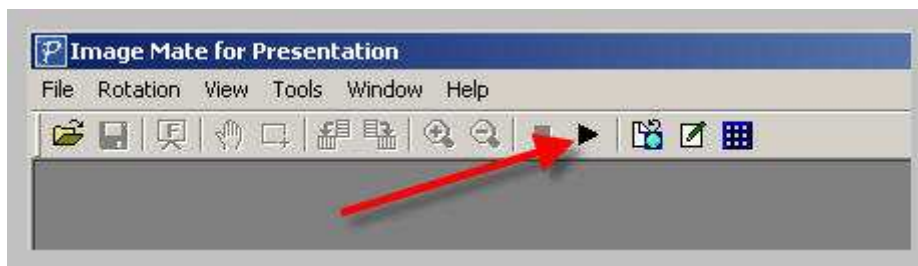
This paper will give you a step by step procedure which will allow you to use your ELMO document camera with the **ELMO IMAGEMATE Software** along with the Smartboard. .

The following is understood;

- Smart Version 10 software is loaded on to the computer running the Smartboard
- ELMO Imagemate software is loaded to the computer running the Smartboard
 - Imagemate comes in the ELMO TT-02u and TT-02s box (WIN)
 - Imagemate software can be loaded free via the Internet (WIN or MAC)
- The computer running the Smartboard is hooked to the ELMO TT product via the USB port.
- When Imagemate software is launched the “carrot” shown below is **BLACK** in color. If it is gray you have not fully loaded the software drivers. Follow the directions in the manual that comes with the software.

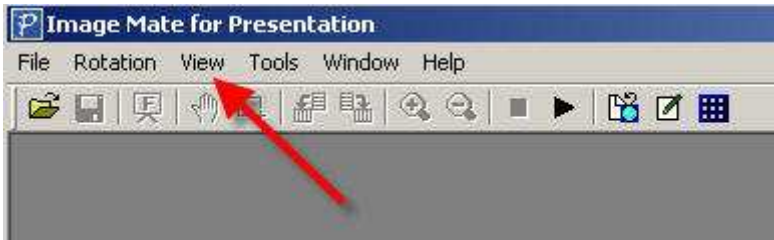
IMAGEMATE SOFTWARE

You can use all of the features of the Imagemate software when it is projected to the Smartboard.

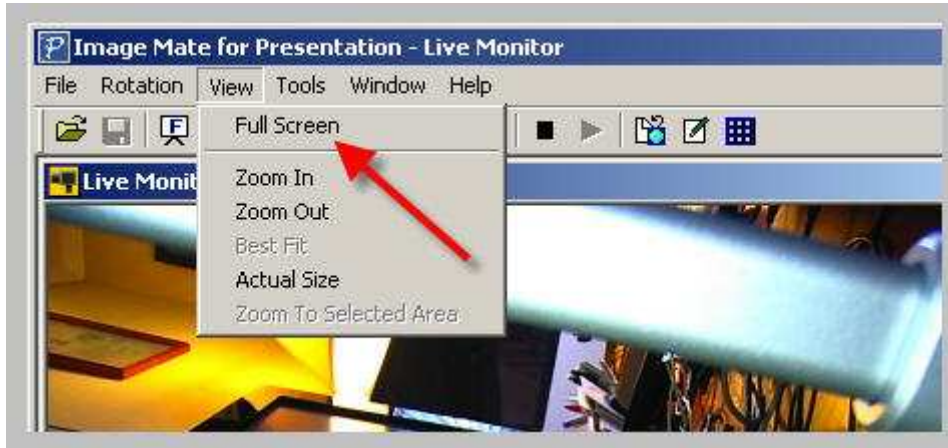


Open the Imagemate software on to the Smartboard. Make sure that the ELMO TT product is turned on and the power button has turned GREEN. If the software is loaded correctly and if the ELMO TT product is attached to the computer running the Smart board you should see the BLACK carrot (viewed above). If the carrot is gray assume that the drivers are either not loaded correctly or the product is not attached correctly.

Once you tap on the Black carrot you will see a live image on the Smartboard.



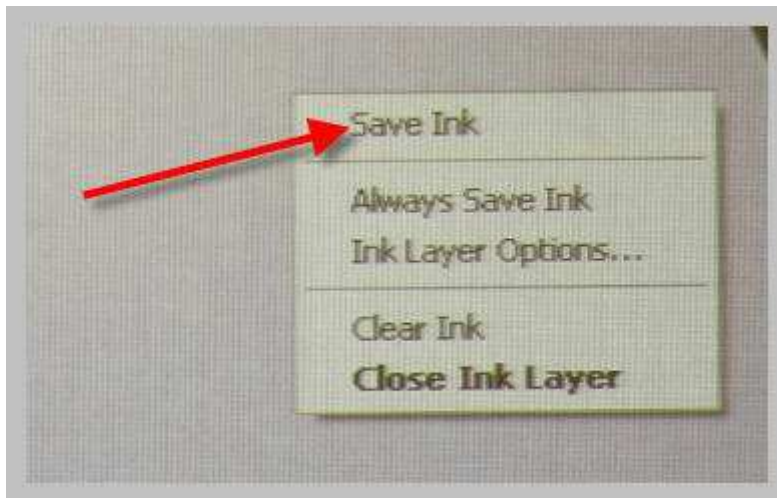
You can tap on VIEW if you want to make the image on the Smartboard larger.



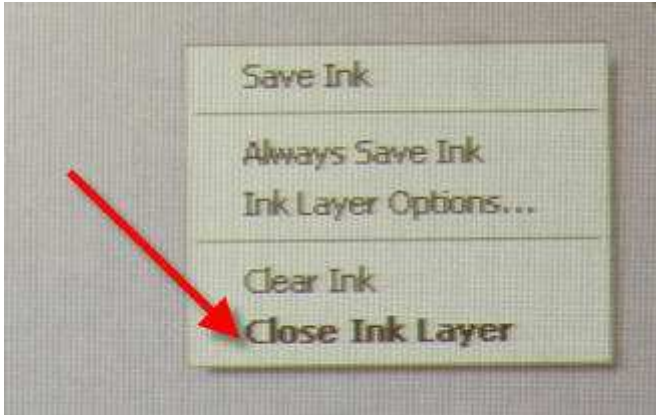
Tap on Full screen to see a larger image on the Smartboard. Hit escape to change the full screen back to the smaller screen.

IMPORTANT

Once you have the image that you want to save you must PICK up a colored Smart pen and either draw on the image or place the pen back into the Smart tray. You must pick up at least one pen as this freezes the image .



Once you have the image that you want frozen TAP on the Smartboard and click on Save Ink. You will know that you are successful saving the image once you hear a sound that sounds like the CLICK of a camera. This sound lets you know that the image has been stored to the Smart Version 10 software.



When you are done storing the image tap the screen once again and tap on Close Ink Layer.

You could open the Smart Version software and see that the images are stored on the Version 10 software.

If you have any questions after reading this paper please feel free to email me at the address below.