

**EPSON**  
EXCEED YOUR VISION



## Epson DC-11 DOCUMENT CAMERA

**Touchboards**  
205 Westwood Ave, Long Branch, NJ 07740  
Phone: 866-94 BOARDS (26273) / (732)-222-1511  
Fax: (732)-222-7088 | E-mail: sales@touchboards.com



### A visual learner's dream.

The perfect tool for a dynamic learning environment, the Epson DC-11 makes it easy to display textbooks, experiments and 3D objects to promote engaging interactive lessons. Display up to two full pages with amazing clarity and detail. The DC-11 features a 5-megapixel sensor, 10x digital zoom, and 30 frames-per-second video (at full resolution) for stunning image quality and performance. Capture classroom lessons like never before with the DC-11's A/V capture capability and built-in microphone. Use the included software to easily upload and post what you've captured to your favorite classroom website for students that have missed the lesson or are taking the class remotely.<sup>1</sup> When it's time to share live video, as well as captured images, use the convenient split-screen feature. Innovative teaching tools, advanced connectivity, and a compact, durable design make the DC-11 an ideal fit in any educational setting.

- Amazing image quality** — 5-megapixel sensor and SXGA/WXGA/XGA resolution
- Ultra smooth video performance** — 30 frames-per-second video at full resolution
- Easily record audio and video** — built-in microphone and advanced software functions



# Epson DC-11 DOCUMENT CAMERA

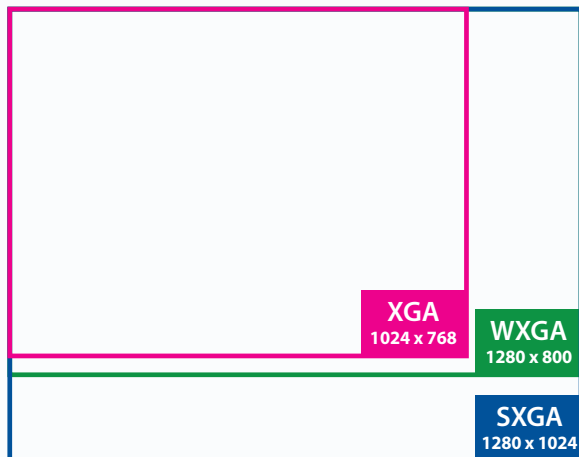
## The perfect partner to Epson projectors — the best-selling projectors in the world.

Epson understands education and has a solution no matter what your teaching scenario. Built with image quality and reliability in mind, Epson projectors enhance communication and inspire collaboration, while offering a low total cost of ownership. From long-throw projectors designed for traditional educational settings to ultra-short-throw, interactive, and all-in-one solutions built for progressive classrooms, Epson has the model made for you.



### Auto-select output resolution (SXGA, WXGA, XGA) for easy setup and operation

The DC-11 automatically detects the native aspect ratio of Epson projectors and selects the output resolution to match. It is capable of displaying SXGA, WXGA and XGA resolutions. And, it can be used with the latest generation widescreen computers.



### Amazing image quality and performance

- 5-megapixel sensor for high quality images
- 30 frames-per-second video at full resolution for ultra smooth video performance
- 10x digital zoom, including 2x lossless for ultra sharp detail



Intuitive buttons and icons



Rotating camera head



Remote included

### Better Products for a Better Future™

For more information on Epson's environmental programs, go to [eco.epson.com](http://eco.epson.com)



#### Eco Features

- RoHS compliant
- Designed to be recycled<sup>2</sup>
- Epson America, Inc. is a SmartWay<sup>SM</sup> Transport Partner<sup>3</sup>





# You asked, we delivered

## Fast, simple setup with advanced connectivity and flexible teaching tools

- Versatile connectivity including:
  - USB for easy connection to a PC/Mac®
  - VGA and Composite for easy connection to a projector
  - Built-in SD card slot
- 12" x 17" capture area makes it easy to display two full pages
- Simultaneously display live and captured images using the split-screen function
- Microscope adapter included — allows the entire class to see a magnified image at the same time
- Store images with 1GB internal memory or export images to an SD card

## Additional Features/Benefits

- **Great positioning flexibility** — camera head rotates 90 degrees vertically and horizontally to capture many angles
  - Can be used as a webcam to capture the classroom
  - Portrait and Landscape rotation capability
- **Intuitive buttons and icons** — for easy navigation and control
- **Remote control included for your convenience**
  - Enables teachers to walk freely around the room
  - Controls both the Epson DC-11 and your Epson projector

## Easy audio/video capture using included software — PC and Mac compatible

- Built-in microphone to record audio with video
- Make annotations over live and captured images
- Time-lapse capture to demonstrate activities such as the growth of plants, organic processes and more
- With your PC, easily upload what you've captured to popular education websites like SchoolTube® and YouTube®<sup>1</sup>
- Tag captured images/videos for easy file management and organization



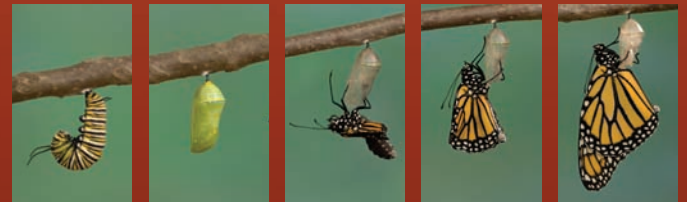
Built-in SD card slot



VGA and Composite connection to a projector



▲ Microscope adapter included (Microscope not included)



Time-lapse capture function

## Sleek, durable design with security features

- Convenient, compact design saves space on your desktop and makes setup quick and easy
- Durable design with robust metal arm
- Kensington® lock support, built-in security bar and mounting holes for added peace of mind



Security bar



# Epson DC-11

## Document Camera

Product Name	Product Code	UPC
DC-11 Document Camera (ELPDC11)	V12H377020	0 10343 88029 0



### Video

**Pick-up Device**  
1/4" CMOS sensor

**Effective Pixels**  
2592 x 1944, 5.0 megapixels

**Frame Rate**  
Analog/USB: 30 fps maximum

**Output**  
Analog: SXGA, XGA, WXGA  
USB: QVGA, VGA, SVGA, XGA, SXGA, UXGA

**White Balance**  
Auto

**Exposure**  
Auto

**Brightness**  
Auto

### Optical System

**Lens**  
F – number: 2.8

**Capture Area**  
11.7" x 16.5"

**Zoom**  
10x digital (includes lossless zoom)

**Lossless zoom**  
2x (XGA/WXGA output)  
1.9x (SXGA output)

**Focus**  
Auto

**Image Rotation**  
±90 degrees (horizontal/vertical)

### Illumination System

**Upper**  
White LED x 2

**Brightness**  
250 lx (Shooting area: A3)

### Functions

Zoom, Freeze, Auto focus, LED, Brightness, Contrast, Negative, Black and white, Split screen, Slideshow, Video capture, Digital scroll (pan/tilt), Flicker reduction, Image rotation, Source (PC/DC), Auto detect aspect

### Interface

**Interface Port**  
Input: VGA, Built-in microphone  
Output: VGA, USB-B, Composite video

**USB Interface**  
Audio, Video, Mass storage

### Other

**Operating Temperature**  
41 ° to 95 °F (5 ° to 35 °C)

**Operating Humidity**  
20 to 80%

**Power Supply Voltage**  
100 to 240 V AC/DC

**Power Frequency**  
50/60 Hz

**Output Voltage of AC Power Adapter**  
DC 12 V

**Power Consumption (operating)**  
14.5 W

### Power Consumption (standby mode)

0.46 W

**Analog Output Standard**  
NTSC/PAL

**Memory**  
1 GB internal  
SD card slot

**Security**  
Kensington® lock support  
Metal security bar  
Security mounting holes: 2

**Operating System Compatibility**  
Mac OS® X 10.5.x and 10.6.x  
Windows® 7, Windows Vista®, Windows XP SP2 or later

### Dimensions (W x D x H)

**Open**  
10.6" x 12.8" x 17.2"

**Closed/Folded**  
10.6" x 7.6" x 9.6"

**Weight**  
4.9 lb

### Application Software

**Language**  
13 languages

**Functions**  
Annotation, Edit, Preview, Video capture, Still image capture, Burst-capture, Time-lapse, Web upload, File management

**Saving Format**  
Still Image: JPG, BMP  
Video (Windows): WMV, MPG, AVI  
Video (Mac): MOV

### Support

**The Epson Connection<sup>SM</sup>**  
Pre-sales support (U.S. and Canada):  
800-463-7766  
Internet website:  
[www.epson.com](http://www.epson.com)

**Service Programs**  
Two-year limited warranty, Epson Road Service program, Epson PrivateLine® dedicated toll-free support

**What's In The Box**  
DC-11 Document Camera, AC power adapter with cord, USB cable, application software CD, remote control, (2) AA batteries, VGA cable, User's Guide CD, Quick Start guide, PrivateLine support card and registration cards

### Packaging Specifications

**DC-11 Document Camera**  
Dimensions 12.6" x 10.2" x 12.6" (W x D x H)  
Weight 9.4 lb  
**Country of Origin**  
China

**Touchboards**

205 Westwood Ave, Long Branch, NJ 07740  
Phone: 866-94 BOARDS (26273) / (732)-222-1511  
Fax: (732)-222-7088 | E-mail: [sales@touchboards.com](mailto:sales@touchboards.com)

1 Direct upload feature available on PC only.  
2 See our website for convenient and reasonable recycling options at [www.epson.com/recycle](http://www.epson.com/recycle)  
3 SmartWay is an innovative partnership of the U.S. Environmental Protection Agency that reduces greenhouse gases and other air pollutants and improves fuel efficiency.