

Quick Setup

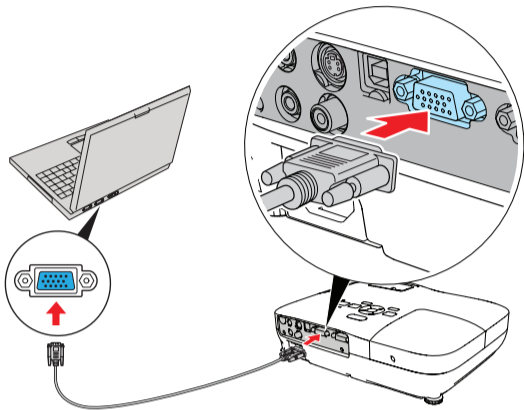
Before using the projector, make sure you read the safety instructions in the *User's Guide* on your projector CD.


Connect the projector

Choose from the following connections:

Computer Monitor Port


Connect a computer using the VGA cable that came with the projector.

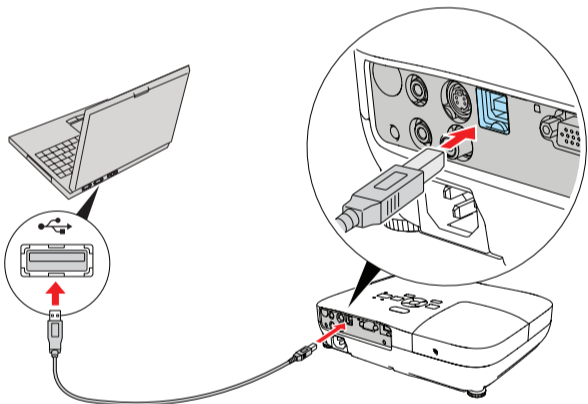


Connect one end to the projector's **Computer (Component Video)** port, and the other end to your computer's  monitor port. If you are using a notebook, switch it to external display. You can also connect an audio cable.

Computer USB Port (Windows® only)

Connect a computer using a USB cable (not included).

Connect the square end of the USB cable to the projector's  Type B (square) USB port. Connect the flat end of the cable to any USB port on your computer. You can also connect an audio cable.

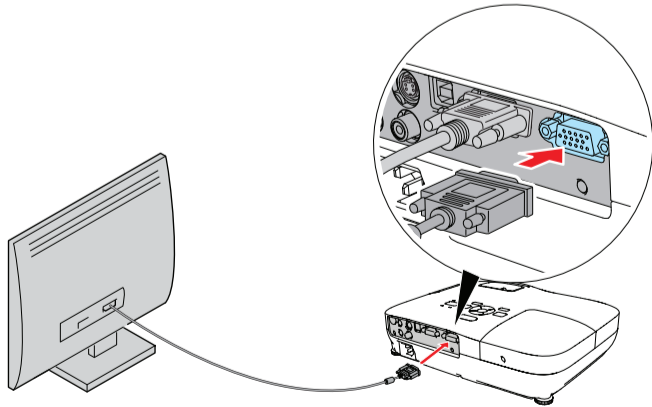


Follow the on-screen instructions to install the Epson USB Display software (only on first connection). Then press the **USB** button on the remote control.

NOTE: If the software does not install automatically, open *My Computer* or *Computer*, double-click **EPSON_PJ_UD**, then double-click **EMP_UDSE.EXE**.

External Monitor

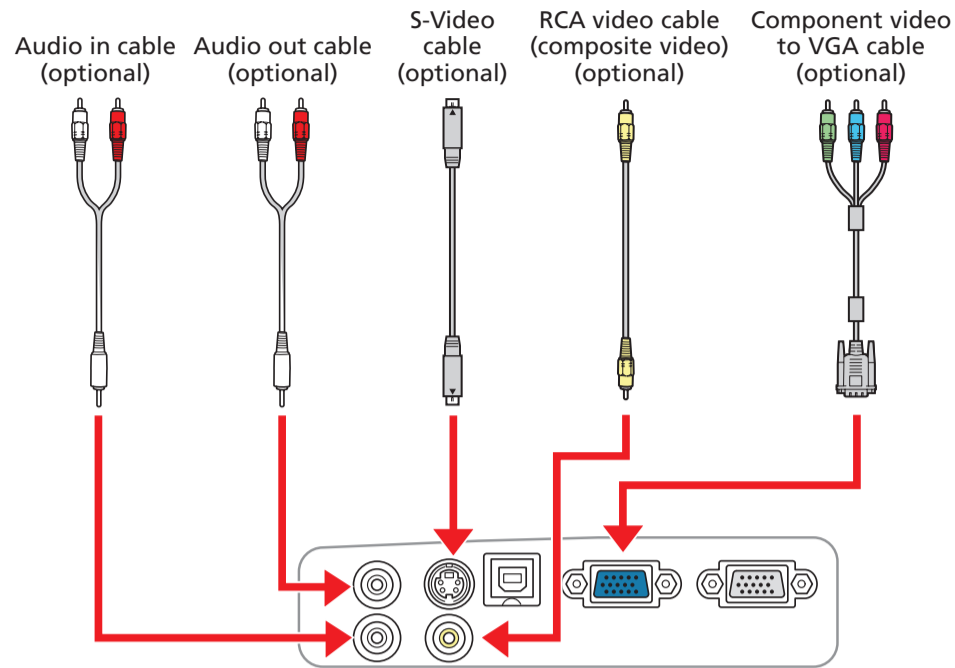
Connect a monitor to the **Monitor Out** port.



NOTE: To use an external monitor, your computer must be connected to the **Computer (Component Video)** port, not the USB port.

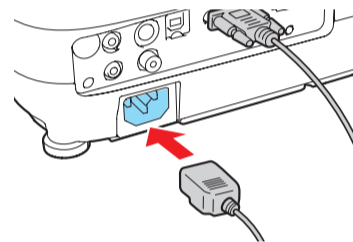
Video Player

Connect up to 3 video devices and use the remote control to switch between them.

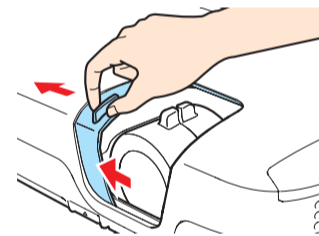



Turn on your equipment

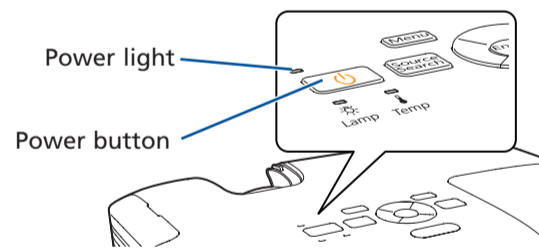
- 1 Turn on your computer or video source.
- 2 Plug in the projector.




- 3 Open the **A/V Mute** slide all the way.



- 4 Press the  power button on the projector or remote control.



The  power light flashes green, then stays on.

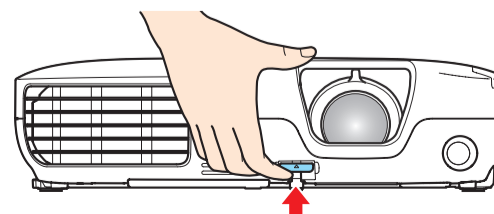
NOTE: To shut down the projector, press the  power button twice, then unplug it. You don't have to wait for the projector to cool down.

Adjust the image

- 1 If you don't see an image, press the **Source Search** button on the projector or remote control to select the image source.

NOTE: If you still see a blank screen or have other display problems, see the troubleshooting tips on the right.

- 2 To raise the image, press the foot release button and lift the front of the projector. Release the button to lock the foot in position.



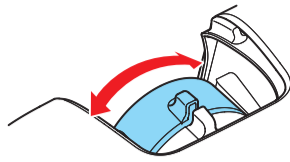
Touchboards

205 Westwood Ave, Long Branch, NJ 07740
 Phone: 866-94 BOARDS (26273) / (732)-222-1511
 Fax: (732)-222-7088 | E-mail: sales@touchboards.com

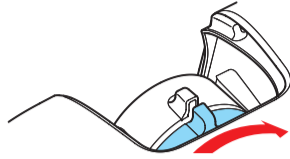


411760900

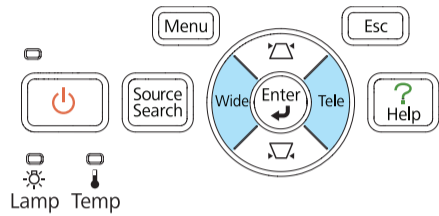
- 3 Turn the focus ring to sharpen the image.



- 4 **PowerLite 79/W7:** to reduce or enlarge the image, turn the zoom ring.



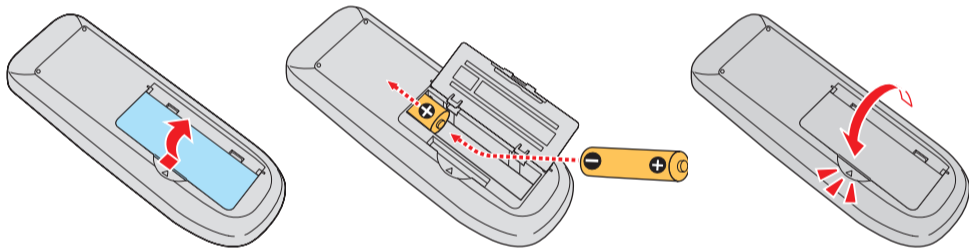
PowerLite S7: to reduce or enlarge the image, press the **Tele** (reduce) or **Wide** (enlarge) button on the projector. You can also use the **Zoom** option in the projector's Settings menu. See the *User's Guide* on your projector CD.



- 5 If your image looks like or , you've placed the projector off to one side of the screen at an angle. Place it directly in front of the center of the screen, facing the screen squarely.
- 6 If your image looks like or , press the or buttons on the projector to correct it.

Using the remote control

Make sure the batteries are installed as shown (two included AA batteries).



You can use the remote control to operate the projector. With the USB cable, you can use the remote as a wireless mouse. For more information on using the remote control, see your *User's Guide*.

Troubleshooting

If you see a blank screen...

If you see a blank screen or the **No signal** message after turning on your computer, check the following:

- Make sure the power light on the projector is green and not flashing, and the **A/V Mute** slide is open.
- Press the **Source Search** button on the projector or the remote control to select the computer as the image source.
- If you're using a Windows notebook, press the function key on your keyboard that lets you display on an external monitor. It may be labelled **CRT/LCD** or have an icon such as . You may have to hold down the **Fn** key while pressing it.

Where to get help

Manual

For more information about using the projector, install the *User's Guide* from your projector CD.

Telephone Support Services

To use the Epson PrivateLine® Support service, call (800) 637-7661 and enter the PIN on the Epson PrivateLine Support card included with your projector. This service is available 6 AM to 6 PM, Pacific Time, Monday through Friday, for the duration of your warranty period. You may also speak with a projector support specialist by dialing one of these numbers:

U.S.: (562) 276-4394, 6 AM to 6 PM, Pacific Time, Monday through Friday

Canada: (905) 709-3839, 6 AM to 6 PM, Pacific Time, Monday through Friday

Days and hours of support are subject to change without notice. Toll or long distance charges may apply.

Internet Support

Visit Epson's support website at epson.com/support and select your product for solutions to common problems. You can download utilities and documentation, get FAQs and troubleshooting advice, or e-mail Epson with your questions.

Registration

Register today to get product updates, special promotions, and customer-only offers. You can use the CD included with your projector, or register online at www.epson.com/webreg.



Epson is a registered trademark and Epson Exceed Your Vision is a registered logomark of Seiko Epson Corporation. PowerLite and PrivateLine are registered trademarks of Epson America, Inc.

General Notice: Other product names used herein are for identification purposes only and may be trademarks of their respective owners. Epson disclaims any and all rights in those marks.

This information is subject to change without notice.

© 2009 Epson America, Inc. 7/09
Printed in XXXXXX

CPD-27602