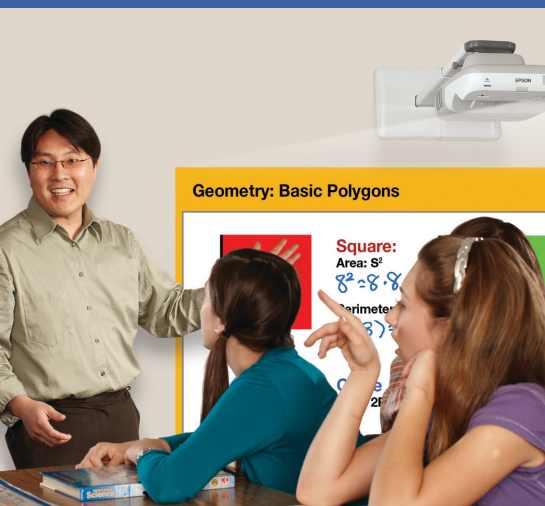


PROJECTOR ACCESSORIES

Solutions for
your classroom
and beyond

Touchboards

205 Westwood Ave, Long Branch, NJ 07740
Phone: 866-94 BOARDS (26273) / (732)-222-1511
Fax: (732)-222-7088 | E-mail: sales@touchboards.com



Upgrade your classroom

Make the most of your projector with quality accessories from Epson

Affordable | Simple to Set Up and Use | Quality You Can Trust



DC-06 and DC-11 Document Cameras

Share books, 3D objects, and detailed demonstrations or experiments with your entire class using Epson's compact, easy-to-use document cameras.

Conduct video conferences, share content from your iPad®, record lessons for viewing at a later time, and give your students a more interactive learning experience.



Note: Projected image simulated.

► DC-06

Compact, easy to use and easy on the budget, it's the perfect choice when you need portability or just reliable, everyday performance

- **Amazing clarity and color** — native XGA (1024 x 768) resolution
- **Large image capture area** — up to 10.7" x 14.3" for added ease of use
- **Flexible setup with USB connectivity** — connect to select EPSON® projectors or a PC/Mac® computer with included software
- **Easy image rotation** — 90-degree vertical and horizontal rotation to capture many angles; can be adjusted in landscape or portrait view
- **One-touch auto focus** — quickly and easily focus on an object

Part number: V12H321005



STEP UP TO THE DC-11

► DC-11

Advanced features include one-touch recording of both video and audio lessons, plus enhanced video performance

- **High-quality visual imagery** — 5-megapixel sensor, 10x digital zoom, and 30 frames-per-second video
- **Easily match your projector/computer resolution** — auto-select output resolution (SXGA, WXGA, XGA)
- **Large image capture area** — up to 12" x 17"; allows you to display two full pages
- **One-touch audio and video recording** — via included software and built-in microphone; PC and Mac compatible
- **Versatile connectivity** — USB, VGA and composite connections, plus built-in SD card slot to easily share images from or export images to an SD card

Part number: V12H377020



BrightLink Solo™

Add interactivity to your new or existing projector (any brand), at a fraction of the price with Epson's interactive module, BrightLink Solo. Easily transform virtually any wall or dry-erase whiteboard into an interactive learning area.

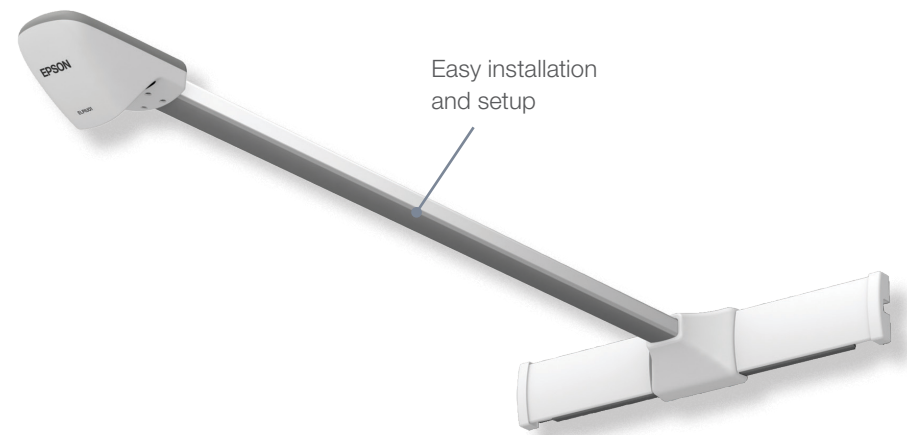
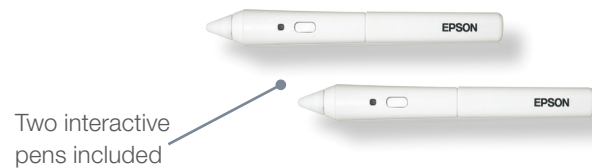
- **Maximize your interactive area** — works with any wall or standard whiteboard with up to a 96" (WXGA) or 102" (XGA) interactive display area
- **Installs in just minutes** — comes pre-attached to the arm and mounts on a flat wall with just a few simple steps (mounting plates included)
- **Everything you need to get started** — includes two interactive pens with rechargeable batteries, a battery charger and USB cable to attach to your computer
- **Easy integration** — cross-compatible with most instructional software applications; includes TeamBoard Draw™ annotation software; optional RM Easiteach™ solution also available

Part number: V12H415020

Part number: V12H415020RM
(includes RM Easiteach software)



Note: Projected image simulated.



Ultra-Short-Throw Projector Peripherals

Make the most of your EPSON ultra-short-throw projector by pairing it up with these affordable, user-friendly accessories. Designed specifically for EPSON projectors, these flexible products make it easy to mount your projector, take it from classroom to classroom, and more.

Touchboards

205 Westwood Ave, Long Branch, NJ 07740

Phone: 866-94 BOARDS (26273) / (732)-222-1511

Fax: (732)-222-7088 | E-mail: sales@touchboards.com



Note: Projected image simulated.

Height Adjustable Carts

Ideal for teachers and children of varying heights, as well as those with disabilities. Now everyone can participate in classroom lessons without limitations.

- **Portable** — carts can be conveniently rolled from classroom to classroom
- **Meets the needs of users of various heights** — enables everyone to easily reach the board; adjusts up to 17"

- **Height adjustments made easy** — includes easy-to-use lift button on handle for simple, one-handed height adjustments
- **Multi-purpose performance** — accommodates your EPSON ultra-short-throw projector, whiteboard and a computer

► 16:10 (WXGA) Cart

Use with standard or interactive whiteboards up to 96" diagonal (16:10)

Part number: V12H457008

► 4:3 (XGA) Cart

Use with standard or interactive whiteboards up to 85" diagonal (4:3)

Part number: V12H457007



Note: Projector and whiteboard sold separately. Shown with optional side laptop and front keyboard trays.

Cart Options

► Steel Lock Box

Store computer equipment and other valuables when not in use; includes key to lock

Part number: V12H457004

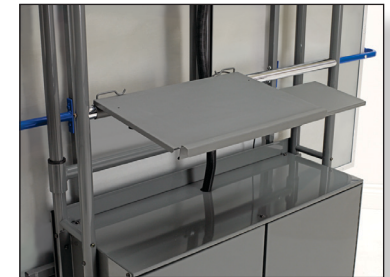


► Rear Laptop and Front Keyboard Trays

Store the laptop on a tray in the back and a keyboard in front for easy access

- **Slide-out mouse tray** — extends to either side

Part number: V12H457005



► Side Laptop Tray

For easy and convenient laptop access and control

- **Pin lock feature** — allows tray to be rotated up and out for easy access

Part number: V12H457006



Height Adjustable Wall Mounts

Allows teachers and students of varying heights to use the whiteboard; installed on the wall

- **Meets the needs of users of various heights** — enables everyone to easily reach the board; adjusts up to 17"
- **Easy installation** — mount installs over your existing whiteboard or blackboard to help maximize classroom space and reduce installation costs
- **Height adjustments made easy** — includes easy-to-use lift button on handle for simple, one-handed height adjustments
- **Multi-purpose performance** — accommodates your EPSON ultra-short-throw projector, whiteboard and a computer

► 16:10 (WXGA) Wall Mount

Use with standard or interactive whiteboards up to 96" diagonal (16:10)

Part number: V12H457010

► 4:3 (XGA) Wall Mount

Use with standard or interactive whiteboards up to 85" diagonal (4:3)

Part number: V12H457009

Conveniently installs over existing boards

Easy-lift button on handle



Note: Projector and whiteboard sold separately.

Whiteboards (16:10)

Dry-erase boards optimized for projection; the perfect companion for your widescreen (WXGA) projector and ideal for use with the Height Adjustable Carts and Wall Mounts

- **Minimal glare or reflection** — Egan Versa Surface (EVS™) technology provides a matte-white, low-gloss surface for quality projection
- **Reliability and strength** — designed for long-term classroom use with an aluminum frame and steel-backed construction
- **Includes everything you need** — comes ready to use with four whiteboard markers, one cleaning cloth, pen tray, assembly instructions and a three-year warranty

► 96" Whiteboard

Supports widescreen images up to 96" diagonal (16:10)

Part number: V12H468001

► 90" Whiteboard

Supports widescreen images up to 90" diagonal (16:10)

Part number: V12H468002

Multifunctional — projection surface and dry-erase board



Four whiteboard markers and cleaning cloth included.



Note: Projector sold separately.

Control Systems

Simplify projector control in your classroom with Epson's affordable control systems. Each offers expansive connectivity that maximizes control, with intuitive buttons, easy access, and no worries about finding that missing remote.



Note: Projected image simulated.

► PixiePlus™

Featuring a sleek, space-saving design, PixiePlus is an affordable, easy-to-use projector control system designed for in-wall installation

- **Convenient compatibility** — uses either RS-232 or IR commands to control your EPSON projector and classroom A/V devices; EPSON RS-232 commands are pre-installed
- **PC-free programming** — use the IR remote control for your A/V device(s) to quickly program the control system; optional programming wand available to simplify configuration of multiple control systems
- **Secure in any setting** — create your own security code to prevent unauthorized access

Easy installation — installs in any standard wall box



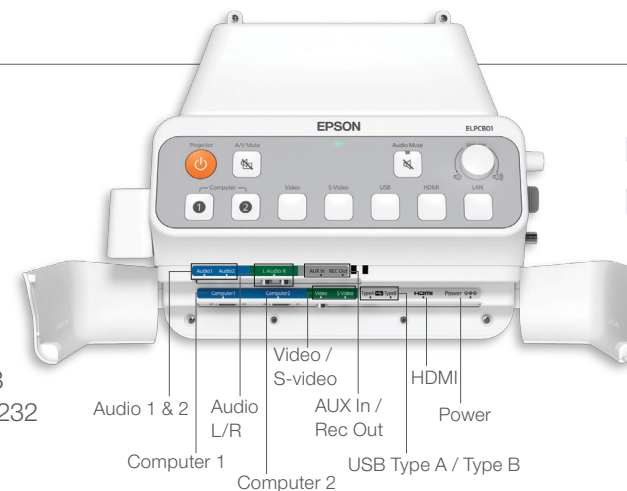
Save both money and energy — automatic projector shutdown timer feature

Part number: ELPSP10

► PowerLite® Pilot™ (ELPCB01)

Wall-mounted control box with comprehensive connections to control classroom A/V equipment

- **Convenient** — control your classroom audio/video devices, computer, iPod® and more
- **Sleek and clean design** — manage your EPSON short-throw or ultra-short-throw projector (power, A/V mute, volume, sources) via RS-232
- **Comprehensive input/output connections** — HDMI, AUX Audio, USB Type A, USB Type B, audio inputs, 2 VGA inputs, audio outputs, Rec out, S-video, Composite, RS-232
- **Use as an extension box** — expand the range of your cables for added flexibility



PowerLite Pilot Options

- ELPSP02 speakers
- ELPMC02 wireless microphone kit

(See page 9 for details on PowerLite Pilot Options)

Part number: V12H443020

Sound Enhancement

Engage every student and enhance the learning experience with rich, powerful sound that everyone in the classroom can hear. Studies have repeatedly proven that student performance improves when they can hear the teacher/lesson more clearly. Epson offers two sound enhancement options designed to meet the audio needs of schools and teachers in both features and affordability.



Note: Projected image simulated.

▶ AP-60

Fully integrated sound enhancement solution that includes everything necessary to provide quality sound and voice amplification to the entire classroom

- **Sound that fills the room** — quad-directional speakers and 60 W of sound
- **Optimized for voice enhancement** — includes a wireless IR pendant microphone (supports up to two); works with an iPod or MP3 player
- **Customizable setup for any environment** — make front/rear balance adjustments to optimally direct the sound toward your audience
- **Added audio support, including audio out** — supports multiple audio inputs and one audio output
- **Unique design for easy installation** — can be installed with new or existing ceiling-mounted projectors using standard, 1.5" projector mounting equipment

Part number: V12H329020



Wireless pendant microphone included

▶ Wireless Pendant Microphone Kit (ELPMC02)*

- **Amplifies the teacher's voice** — prevents vocal strain and ensures the entire class will hear the lesson clearly
- **All-inclusive** — includes pendant microphone, IR receiver unit (fits inside the PowerLite Pilot), and IR dome sensor

* Only works with PowerLite Pilot



Part number: V12H4430M2

▶ Active Speakers (ELPSP02)

Affordable, wall-mountable, 30 W classroom speaker set, designed to amplify classroom lessons

- **Upgrade your audio** — two portable speakers with built-in amplifier provide 30 W of captivating sound to fill any classroom
- **Versatile and easy to use with any projector** — mount on the wall with included wall-mount brackets or place on a desk/table

Part number: V12H467020



Easy-to-Install Projector Mounts

Built for value and flexibility, Epson's easy-to-install projector mounts offer a clean, sleek appearance with a design that's ready for use both now and in the future.



Homework
MATH Pages 21-33
SCIENCE
Our Solar System
READING Chapter 5



Note: Projected image simulated.

▶ Short-Throw Projector Wall Mount (ELPMB27)

For the PowerLite 410W, 420, 425W, 430, 435W

- **Optimal viewing experience** — get reduced shadows and glare when used with Epson's short-throw projectors
- **Secure and easy to install** — installs onto one or two wall studs
- **Easily adjustable** — telescopic extension arm supports a throw distance from 27" to 47"
- **Ideal for use with virtually any screen, dry-erase or interactive whiteboard**
 - **16:10 (WXGA)** — content from 68" to 113" with the PowerLite 410W, 425W and 435W
 - **4:3 (XGA)** — content from 63" to 106" with the PowerLite 420 and 430
- **Easy image alignment** — vertical and horizontal shift adjustments, plus pitch, roll, and swivel adjustments

Part number: V12H003Z27



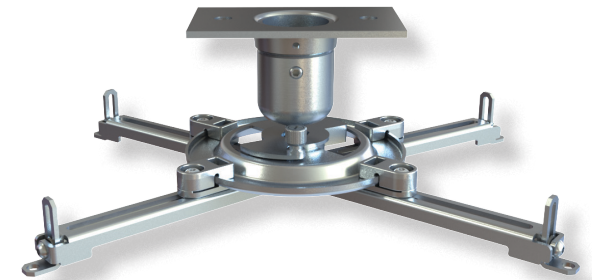
Note: Projector sold separately.

▶ Universal Projector Ceiling Mount

For projectors under 50 lb

- **Quick image alignment** — single adjustment point
- **Low-profile installation** — convenient design makes flush mounting easy
- **Easy access when needed** — quick-release mechanism
- **Easy to route cables through** — includes extension column connector
- **Theft prevention** — includes security hardware

Part number: ELPMBPJF



Ceiling Mount Options

▶ Adjustable Suspended Ceiling Channel Kit

For use in false ceiling/suspended ceiling environments

- **Easily adjustable** — carriage allows for simple projector positioning below a 2' x 2' or 2' x 4' ceiling tile
- **Convenient** — includes tie wire supports, flush mount tube, and two knockout panels for electrical outlet boxes
- **Compatible with optional adjustable extension column** — via 1.5" pipe fitting

Part number: ELPMBP01



▶ False Ceiling Plate Kit

Replaces a ceiling tile

- **Easy installation** — replaces a 2' x 2' ceiling tile and mounts to a structural ceiling with tie wires
- **Flexible, two-piece design** — five different points for mount attachment
- **Convenient** — includes tie wire supports, flush mount tube, and two knockout panels for electrical outlet boxes
- **Compatible with optional adjustable extension column** — via 1.5" pipe fitting

Part number: ELPMBP02



► Structural Round Ceiling Plate

For use in structural/permanent ceiling environments

- **Easy installation** — mounts to a wood joist or structural concrete ceiling
- **Convenient** — features a cable management access hole
- **Compatible with optional adjustable extension column** — via 1.5" pipe fitting

Part number: ELPMBP03



► Adjustable Extension Column (pipe) 8" – 11"

For when you need to lower the projector

- **Easily adjustable** — includes an 8" – 11" adjustable extension (adjusts in 1" increments)
- **Easy installation** — features a pipe fitting, threaded on both ends, designed to allow cable management
- **Safe and secure** — offers notched ends for use with set screws

Part number: ELPMB01



► InterakTABLE Table Mount

Designed for use with BrightLink® 455Wi interactive projectors, this product turns your table into an interactive workspace — all at a fraction of the cost of similar solutions

- **Easy** — attaches quickly to most tables
- **Portable** — create an interactive surface almost anywhere
- **Flexible** — vertically adjustable; provides accessibility for students of various heights, as well as those using wheelchairs; supports interactive images from 50" to 60" diagonally

Part number: V12H492001



Note: Projector sold separately.

Projector Compatibility Chart

Product	Part Number	PowerLite S11/X12/X15	PowerLite 9x/9xx	PowerLite 42x/43x BrightLink 42x/43x	PowerLite 450W/460 BrightLink 455Wi	PowerLite 47x/48x BrightLink 47x/48x	PowerLite 17xx	PowerLite Pro G5xxx	PowerLite 4xxx	PowerLite D6xxx	PowerLite 19xx	PowerLite 18xx	PowerLite 12xx
DC-06	V12H321005	✓	✓	✓	✓	✓	✓	✓	✓	✓	✓	✓	✓
DC-11	V12H377020	✓	✓	✓	✓	✓	✓	✓	✓	✓	✓	✓	✓
BrightLink Solo	V12H415020	✓	✓	✓	PowerLite 450W/460	PowerLite 47x/48x	✓	✓	✓	✓	✓	✓	✓
BrightLink Solo with RM Easiteach	V12H415020RM	✓	✓	✓	PowerLite 450W/460	PowerLite 47x/48x	✓	✓	✓	✓	✓	✓	✓
4:3 Height Adjustable Cart	V12H457007	✗	✗	✗	PowerLite 460	*	✗	✗	✗	✗	✗	✗	✗
16:10 Height Adjustable Cart	V12H457008	✗	✗	✗	PowerLite 450W/ BrightLink 455Wi	*	✗	✗	✗	✗	✗	✗	✗
4:3 Height Adjustable Wall Mount	V12H457009	✗	✗	✗	PowerLite 460	*	✗	✗	✗	✗	✗	✗	✗
16:10 Height Adjustable Wall Mount	V12H457010	✗	✗	✗	PowerLite 450W/ BrightLink 455Wi	*	✗	✗	✗	✗	✗	✗	✗
InterakTABLE Table Mount	V12H492001	✗	✗	✗	BrightLink 455Wi	✗	✗	✗	✗	✗	✗	✗	✗
Table Mount	V12H516020	✗	✗	✗	✗	BrightLink 47x/48x	✗	✗	✗	✗	✗	✗	✗
90" Whiteboard	V12H468002	✓	✓	✓	✓	✓	✓	✓	✓	✓	✓	✓	✓
96" Whiteboard	V12H468001	✓	✓	✓	✓	✓	✓	✓	✓	✓	✓	✓	✓
PixiePlus	ELPSP10	✓	✓	✓	✓	✓	✓	✓	✓	✓	✓	✓	✓
PowerLite Pilot	V12H443020	✗	✗	✓	✓	✓	✗	✗	✗	✗	✗	✗	✗
ELPSP02 Active Speakers	V12H467020	✓	✓	✓	✓	✓	✓	✓	✓	✓	✓	✓	✓
AP-60	V12H329020	✓	✓	✗	✗	✗	✓	✓	✓	✓	✓	✓	✓
Short-Throw Wall Mount	V12H003Z27	✗	✗	✓	✗	✗	✗	✗	✗	✗	✗	✗	✗
Universal Projector Ceiling Mount	ELPMBPJF	✓	✓	✓	✗	✗	✓	✓	✓	✓	✓	✓	✓
Adjustable Suspended Ceiling Channel Kit	ELPMBP01	✓	✓	✓	✗	✗	✓	✓	✓	✓	✓	✓	✓
False Ceiling Plate Kit	ELPMBP02	✓	✓	✓	✗	✗	✓	✓	✓	✓	✓	✓	✓
Structural Round Ceiling Plate	ELPMBP03	✓	✓	✓	✗	✗	✓	✓	✓	✓	✓	✓	✓
Adjustable Extension Column 8" — 11"	ELPMBC01	✓	✓	✓	✗	✗	✓	✓	✓	✓	✓	✓	✓

* May require different part number.

Projector/Accessory Bundles

Document Camera Bundles	Part Number
PowerLite 92/DC-11	V11H38102011
PowerLite 93/DC-11	V11H38202011
PowerLite 95/DC-11	V11H38302011
PowerLite 96W/DC-11	V11H38402011
PowerLite 420/DC-11	V11H44702011
PowerLite 425W/DC-11	V11H44802011
PowerLite 430/DC-11	V11H46902011
PowerLite 435W/DC-11	V11H44902011



Interactivity — BrightLink Solo Bundles	Part Number
PowerLite 92/BrightLink Solo	V11H38102020
PowerLite 92/BrightLink Solo w/RM	V11H38102021
PowerLite 93/BrightLink Solo	V11H38202020
PowerLite 93/BrightLink Solo w/RM	V11H38202021
PowerLite 95/BrightLink Solo	V11H38302020
PowerLite 95/BrightLink Solo w/RM	V11H38302021
PowerLite 96W/BrightLink Solo	V11H38402020
PowerLite 96W/BrightLink Solo w/RM	V11H38402021



Wall Mount Bundles	Part Number
PowerLite 420/Wall Mount	V11H44702027
PowerLite 425W/Wall Mount	V11H44802027
PowerLite 430/Wall Mount	V11H46902027
PowerLite 435W/Wall Mount	V11H44902027



Lamp Bundles	Part Number
PowerLite 92/Lamp (with ELPLP60)	V11H38102002
PowerLite 93/Lamp (with ELPLP60)	V11H38202002
PowerLite 95/Lamp (with ELPLP60)	V11H38302002
PowerLite 96W/Lamp (with ELPLP60)	V11H38402002
PowerLite 905/Lamp (with ELPLP60)	V11H38702002
PowerLite 915W/Lamp (with ELPLP61)	V11H38802002
PowerLite 420/Lamp (with ELPLP60)	V11H44702002
PowerLite 425W/Lamp (with ELPLP60)	V11H44802002
PowerLite 430/Lamp (with ELPLP61)	V11H46902002
PowerLite 435W/Lamp (with ELPLP61)	V11H44902002
PowerLite 420/Mount (ELPMB27)/Lamp (with ELPLP60)	V11H447020M2
PowerLite 425W/Mount (ELPMB27)/Lamp (with ELPLP60)	V11H448020M2
PowerLite 430/Mount (ELPMB27)/Lamp (with ELPLP61)	V11H469020M2
PowerLite 435W/Mount (ELPMB27)/Lamp (with ELPLP61)	V11H449020M2





Touchboards
205 Westwood Ave, Long Branch, NJ 07740
Phone: 866-94 BOARDS (26273) / (732)-222-1511
Fax: (732)-222-7088 | E-mail: sales@touchboards.com

Better Products for a Better Future™

For more information on Epson's environmental programs, go to eco.epson.com

EPSON®
EXCEED YOUR VISION

Epson America, Inc.
3840 Kilroy Airport Way, Long Beach, CA 90806

Epson Canada Limited
185 Renfrew Drive, Markham, Ontario L3R 6G3

www.epson.com
www.epson.ca

EPSON and PowerLite are registered trademarks, EPSON Exceed Your Vision is a registered logomark and Better Products for a Better Future is a trademark of Seiko Epson Corporation. BrightLink is a registered trademark and BrightLink Solo and Pilot are trademarks of Epson America, Inc. iPad, iPod and Mac are trademarks of Apple, Inc., registered in the U.S. and other countries. All other product and brand names are trademarks and/or registered trademarks of their respective companies. Epson disclaims any and all rights in these marks. Copyright 2011, Epson America, Inc. 12/11 CPD-35453