

PathFindIR™

Driver's Night Vision System



PATHFINDER

Driving at night is one of the most dangerous things you will ever do. Headlights only show you a small part of the road in front of your vehicle; they can't help you see pedestrians or vehicles beyond their limited range, or on either side of the road.

PathFindIR is a powerful night vision camera that helps you see clearly in total darkness.

- See pedestrians and vehicles past the glare of oncoming headlights
- See many hazards from over four times farther away than with headlights
- See the sides of the road with PathfindIR's wide-angle view
- See through dust and smoke
- Have more time to react
- Avoid accidents and stay safe



PATHFINDER

Driving at night is one of the most dangerous things you will ever do. Headlights only show you a small part of the road in front of your vehicle; they can't help you see pedestrians or vehicles beyond their limited range, or on either side of the road.

PathFindIR is a powerful night vision camera that helps you see clearly in total darkness.

- See pedestrians and vehicles past the glare of oncoming headlights
- See many hazards from over four times farther away than with headlights
- See the sides of the road with PathfindIR's wide-angle view
- See through dust and smoke



TRUCKS, COMMERCIAL VEHICLES AND RV'S

Nighttime driving is more than twice as dangerous as driving during the day. Still, truckers, commercial operators, and RV drivers often find themselves on the road at night. PathFindIR gives night drivers the added margin of safety they need to avoid costly accidents.



YOUR VISION

Between parked cars and the glare of oncoming headlights, pedestrians can come out of nowhere on a crowded city street.



FLIR VISION

People are often the warmest objects in a scene, making them easy to see with PathFindIR. Immune to headlight glare, PathFindIR lets you see clearly.

COMPACT, EASY TO INSTALL

PathFindIR is a lightweight, compact thermal imager that literally fits in the palm of your hand. It installs easily into almost any truck, commercial vehicle or RV. You can watch PathFindIR's video on almost any monitor, built-in or aftermarket. All a screen needs is an auxiliary video input, and it's good to go.

The display becomes a natural checkpoint, just like your rearview mirror. A quick glance at the monitor can help you identify hazards you otherwise might not see in time to avoid.

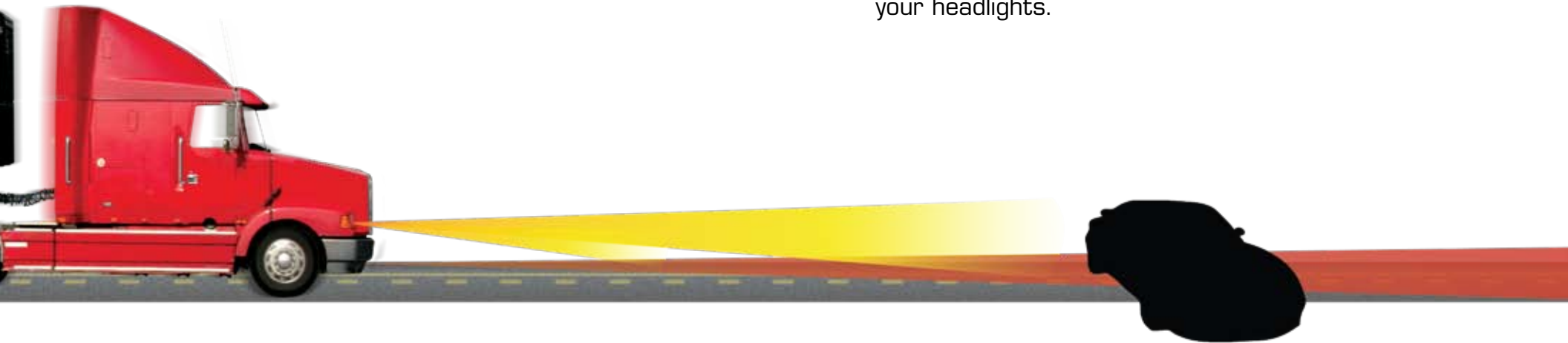


RANGE CHART

With PathFindIR you can see four times farther than you can with headlights, but that's only part of the story. As the graphic below shows, even under ideal conditions headlights only let drivers see about 450' straight ahead and almost nothing to either side. Large vehicles like commercial trucks and RVs can take a long time to stop, so they easily outrun their headlights when driving at highway speeds. Able to see pedestrians from over 1,000' away – and vehicles even farther – PathFindIR gives drivers more time to react, and more room to stop.

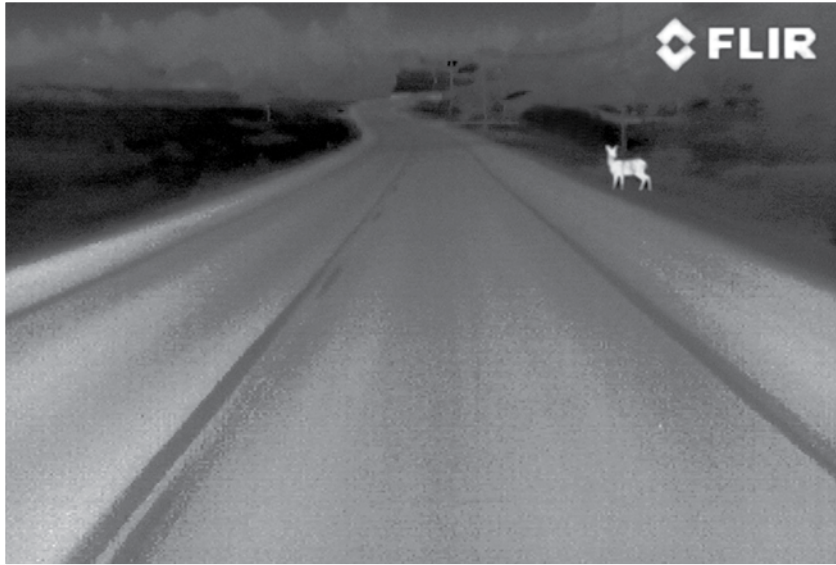


PathFindIR shows you disabled vehicles – and the people working on them – long before they're illuminated by your headlights.



LOW BEAM

HIGH BEAM



PathFindIR sees the heat from animals approaching the road long before you could with headlights.



PathFindIR lets you see pedestrians and other hazards well beyond the range of your headlights.



PathFindIR

ECONOMIC BENEFITS

Avoid just one accident and PathFindIR pays for itself many times over. With PathFindIR you can see more and see farther than with your headlights, giving you more time to react to road hazards. This increased reaction time can save lives and money. On poorly lit and unfamiliar roadways, the PathFindIR does more than let you see the road ahead; it shows you animals and vehicles approaching from either side. Pedestrians, disabled vehicles, joggers, and other hazards can't hide from PathFindIR. See more, react sooner, and arrive safely.

THE FLIR ADVANTAGE

In addition to becoming a vital safety feature on passenger cars, over-the-road trucks, commercial vehicles and RVs; PathFindIR is being used by state and local police, on fire and ambulance vehicles and on underground mining vehicles. FLIR's thermal imaging technology is also available as an option on BMW's 5, 6 and 7 series automobiles.



WHAT IS THERMAL IMAGING?

With our eyes, we see visible light. With a thermal imager, we see heat. Thermal imagers detect subtle differences in temperature and display them as black and white TV video: warmer objects appear light and cooler objects appear dark.

Thermal imagers usually see an object's heat from much farther away than you can see the same thing with your eyes. Thermal imagers make pictures by detecting and displaying differences in heat. This energy is invisible to the naked eye, but everything makes it – even the ice she is holding! The differences in heat don't have to be very big for a thermal imager to see them clearly. Just the friction from her finger and the heat from her hand left enough heat on the wall to show up clearly to the PathFindIR.

Just imagine how much more heat cars, pedestrians, and animals give off!



SYSTEM OVERVIEW



THERMAL IMAGER

Sensor Type:	320 x 240 Uncooled Microbolometer
Field-of-View:	36° H x 27° V
Spectral Band:	8-14 microns (LWIR)
Outputs	NTSC & PAL

POWER

Power Requirements:	9-16 VDC
Power Consumption:	<2 W (<5 W w/heater on)

ENVIRONMENTAL

Operating Temperature:	-40°C – 80°C
Weather Resistance:	Hermetically Sealed, Automotive Qualified
Window:	High-Impact Resistant with Built-in Automatic Heating Element

DIMENSIONS/WEIGHT

PathFindIR:	2.3" x 2.8" x 3.3" (57.4 x 71.4 x 84.7 mm)
Weight:	0.8 lb (363 grams)



The World Leader in Infrared

CVS World Headquarters

FLIR Systems, Inc.
70 Castilian Dr.
Goleta, CA 93117
USA
PH: + 1 877 773 3547
PH:+ 1 805 964 9797
FX: + 1 805 685 2711
sales@flir.com

CVS Eurasian Headquarters

FLIR Systems CVS BV
Charles Petitweg 21
4847 NW Teteringen - Breda
Netherlands
PH: +31 (0) 765 79 41 94
FX: +31 (0) 765 79 41 99
flir@flir.com

Corporate Headquarters

FLIR Systems, Inc.
27700 SW Parkway Ave.
Wilsonville, OR 97070
USA
PH: + 1 877 773 3547
FX: + 1 503 498 3153
sales@flir.com



**205 Westwood Ave
Long Branch, NJ 07740
1-877-742-TEST (8378)
Fax: (732) 222-7088
salesteam@Tequipment.NET**