

FLIR E-Series Thermal Imaging Cameras



205 Westwood Ave
Long Branch, NJ 07740
1-877-742-TEST (8378)
Fax: (732) 222-7088
salesteam@Tequipment.NET



E-Series

Revolutionary Performance

Superior Point & Shoot Thermal Imagery

Built-in Digital Camera & Laser Pointer

Mobile Device Wi-Fi Connectivity

Large Bright Touchscreen

Groundbreaking Affordability



Large 3.5" Touchscreen Puts Thermal Details at Your Fingertips



- 2.0 or 3.1 MP Digital Camera
- LED Lamp
- Laser Pointer

Visible Light Pictures Align with Thermal Images

The E-Series



Connect to Apple® and Android™ mobile devices with FLIR Wi-Fi apps to import, process, and share images and data fast.



Large Backlit Buttons Fit Bare Hands or Gloves

E-Series Features

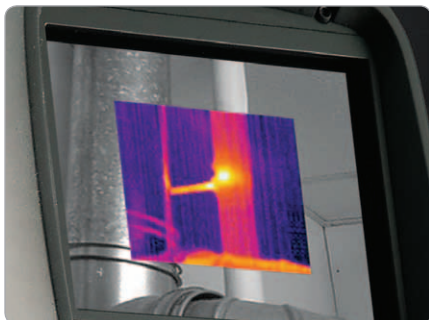
Presenting the best performance and value in point-and-shoot thermal imaging cameras ever, designed to fit beautifully into your IR inspection program, budget, and the palm of your hand.



Spot LED Light for Dark Corners



Add Up to 3 Moveable Measurement Spots Easily



Picture-in Picture Display

Superior Thermal Imaging – Up to 76,800 pixels (320 × 240) for better long-range accuracy and the highest level of point & shoot camera IR resolution

Convenient Digital Camera – Every E-Series model provides clear visible light pictures to reference with thermal images for stronger documentation; also includes bright LED lamp that doubles as a flashlight

Large Landscape Touchscreen – Brighter than other brands, the E-Series touchscreen provides an intuitive interface that takes full advantage of the entire 3.5" display with no image cropping

Wi-Fi Connectivity – Send images and data to an Apple or Android mobile device to create and share reports and critical information quickly using new FLIR Wi-Fi apps

Laser Pointer – Pinpoints a reference spot with a laser and aligns a marker to it on the image for precise detection

Accurate Temperature Measurements – Accuracy calibrated within 2% or +/- 2°C to meet the standard you can always trust FLIR to deliver

Scalable P-i-P and Thermal Fusion – Overlay thermal and visible images for easy location identification and clearer documentation

Multiple Measurements – Add up to 3 box areas and 3 moveable spots using the touchscreen to gather more detailed temperature information

Perpetual Battery Operation – 2-bay charger and spare battery option means plenty of power to keep you running all day

MeterLink – Measure more than temperature with your camera by connecting clamp and moisture meters directly to the E-Series for annotating thermal images to further support findings and decisions

Annotation – Add voice comments via Bluetooth headset and text notes from the touchscreen keypad

InstantReport – Generate a professional PDF document directly from the camera right on site

Plenty of Extras – Small, light, and rugged with large, backlit, easy-to-operate buttons, 6 palette choices, and more

A New Choice in Thermal Imaging Performance

- **E30** – 19,200 pixels
Built-in 2.0 MP visible light camera with lamp & laser pointer
- **E40** – 19,200 pixels
Wi-Fi to mobile devices & a 3.1 MP visible light camera
- **E50** – 43,200 pixels
Superior accuracy and sensitivity
- **E60** – 76,800 pixels
Best point & shoot thermal resolution

E30

Includes:

- High quality thermal imaging at 19,200 pixels (160 × 120)
- 2.0 megapixel digital visible light camera with lamp
- Thermal sensitivity of 0.10°C
- 3.5" touch-screen LCD
- Manual focus
- 60 Hz image frequency
- Auto/manual level span adjustments
- Temperature calibration standard at 350°C
- Isotherm and automatic hot/cold detection marker
- Radiometric and non-radiometric IR video streaming
- Laser pointer
- Composite video and USB-mini outputs
- FLIR Tools software for camera updates

E40

Additional Features:

- 3.1 megapixel digital visible light camera with lamp
- FLIR Wi-Fi app connectivity to Apple and Android mobile devices
- Thermal sensitivity of 0.07°C
- Picture-in-Picture to overlay thermal and digital images
- Temperature calibration standard at 650°C
- DeltaT temperature difference function
- 2x digital zoom
- 3 moveable spots and 3 box areas
- Voice & text annotation
- MPEG 4 video recording
- MeterLink via Bluetooth to clamp and moisture meters

E50

Additional Features:

- Higher quality IR at 43,200 pixel (240 × 180) resolution
- Thermal sensitivity of 0.05°C
- 4x digital zoom
- Thermal fusion to blend IR with visible light images
- Scalable Picture-in-Picture

E60

Additional Features:

- Best point & shoot resolution at 76,800 pixels (320 × 240)
- 2-bay charger and spare battery included for perpetual battery operation
- InstantReport



Wi-Fi Connectivity to Mobile Devices

Import, Process, and Share Images and Data Quickly

Download the FLIR Viewer app to iPhone®, iPad®, and iPod touch® or FLIR Tools Mobile to Android™ mobile devices and link to E40, E50, and E60 cameras via Wi-Fi. Transfer images to your mobile device, then use it to add further measurement spots, readjust span and level, change palettes, create reports, and email findings to decision makers easily. It's an efficient way to make a big impact.



MeterLink™

Measure More than Temperature

Be sure you're getting critical electrical load readings so you make the right call. Quantify the severity of electrical problems with MeterLink-enabled clamp meters that use Bluetooth wireless communication to send data to the FLIR camera for annotation on stored thermal images. Contact FLIR to learn about other tools that connect with MeterLink.

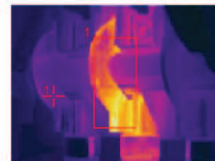


InstantReport

Generated Directly from Your Camera

Create professional reports on board your camera with InstantReport. FLIR's analysis software has always offered professional results and been easy to use. Now create reports without a PC! InstantReport includes thermal and visual images along with your measurement tools and text & sketch annotations in a standard PDF document that's easy to share right from the touchscreen.

Thermogram 2010-07-21 10:47 AM



building 18 - electrical



Measurements

Spot 1	77.3°C
Area 1 Max	217.7°C
Ar1max-Sp1	140.4°C

DC	08.5A
DC	08.5A

Parameters

Emissivity	0.98
Ref1 temp	20.0°C
Obj dist	1.0m
FOV	25°



Imaging Specifications

Model Number	E30	E40	E50	E60
Imaging				
Resolution	160 x 120	160 x 120	240 x 180	320 x 240
Total Pixels	19,200	19,200	43,200	76,800
Thermal Sensitivity	<0.10°C	<0.07°C	<0.05°C	<0.05°C
Accuracy	+/-2% or 2°C			
Temperature Range	-4°F to 662°F (-20°C to 350°C)	-4°F to 1,202°F (-20°C to 650°C)		
Lens Options	Standard: 25°; Optional: 15° Tele, 45° Wide			
Zoom		2x Continuous Digital	4x Continuous Digital	4x Continuous Digital
Focus	Manual			
Uncooled Microbolometer	x	x	x	x
Color LCD Touch Screen	3.5" (320 x 240)			
Video Camera w/Lamp	2.0 MP	3.1 MP	3.1 MP	3.1 MP
Picture-in-Picture		Fixed	Scalable	Scalable
Fusion			x	x
Laser Spot	x	x	x	x
Video Out	Composite			
Frame Rate	60 Hz			
Analysis				
Moveable Spots	1	3	3	3
Box Areas	1	3	3	3
Delta T		x	x	x
Annotation				
Voice		x	x	x
Text		x	x	x
File Storage				
Radiometric JPG to SD Card	x	x	x	x
MPEG4 Video Recording		x	x	x
Other				
Wi-Fi to Apple & Android Mobile Devices		x	x	x
MeterLink		x	x	x
InstantReport				x
FLIR Tools	x	x	x	x
Battery Type/Op & Charge Time	Li-Ion batteries/4 hours			
Dual-bay Charger & Spare Battery	Optional			Included
Weight	1.82 lbs (0.825 kg) including lens			
Warranty	10 Year Detector/5 Year Battery/2 Year Parts & Labor			
Optional Accessories	15° and 45° lenses, sunshield, tripod adapter, cigarette lighter adapter kit, Bluetooth headset, and more			



10-Year Detector Protection
5-Year Battery
2-Year Parts & Labor



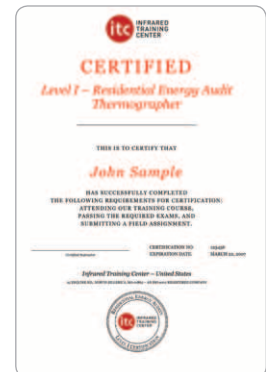
Accessories include 15° and 45° lenses, sunshield, tripod adapter, cigarette lighter adapter kit, Bluetooth headset, and more.



Infrared Training Center

Get the most out of your FLIR investment and advance your career with world-class instruction through the Infrared Training Center. An ITC certificate is written proof of your expertise in operating your camera and interpreting the thermal information it provides.

For full course descriptions, updated schedules, and more information, visit www.infraredtraining.com or call 1.866.872.4847.



205 Westwood Ave
Long Branch, NJ 07740
1-877-742-TEST (8378)
Fax: (732) 222-7088
salesteam@Tequipment.NET