

FLIR E-Series

The New E40, E50 and E60, Now with MSX® Advanced Thermal Imaging Camera Performance

Troubleshoot more efficiently, create detailed reports easier, and share images and findings faster with FLIR's latest E-Series thermal imagers. Featuring a fresh array of imaging, communication, and productivity tools to help you get more done in a day.

FLIR Tools Mobile Communication – Connect an E-Series camera to smartphones and tablets with our Wi-Fi app. Stream live video so others can watch along. Import radiometric JPEGs, adjust levels, add measurement tools, then send images off in simple reports via email to expedite repair decisions.

Superior Thermal Imaging – Up to 76,800 pixels (320 x 240) for better long-range accuracy and the highest level of point & shoot camera IR resolution.

MSX Thermal Image Enhancement – See numbers, labels and other key visual details not normally apparent in a regular thermal image with an all-in-one thermal picture that instantly orients you to right where heat issues are.

Onboard Digital Camera – 3.1MP resolution provides clear visible light reference pictures; includes built-in LED lamp that doubles as a flashlight plus a laser pointer to mark locations.

Large Touchscreen with Auto-Orientation – The E-Series touchscreen provides an intuitive interface that takes full advantage of the entire 3.5" display for easy access to diagnostics tools, and measurement and other data overlays stay upright no matter how you hold the camera.

Picture-in-Picture – Overlay thermal images onto digital scenes for extra location documentation.

Multiple Measurements – Add up to 3 box areas and 3 moveable spots using the touchscreen to gather more detailed temperature information.

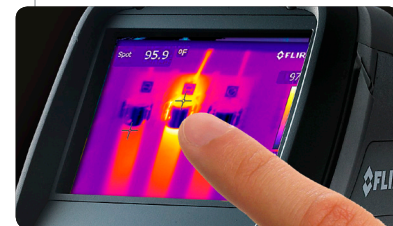
MeterLink® – Measure more than temperature. Send diagnostics data by Bluetooth from compatible clamp and moisture meters directly to E-Series cameras to embed extra information into thermal images as you capture them that further supports findings.

Interchangeable Lenses and Manual Focus – Optional wide-angle and telephoto optics let you capture more of a scene in one shot or get in closer to measure smaller, distant targets. Full focus control help you dial in the sharpest clarity and accuracy.

Higher Temperature Range & Sensitivity – Measure hotter-running equipment with higher 650°C (1,202°F) detection, and see subtler temperature patterns and detail with E-Series' greater sensitivity.



FLIR Tools Mobile Wi-Fi Connectivity



Large 3.5" Touchscreen



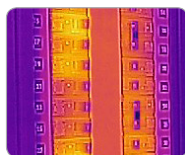
Auto-Orientation Keeps Diagnostics Overlays Upright



Visible Light Pictures Align with Thermal Images: 3.1MP Digital Camera, LED Lamp, and Laser Pointer



Large Buttons for Easy Glove-Handed Operation

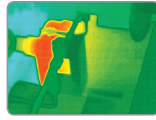
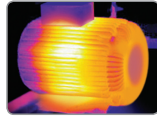
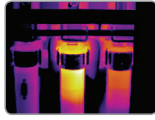


MSX Image Enhancement



Bluetooth® METERLiNK® Communication

Applications



Electrical: Hot Fuses

Motor: Internal Winding Problem

Motor: Bearing Problem

Imaging Specifications

FEATURES	FLIR E40	FLIR E50	FLIR E60
Temperature range	-4 to 1202°F (-20 to 650°C)	-4 to 1202°F (-20 to 650°C)	-4 to 1202°F (-20 to 650°C)
Thermal sensitivity (N.E.T.D)	<0.07°C at 30°C	<0.05°C at 30°C	<0.05°C at 30°C
Detector Type - Focal plane array; (FPA) uncooled microbolometer	160 x 120 pixels	240 x 180 pixels	320 x 240 pixels
MSX® Thermal Image Enhancement	Yes	Yes	Yes
Picture-in-Picture (P-i-P)	Fixed P-i-P	Scalable P-i-P	Scalable P-i-P
MPEG 4 Video Recording	Yes	Yes	Yes
Video Camera w/Lamp & Laser	3.1MP/LED Lamp/Laser pointer	3.1MP/LED Lamp/Laser pointer	3.1MP/LED Lamp/Laser pointer
Digital Zoom	2X Continuous	4X Continuous	4X Continuous
Image annotation	Voice (60s)/Text Comments	Voice (60s)/Text Comments	Voice (60s)/Text Comments
Moveable Spot	3 Spotmeters	3 Spotmeters	3 Spotmeters
Area Box	3 Area Boxes (full image with min/max/avg)	3 Area Boxes (full image with min/max/avg)	3 Area Boxes (full image with min/max/avg)
Delta T	Yes	Yes	Yes
Data Communication Interface	USB-mini, USB-A, Composite Video, Bluetooth, Wi-Fi	USB-mini, USB-A, Composite Video, Bluetooth, Wi-Fi	USB-mini, USB-A, Composite Video, Bluetooth, Wi-Fi
COMMON FEATURES			
Frame Rate	60Hz		
Field of view / Focus	25° x 19° / Manual (Minimum focus distance 1.3ft/0.4m)		
Spectral range	7.5 to 13µm		
Display	Built-in 3.5" color LCD		
Image modes	Thermal, visual, MSX, and image gallery		
Image Storage	>1000 radiometric JPEG images (SD card memory)		
Laser Classification/Type	Class 2/Semiconductor AlGaInP Diode Laser: 1mW/635nm (red)		
Set-up controls	Mode selector, color palettes, configure image info, units, language, date and time formats, and image gallery		
Measurement modes	Auto hot/cold spot, Isotherm (above/below/interval)		
Measurement Correction	Reflected ambient temperature & emissivity correction		
Battery Type/Operating Time	Li-Ion/ >4 hours, Display shows battery status		
Charging system	In camera AC adapter/2 bay charging system		
Shock/Vibration/Drop / Encapsulation; Safety	25G, IEC 60068-2-29/ 2G, IEC 60068-2-6/ Drop-proof 2m (6.6ft) IP54; EN/UL/CSA/PSE 60950-1		
Dimensions/Weight	9.7x3.8x7.2" (246x97x184mm)/<1.82lbs (825g), including battery		

Ordering Information

49001-2001	FLIR E40 Thermal Imaging Infrared Camera (160x120)
49001-2001-KIT	FLIR E40 with PRO Software Bundle
49001-2101	FLIR E50 Thermal Imaging Infrared Camera (240x180)
49001-2101-KIT	FLIR E50 with PRO Software Bundle
49001-0602	FLIR E60 Thermal Imaging Infrared Camera (320x240)
49001-0602-KIT	FLIR E60 with PRO Software Bundle

ACCESSORIES

T197752	Li-Ion Rechargeable Battery
T910814	AC Adapter Charger (110-240V, U.S. Plug)
1910490	Cigarette Lighter Adapter Kit, 12VDC (1.2m cable)
T198125	2-Bay Battery Charger including Power Supply (multi plugs)
T197771	Bluetooth® Headset
T197717	FLIR Reporter Professional Analysis Software
1196961	15° Telephoto Lens
1196960	45° Wide Angle Lens
T197926	Tripod adapter
T127100	Sunshield
T911087	Pouch

Camera Kits with PRO Software Bundle

Increase the power of the camera data by adding a powerful software for creating compelling and professional, fully customized, easy-to-interpret maintenance reports.

Professional Report Wizard guides you step-by-step instructions combining all IR inspection data - infrared and visual images, temperature measurements, and text notes - into a professional, easy-to-interpret maintenance report.



10-Year Detector Protection
5-Year Battery
2-Year Parts & Labor

