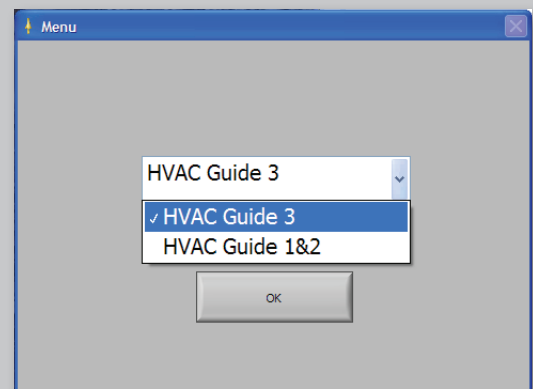


Installation

1. Insert CD or download software from www.fieldpiece.com/downloads.
If downloading software from our website; follow the latest installation instructions found on our website.
2. Click button next to **Install PC Software for Windows 7, VISTA, Windows XP** to launch installation.
3. **Allow** *OS_Detect* access to your computer. *This program detects your OS version in order to install the correct version of our PC software.*
4. **Allow** "setup.exe" to make changes to your computer in order to continue on the installation process.
5. Select the destination folder and click **Next**.
6. Review license agreement.
7. Click **I accept the license agreement(s)** then click **Next** to to accept the license agreement.
8. Click **Next** to start the installation.
9. Click **Finish** to finish the installation.
10. Click **Restart** to restart your computer and complete the installation process.

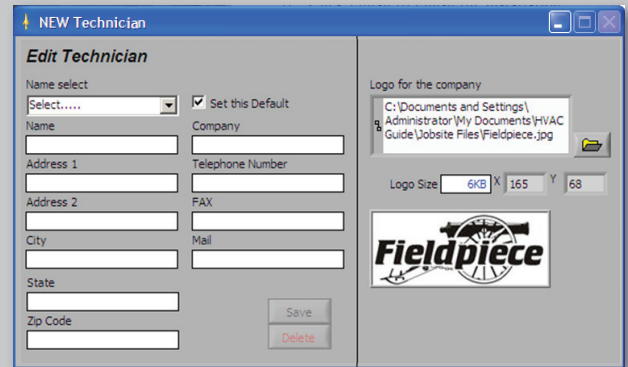
Connect HG3 to PC

1. Connect the USB cable to your PC then connect the Mini-USB end to your HG3.
2. Switch HG3 to the **Setup** switch position.
3. Ensure **Com with PC** on the HG3 display is highlighted and press **Enter**.
4. On your computer launch the PC Software.
5. Select **HVAC Guide 3** (Model HG3), and press **OK**.



Edit Technician

1. First time users must have one technician saved and selected to continue. If a technician(s) has already been saved, click the drop down menu under **Name Select** and select a technician to continue.
2. Fill out the Edit Technician screen (at least one line must be filled out for each technician).
3. Press **Save** to save technician.
4. Check **Set this Default** box to select this technician automatically upon start-up.

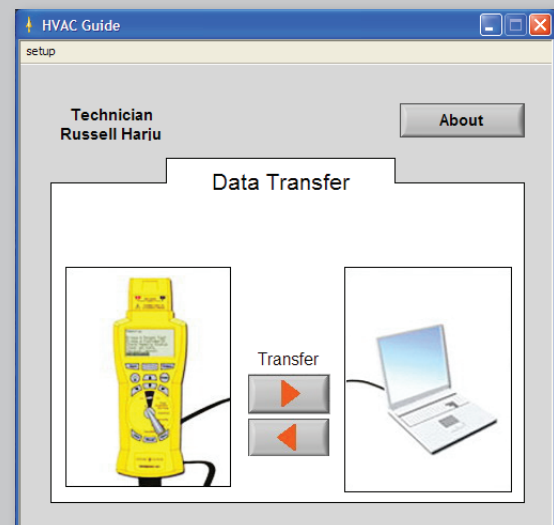


Change Logo

1. Save the logo you want printed on your test printouts in the file location shown under **Logo for the Company**. The logo file must be a .jpg 200w x 100h pixels or less.
2. Click the **Folder** button to browse.
3. Select file for the logo you want and click **OK**.

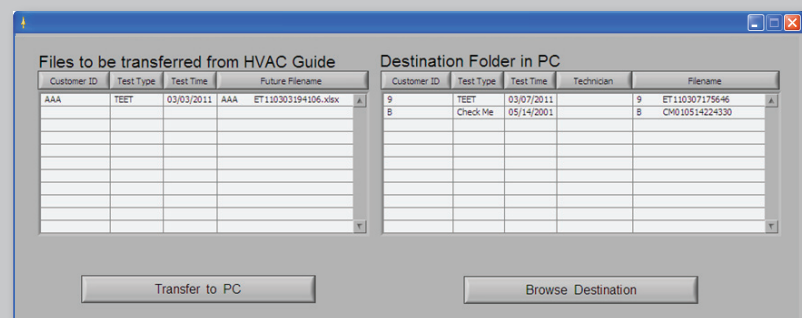
Data Transfer

1. The technician that will be printed on the form is displayed in the upper left corner. To select a different technician, click **setup** then **Edit Technician** to return to the Edit Technician screen.
2. To transfer data from the HG3 to the PC press the **top red arrow** button pointing right.



Data Transfer Screen

1. Select file(s) you want to transfer.
2. To select multiple consecutive files, hold the Shift key to select. To select multiple non-consecutive tests, hold the Ctrl key to select.
3. Once tests are selected click **Transfer to PC**.



Printout

1. Print the .xls file from your spreadsheet program.
Example shown below.



Jobsite:
Mrs. Jones
123 Elm Street

ABC City, CA 92834

Technician:
Russell Harju
Fieldpiece Instruments
1900 East Wright Cir.

Anaheim, CA 92806
fppm2@fieldpiece.com

The Fieldpiece HVAC Guide was used to perform an analysis of your system.
The tests and results are reported below:

Customer ID:	ABC___123
Superheat Analysis	
Date Performed:	2011/03/02
Time Performed:	13:47:43
SHTable:	Standard
Refrigerant Type:	R-22
Return Wet Bulb:	65 °F
Outdoor Dry Bulb:	90 °F
Target Superheat:	10.9 °F
Suction Line Pressure:	60 psig
Suction Line Temperature:	40 °F
Vapor Saturation Temp:	33.9 °F
Actual Superheat:	6.1 °F

Actual Superheat is close to the Target Superheat which indicates adequate refrigerant charge for a fixed restrictor using a standard superheat table.
Test the airflow of the system with the Target Evaporator Exit Temp test to ensure that the evaporator airflow is correct.

See Sec.2.1, 2.2, 2.3



Russell Harju
Phone 714 634 1844

1900 East Wright Cir.

Fax ###

Anaheim, CA 92806