



205 Westwood Ave
Long Branch, NJ 07740
1-877-742-TEST (8378)
Fax: (732) 222-7088
salesteam@Tequipment.NET

FLIR b60

NEW!

Thermal Imaging InfraRed Camera

Fusion (PIP) Feature for Non-invasive monitoring and diagnosing of building conditions



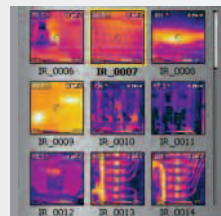
Fusion - Picture in Picture



Built-in Laser Pointer



Built-in Illuminator Lights

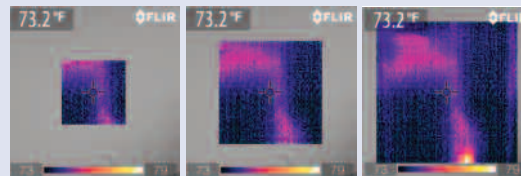


Thumbnail Image Gallery



FLIR b60 Features

- *Latest Infrared Detector Technology*
- *Fusion Picture in Picture (PIP)*
- *Bright LED Lamps for Quality Visible Images*
- *Thermal Sensitivity of $<0.1^{\circ}\text{C}$ @ 25°C*
- **Instant imaging** — Captures entire room to reveal wet conditions behind surfaces, such as enameled walls and wallpaper and even in places where moisture meters can't reach
- **Insulation Alarm** — Easily detects areas that don't fulfill the insulation requirements
- **Dew Point Alarm** — displays areas with risk of surface condensation where mold growth could occur
- **Visible Light Digital Camera** — 2.3MP resolution with LED lamps provides sharp images regardless of lighting conditions
- **Infrared Thermal Resolution** — High resolution of 32,400 pixels (180 x 180)
- **Scalable Fusion Picture in Picture (PIP)** — Displays thermal image super-imposed over a digital image and is scalable to resize the thermal image
- **Auto Hot/Cold Spot Marker** — Shows a spot within the area that automatically finds the hottest or coldest spot within the box
- **0.08°C Thermal Sensitivity** — Provides high resolution needed to find problems faster and easier
- **Optimized Temperature Range** — Measures from -4 to 248°F (-20 to 120°C) targeting building applications
- **Thumbnail Image Gallery** — Allows quick search of stored images
- **Laser LocatIR™ Pointer** — Pinpoints the hot spot on the IR image with the real physical target
- **Laser Marker** — Marks the point on the IR displayed image as to where the Laser pointer is targeting
- **Lightweight** — Weighs only 1.3lbs
- **Easy One-handed Operation**
- **3.5" LCD with Razor Sharp Resolution**
- **Convenient Thumbnail Image Gallery**
- **Radiometric JPEG Images** — Patented technology used to save images in standard JPEG format for easy e-mailing and analysis using QuickReport™ PC Software (included)
- **1GB microSD Card** — Stores more than 1000 Radiometric JPEG images
- **Li-Ion Rechargeable Battery** — Replaceable battery lasts for 5hrs of continuous use
- **Area (Min/Max) Mode** — Spot marker shows the Minimum or the Maximum Temperature reading within the selected area
- **Includes** — 1GB micro SD Card, miniSD adaptor, Li-Ion rechargeable battery, power supply, QuickReport™ software, USB cable, lens cap, hand strap, and heavy duty case



Scalable Picture-in-Picture Fusion

Allows for easier identification and interpretation of infrared images. This advanced technology enhances the value of an infrared image by allowing you to overlay it directly over the corresponding visible image. This functionality combines the benefits of both the infrared image and visual picture at the push of a button. The scalability feature permits you to resize the thermal image as needed on a large 3.5" color display.



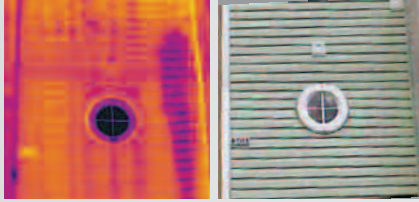
Dew Point Alarm

Displays building areas where surface condensation is present which shows a potential for mold growth

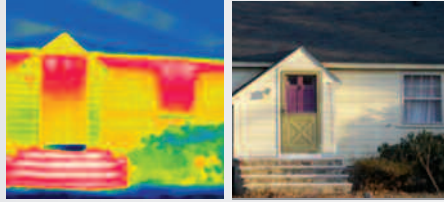
Insulation Alarm

Identifies insufficient insulation in building areas where insulation requirements are not met.

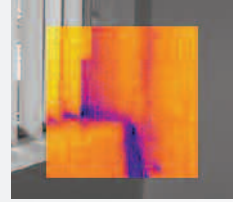
Applications



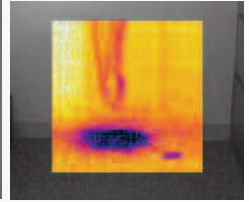
Moisture and Water Leak: Shows the path of a serious leak, completely hidden within the wall where mold growth may occur.



Building Inspection: For inspecting structural differences in homes or commercial buildings



FUSION PIP Image of Heating and Cooling: Identifies faulty building insulation where heat loss or AC cooling is present



FUSION PIP Image of Water Leak: Hidden water leak from poorly sealed window appears on wall and carpet



The Difference is Training
Insurance companies, restoration firms, building owners, and thermographers already involved in building maintenance and operations require a thorough applications training curriculum leading to certification in infrared building science. In response, the Infrared Training Center (ITC) and the Building Science Institute (BSI) have developed a course for those wishing to receive Building Science Certification. These courses address the Best Practices of the cleaning and restoration industry with content drawn from extensive field experience in thermography and building construction. They include references to actual cases illustrating how IR thermography has pinpointed sources of building moisture, provided definitive Cause and Origin data, enabled energy savings, and prevented incipient catastrophes. The Building Science series emphasizes practical real-world skill building, and includes infrared theory relevant to these skills.

FLIR b60 Specifications

Features	
Temperature range	-4°F to 248°F (-20°C to 120°C)
Temperature accuracy	±2°C or ±2% of reading
Image Storage (1GB micro SD card)	1000 Images
Emissivity Table	0.1 to 1.0 (adjustable)
Imaging Performance / Image Presentation	
Field of view/min focus distance	25° X 25°/0.10m (3.9")
Thermal sensitivity (N.E.T.D)	<0.08°C at 25°C
Detector Type - Focal plane array (FPA) uncooled microbolometer	32,400 pixels (180 x 180)
Spectral range	7.5 to 13µm
Display	3.5" color LCD
Video output	MPEG-4 via USB
Image Modes	Thermal, Visual, Fusion
Fusion Picture in Picture (PIP)	Scalable
Visible Light Camera Resolution	2.3 Megapixels
Laser / Classification	Yes / Class 2
Laser Type	Semiconductor AlGaInP; Diode Laser: 1mW/635nm
Laser Marker Function	On Infrared image
Spot (center) Measurement mode	Yes
Auto Hot/Cold Spot Marker	Yes
Area (min/max) Measurement mode	Yes
Image Controls	Palettes (Iron, Rainbow, and Black/White), level, span, auto adjust (continuous/manual)
Focus	Manual
Set-up controls	Date/time, info, LCD intensity, power down, and 21 languages
Battery Type/operating time	Li-Ion/ 5 hours, Display shows battery status
Dimensions/Weight	9.3x3.2x6.9" (235x81x175mm)/<1.32lbs (600g), including battery

Ordering Information



Part Number	Product Description	Price
-------------	---------------------	-------

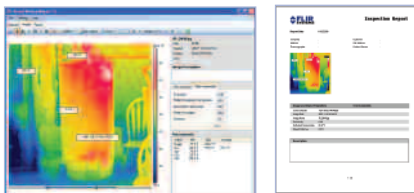
FLIR b60 Thermal Imaging InfraRed Camera with Laser and scalable PIP

ACCESSORIES

1196398 Li-Ion Rechargeable Battery
1910399 AC Adapter Charger (110-240V, U.S. Plug)
1910490 Cigarette Lighter Adapter Kit, 12VDC (1.2m cable)
1196474 2-Bay Battery Charger including Power Supply (U.S. plug)
1122000 Camera Pouch Case

CERTIFICATION TRAINING

3300149 Certification in Infrared Building Science per attendee (3.5 Day Class)



QuickReport™ PC software enables user to analyze Temperature of all thermal pixels of any FLIR Camera JPEG images

Tel: 1.800.464.6372

CANADA: 1.800.613.0507

www.goinfrared.com

Specifications and prices subject to change without notice. Rev. 9/02/08-R1

