

Manual Supplement

Manual Title:	1550C/1555 Users	Supplement Issue:	2
Part Number:	3593019	Issue Date:	10/10
Print Date:	April 2010	Page Count:	3
Revision/Date:			

This supplement contains information necessary to ensure the accuracy of the above manual.




205 Westwood Ave
Long Branch, NJ 07740
1-877-742-TEST (8378)
Fax: (732) 222-7088
salesteam@Tequipment.NET

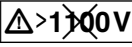
Change #1, 55569

On page 5, change:

From:

	Do not use in distribution systems with voltages higher than 1100 V.
---	--

To:

	Do not use in distribution systems with voltages higher than 1100 V.
---	--

On page 30, change:

From:

Certifications	CE   
-----------------------	--

To:

Certifications	CE    
-----------------------	--

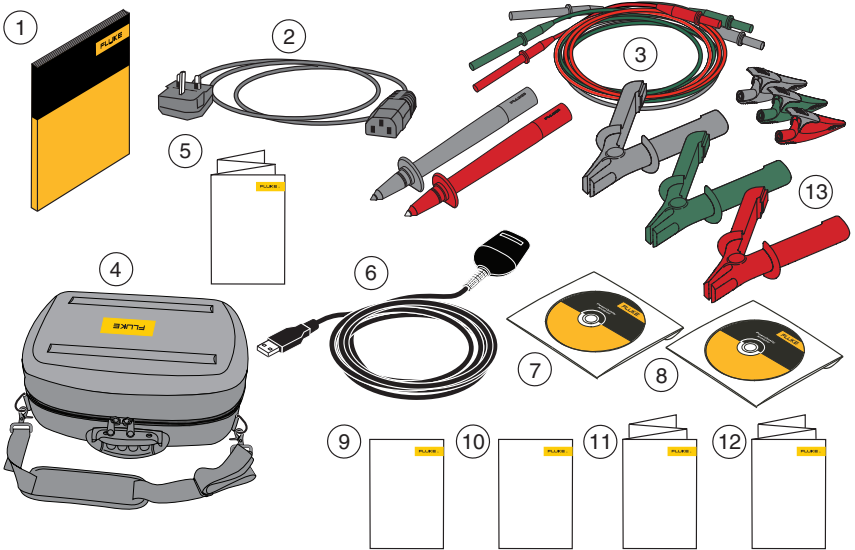
Under ***Electrical Specifications*** replace the Table with the following:

Insulation		
Test Voltage (DC)	Insulation Resistance Range	Accuracy (\pm reading)
250 V	< 250 k Ω	unspecified
	250 k Ω to 5 G Ω	5 %
	5 G Ω to 50 G Ω	20 %
	> 50 G Ω	unspecified
500 V	< 500 k Ω	unspecified
	500 k Ω to 10 G Ω	5 %
	10 G Ω to 100 G Ω	20 %
	> 100 G Ω	unspecified

1000 V	< 1 MΩ 1 MΩ to 20 GΩ 20 GΩ to 200 GΩ > 200 GΩ	Unspecified 5 % 20 % unspecified
2500 V	< 2.5 MΩ 2.5 MΩ to 50 GΩ 50 GΩ to 500 GΩ > 500 GΩ	unspecified 5 % 20 % unspecified
5000 V	< 5 MΩ 5 MΩ to 100 GΩ 100 GΩ to 1 TΩ > 1 TΩ	unspecified 5 % 20 % unspecified
10,000 V	< 10 MΩ 10 MΩ to 200 GΩ 200 GΩ to 2 TΩ > 2 TΩ	unspecified 5 % 20 % unspecified
Bar graph range:		0 to 2 TΩ
Insulation test voltage accuracy:		-0 %, +10 % at 1 mA load current
Induced ac mains current rejection:		2 mA maximum
Charging rate for capacitive load:		5 seconds per μF
Discharge rate for capacitive load:		1.5 s/μF

Change #2

On page 6, replace Figure 1, with the following:



Replace Item 4 and add Item 13:

④	Soft Carrying Case (Kit includes Hard Case)
⑬	Heavy Duty Alligator Clips (Red, Black, Green) (1555 and Kits only).



205 Westwood Ave
Long Branch, NJ 07740
1-877-742-TEST (8378)
Fax: (732) 222-7088
salesteam@Equipment.NET