

# The New Fluke 233 Digital Multimeter *Imagine the possibilities.*

FLUKE®



The first Fluke digital multimeter with detachable display is here.

And here...



New



Equipment  
.NET



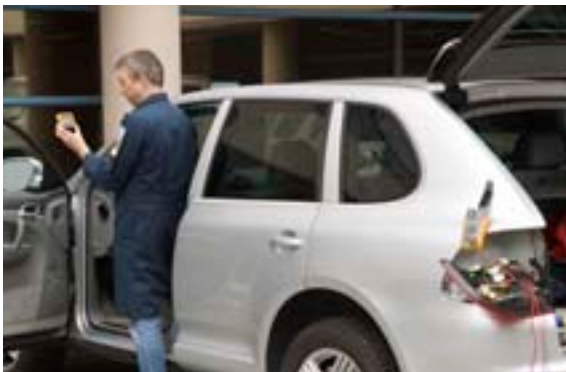
205 Westwood Ave  
Long Branch, NJ 07740  
1-877-742-TEST (8378)  
Fax: (732) 222-7088  
salesteam@Equipment.NET

## Be in two places at once with the Fluke 233 Remote Display Multimeter.

The NEW Fluke 233 wireless remote display digital multimeter with removable magnetic display allows you to be 30 feet away from the measurement point. For more information about the revolutionary new Fluke 233 Remote Display Multimeter and to see how it will expand your capabilities go to [www.fluke.com/remote\\_display\\_meter](http://www.fluke.com/remote_display_meter) or call **1-800-44-Fluke**.

**The NEW Fluke 233 True-rms Remote Display Digital Multimeter allows you to be in two places at once.**

- Removable display gives the user flexibility in situations where display viewing is difficult or impossible
- Place the display where you can see it
- Removes the dilemma of trying to take measurements in hard-to-reach places, or making measurements in machines or panels that are physically separated from a limit or isolator switch
- Can be used in areas where the operator can't be close to the active measurement point, like clean rooms or hazardous areas
- True-rms ac voltage and current for accurate measurements on non-linear signals
- Measure up to 1000 V ac and dc
- Measure up to 10 A (20 A for 30 seconds)
- 10,000  $\mu$ F capacitance range
- Frequency to 50 kHz
- Built in thermometer conveniently allows you to take temperature readings without having to carry a separate instrument
- Resistance, continuity and diode test



**Features**

- Low power wireless technology allows the display to be carried up to 10 meters (33 ft) away from the point of measurement for added flexibility
- No interference with measurements
- The removable magnetic display can be conveniently mounted where it is easily seen
- Make measurements without holding the meter to improve visual focus on probes and improve safety of electrical measurements
- Use as a conventional multimeter when the display is connected
- Radio transmitter automatically turns off when the display is connected to the meter
- Auto power off maximizes battery life
- Min/Max and Average recording to capture variations automatically
- Test continuity and diodes
- Easy to read display with large digits and bright backlight
- Battery life approximately 400 hours

