

FLUKE®

**Introducing the NEW
Fluke 421D Laser
Distance Meter**

Tequipment
.NET



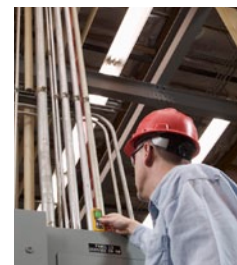
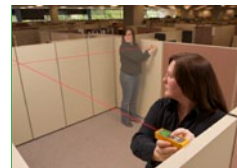
205 Westwood Ave
Long Branch, NJ 07740
1-877-742-TEST (8378)
Fax: (732) 222-7088
salesteam@Tequipment.NET

FLUKE®

Fluke Corporation
PO Box 9090,
Everett, WA 98206-9090
USA

First Name Last name
address
city, state zip

**Go farther with the
New Fluke 421D**



With new advanced features, Fluke laser distance meters take you farther

Take your sales farther with the addition of the new Fluke 421D. With greater distance and advanced features, this new high-performance professional grade laser distance meter fills out the Fluke distance laser meter family, giving you a new powerful measuring tool to offer the professional who needs more.

- Customers who need a high-performance laser distance meter will be more likely to purchase a Fluke; a brand synonymous with quality and rugged reliability
- The 421D measures up to 100 m (330 ft) filling the need of users who need to measure greater distances
- Advanced features provide a solution for users who need a higher end tool

Tools and support to help you sell

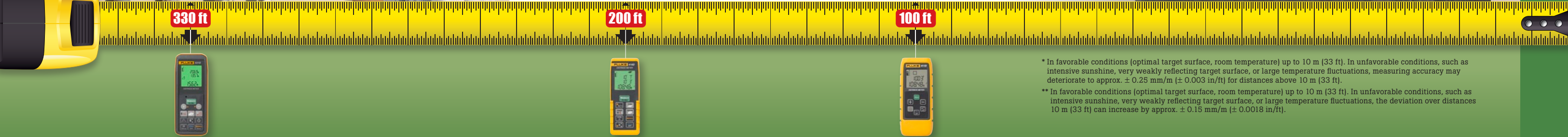
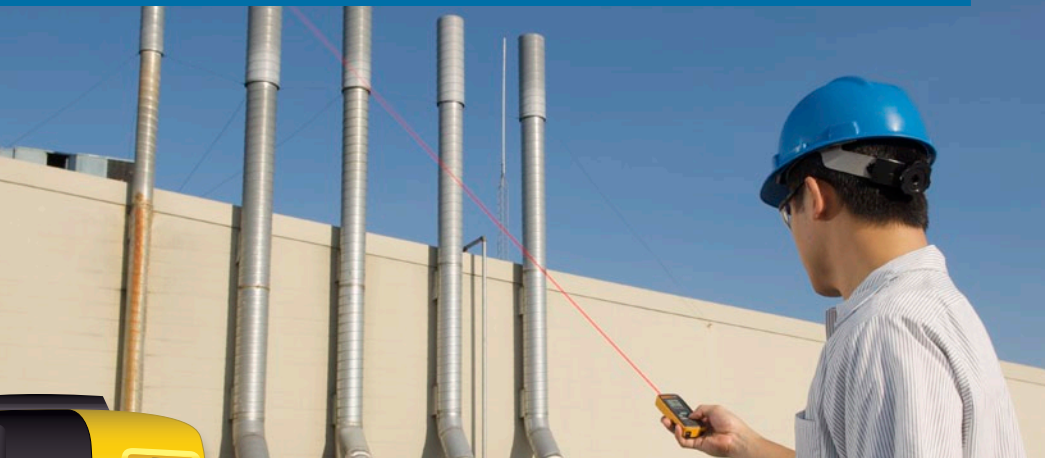
- Print and e-media ad campaign running in major publications generating over 60,000 impressions
- Email campaign
- Web advertising delivering more than 100,000 impressions monthly
- Fluke News advertising with a circulation of 140,000
- Fluke Plus loyalty program with more than 20,000 members

Fluke laser distance meter features at a glance

New



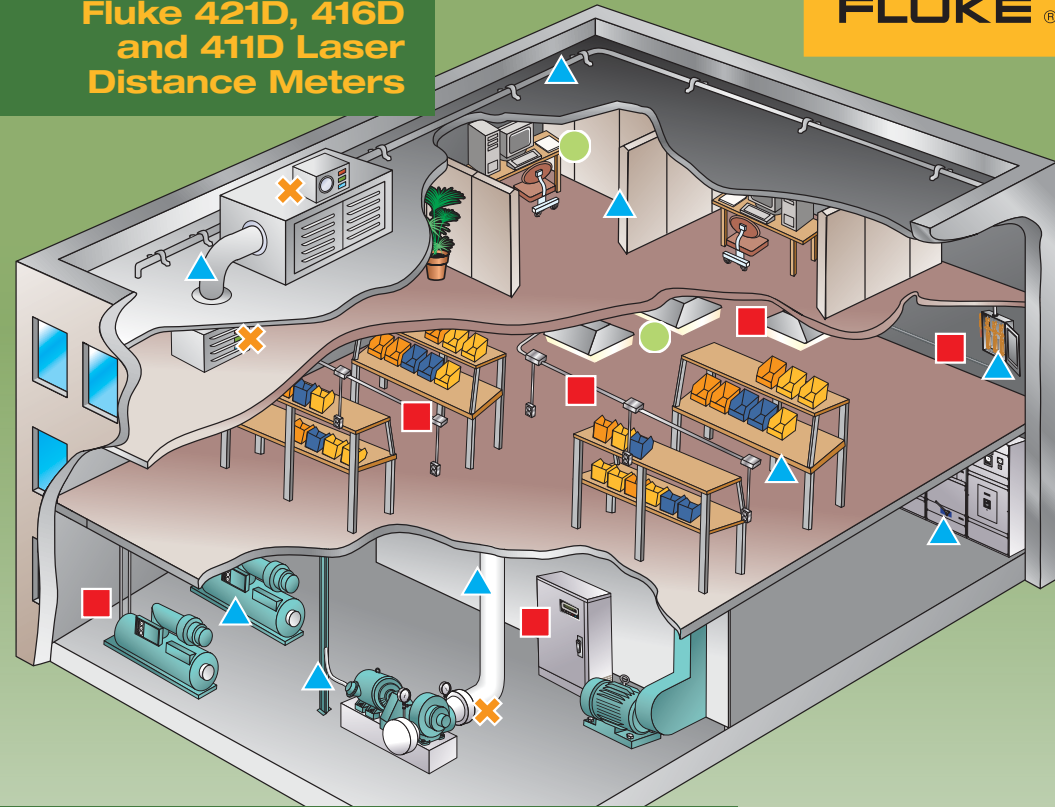
	Fluke 421D	Fluke 416D	Fluke 411D
Range*	0.05 m to 100 m (0.16 ft to 330 ft)	0.05 m to 60 m (0.16 ft to 200 ft)	0.1 m to 30 m (0.33 ft to 100 ft)
Measuring accuracy**	± 1.5 mm (± 0.059 in)	± 1.5 mm (± 0.059 in)	± 3 mm (0.118 in)
Addition/subtraction	●	●	●
Pythagoras (Indirect measurement)	Full	Full	Simple
Room angle and stakeout	●	—	—
±45 ° Tilt sensor/indirect measure	●	—	—
Ingress protection	IP54	IP54	IP40
Battery life	up to 5,000 measurements	up to 5,000 measurements	up to 3,000 measurements



* In favorable conditions (optimal target surface, room temperature) up to 10 m (33 ft). In unfavorable conditions, such as intensive sunshine, very weakly reflecting target surface, or large temperature fluctuations, measuring accuracy may deteriorate to approx. ± 0.25 mm/m (± 0.003 in/ft) for distances above 10 m (33 ft).

** In favorable conditions (optimal target surface, room temperature) up to 10 m (33 ft). In unfavorable conditions, such as intensive sunshine, very weakly reflecting target surface, or large temperature fluctuations, the deviation over distances 10 m (33 ft) can increase by approx. ± 0.15 mm/m (± 0.0018 in/ft).

Fluke 421D, 416D and 411D Laser Distance Meters



The Fluke professional laser distance meters can be used in multiple applications . . .

- **Electrical**
 - Conduit lengths
 - Wire lengths
 - Power drop spacing
 - Lighting spacing and locations
 - Equipment power box locations
- ▲ **Plant Management (Industrial)**
 - Equipment layout
 - Piping/exhausts/ventilation
 - Equipment installation
 - Conduit layout and installation

- ✕ **HVAC**
 - Air ventilation and ducting
 - Equipment position
 - Air volume calculations
 - Hot/Cold water piping
 - Wire length
 - Duct sizing
- **Tenant Space**
 - Space layout
 - Lighting spacing
 - Floor plan layout
 - Network room layout

For more information or to download an application note on the 101 uses for laser distance meters, go to www.fluke.com/101uses

Get the information you need to market these products instantly from the Partner Portal

The Partner Portal is a great way to access information about Fluke products and download digital files including: Product Data Sheets, Application Notes, Press Releases, Photos, and Catalog Copy.

If you have not already registered for access to the Fluke Partner Portal, please go to <https://support.fluke.com> and select Partner Portal:Fluke Industrial Tools from the pull down menu, then click register. Complete the registration form and submit it. Your submittal will be approved within 48 hours, at which time you will receive a confirming e-mail with a reminder of the user name and password you selected. Only Fluke distributors and sales staff, not end-user customers, may access the Fluke Partner Portal.



Product ordering information

To order Fluke products, please fax purchase orders to 425-446-5844. Call 1-800-752-5717 for questions on orders. Order status inquiry is available on the Fluke Partner Portal.

Model #	Part #	Description	Single product package dimensions			Weight	Country of origin	UPC code	U.S. list price
			H	W	D				
Fluke-421D	3480795	Laser Distance Meter, 100 Meter	27.31 cm (10.75 in)	17.15 cm (6.75 in)	5.72 cm (2.25 in)	295 g (4.40 oz)	Austria	0 95969 50051 7	\$369.00
Fluke-416D	3326423	Laser Distance Meter, 60 Meter	27.31 cm (10.75 in)	17.15 cm (6.75 in)	5.72 cm (2.25 in)	264.6 g (9.33 oz)	Hungary	0 95969 46739 1	\$229.00
Fluke-411D	3326414	Laser Distance Meter, 30 Meter	27.31 cm (10.75 in)	17.15 cm (6.75 in)	5.72 cm (2.25 in)	265.2 g (9.35 oz)	Hungary	0 95969 46738 4	\$109.00



Fluke. Keeping your world up and running.®

Fluke Corporation
PO Box 9090,
Everett, WA 98206 U.S.A.

Fluke Europe B.V.
PO Box 1186, 5602 BD
Eindhoven, The Netherlands

For more information call:
In the U.S.A. (800) 443-5853 or Fax (425) 446-5116
In Europe/M-East/Africa +31 (0) 40 2675 200 or Fax +31 (0) 40 2675 222
In Canada (800)-36-FLUKE or Fax (905) 890-6866
From other countries +1 (425) 446-5500 or Fax +1 (425) 446-5116
Web access: <http://www.fluke.com>

©2009 Fluke Corporation. Specifications subject to change without notice.
Printed in U.S.A. 10/2009 3539580A B-EN-N

Modification of this document is not permitted without written permission from Fluke Corporation.