



**FLUKE**®

# DPCTrack2™

Calibration Management Software

Getting Started

August 2011

© 2011 Fluke Corporation. All rights reserved. All product names are trademarks of their respective companies.

## License Agreement

This software and accompanying documentation are protected by United States copyright law and also International Treaty provisions. Any use of this software in violation of copyright law or the terms of this agreement will be prosecuted fully.

DPCTrack2 is copyright © 2011 by the Fluke Corporation, all rights reserved.

Fluke authorizes you to make archival copies of this software for the sole purpose of backing up and protecting your investment from loss. Under no circumstances may you copy this software or documentation for the purposes of distribution to others. Under no conditions may you remove the copyright notices made part of the software documentation.

Fluke warrants that the software will function as described in this document or in the online help for a period of 60 days from receipt. If you encounter a bug or deficiency, we will require a problem report detailed enough to allow us to find and fix the problem. If you properly notify us of such a software problem within the warranty period, Fluke will update the defective software at no cost to you.

**Fluke assumes no liability for the use of DPCTrack2 beyond the original purchase price of the software. In no event will Fluke be liable to you for additional damages, including any lost profits, lost savings, or other incidental or consequential damages arising out of the use of or inability to use these programs, even if Fluke has been advised of the possibility of such damages.**

By using this software you agree to the terms of this section. If you do not agree, you should immediately return the entire DPCTrack2 package.

All Fluke product names are trademarks or registered trademarks of the Fluke Corporation. Other brand and product names are trademarks or registered trademarks of their respective holders.

# Table of Contents

Title	Page
Introduction .....	1
DPCTrack2 Improvements .....	1
New Features .....	2
Hardware Requirements .....	3
Installation Instructions .....	3
Register Trial .....	3
Removal Instructions .....	5
Software Updates .....	5
A Brief Tour .....	5
Logging In .....	5
Navigating the Home Screen .....	6
Uploading and Downloading .....	9
Download Tab .....	10
Upload Tab .....	11
Options Tab .....	12
Reports .....	13
Software Support .....	13



## **Introduction**

DPCTrack2 Calibration Management Software (the Software) provides users with an easy-to-use and effective method of managing instrument calibration and maintenance by utilizing the industry's most advanced calibration equipment and software.

Create, update, and manage records for a variety of item types, including Instruments, Loops, Equipment, Test Instruments, and Calibrations.

## **DPCTrack2 Improvements**

The Software gives you an easy-to-use method of creating and maintaining an instrument maintenance database by working with Fluke's 74x and 75x Documenting Process Calibrators.

The software lets technicians:

1. Enter device information (Tag IDs/Instruments, Test Instruments, Loops, Equipment, and Calibration Specifications) into the database. Tag IDs and Calibration Specifications can also be imported from text files.
2. Load the Fluke calibrator with Tag ID tests (Calibration Specifications) from the database.
3. Perform standard tests loaded to the calibrator.
4. Save test results and logged data from calibrator to DPCTrack2 database.
5. Upload test results from the calibrator directly to the database.
6. View the test results on screen.
7. Print standard reports based upon individual test results.
8. Download prompts to populate on device either before or after performing tests that will automatically be added to the created calibration records, including Calibration Type, Certificate #, Man Hours, and more.

## **DPCTrack2**

### *Getting Started*

---

#### **New Features**

**Improved user interface-** The improved user interface allows for easy navigation with multi-window functionality. After logging in, explore the improved graphical user interface. This manual also explains some of the new features that enhance usability and productivity. For more information, please see the DPCTrack2 User Manual located on the CD-ROM.

**Improved Multi-COM port support-** Communicate with your Fluke Documenting Process Calibrators (DPCs) easily and without configuration file changes through USB or RS232 Serial ports.

**Drywell source mode support-** The Software now supports calibrations performed with Drywell test standards.

**Reminders Screen-** Use automatically-generated reminders to stay informed on all work items needing attention including Calibrations Awaiting Finalization, Calibrations Due, Records Awaiting Approval, and more.

**DPCTrack Explorer-** Use this feature to easily navigate through all of the Software's item records and view calibrations that are coming due.

**User Defined Labels and Variables-** The Software features an unprecedented level of customization ability with the ability to redefine most field names and create user-defined variables to ensure the Software functions as necessary.

**Keep on Schedule and End of Month scheduling-** These scheduling features give a greater degree of control when rolling calibration frequencies.

**More Reports-** Powered by Crystal Reports 11, DPCTrack2's reporting system contains over 40 standard loaded reports that can be printed or exported to multiple file formats.

**Equipment/Loops-** Track asset configurations with Loops and Equipment, allowing associated items to be managed as a group or individually.

**Advanced Query Capability-** Powerful query capabilities allow advanced searches to easily locate desired records.

**Set Required Fields-** Define what fields must be completed when entering new records.

**Multiple Test Point ranges-** Multiple Test Point groups allow for advanced calibration procedures with an easy to use interface.

## **Hardware Requirements**

- Pentium class 667 MHz or higher processor
- Minimum of 256 MB of RAM (512 MB or more recommended)
- Windows XP (or later) operating system
- At least 500 MB of free hard disk space

For calibrator communication:

- USB 1.1 or higher
- RS232 Serial Port required

## **Installation Instructions**

### **Named Machine License**

Insert the Software CD-ROM into your computer's CD-ROM drive. If the program does not autostart, Run "setup.exe". Follow the prompts on your screen to complete installation.

#### *Note*

*For successful installation, you must completely run through the initialization utility.*

## **Register Trial or Activate Program**

Upon installing the program, the user has two options depending on the License status of their program. From the Help menu on the top tool bar, the options for Register Trial and Activate Program can be seen. These options will remain until the user either registers their trial version or activates to the full version of DPCTrack2.

### **Register Trial**

You are given a 60 day trial before needing to upgrade the license to the full version of the program. The trial version features the same functionality of the full version. Users are notified how many days remain in their trial at intervals of 60, 45, 30, 14, 7, 6, 5, 4, 3, 2 and 1 day(s). Each warning also includes the option to register the trial or purchase the full version of the program. If the trial period expires, the Software's functionality will be limited to only the Upload, Download, and View the Logs features. Following the expiration of the 60 day trial, users will also retain Read Only access to existing records in addition to retaining the ability to upload Logged Data. See Figure 1.

## DPCTrack2 Getting Started

The screenshot shows a dialog box titled "DPCTrack 2.0 Licensing" with a blue background and a yellow "FLUKE." logo in the top right corner. The form contains the following fields from top to bottom: "Company Name" (with a text input field), "First Name" (with a text input field), "Last Name" (with a text input field), "Contact Email" (with a text input field), and "Contact Phone" (with a text input field). At the bottom of the dialog, there are three buttons: "Back" (with a left-pointing arrow), "Submit", and "Cancel" (with a red 'X' icon).

Figure 1.

You will be able to activate a full License after obtaining a Proof of Purchase Number (POP#). POP#s are provided within the original packaging that contains the program disks, or after a customer selects to “Activate Program” in the Trial version of the Software. Activation is similar to Registration, but involves additional user information used to identify the machine using the Software License. See Figure 2.

The screenshot shows a dialog box titled "DPCTrack 2.0 Licensing" with a blue background and a yellow "FLUKE." logo in the top right corner. The form contains the following fields from top to bottom: "POP Number" (with a text input field), "Company Name" (with a text input field), "First Name" (with a text input field), "Last Name" (with a text input field), "Contact Email" (with a text input field), and "Contact Phone" (with a text input field). At the bottom of the dialog, there are two buttons: "Back" (with a left-pointing arrow) and "Submit".

Figure 2.



### **Removal Instructions**

The Software can be safely removed from your PC by following a few simple steps. Navigate to your system's *Control Panel*, and select *Add or Remove Programs* (for Windows XP users), or the *Programs and Features* (for Windows 7 users). Select *Fluke DPCTrack2* from the list, and select *Uninstall Program*.

### **Software Updates**

After Software installation and launch, go to the help menu and check for updates. The program will tell you what to do if it finds that updates are necessary.

### **A Brief Tour**

#### **Logging In**

To quickly and securely login to the Software, click the Fluke DPCTrack2 icon in your *Start* menu. When the *login* screen appears, enter your secure username and password (default: admin/admin for new users). Upon entering the correct information, the user is brought to the program's Home Screen.

#### *Note*

*DPC/TRACK users see Section 20 of the User Manual for instructions to import data from DPC/TRACK.*

## DPCTrack2 Getting Started

### Navigating the Home Screen

From this screen, users are able to quickly and easily navigate throughout the system to set up, perform, and fulfill required tasks. For more information, see Chapter 3, Getting Started of the User Manual see-Section 3.7 Common Usage Scenario. See Figure 3.



Figure 3.

A simple and efficient interface allows you to use the most high-powered functionality in the industry.

From the Software's Home Screen, observe the programs main toolbar on the left side of the screen. The Company, Instruments, Loops, Equipment, Test Instruments, Calibrations, Documents, Upload/Download, and Logged Data buttons are visible.

**Company-** This button opens the *Company* screen. From here, you can modify the record for the Company. The company's general information, addresses, system options, and default reports are stored in this screen.

*Note*

*See Chapter 9 of the User Manual for more information about the Company screen.*

**Instruments-** This button opens the *Instruments* screen. Enter, update, and manage instrument records with this screen. You can enter general information describing the instrument (Manufacturer, Model Number, Serial Number, Status, etc.) as well as set the instrument's default calibration frequency,

This screen is also where you can define the instrument's unique calibration points and additional information (location, warranty information, responsible technician and vendors, etc.)

*Note*

*See Chapter 15 of the User Manual for more information about the Instruments screen.*

**Loops-** This button opens the *Master Loop Record* screen. Loops are used to manage a set of instruments that function together in a set process. Loops are used to manage the calibration of related instruments as one group, using one frequency. This allows for easier management of multiple instruments by performing a single calibration to satisfy the requirements of all instruments associated with the Loop.

The *Loops* screen functions similarly to the *Instruments* screen, and contains most of the same features and fields.

*Note*

*See Chapter 16 of the User Manual for more information about the Loops screen.*

**Equipment-** This button opens the *Equipment Record* screen. *Equipment* items are those that the user desires to include in the Software's database, but are not calibrated items (example: a control panel). Equipment records may contain Instrument and Loop records associated with the Equipment item (example: components composing the control panel).

The *Equipment* screen contains information similar to that found in the *Instruments* and *Loops* screens, but does not contain a *Frequency* or the *Calibration Points* tab. In addition, the *Instruments/Loops* tab is found, where users may view the Equipment Record's associated items.

## DPCTrack2

### Getting Started

---

#### Note

See Chapter 14 of the User Manual for more information about the Equipment screen.

**Test Instruments-** This button opens the *Test Instrument Record* screen. *Test Instrument* items that perform calibration events (example: Fluke 754 Documenting Process Calibrator). The screen appears similarly to the *Instrument* screen, but contains an additional section, *Use This Test Instrument When Calibrating the Following Instrument Types*, which allows the user to set the appropriate instrument types calibrated by the selected Test Instrument.

#### Note

See Chapter 17 of the User Manual for more information about the Test Instruments screen.

**Calibrations-** This button opens the *Calibration* screen. From this screen, create and manage records of calibration events for Instruments, Loops, and Test Instruments. The record is composed of general information describing the item being calibrated, the calibration's test results, test instruments used, SOPs, and other information.

#### Note

See Chapter 19 of the User Manual for more information about the Calibration screen.

**Documents-** This button opens the *Document Records* screen. From here, create records and link to files for many document types, including SOPs, User Manual

documents, instructions, and forms. The record contains detailed information describing the Document, space for appropriate signatures, and procedures.

#### Note

See Chapter 13 of the User Manual for more information about the Document Record screen.

**Upload/Download-** This button opens the *Upload/Download* screen. From this screen set, manage, and execute communication between the Software and its supported Fluke Calibrators. The screen contains three tabs, *Download*, *Upload*, and *Options*:

1. Use the *Download* tab to selectively download item information from the Software to the connected Fluke device.
2. Use the *Upload* tab to upload executed calibration results and information directly to the Software's database.
3. Use the *Options* tab to set and modify the program's default settings to personalize preferences and related functions.

#### Note

See Chapter 18 of the User Manual for more information about the Upload/Download screen.

**Logged Data-** This button opens the *Logged Data* screen. This screen is used to upload and manage Logged Data from the Fluke device to DPCTrack2. Logged data is recorded and examined non-calibration data.

*Note*

*See Chapter 24 of the User Manual for more information about the Logged Data screen.*

## **Uploading and Downloading**

The *Upload/Download* screen facilitates communication between the application's database and the Fluke Calibrator. The Software can manage all instrument calibration needs. Connect a Fluke Calibrator to a computer and easily transfer downloaded tasks and upload calibration results and logged data to a computer workstation.

If DPCTrack2 is unable to communicate with your 743b, 744, 753, or 754 Calibrator, check to make sure that the USB/RS232 Serial Port is connected to the designated port.

## DPCTrack2 Getting Started

### Download Tab

Use the *Download* tab, download item information directly into a Fluke calibrator. This information includes item details and calibration information stored in the item's master record. To initiate a download from the

*Upload/Download* screen, select the desired item(s) from the list, confirm the appropriate port is selected, and click the *Initiate Download* button in the bottom right corner. See Figure 4.

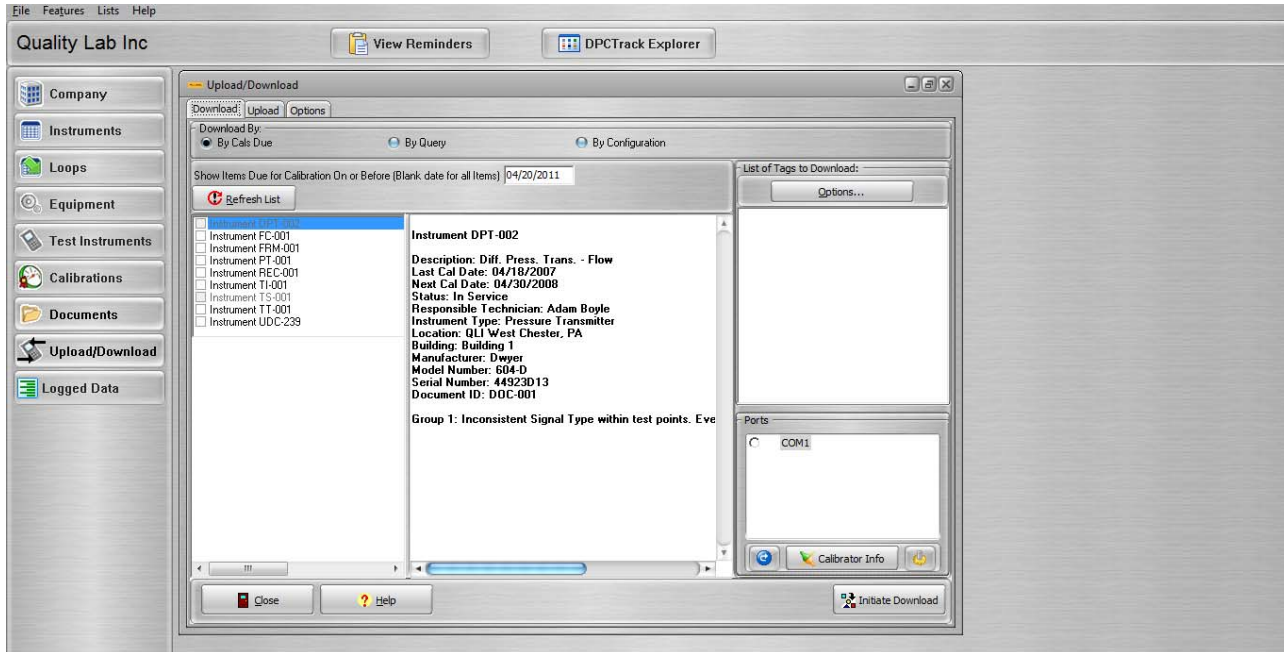
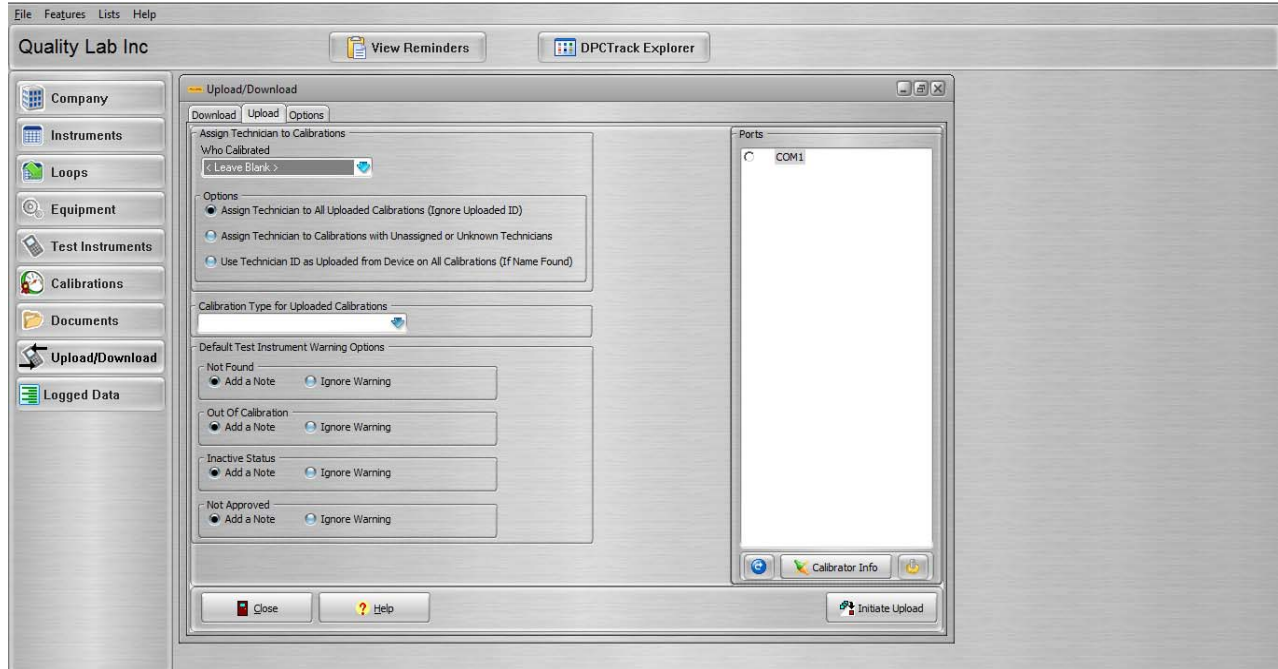


Figure 4.

### **Upload Tab**

Use the *Upload* tab, to import calibration results stored in the Fluke calibrator directly into the DPCTrack2's database.

To initiate an upload, select the desired settings in the left section of the screen, the appropriate *Port* from the right section of the screen, and click the *Initiate Upload* button in the bottom right corner. See Figure 5.



**Figure 5.**

## DPCTrack2 Getting Started

### Options Tab

Use the *Options* tab, to personalize the default settings for how Uploads and Downloads are performed.

The screen contains two tabs, one for both the *Upload* and *Download* functions. See Figure 6.

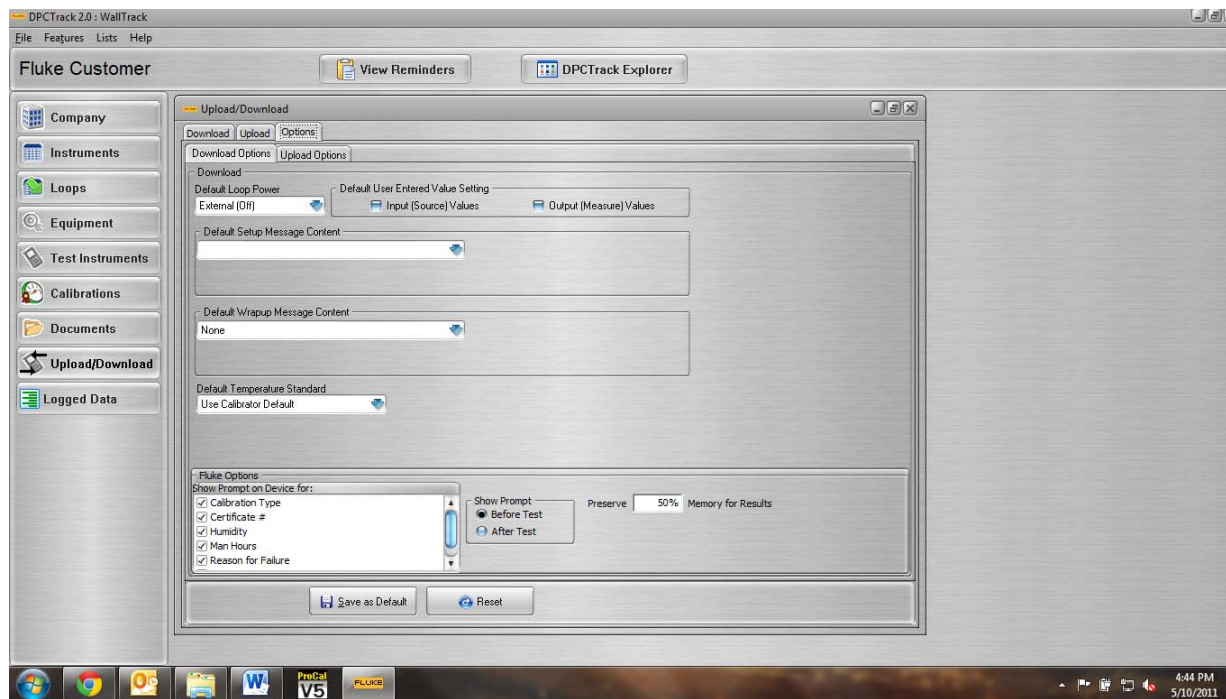


Figure 6.



## **Reports**

The Software comes with a wide range of standard reports created with SAP's *Crystal Reports*™ that can be accessed through the *Reports* menu of the Home Screen. These reports provide a clear visual representation of calibration results and alerts, events due, and item inventories. Reports can also be printed and exported in various formats.

### *Note*

*See Chapter 23 of the User Manual for more information on DPCTrack2's standard reports features.*

## **Software Support**

If you are in need of Technical Support for the Software, contact Fluke at 1-800-443-5853 or visit our website at <http://www.fluke.com/dpctrack>.



