



205 Westwood Ave
Long Branch, NJ 07740
1-877-742-TEST (8378)
Fax: (732) 222-7088
salesteam@Tequipment.NET

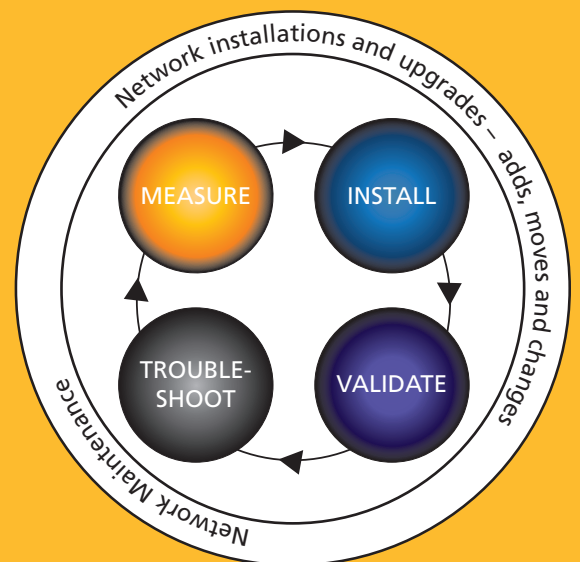


Your everyday assistant

Frontline IT professionals spend most of their day working on network installation and upgrade projects – adds, moves, changes – and keeping existing wired and wireless networks up and running smoothly.

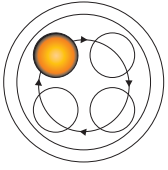
For every installation or upgrade project, the standard work process of measuring, installing, validating and troubleshooting is made easier and faster when using tools designed to help with each activity.

Whether it is completing a project on-time or resolving trouble tickets quickly, the EtherScope analyzer assists with each element of the wired and wireless installation and maintenance workflow.



EtherScope™ Series II Network Assistant

Your fast assistant for LAN and WLAN installation and troubleshooting.



Measure Ethernet performance

Use EtherScope's performance test suite to test LAN and WAN links at rates up to 1000Mbps. Measure Ethernet throughput, latency and loss per industry guidelines. Add jitter and bit error rate measurements to establish a comprehensive baseline of Ethernet performance – useful when investigating complaints of a slow network. Add new users or rollout a new application, like VoIP, with confidence that your network will support these new demands.

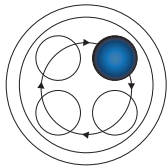
EtherScope makes performance measurement and documentation easy and cost effective. Use the test defaults or create a customized script to accommodate a special need. Add pass/fail limits to know at a glance whether the performance is acceptable, and if not, why. Chose to optimize the tests for accuracy or faster test times. Save the script and share it with others on your team.

Ethernet performance measurement requires a test instrument at each end of the link under test. Keep equipment costs down by using a low-cost Gigabit link

reflector at the far end of the link in place of a full-featured instrument. Minimize test time by deploying multiple remotes across your network and testing multiple links in one automated operation. Quickly assess the truthfulness of complaints of a slow network by permanently locating reflectors at key sites and comparing current performance to your baseline. Avoid trips back to the equipment room or garage to pick-up a shared tool by equipping each team member with his own low-cost test set.



Figure 1: EtherScope analyzer and LinkRunner Pro packet reflector



Install wired and wireless LANs

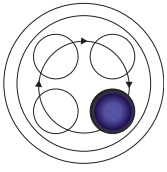
EtherScope helps you complete projects on time and within budget. A typical project consists of several discrete tasks: installing and configuring switches and access points, pulling and patching cabling, testing client connectivity, and verifying network service availability.

EtherScope assists with each of these tasks so that you get the job done right the first time. Just connect the EtherScope to the link under test, thru either the twisted-pair or fiber optic interface, to verify switch and network configurations. Configuration information includes PoE, speed and duplex, switch slot and port, and VLAN membership. Make changes if necessary with built-in management tools. Install an access point and measure Wi-Fi signal coverage and RF health. Mimic a wired or wireless client to confirm network access. Use the Service Performance Tool to verify service availability.

By testing and troubleshooting task-by-task during installation, you will find, and fix problems before they become complex and difficult to solve – allowing you to complete projects more quickly.



Figure 2: Portable network analysis



Validate LAN installations

You completed your LAN installation tasks. The last step before closing out the project is LAN validation. Validation is a benefit for you and your manager. Validation provides you with a measure of confidence that users will be happy with the LAN – they can connect to the network, access key network resources, and the speed will meet expectations. The more satisfied your users, the fewer trouble tickets you will receive. Validation benefits management by serving as proof that the project was done right.

EtherScope features a new Service Performance Tool and expanded Ethernet Performance Tests to validate your LAN. Use the Service Performance Tool to verify and document the availability and responsiveness of key network services – DHCP, DNS, email, web, etc. Use the Ethernet Performance Tests to measure and document the end-to-end performance of LAN and WAN links – throughput, latency, loss, and jitter. Add pass/fail thresholds to all these tests, making it easy for everyone to interpret the results.

Make validation an element of your LAN installation best practice to bring the quality of your work to a higher standard.

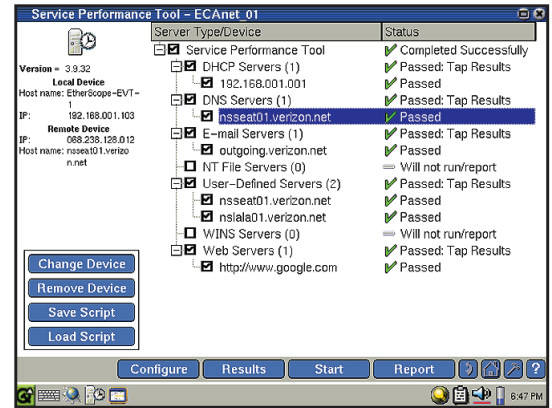
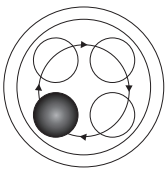


Figure 3: Service performance tool



Troubleshoot wired and wireless problems

When your job is to keep the network up and running, the EtherScope is your first aid kit when emergencies occur. It combines essential tools for troubleshooting a wide range of problems. With both Gigabit LAN and 802.11a/b/g WLAN analysis, you can spot problems quickly so you can solve them even faster.

EtherScope is ready to test today's and tomorrow's networks with full-duplex 10/100/Gig copper and 100/Gig fiber optic interfaces. From the moment you plug the EtherScope into your network, it starts testing and displaying real-time diagnostic results of devices, networks and problems. Intuitive menus make navigation easy and allow you to find exactly the information you need – be it physical layer, protocol statistics, VLAN statistics, device or network discovery, or switch analysis.

EtherScope provides visibility into the RF environment when users report problems with the wireless LAN. Troubleshoot complaints of a slow network by measuring RF metrics like signal coverage, noise, utilization and channel usage. Monitor the authentication and association processes to fix connectivity problems. Discover nearby networks, access

points and clients. Identify unauthorized rogue devices and hunt them down to secure your WLAN from external threats.



Figure 4: Identify and hunt rogue devices

Of special interest

System Integrators and VARs

As a system integrator or value added reseller, your business model is different from a private network owner. You serve many clients and are compensated for services performed. EtherScope's pass/fail LAN validation capabilities can be used to generate additional revenue, by providing documentation that prove projects were done right. Customize EtherScope's reports with your company logo and project-specific comments to differentiate your services from others. And by using EtherScope during the installation stage, you can complete projects quicker and with fewer problems – saving you time and reducing your expenses.

SLA Compliance Testing

Today, utility companies and municipal government entities are offering Ethernet services by leveraging their rights-of-way and their IT investments. They need to measure, assess and document SLA compliance like any other Ethernet service provider. A service level agreement (SLA) between you and your customer defines the level of service you are contracted to provide. With EtherScope's RFC 2544 based performance tests, you can measure and document SLA compliance at rates up to 1Gbps. Flexible test configurations allow you to optimize tests for speed or accuracy, to tailor tests for unique SLA requirements, and to add test limits for simple pass/fail analysis. In addition, you get complete SLA testing at a break-through price. A low-cost Gigabit link reflector lets you test links without a second EtherScope unit. Test as many as seven links for the cost of one alternative test solution.

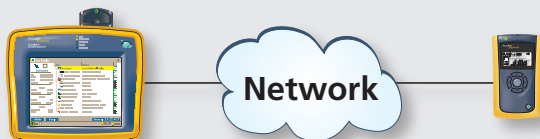


Figure 5: EtherScope analyzer with LinkRunner Pro reflector

Power of wired and wireless analysis

To install and troubleshoot today's mixed 802.3 and 802.11 networks, you need a tool capable of analyzing both – like the EtherScope Pro Network Assistant. Without this capability, your vision is limited and you are seeing only part of the solution. The EtherScope Pro can troubleshoot problems from both sides of the access point, helping you to solve problems more quickly.

Diagnose problems from anywhere via the web

EtherScope fully supports secure remote access and control. So no matter where the problem is, all you need is an active web browser to diagnose remote locations. Just ship an EtherScope to the remote location and instruct a person there to plug it into the network. Diagnose the problem remotely from your desk, saving you travel time and expenses.

Network SuperVision Gold Support

Sign up for our Network SuperVision Gold Support plan and you will enjoy privileges to protect and add value to your EtherScope. These include free software updates, unlimited 24x7 technical assistance, and, in the unlikely event that something happens to your unit, free repairs and a loaner unit. Support also includes unlimited access to the knowledge base, and "members only" promotions.



205 Westwood Ave
Long Branch, NJ 07740
1-877-742-TEST (8378)
Fax: (732) 222-7088
salesteam@Tequipment.NET