

## SimpliFiber Pro Multimode and Singlemode Sources

Sturdily built and encased in a durable molding, the next generation SimpliFiber Pro LED multimode and laser singlemode sources\* retain the familiar intuitive four-button functionality from the popular workhorse SimpliFiber line, while incorporating additional features that make fiber testing even more simple. When combined with a SimpliFiber Pro optical power meter, these sources enable you to:

- Quickly and efficiently measure power and loss at SC, LC, and ST connections using the dual-wavelength testing feature in which both 850 and 1300 nm or 1310 and 1550 nm wavelengths can be transmitted simultaneously
- Conveniently save measurements taken at both wavelengths into one record
- Eliminate time-consuming mistakes with the automatic wavelength detection ability
- Quickly identify patch panel cable routing without the assistance of a talk set and another technician

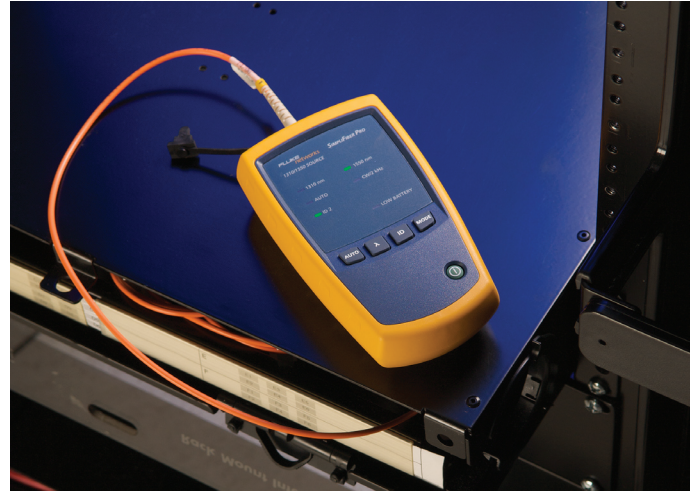
\*The multimode source is standard in the FTK1000, FTK1300, FTK1350, and FTK1450 kits; the singlemode source is standard in the FTK2000 and FTK1450 kits or available separately as a standalone module.



Multimode source    Singlemode source    Both multimode and singlemode sources are available in the FTK1450 Complete Verification Kit

### Specifications

Multimode Optical Source	
Emitter Type	LED
Central Wavelength	850 nm, 1300 nm
Wavelength Accuracy	<ul style="list-style-type: none"> <li>• 850 nm: +30/- 10 nm</li> <li>• 1300 nm: +/- 20 nm</li> </ul>
Spectral Width (FWHM)	<ul style="list-style-type: none"> <li>• 850 nm: 50 nm (typical)</li> <li>• 1300 nm: 135 nm (typical)</li> </ul>
Minimum Output Power	850/1300 nm: $\geq -20$ dBm
Power Output Stability <sup>1</sup>	$\pm 0.1$ dB over 8 hours
Auto Dual-Wavelength Switching	Yes. Can be enabled/disabled by user.
Optical Output Connector	Fixed SC <sup>2</sup>
FindFiber Code Generation	Yes. Fixed at ID 1.
Modes	CW, 2 kHz modulated, Auto-wavelength
Power Requirement	2 AA Alkaline batteries.
Battery Life <sup>3</sup>	40 hrs (typical)
Automatic Power Off	30 minutes (can be disabled by user)
Low Battery Warning	Yes, LED blinks
Size (L x W x H)	5.6 in x 3.2 in x 1.6 in (14.2 cm x 8.1 cm x 4.1cm)
Weight	9.8 oz (278 g)



### Specifications (continued)

Singlemode Optical Source	
Emitter Type	FP Laser: dual 1310 nm/1550 nm
Central Wavelength	1310 nm, 1550 nm
Wavelength Accuracy	<ul style="list-style-type: none"> <li>• 1310 nm: +/- 20 nm</li> <li>• 1550 nm: +/- 30 nm</li> </ul>
Spectral Bandwidth (RMS)	<ul style="list-style-type: none"> <li>• 1310 nm: 2 nm (maximum)</li> <li>• 1550 nm: 3 nm (maximum)</li> </ul>
Minimum Output Power	1310/1550 nm: $\geq -7$ dBm (typical)
Power Output Stability <sup>1</sup>	$\pm 0.25$ dB over 8 hours
Auto Dual-Wavelength Switching	Yes. Can be enabled or disabled by user.
Optical Connector	Fixed SC <sup>2</sup>
Launch Condition	9/125 $\mu$ m fiber
FindFiber Code Generation	Yes. Fixed at ID 2.
Modes	CW, 2 kHz modulated, Auto-wavelength
Power Requirement	CW, 2 kHz modulated, Auto-wavelength
Battery Life <sup>3</sup>	30 hrs (typical)
Automatic Power Off	30 minutes (can be enabled or disabled by user)
Low Battery Warning	LED blinks.
Size (L x W x H)	5.6 in x 3.2 in x 1.6 in (14.2 cm x 8.1 cm x 4.1cm)
Weight	9.8 oz (278 grams)

<sup>1</sup> 23° C  $\pm$  2° C, after 5 minutes warm-up time

<sup>2</sup> LC and ST connectors can be tested using hybrid test-reference cord accessories.

<sup>3</sup> In auto-wavelength mode, battery life depends on the condition and type of batteries used. Fluke Networks recommends alkaline batteries.

#### NETWORK SUPERVISION

Fluke Corporation  
P.O. Box 777, Everett, WA USA 98206-0777

Fluke Networks operates in more than 50 countries worldwide. To find your local office contact details, go to [www.flukenetworks.com/contact](http://www.flukenetworks.com/contact).

©2009 Fluke Corporation. All rights reserved.  
Printed in U.S.A. 1/2009 3441675 D-ENG-N Rev A

New time-saving capabilities, same simple functionality