

SimpliFiber Pro Multimode and Singlemode Sources

Sturdily built and encased in a durable molding, the next generation SimpliFiber Pro LED multimode and laser singlemode sources* retain the familiar intuitive four-button functionality from the popular workhorse SimpliFiber line, while incorporating additional features that make fiber testing even more simple. When combined with a SimpliFiber Pro optical power meter, these sources enable you to:

- Quickly and efficiently measure power and loss at SC, LC, and ST connections using the dual-wavelength testing feature in which both 850 and 1300 nm or 1310 and 1550 nm wavelengths can be transmitted simultaneously
- Conveniently save measurements taken at both wavelengths into one record
- Eliminate time-consuming mistakes with the automatic wavelength detection ability
- Quickly identify patch panel cable routing without the assistance of a talk set and another technician

*The multimode source is standard in the FTK1000, FTK1300, FTK1350, and FTK1450 kits; the singlemode source is standard in the FTK2000 and FTK1450 kits or available separately as a standalone module.



Multimode source



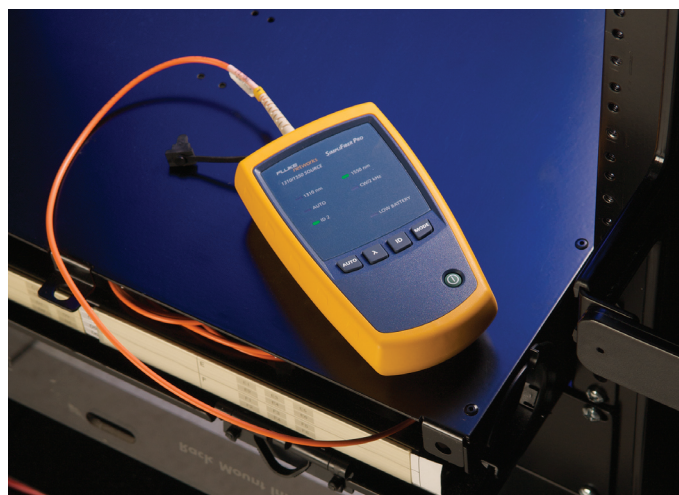
Singlemode source



Both multimode and singlemode sources are available in the FTK1450 Complete Verification Kit

Specifications

Multimode Optical Source	
Emitter Type	LED
Central Wavelength	850 nm, 1300 nm
Wavelength Accuracy	<ul style="list-style-type: none"> • 850 nm: +30/- 10 nm • 1300 nm: +/- 20 nm
Spectral Width (FWHM)	<ul style="list-style-type: none"> • 850 nm: 50 nm (typical) • 1300 nm: 135 nm (typical)
Minimum Output Power	850/1300 nm: ≥ -20 dBm
Power Output Stability ¹	± 0.1 dB over 8 hours
Auto Dual-Wavelength Switching	Yes. Can be enabled/disabled by user.
Optical Output Connector	Fixed SC ²
FindFiber Code Generation	Yes. Fixed at ID 1.
Modes	CW, 2 kHz modulated, Auto-wavelength
Power Requirement	2 AA Alkaline batteries.
Battery Life ³	40 hrs (typical)
Automatic Power Off	30 minutes (can be disabled by user)
Low Battery Warning	Yes, LED blinks
Size (L x W x H)	5.6 in x 3.2 in x 1.6 in (14.2 cm x 8.1 cm x 4.1cm)
Weight	9.8 oz (278 g)



Specifications (continued)

Singlemode Optical Source	
Emitter Type	FP Laser: dual 1310 nm/1550 nm
Central Wavelength	1310 nm, 1550 nm
Wavelength Accuracy	<ul style="list-style-type: none"> • 1310 nm: +/- 20 nm • 1550 nm: +/- 30 nm
Spectral Bandwidth (RMS)	<ul style="list-style-type: none"> • 1310 nm: 2 nm (maximum) • 1550 nm: 3 nm (maximum)
Minimum Output Power	1310/1550 nm: ≥ -7 dBm (typical)
Power Output Stability ¹	± 0.25 dB over 8 hours
Auto Dual-Wavelength Switching	Yes. Can be enabled or disabled by user.
Optical Connector	Fixed SC ²
Launch Condition	9/125 μ m fiber
FindFiber Code Generation	Yes. Fixed at ID 2.
Modes	CW, 2 kHz modulated, Auto-wavelength
Power Requirement	2 AA Alkaline batteries.
Battery Life ³	30 hrs (typical)
Automatic Power Off	30 minutes (can be enabled or disabled by user)
Low Battery Warning	LED blinks.
Size (L x W x H)	5.6 in x 3.2 in x 1.6 in (14.2 cm x 8.1 cm x 4.1cm)
Weight	9.8 oz (278 grams)

¹ 23° C \pm 2° C, after 5 minutes warm-up time

² LC and ST connectors can be tested using hybrid test-reference cord accessories.

³ In auto-wavelength mode, battery life depends on the condition and type of batteries used. Fluke Networks recommends alkaline batteries.

NETWORK SUPERVISION

Fluke Corporation
P.O. Box 777, Everett, WA USA 98206-0777

Fluke Networks operates in more than 50 countries worldwide. To find your local office contact details, go to www.flukenetworks.com/contact.

©2009 Fluke Corporation. All rights reserved.
Printed in U.S.A. 1/2009 3441675 D-ENG-N Rev A

New time-saving capabilities, same simple functionality