

FLUKE®

Tequipment
.NET



205 Westwood Ave
Long Branch, NJ 07740
1-877-742-TEST (8378)
Fax: (732) 222-7088
salesteam@Tequipment.NET



Fluke Ti9 Thermal Imager

**The rugged and affordable
basic thermal imager for
electricians and technicians**

Applications

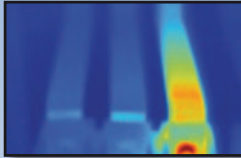
Temperature changes can indicate problems in many areas you see everyday, including:

Electrical distribution and service

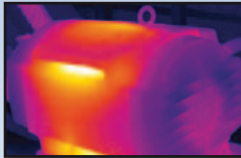
- Switch gear
- Panels
- Controls
- Fuses
- Transformers
- Receptacles
- Lighting
- Conductors
- Bus bars
- Motor control centers

Mechanical

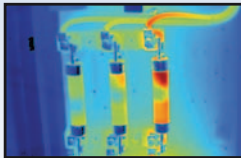
- Motors
- Bearings
- Pumps
- Gear boxes
- Drive belts



Bus bar connection



Verify after repair



Hot fuse

Take a virtual demo at
www.flukecanada.ca/ti9





Ge

Fluke has now provided electricians an solution to get the full picture quickly at an affordable price. If cost was a barrier

Find the hot spots instantly

- Superior resolution to view more essential details
- Small details are visible in a perfectly focused image
- Large widescreen full VGA color LCD display
- Temperature range supports basic electrical and mechanical applications



Get the full picture

and technicians with the perfect
and easily with the right features
prior before, its not any longer.

Easy to use

- Intuitive, three-button menu, simply navigate with the push of a thumb
- Adjustable focus
- Just point, shoot and the image is captured.
It is that easy.

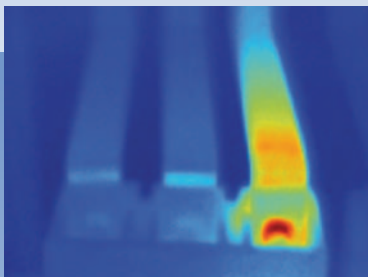
Rugged

- Withstands dust and water, IP54 rating
- Withstands a drop test of 2 meters
- Protective lens cover

FLUKE®



- Point
- Pull the trigger
- Get the full picture



Take a virtual demo at
www.flukecanada.ca/ti9

Specifications

	Ti9
Detector size	160 x 120
Thermal sensitivity (NETD)	≤0.2 °C at 30 °C (200 mK)
Field of View (FOV)	23 ° x 17 °
Minimum focus distance	15 cm
Temperature range	-20 °C to +250 °C (-4 °F to +482 °F)

For full specifications go to www.flukecanada.ca/ti9

Includes everything you need to get started:

SmartView® analysis and reporting software, 2 GB SD card, SD card reader, hard and soft carrying case, hand strap, rechargeable battery, AC charger/power supply, training DVD.



Ordering information

Fluke Ti9 Thermal Imager

		205 Westwood Ave Long Branch, NJ 07740 1-877-742-TEST (8378) Fax: (732) 222-7088 salesteam@Tequipment.NET

Fluke. *Not just infrared.
Infrared you can use.™*

©2011 Fluke Corporation. Specifications subject to change without notice. 7/2011 4092971A

Modification of this document is not permitted without written permission from Fluke Corporation.