

Adding and viewing HTML files using the MetroScope™ Service Provider Assistant

Technicians in the field often need to access method and procedure documents relevant to the tasks at hand. Carrying a printed manual is obviously not convenient. And accessing documentation on a laptop means you'd have to carry yet another piece of gear to the job. Wouldn't it be helpful if the documents could be stored on your portable test tool? The MetroScope Service Provider Assistant from Fluke Networks makes it possible.

With features like a large display, built-in browser and onboard CompactFlash (CF) memory, MetroScope provides technicians in the field a quick and easy way to access documentation you need to get the job done.

This application note details the process for loading and accessing documents on the MetroScope Service Provider Assistant.

Adding and viewing HTML files

Electronic documents can be added to the MetroScope by saving them to the unit's CompactFlash (CF) card as HTML files. These files can then be viewed using MetroScope's embedded file manager and browser.

Creating HTML files

Converting your documents from Microsoft Word to HTML is easy. Open the Word document and select Save As from the File dropdown menu. Click on the Save as type dropdown menu near the bottom of the dialog box. Choose Web page (*.htm; *.html). By doing this, you will create a folder containing the HTML data files, as well as a corresponding .htm file for loading the page on your MetroScope.

Name	Size	Type	Date Modified
MP_converted_files		File Folder	1/4/2008 9:25
MP_converted_.htm	273 KB	HTML Document	12/12/2007 1:

Figure 1: An HTML data file folder and an .htm file – both created by converting a single Microsoft Word document to HTML.

Saving files to CF card

To view the document on the MetroScope, you must copy both the HTML data file folder and the .htm file to the same directory on the CF card. Fluke Networks recommends you first create a folder named "HTML" under the root directory of the CF card. Then simply copy both items to this HTML folder. This process can be repeated for various data folders and .htm documents – all of which can be saved to the same HTML folder.




Name	Size	Type	Date Modified
AN SNMP_files		File Folder	1/4/2008 8:32 AM
AN Test Layers_files		File Folder	1/4/2008 8:38 AM
AN Test Results_files		File Folder	1/4/2008 8:38 AM
AN Test Scripts_files		File Folder	1/4/2008 8:39 AM
AN Test Targets_files		File Folder	1/4/2008 8:41 AM
AN Test Types_files		File Folder	1/4/2008 8:42 AM
MP_converted_files		File Folder	12/12/2007 1:50 PM
AN SNMP.htm	32 KB	HTML Document	1/4/2008 8:32 AM
AN Test Layers.htm	43 KB	HTML Document	1/4/2008 8:38 AM
AN Test Results.htm	42 KB	HTML Document	1/4/2008 8:38 AM
AN Test Scripts.htm	42 KB	HTML Document	1/4/2008 8:39 AM
AN Test Targets.htm	45 KB	HTML Document	1/4/2008 8:41 AM
AN Test Types.htm	42 KB	HTML Document	1/4/2008 8:42 AM
MP_converted_.htm	273 KB	HTML Document	12/12/2007 1:50 PM

Figure 2: A folder directory showing HTML data file folders and .htm files, representing several separate Microsoft Word documents.



Viewing HTML files on the MetroScope

Now that the documentation you need is saved to the MetroScope's CF card, here's how you can view the files on the instrument's display:

1. Make sure the CF card is inserted into the proper slot on the MetroScope.
2. Select the Start icon in the bottom left corner of the MetroScope. 
3. From this menu, select the Applications icon. 
4. Once the applications screen is fully loaded, select the File manager icon. 
5. After the File manager has loaded, you'll see a list of folders and files from the CF card's root directory. Select the "HTML" folder you created earlier – and which should contain the HTML data folders and .htm files you saved there.
6. You should see a list of the HTML folder's contents (HTML data folders and .htm documents). Select the .htm file for the document you want to view by double clicking or double tapping the file.



7. The embedded browser should automatically launch and the document you want to view should appear.

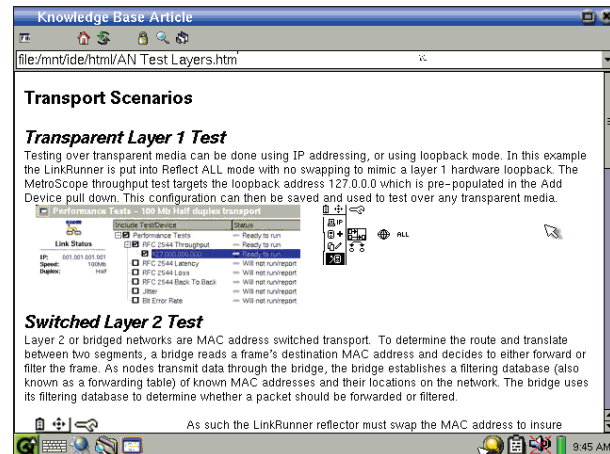


Figure 3: MetroScope Service Provider Assistant displaying an HTML document.



205 Westwood Ave
Long Branch, NJ 07740
1-877-742-TEST (8378)
Fax: (732) 222-7088
salesteam@Tequipment.NET