

# NetTool™ Series II Inline Network Tester

## Helpful Hints

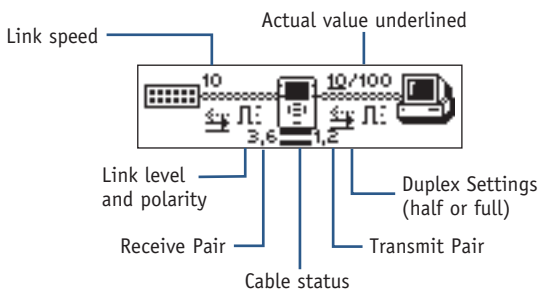
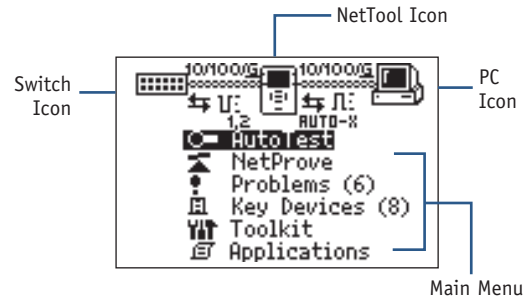
### Starting Up:

- Plug NetTool Series II into a wall plate or inline between two devices like a switch and a PC, IP Phone or Access Point, with the network on the left RJ-45.
- Press the green *Power* button firmly for one second to turn NetTool on. You will see the following screen:



### AutoTest:

- Press Select to begin the AutoTest.
- NetTool listens to the network traffic and displays information about PC and link configuration, network health, key devices, problems, and more.



### Buttons and Indicators:



### Navigation Keys:

- The Navigation Keys allow you to access all of the NetTool functions.
- Press the Navigation Keys to scroll to any menu item (including the NetTool, Switch and PC icons) and press Select.

**Tip:** You can exit out of many screens by scrolling to the and pressing Select.

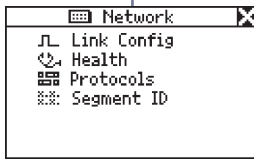
### NetTool Series II Setup:

- Press up arrow key to highlight the NetTool icon.
- Press Select to access NetTool setup.
- Use the Navigation Keys to view and change any of the Settings preferences.

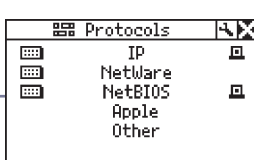
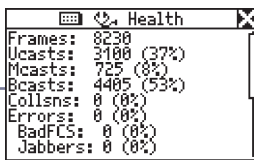
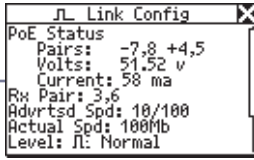


# Active Networking Testing Icons

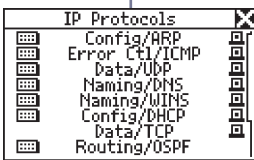
Select the Network Icon



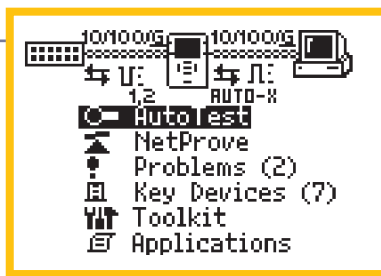
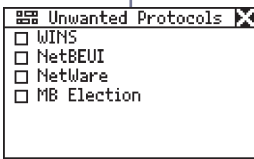
Select Menu Items For Vision Into the Network



Select Protocol



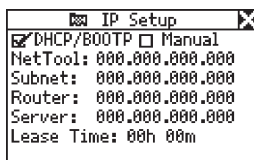
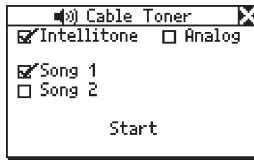
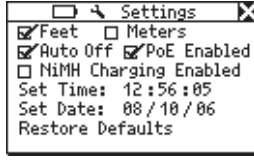
Select Tool Icon



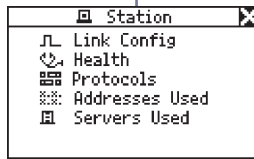
Select the NetTool Icon



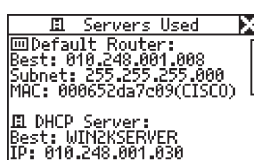
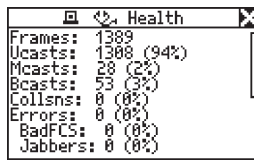
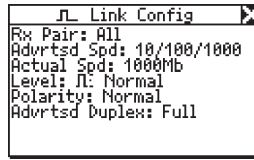
Select Menu Items To Configure NetTool



Select the PC Icon



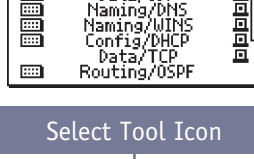
Select Menu Items For Vision Into the Device



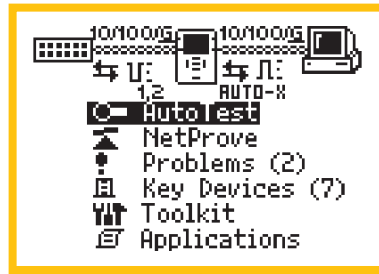
Select Protocol



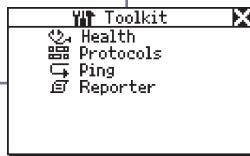
Select Tool Icon



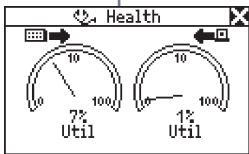
# Active Network Testing Menu



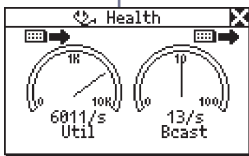
## Select Toolkit



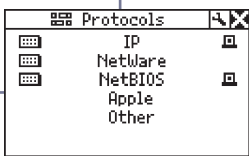
### Select Health



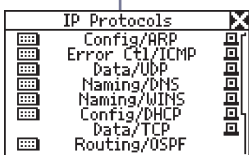
### Change Direction, Units, Or Metric



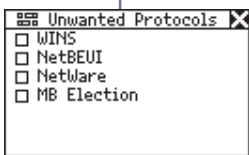
### Select Protocols



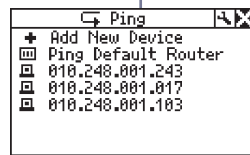
### Select Protocol



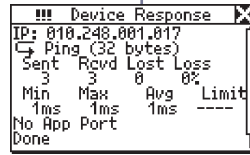
### Select Tool Icon



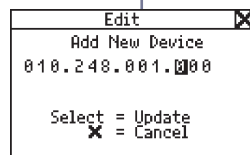
### Select Ping If Single-Ended



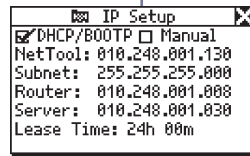
### Select Device



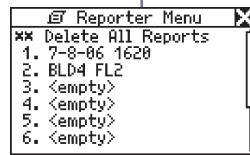
### Add Device



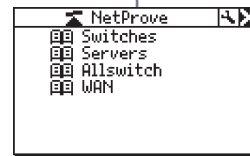
### Select Tool Icon



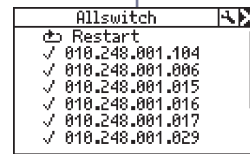
### Select Reporter



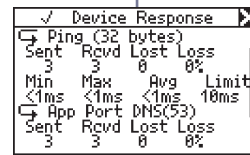
## Select NetProbe If Single-Ended



### Select Catalog



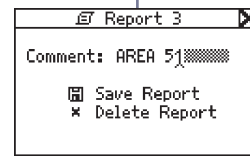
### Select Device



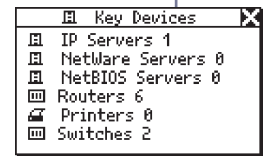
### Select Problems



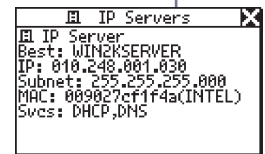
### Save Report



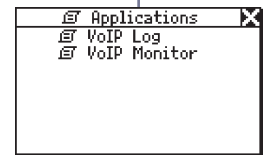
## Select Key Devices



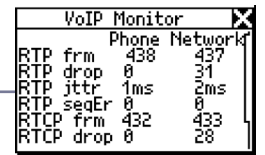
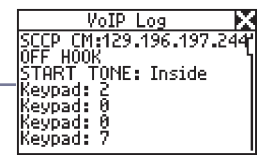
### Select Device Type



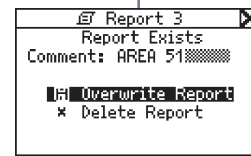
### Select Applications



### Select Menu Item

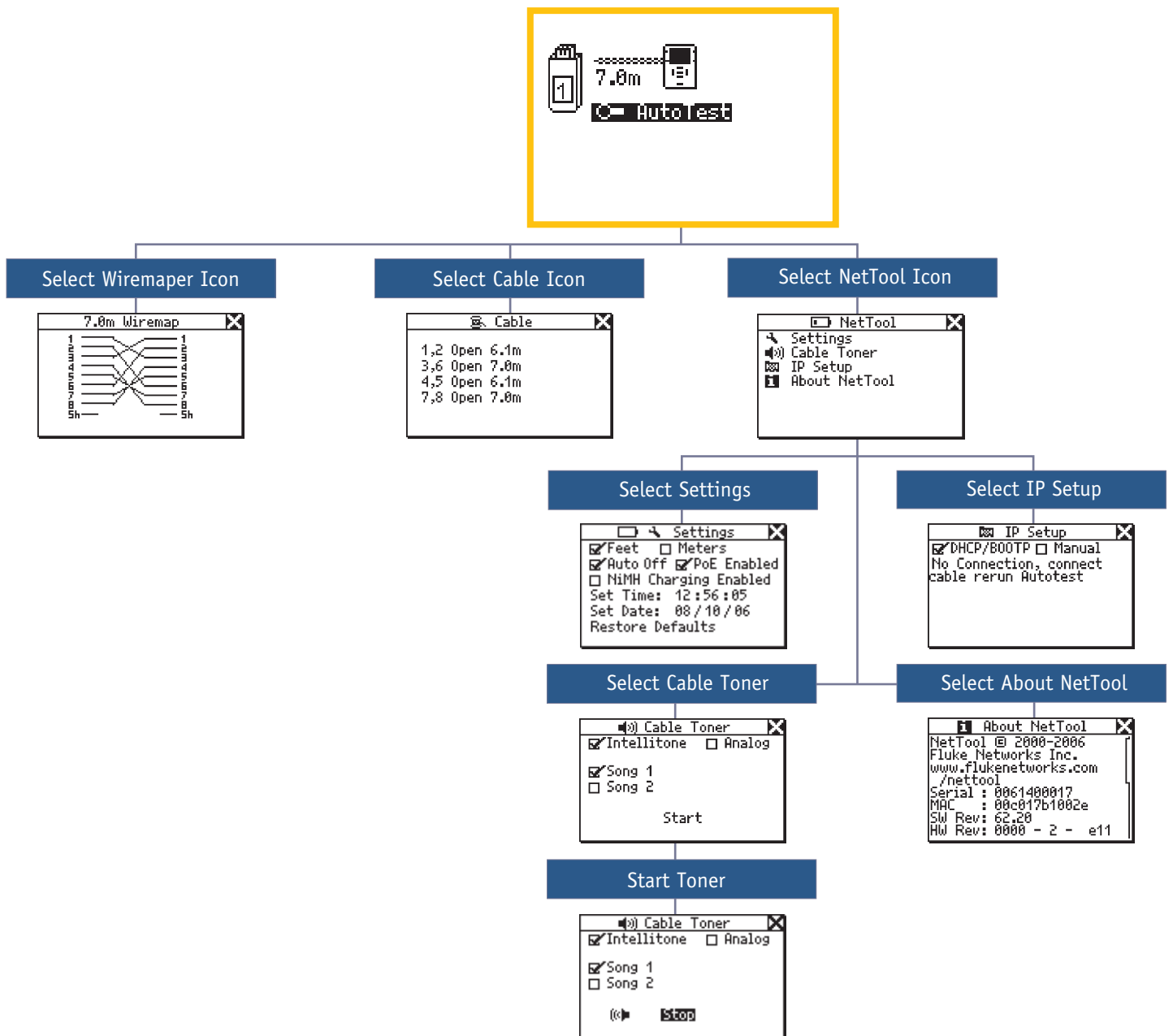


### Overwrite Report





# Cable Infrastructure Testing





**205 Westwood Ave**  
**Long Branch, NJ 07740**  
**1-877-742-TEST (8378)**  
**Fax: (732) 222-7088**  
**salesteam@Tequipment.NET**