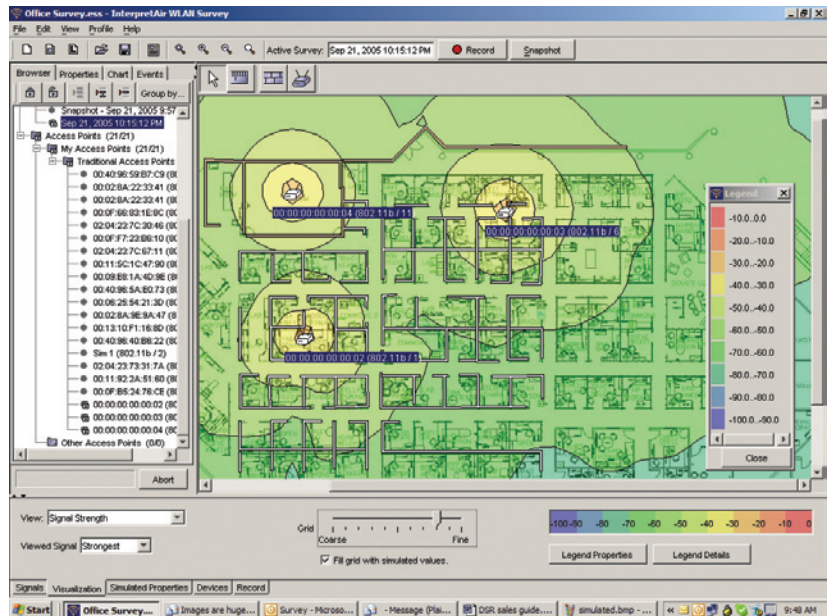


# InterpretAir™ WLAN Survey Software

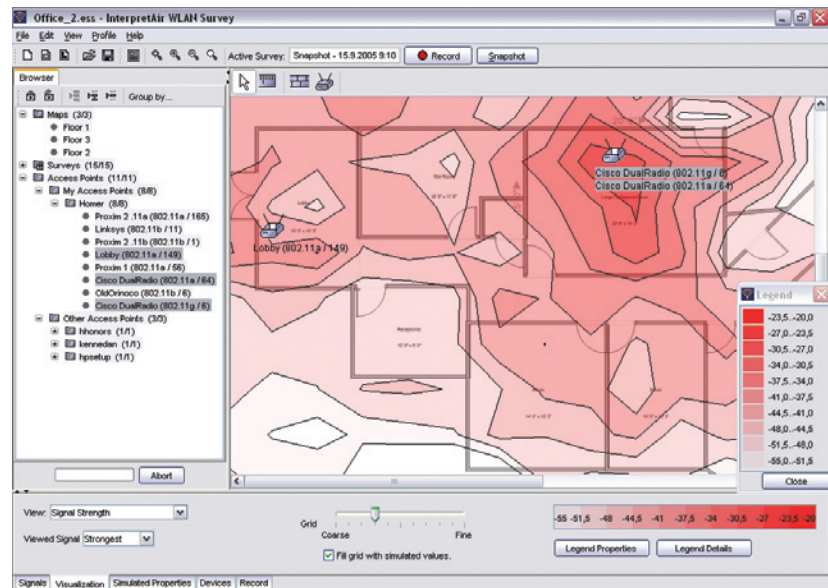
*Intelligent wireless LAN planning,  
simulation and verification*

*InterpretAir software is a wireless site survey tool and much more; it provides clear visualization of 802.11a/b/g WLAN health metrics, greatly simplifying wireless deployment and environment analysis, allowing users to quickly optimize coverage and ensure optimum performance.*

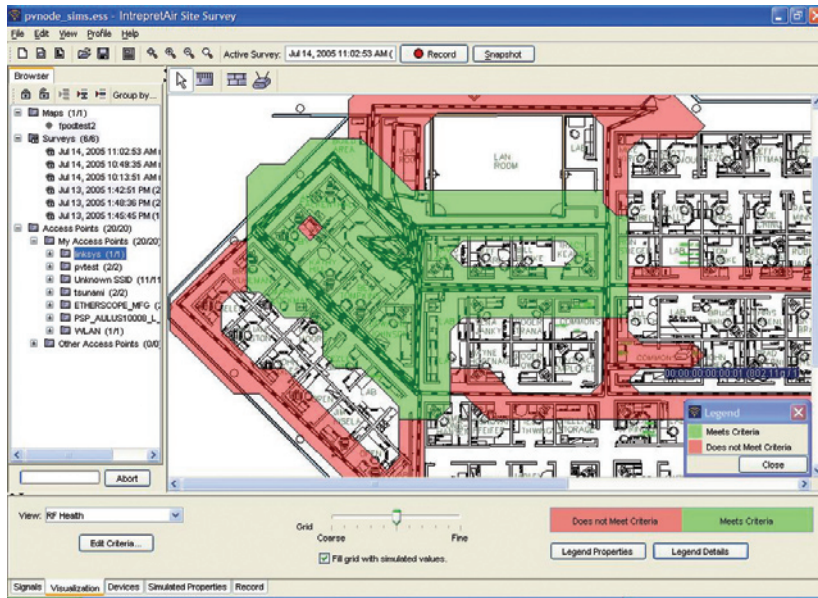
*Instead of manual tools and paper-based documentation, which are difficult to use and provide no automatic analysis of the RF environment, InterpretAir is an intuitive laptop-based RF site survey tool that quickly identifies where to install wireless access points to ensure optimum performance for mobile applications.*



Wireless network simulation capabilities enable you to predict network performance and make better decisions regarding the number of access points required, and appropriate placement.

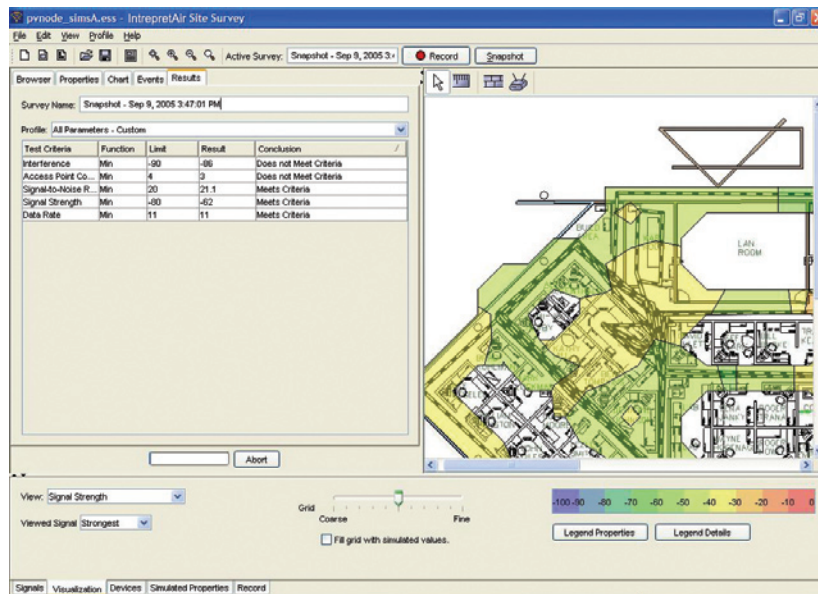


The signal strength visualization indicates areas within the building where additional access points should be installed to ensure persistent connectivity and seamless roaming. Verify wireless performance post installation, and make adjustments to optimize performance.



Compared to other site survey products, InterpretAir software, with its unique RF Health feature, takes wireless analysis to a new level by enabling visualization of multiple measurement criteria in a single view, simplifying analysis and accelerating decision making.

RF Health visualization function provides fast analysis of the wireless environment and compares real measurements to customer defined performance criteria for interference, data rate, AP count, signal strength, and signal to noise ratio. Isolate and identify problem areas then modify the wireless environment accordingly.



SnapShot, a feature unique to InterpretAir software, accelerates troubleshooting by quickly comparing RF performance at a fixed location against customer defined criteria. Prove the problem is not with the RF physical layer as a first step in troubleshooting the network.

For more information, visit



**205 Westwood Ave**  
**Long Branch, NJ 07740**  
**1-877-742-TEST (8378)**  
**Fax: (732) 222-7088**  
**salesteam@Tequipment.NET**