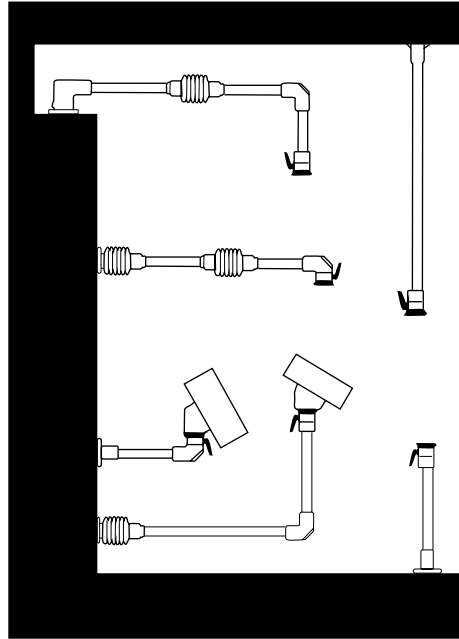


## Suspension Systems - NEMA 12, 13

Heavy Duty 50 mm or 80 mm

Operator Interface Enclosure



### Application

- Command 50mm and 80mm enclosure suspension systems are designed for medium and heavy loads.
- The strength of square tube and cast fittings provide a highly flexible, robust system.

### Standards

- **Complies with**
  - IEC 60529, IP 54

### Construction

- Enclosure coupling and elbow coupling fittings are die-cast from G Al Si 12 aluminum.
- All other fittings are die-cast 4G-s.g. iron.
- Suspension tubing is steel.

### Finish

- Fittings are finished in RAL 7040 window gray powder coating.
- Suspension tubing is RAL 7035 light gray powder coating.

Suspension System



205 Westwood Ave  
Long Branch, NJ 07740  
1-877-742-TEST (8378)  
Fax: (732) 222-7088  
salesteam@Tequipment.NET

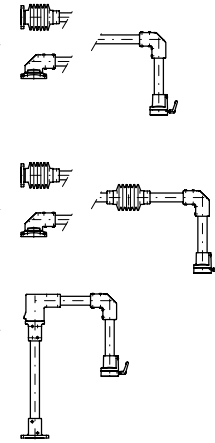
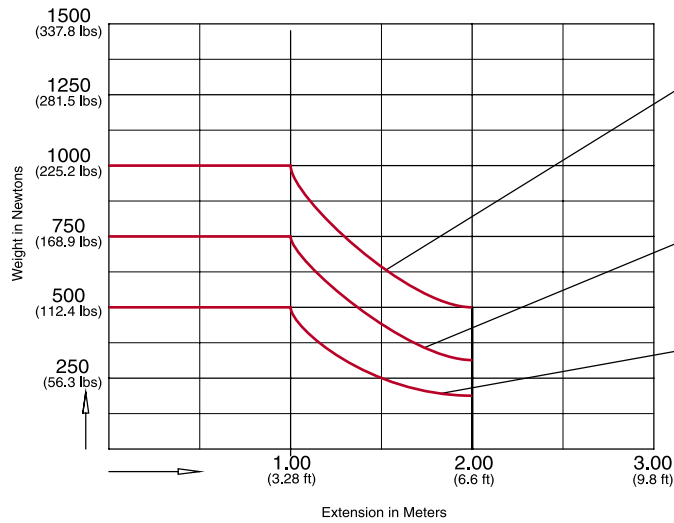
# Suspension Systems - NEMA 12, 13

Heavy Duty 50 mm or 80 mm

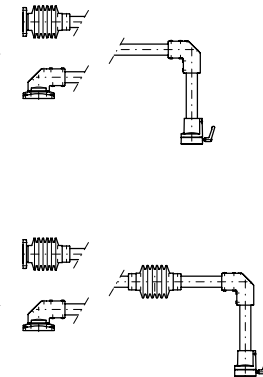
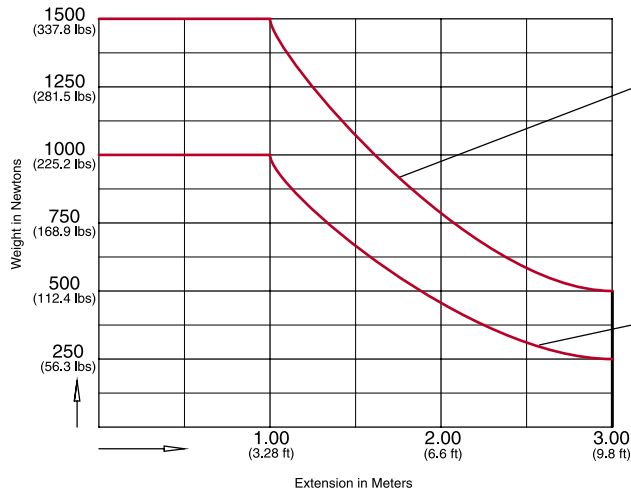
Operator Interface Enclosure

Suspension System

## Load Capacity for 50mm



## Load Capacity for 80mm



### Measurement Conversions

1 kg = 9.81 N

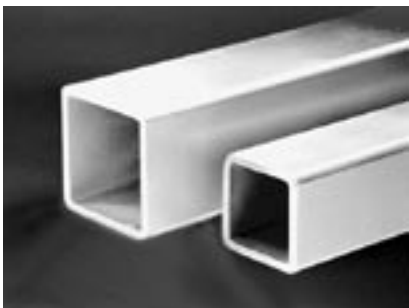
1 lb = 4.44 N

e.g. 500 Newtons = 51 kg = 112.4 lbs

300 Newtons = 30.6 kg = 67.4 lbs

100 Newtons = 10.2 kg = 22.5 lbs

1 foot = 0.305 m



## Suspension Tube

Part No.	Outside mm	Inside mm	Tolerance	Length		Ship Wt. lbs
				Metres	Feet	
R144-021-000R	50	40	±0.5	1	3.28	17
R144-022-000R	Square			2	6.56	26
R144-041-000R	80	70	±0.6	1	3.28	21
R144-042-000R	Square			2	6.56	33

All dimensions in inches unless specified otherwise

# Suspension Systems - NEMA 12, 13

## Heavy Duty 50 mm or 80 mm Components

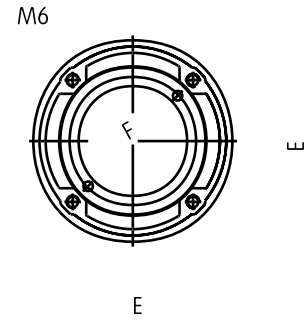
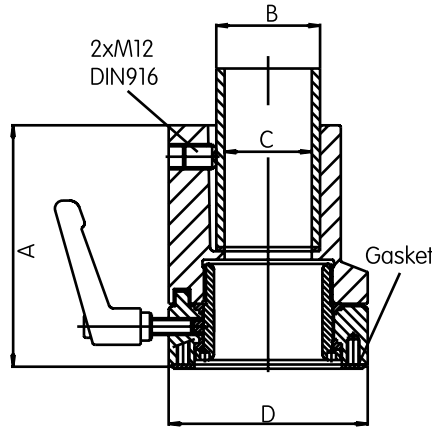
Operator Interface Enclosure



### Enclosure Coupling

- Cast aluminum.
- Large thrust flange.
- Fastens with 4 hex socket screws.
- Adjustable torque resistance.
- Features a rotation range of 300°.

Part No.	System	A	B	C	D	E	F	Ship Wt. lbs.
R147-025-000R	in	50	4.53	1.97	1.65	3.78	2.28	2.06
	mm		115	50	42	96	58	52.3
R147-025-200R	in	80	5.71	3.15	2.83	5.47	3.42	3.35
	mm		145	80	72	139	87	85



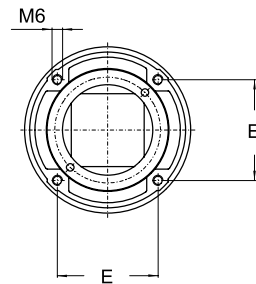
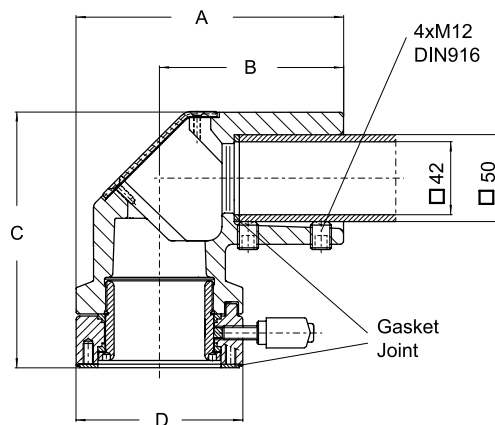
Suspension System



### Elbow Coupling

- Cast Aluminum
- Large thrust flange.
- Fastens with 4 hex socket screws.
- Adjustable torque resistance.
- Features a rotation range of 300°.

Part No.	System	A	B	C	D	E	Ship Wt. lbs.
R147-035-000R	in	50	6.06	4.17	5.79	3.78	2.28
	mm		154	106	147	96	58
R147-035-200R	in	80	8.21	5.47	7.48	5.47	3.43
	mm		208.5	139	190	139	87



All dimensions in inches unless specified otherwise

## Suspension Systems - NEMA 12, 13

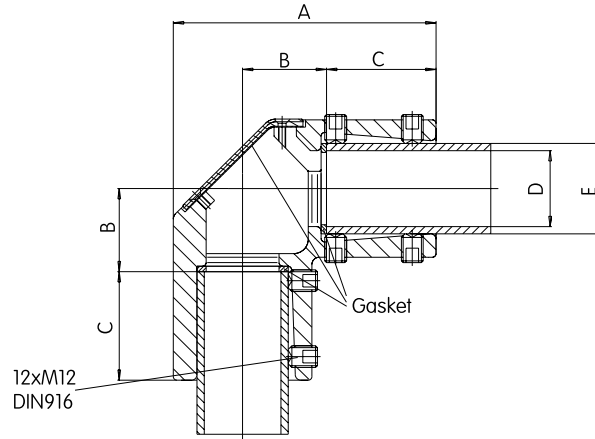
### Heavy Duty 50 mm or 80 mm Components



### Elbow

- Cast Aluminum
- Large cover opening for easier cable pull through.

Part No.	System	A	B	C	D	E	Ship Wt. lbs.
<b>R147-020-000R</b>	in	50	5.67	1.81	2.36	1.65	1.97
	mm		144	46	60	42	50
<b>R147-020-200R</b>	in	80	7.60	2.20	3.27	2.76	3.15
	mm		193	56	83	70	80



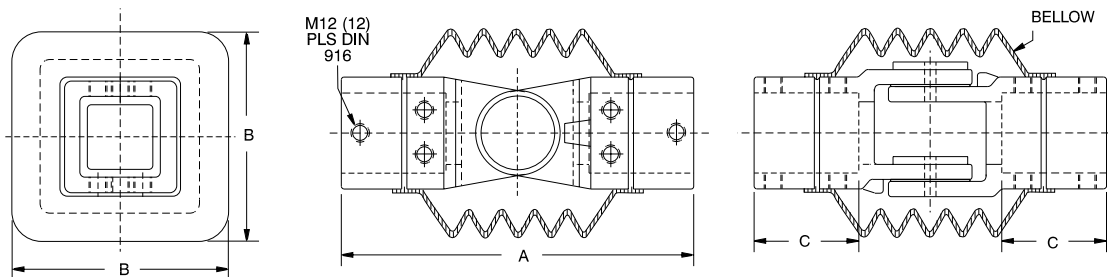
Operator Interface Enclosure



### Intermediate Joint

- 4G-s.g. cast iron.
- Integrated movement stop.
- One piece bellow.
- Two sleeves.
- Features a rotation range of 170°.

Part No.	System	A	B	C	Ship Wt. lbs.
<b>R147-015-000R</b>	in	50	9.29	5.51	2.76
	mm		236	140	70
<b>R147-015-200R</b>	in	80	12.60	7.09	3.82
	mm		320	180	97



Suspension System

All dimensions in inches unless specified otherwise

# Suspension Systems - NEMA 12, 13

## Heavy Duty 50 mm or 80 mm Components

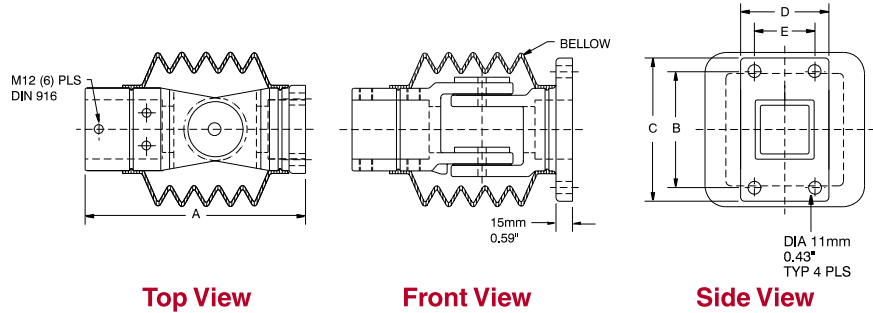
Operator Interface Enclosure



### Wall Joint

- 4G-s.g. cast iron.
- Integrated movement stop.
- One piece bellow.
- Two sleeves.
- Features a rotation range of 170°.

Part No.	System	A	B	C	D	E	Ship Wt. lbs.
R147-010-000R	in	50	7.87	4.13	5.12	3.15	2.17
	mm		200	105	130	80	55
R147-010-200R	in	80	10.83	5.91	6.89	4.53	3.54
	mm		275	150	175	115	90

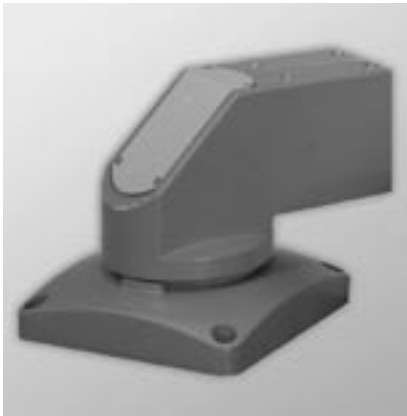


Top View

Front View

Side View

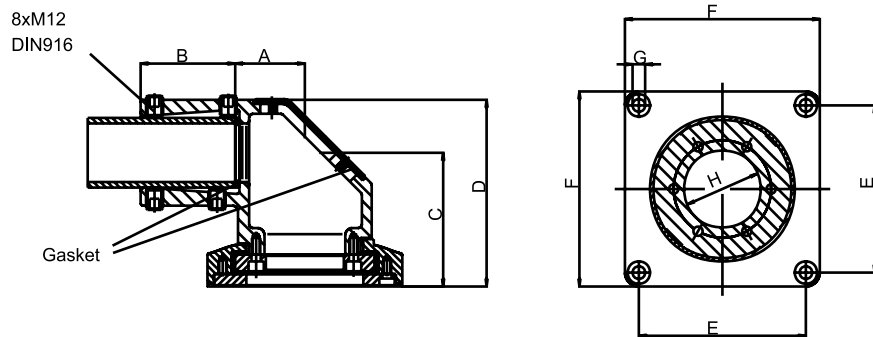
Suspension System



### Socket Joint

- Cast Aluminum.
- Integrated movement stop.
- Service free bearings.
- Features a rotation range of 300°.
- Can mount on top of machine or inverted.

Part No.	System	A	B	C	D	E	F	G	H	Ship Wt. lbs.
R147-005-000R	in	50	1.97	2.68	3.78	5.28	4.72	5.51	.35	2.17
	mm		50	68	96	134	120	140	9	55
R147-005-200R	in	80	2.91	3.86	5.57	7.70	7.09	8.27	.51	3.30
	mm		74	98	141.5	195.5	180	210	13	84



# Suspension Systems - NEMA 12, 13

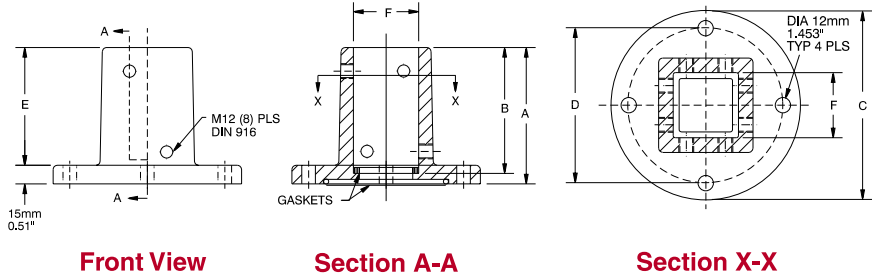
## Heavy Duty 50 mm or 80 mm Components



### Cast Iron Base

- 4G-s.g. cast iron.
- Gasket included.
- Does not rotate.

Part No.	System	A	B	C	D	E	F	Ship Wt. lbs.
<b>R147-030-000R</b>	in	50	4.33	3.94	5.98	4.92	3.74	1.97
	mm		110	100	152	125	95	50
<b>R147-030-200R</b>	in	80	5.51	5.12	7.87	6.81	4.92	3.15
	mm		140	130	200	173	125	80



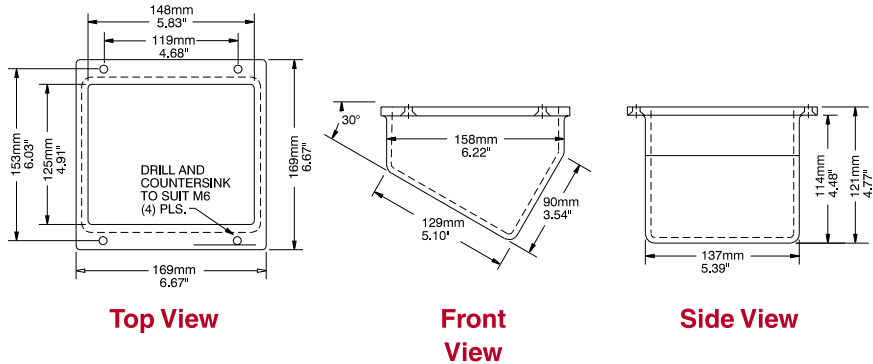
Operator Interface Enclosure



### Slope Adaptor

- Provides 30° or 60° incline by mounting to rear of enclosure.
- Cast aluminum.

Part No.	Ship Wt. lbs.
<b>R140-045-000R</b>	8



Suspension System



**205 Westwood Ave**  
**Long Branch, NJ 07740**  
**1-877-742-TEST (8378)**  
**Fax: (732) 222-7088**  
**salesteam@Tequipment.NET**