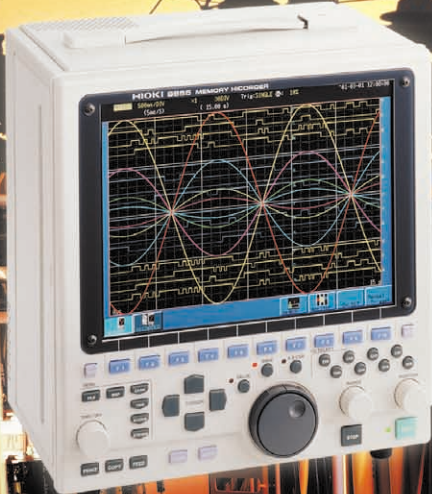


Helpful Hints for Inspection and Maintenance of Electric Power Equipment and How to Investigate the Cause of Power Problems



For Waveform Anomaly Analysis



For Power Quality Analysis



Easy Current Recording



For Temperature Anomaly Analysis



For High Current Measurements
(5000A AC Flexible Clamp Sensor)



Maintain, Inspect and Manage the Various Electrical

Power Transmission Facilities

- Diagnose faults in UPS and batteries with models such as the 3551
- Reveal malfunctions in transmission equipment with Model 8855



3551

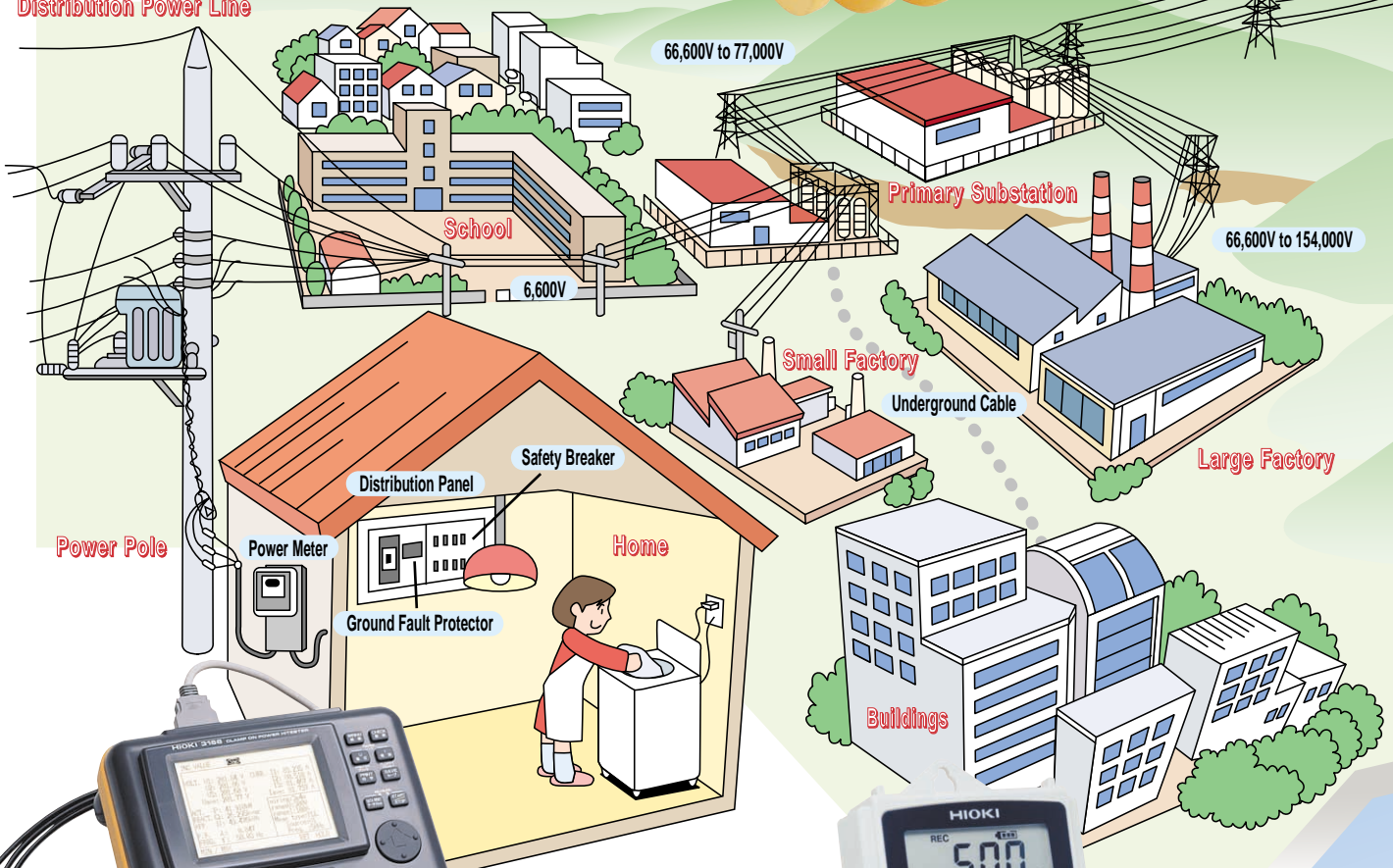
Power Distribution Facilities

- Measure power system harmonics with Models 3196, 8807-51/8808-51 and 3166
- Measure power system flicker with Model 3196
- Measure high-tension power pole current and voltage with Model 3636-20
- Monitor distribution panel enclosure temperature with Model 3460



3196

Distribution Power Line



3166

3641-20

- Monitor distribution panel voltages and currents with Models 3636-20 and 3637-20
- Monitor cumulative power metering with Models 3166 and 3639-20
- Measure standby power with Model 3332
- Collect energy saving measurements with Model 3166 and 3636-20 Data Logger Series

Multiple Energy Monitoring

- Record vault temperature and humidity with Model 3641-20 Data Logger Series

Underground Power Transmission Facilities

Energies from the Power Plant to the Factory or Home!

Clean Energy Equipment

- Investigate wind and solar generator power quality with Model 3196
- Confirm geothermal power generation conditions with Model 3193
- Record fuel cell voltage output with Models 8420-01 and 8421-01



8421-01

Power Generation Facilities

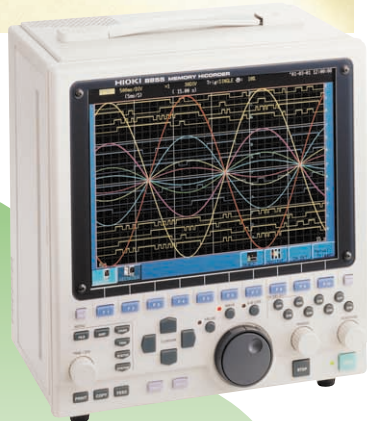
Models 8841, 8842, 8826 and 8855 MEMORY HiCODERS:

- For testing load breakers
- For testing protective relays
- For confirming control signals
- For recording motor start current

Models 3166 and 3196: For confirming drive power

Model 3641-20 Data Logger Series: For measuring temperature within panel enclosures

8855



High Tension
Transmission Lines

110,000V to 154,000V

Supervoltage
Transformer Substation

187,000V to 500,000V

Hydroelectric Power Plant

Nuclear Power Plant

Fuel Burning Power Plant

- For testing protective relays, Models 8841, 8842 and 8826
- For testing circuit breakers, Model 8841 and 8842
- For recording voltage and current waveforms during ground faults, Models 8841, 8842 and 8826
- For checking PT/CT circuit wiring, Model 3196
- For measuring miniature circuit breaker (miniclat) contact resistance, Model 3227
- For monitoring temperature in substations, Model 3460
- For measuring noise in substations, Model 3430
- For recording anomalies in unattended substations, Models 8807-01, 8808-01 and 3196

Substation and Control Station Facilities



3460

Memory HiCORDERs



8807-51, 8808-51 MEMORY HiCORDERs

The -51 models can measure harmonic waveforms. Portable waveform recorders with attachable two- and four-channel printers.



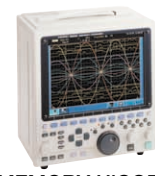
8841/8842 MEMORY HiCORDERs

Remote control capability by PC through a LAN. Sixteen digital and analog channels with a variety of input modules.



8826 MEMORY HiCORDER

Thirty-two isolated analog and 32 logic inputs. High speed waveform recorder with LAN and large capacity memory support.



8855 MEMORY HiCORDER

Isolated eight-channel digital high speed memory recorder with 20 MS/s. Large internal memory allows efficient overall analysis of unexpected phenomena and waveform anomalies.

Clamp-On Power HiTESTERs, Power HiTESTERs



3166 CLAMP ON POWER HiTESTER

Clamp type power meter enables processing and analysis on a PC by saving measurement data for power management on a floppy disk.



3196 POWER QUALITY ANALYZER

Monitor and record power quality of electrical transmission and distribution systems, with LAN support. Reliably captures abnormal power phenomena for optimal troubleshooting analysis.



9667 FLEXIBLE CLAMP ON SENSOR

Measures up to 5000A AC. Support for large diameter (254-mm) conductors is ideal for measurement and quality management of high current circuits with Model 3196.



3332 POWER HiTESTER

Single-phase power meter measures low (standby) power levels of 1W or less. Three-phase Model 3331 is also available.

Data Logger Series



3641-20 HUMIDITY LOGGER

Inexpensive, easy-to-use miniature logger collects temperature, humidity, instrumentation and various analog data for easy management on a PC.



3636-20 CLAMP LOGGER

Easily record AC current with this clamp. The 3637-20 AC Voltage Logger provides voltage recording.



3639-20 PULSE LOGGER

Easily count pulses output from power or flow meters. Includes an alarm output setting function.



8420-01/8421-01 MEMORY HiLOGGERS

These loggers with LAN support provide up to 8 or 16 isolated channels for voltage, temperature and pulse inputs.

Inspection and Other Related Measurement Devices



3460 2D THERMO HiTESTER

Displays combined infrared images and multi-point measurement maps. Sixty-four independent temperature measurements are ideal for monitoring for temperature anomalies.



3550/3551 BATTERY HiTESTER

Instantly detects weak condition of various secondary batteries. Measures without interrupting the UPS.



3227 mΩ HiTESTER

Low-resistance meter has resolution to 10 μΩ, while supporting high speed sampling. Includes a probe for miniclac measurements.



3660 LAN CABLE HiTESTER

Ideal for ensuring reliable installation and maintenance of UTP cable. Includes the capability to verify wiring integrity and detect faulty connections.



3286 CLAMP ON POWER HiTESTER

Handy power meter with harmonic measurement function. Battery operation allows power and harmonic measurements to be taken anywhere.



3281/3282 DIGITAL CLAMP ON HiTESTER

Satisfies CAT III 600V safety standards. Provides multiple functions such as RMS measurements ideal for measuring distorted waveforms, and crest factor display function.



3257-51 DIGITAL HiTESTER

Satisfies CAT III 1000V. This DMM is designed for particular safety when measuring true RMS, with a crowbar terminal that prevents erroneous operations.



8205-10/8206-10 MICRO HiCORDER

Simple operations record voltage and current fluctuations.

HIOKI

HIOKI E. E. CORPORATION

Tequipment
.NET



205 Westwood Ave
Long Branch, NJ 07740
1-877-742-TEST (8378)
Fax: (732) 222-7088
salesteam@Tequipment.NET