

MULTI PURPOSE LCD PROJECTORS

INNOVATE
The Future of Projection

Touchboards
205 Westwood Ave, Long Branch, NJ 07740
Phone: 866-94 BOARDS (26273) / (732)-222-1511
Fax: (732)-222-7088 | E-mail: sales@touchboards.com

► CP-X2514WN ► CP-X3014WN ► CP-X4014WN ► CP-WX3014WN

Feature packed, high contrast (3000:1)
wireless network projectors for
classrooms and meeting rooms



www.hitachidigitalmedia.com

HITACHI
Inspire the Next

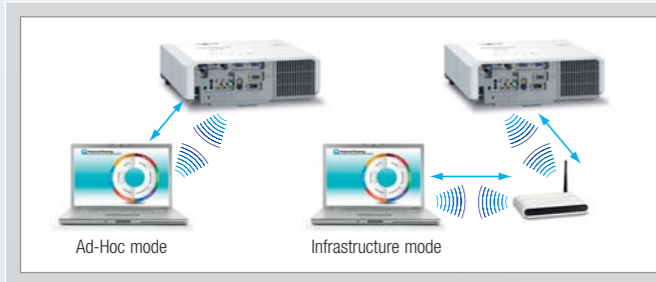
Make presentations easier, clearer and more effective with Hitachi's wireless network projectors.

Successful lessons and meetings depend on clear communication with everyone in the room. Hitachi's range of Multi Purpose projectors have been developed around the latest wireless projector technology enabling presenters and the audience to contribute to presentations easily.

Wireless connectivity

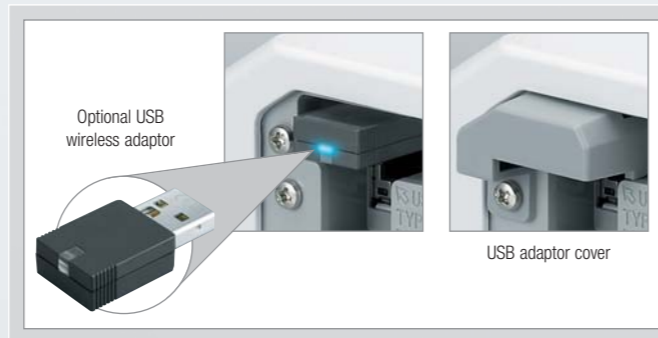
Wireless capability

Hitachi's range of Multi Purpose projectors allow you to connect to your wireless network, letting you run lessons or presentations wirelessly from your laptop. The USB wireless adaptor enables the projector and computer to communicate both directly or via a wireless network infrastructure.



Wireless network functionality

The optional USB wireless adaptor supports all IEEE802.11b/g/n networks, and simply slots into place. The handy cover protects the adaptor whilst inserted.



Valuable performance features

Present without a PC

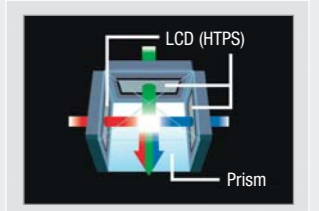
A USB memory stick* or other suitable storage device allows you to display your presentation or images through the projector without the need of a computer. The thumbnail display ensures that menus are easy to see, and there is also a slideshow function.

*Not compatible with all USB storage devices.



Inorganic LCD panels

These projectors use inorganic LCD panels – the latest projector technology – to produce clear images while ensuring longer life without fading. This means high reliability and less maintenance, reducing total ownership costs.

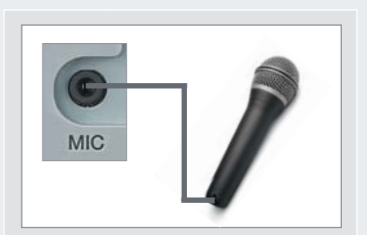


Microphone input and 16W audio*

With two built-in 8W high power speakers these wireless capable models are able to produce sound loud enough to fill medium to large rooms.

The microphone input accepts dynamic microphones and unbalanced signal lines. This allows you to address the class or meeting, even with the projector on standby.

*Compatible with dynamic microphones and unbalanced signal lines.



Advanced network functions

Campus notification system

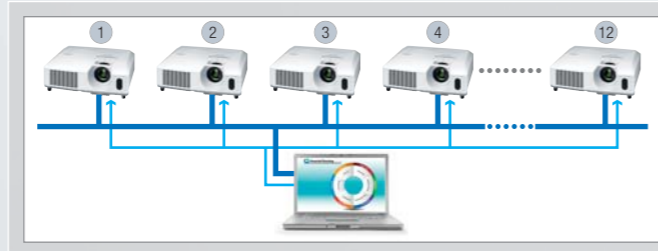
Send text messages and audio alert sounds simultaneously to all projectors on the network. It is an easy and efficient way to send campus wide notifications.



This function is not intended or guaranteed for the distribution of warning messages created by security systems.

Multi projectors*

You can also project the same image via up to 12 projectors simultaneously. This is useful for meetings and lectures in large venues to allow all participants easy view of a screen.



*Multiple projector function will be provided later by software updates. Video transfer speed may vary depending on number of projectors connected, and a wired network may offer faster rates.

Effective security

These projectors are equipped with a security bar, PIN-Lock, MyScreen Lock and Transition Detector functions.



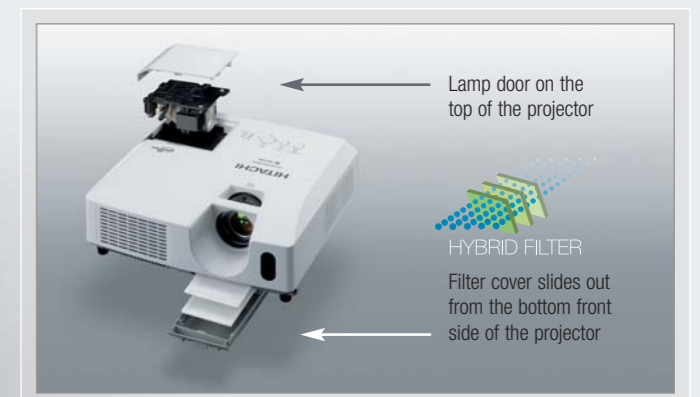
Reliability

Auto Eco Mode

This innovative mode increases the life of the lamp and reduces power consumption. The projector always starts up in Eco mode, even if it was in Normal mode when turned off.

Easy maintenance

The lamp door is on the top of the projector and the filter cover slides out from the front, ensuring maintenance and replacement can be completed easily and quickly. Lasting up to 6000 hours the Hybrid Filter requires less frequent maintenance and cleaning, extending the overall life of the projector.



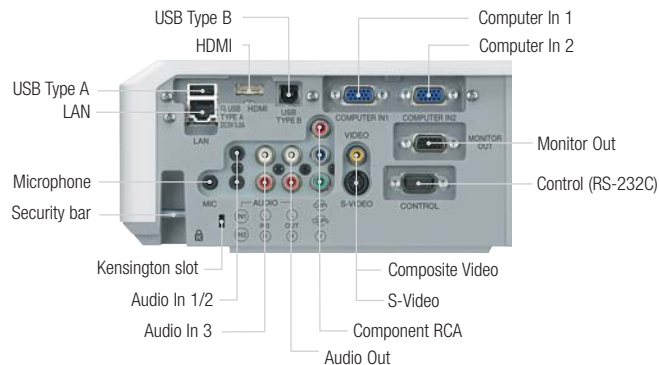
Versatile connections

The projectors provide a wealth of connectivity options. You can connect a variety of devices, to support all your projection needs. From DVD players and PCs to a wireless network, a Local Area Network or a simple mouse connection, Hitachi has done everything possible to ensure easy versatile connections that make your projector do more for you.



HDMI input

HDMI provides completely digital connections, ensuring that lessons and presentations can be delivered with the highest image quality.



TECHNICAL SPECIFICATIONS				
MODEL	CP-X2514WN	CP-X3014WN	CP-X4014WN	CP-WX3014WN
OPTICAL				
Resolution	XGA (1024 x 768)	XGA (1024 x 768)	XGA (1024 x 768)	WXGA (1280 x 800)
Light output (brightness) (ANSI Lumens)	2700 (Normal Mode)/1800 (Eco Mode)	3200 (Normal Mode)/2100 (Eco Mode)	4000 (Normal Mode)/2700 (Eco Mode)	3000 (Normal Mode)/2500 (Eco Mode)
Colour light output (colour brightness) (ANSI Lumens)	2700 (Normal Mode)/1800 (Eco Mode)	3200 (Normal Mode)/2100 (Eco Mode)	4000 (Normal Mode)/2700 (Eco Mode)	3000 (Normal Mode)/2500 (Eco Mode)
Contrast ratio	3000:1 (Presentation Mode)			
Lens	Manual focus, manual zoom x 1.2			
Lamp life	3000 hours (Normal Mode)/6000 hours (Eco Mode)*			
Diagonal display size	30-300" (76-762cm)			
Keystone correction	9:1 upward shift, fixed	9:1 upward shift, fixed	9:1 upward shift, fixed	49:1 upward shift, fixed
Distance to width ratio (-1)	1.5 (Wide), 1.8 (Tele)			
COMPATIBILITY				
Computer compatibility	IBM Compatible VGA, SVGA, XGA, WXGA, WXGA+, SXGA, SXGA+, UXGA, MAC 16"			
Video compatibility	SDTV: 480i, 480p, 576i, 576p, HDTV: 720p(@50/60Hz), 1080i(@50/60Hz), 1080p(@50/60Hz)			
FEATURES				
Speaker	16W Mono (8W x 2)			
Basic functions	Freeze, Magnifying, Blank, Auto adjustment, Search, Page up & down (for USB mouse function)			
Picture adjustments	Equalizing gamma correction, 2-3 pull down for NTSC, Progressive Scan, Noise reduction			
Advanced features	MyScreen, My Memory, My Button, My Text, My Source, blackboard/whiteboard mode, Daytime Mode, Input Source Naming (English), Resolution setting, Template, Closed caption (for NTSC & component 480i only), Audio pass through			
Power on & off	Quick On, Direct On, Auto Off			
Security systems	Security bar, PIN-Lock, MyScreen password, Keypad lock, Kensington slot, Transition detector, My Text lock, Security label			
Network	Campus Notification System, Configure and control projector via web browser, receive alerts via e-mail, projector management via SNMP, Crestron RoomView®, Scheduling, My Image, displaying text data transferred via the network, Command Control via network, AMX Device Discovery, PJ Link™, Network Bridge			
OSD languages	English, French, German, Spanish, Italian, Norwegian, Dutch, Japanese, Portuguese, Simplified Chinese, Traditional Chinese, Korean, Swedish, Russian, Finnish, Polish, Turkey, Arabic, Persian, Czech, Danish, Hungarian, Romanian, Slovenian, Croatian, Greek, Lithuanian, Estonian, Latvian, Thai, Portuguese(Brazil)			
CONNECTIONS				
Digital input	1 x HDMI (HDCP compliant)			
Computer input	2 x 15-pin Mini D-sub			
Monitor output	1 x 15-pin Mini D-sub			
Video input	1 x RCA for component, 2 x component D-sub (shared with analogue RGB), 1 x RCA for composite, 1 x Mini-DIN for S-Video			
Audio input	2 x Stereo mini jack, 1 x RCA (L/R) pair			
Microphone input	1 x Stereo mini jack			
Audio output	1 x pair RCA (L/R)			
USB Type A	1 x USB Type A (for PC-less presentation or wireless adaptor)			
USB Type B	1 x USB Type B (for USB display or USB mouse control)			
Wired network	1 x RJ-45			
Wireless network	Optional, IEEE801.11b/g/n ready			
Control	1 x 9-pin D-sub for RS-232C control			
POWER				
Power supply	100-120V/220-240V, auto switching			
Power consumption/Standby	310W/<1W (AC 220-240V)			
PHYSICAL				
Dimensions (W x H x D)	317 x 98 x 288mm (excluding feet and extrusions)			
Weight	3.5Kg			
Noise level	29dB (Eco Mode)/36dB (Normal Mode)			
Air filter	Hybrid (up to 6000 hours)			
MISCELLANEOUS				
	Indicator lights (lamp, temp, power), Ceiling mount image, Rear projection image, Serial number label on side, MAC PC support: PJ Control software, MAC address label on side, LiveViewer software			
ACCESSORIES SUPPLIED				
	Remote control with batteries (HL02771), Computer cable, Power cord, Lens cap, Security label, User manual (detail & concise), Application software for LAN display			
OPTIONAL ACCESSORIES				
Replacement lamp/lamp Wattage	DT01021/210W			
USB wireless adaptor	USB-WL-11N			
WARRANTY				
Projector warranty/lamp warranty	6 months or 6000 hours**			

HITACHI DIGITAL MEDIA, Hitachi Europe Ltd, Whitebrook Park, Lower Cookham Road, Maidenhead, Berkshire SL6 8YA UNITED KINGDOM

Tel: +44 (0)1628 585 000 Fax: +44 (0)1628 585 163 www.hitachidigitalmedia.com

*The stated lamp and filter life refers to the average life expected in ideal operating conditions with usage in accordance with the manual. The majority of, but not all lamps and filters should achieve this figure. **A free replacement lamp will be issued if the original lamp is less than 6 months old and it has only been used for less than the hours stated on lamp warranty from the date of first use. Where a lamp fails and a replacement lamp is taken under warranty, the duration of the warranty for the replacement lamp shall be the remainder of the original warranty period only. HDMI, the HDMI logo and High-Definition Multimedia Interface are trademarks or registered trademarks of HDMI Licensing LLC. Crestron® and RoomView™ are registered trademarks or trademark of Crestron Electronics, Inc. The specification above and photography is for reference only and may be subject to change.