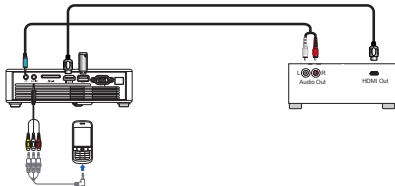
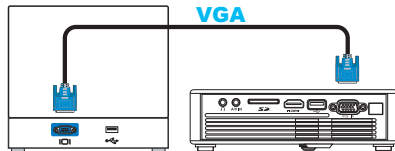


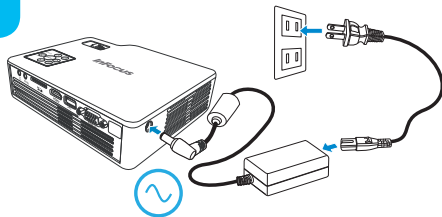
# IN1144 Touchboards

205 Westwood Ave, Long Branch, NJ 07740  
Phone: 866-94 BOARDS (26273) / (732)-222-1511  
Fax: (732)-222-7088 | E-mail: sales@touchboards.com

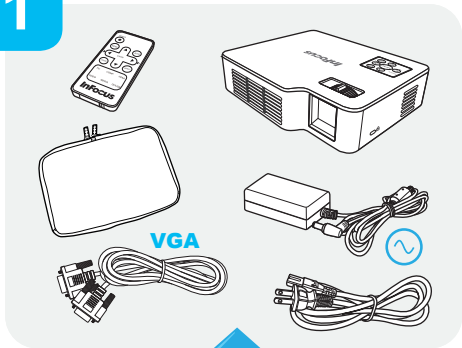
2



3



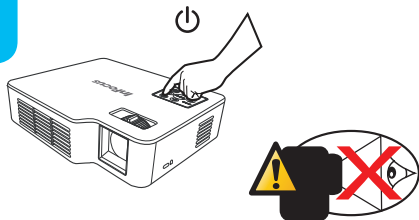
1



?

[www.infocus.com/support](http://www.infocus.com/support)

4



Read the Safety information before operating this product.

Lire attentivement les informations de sécurité avant d'utiliser ce produit.

Lesen Sie vor Inbetriebnahme des Geräts die Sicherheitshinweise.

Lea las instrucciones de seguridad antes de operar el producto.

Prima di utilizzare questo prodotto, leggere le informazioni sulla sicurezza.

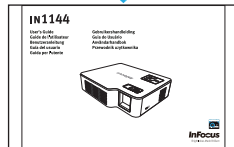
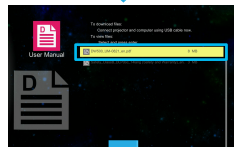
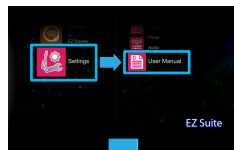
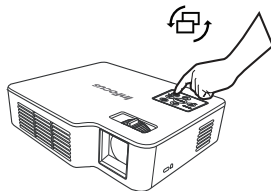
Lees de veiligheidsinformatie alvorens dit product te gebruiken.

Ler a informação de Segurança antes de colocar este produto em funcionamento.

Läs säkerhetsinformationen innan du använder den här produkten.

Przed rozpoczęciem używania tego produktu należy przeczytać Informacje dotyczące bezpieczeństwa.

5



Regulatory Model: IN1144  
Part Number: 4D.10410.001



**InFocus**  
Bright Ideas Made Brilliant