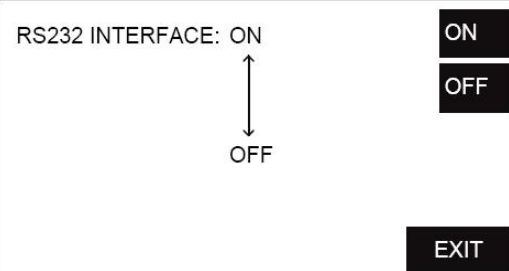
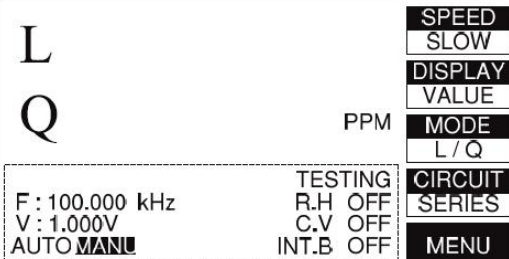
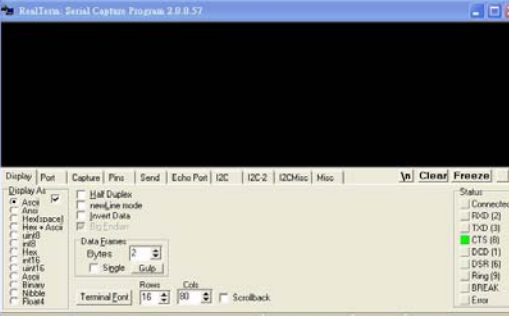
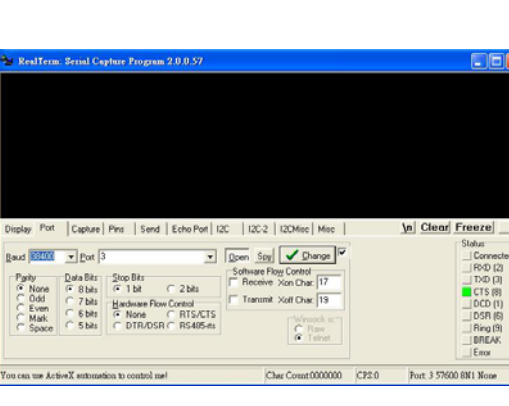
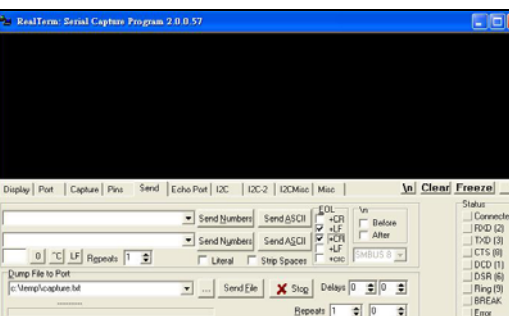


How to get LCR-800 series ONLINE by using the Real-Term

LCR-800 series configuration:

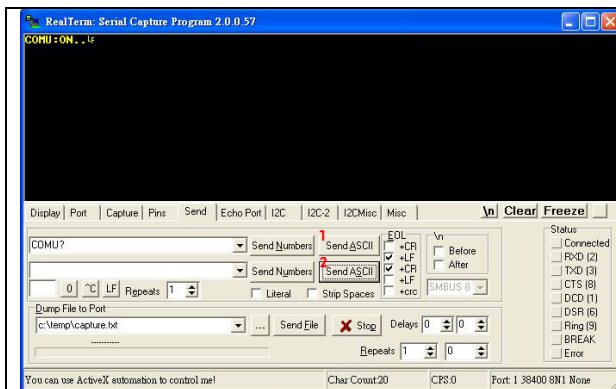
	<p>Make sure the RS-232 interface is ON</p> <p>(Operation by Key-pad)</p> <p>MENU → SORT → RS232 → ON → EXIT</p>
	<p>Make sure the LCR-800 series is under MANU trigger.</p> <p>(Operation by Key-pad)</p> <p>START (long press by 1~2s)</p>

Real-term Configuration:

	<p>Display configuration</p> <p>Ascii</p>
	<p>Port configuration</p> <p>Baud : 38400</p> <p>Port : depend on current setting</p> <p>Parity : None</p> <p>Bata Bits : 8 bits</p> <p>Stop Bits : 1 bit</p> <p>Hardware Flow Control : None</p> <p>[NOTE]</p> <p>After complete the above setting, please press "Change" to confirm.</p>
	<p>Send (message terminator) configuration</p> <p>EOL : LFCR</p>

How to get LCR-800 series ONLINE by using the Real-Term

Get the LCR-800 series ONLINE



Send Command:

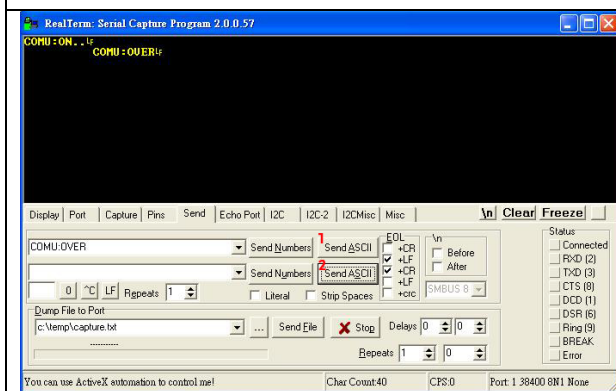
COMU? +LF +CR

Get Respond:

COMU:ON..

Notice:

+LF +CR are message terminators and means pressing the “Send ASCII” in sequence (1 / 2).



Send Command:

COMU:OVER +LF +CR

Get Respond:

COMU:OVER

Notice:

+LF +CR are message terminators and means pressing the “Send ASCII” in sequence (1 / 2).

After sending the above commands successfully, LCR-800's display should become

RS232 ONLINE

Notice: The sending commands should be all “Capital”.



205 Westwood Ave
Long Branch, NJ 07740
1-877-742-TEST (8378)
Fax: (732) 222-7088
salesteam@Equipment.NET