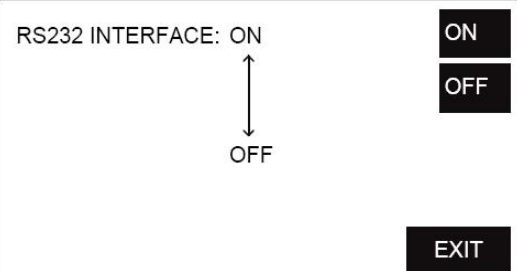
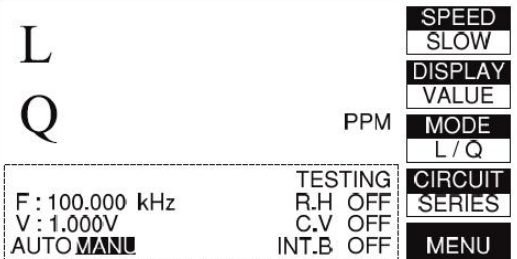



# How to get LCR-800 series ONLINE by using the Hyper-terminal

## LCR-800 series configuration:

	<p>Make sure the RS-232 interface is ON</p> <p>(Operation by Key-pad)</p> <p><b>MENU → SORT → RS232 → ON → EXIT</b></p>
	<p>Make sure the LCR-800 series is under MANU trigger.</p> <p>(Operation by Key-pad)</p> <p><b>START (long press by 1~2s)</b></p>

## Hyper-terminal Configuration:

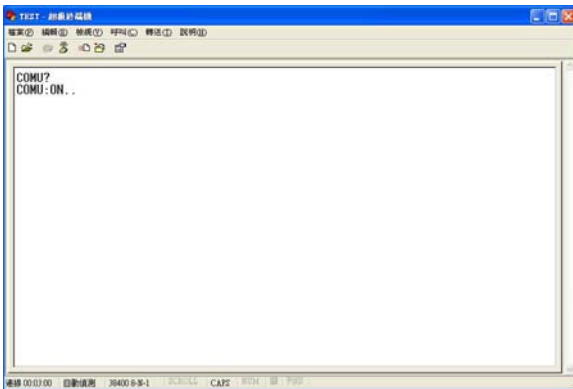
	<p>COM port configuration</p> <p>Baud-rate : 38400</p> <p>Data bit : 8</p> <p>Parity : NONE</p> <p>Stop bit : 1</p> <p>Flow control : NONE</p>
--	--

Follow the numbers in the picture to complete the rest setting of Hyper-terminal


--

# How to get LCR-800 series ONLINE by using the Hyper-terminal

## Get the LCR-800 series ONLINE



Send Command:

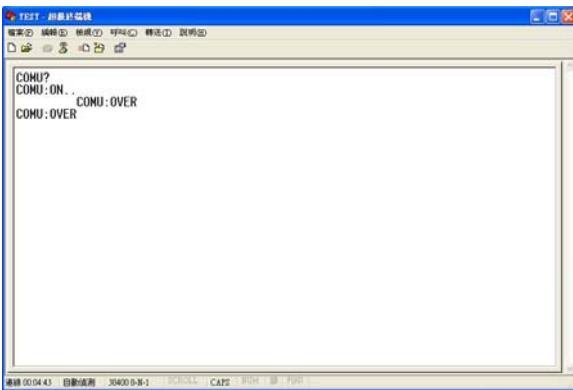
**COMU? <^J^M>**

Get Respond:

**COMU:ON..**

**Notice:**

**<^J^M>** is message terminator and means pressing the Ctrl J & Ctrl M by keyboard.



Send Command:

**COMU:OVER <^J^M>**

Get Respond:

**COMU:OVER**

**Notice:**

**<^J^M>** is message terminator and means pressing the Ctrl J & Ctrl M by keyboard.

After sending the above commands successfully, LCR-800's display should become

**RS232 ONLINE**

Notice: The sending commands should be all "Capital".



205 Westwood Ave  
Long Branch, NJ 07740  
1-877-742-TEST (8378)  
Fax: (732) 222-7088  
salesteam@Tequipment.NET