

Connectors, Adapters, and Tools

Model	Name	Use With:
213-CON	Analog Output Connector	Instruments with 12-pin analog connectors
237-BAN-3A	Triax to Banana Plug	4200-SCS, 7072, 7072-HV, DMMs
237-BNC-TRX	3-Lug Female Triax to Male BNC Connector with guard disconnected	237, 4200-SCS, 6517A, 6517B, 7078-TRX cables
237-TRX-BAR	3-Lug Triax Female to Female Barrel Adapter	2635A, 2636A, 4200-SCS, Triax interconnect
237-TRX-NG	Triax Male-Female Adapter with guard disconnected	237, 6517A, 6517B, 7072, 7072-HV
237-TRX-T	3-slot Male to Dual 3-Lug Female Triax Tee Adapter	4200-SCS, 7072, 7072-HV, 7078-TRX cables
237-TRX-TBC	3-Lug Female Triax Bulkhead Connector	7072, 7072-HV, 7078-TRX cables
2182-325A	Silver Solder for use with 2182-KIT	2182A
2182-KIT	Low-Thermal Connector with Strain Relief (LEMO)	2182A, SC-93
2188	Low-Thermal Calibration Shorting Plug	2182A
2499-DIGIO	Digital I/O Expansion Module	SourceMeter instruments
2500INT-SMA	SMA Connector	2500INT integrating sphere
2500INT-FC/PC	FP/PC Connector	2500INT integrating sphere
2500INT-FC/APC	FP/APC Connector	2500INT integrating sphere
2600-KIT	Screw Terminal Connector with Strain Relief and Cover	2601A, 2602A (2 needed), 2611A, 2612A (2 needed)
2600-TRIAX	3-Lug Triax Adapter	2601A, 2602A (2 needed), 2611A, 2612A (2 needed)
3706-BKPL	Analog Backplane Extender Board	Series 3700, Series 3700A
3720-ST	Screw Terminal Block	3720
3721-ST	Screw Terminal Block	3721
3723-ST	Screw Terminal Block	3723
3723-ST-1	Screw Terminal Block	3723
3724-ST	Screw Terminal Block	3724
3730-ST	Screw Terminal Block	3730
3731-ST	Screw Terminal Block	3731
3740-ST	Screw Terminal Block	3740
3750-ST	Screw Terminal Block	3750
3790-KIT50-R	50-pin Female D-sub Connector Kit	3721, 3730, 3731, 3740, 3750
3791-CIT	Contact Insertion and Extraction Tool	3720, 3722, 3723
3791-KIT78-R	78-pin Female D-sub Connector Kit	3720, 3723, 3724, 3732
3792-KIT104-R	104-pin Male D-sub Connector Kit	3722
3792-KIT104-R/F	104-pin Female D-sub Connector Kit	3722
4851	BNC Shorting Plug	Instruments with BNC connectors
6171	3-slot Male to 2-Lug Female Triax Adapter	2-lug triax connectors
6172	2-slot Male to 3-Lug Female Triax Adapter	7065, 2500INT
7001-PNL	Metal Plate	7001
7011-KIT-R	Female 96-pin Connector Kit	7011-C, 7012-C, 7013-C, 7015-C, 7018-C
7011-ST	Extra Screw Terminal Board	7011-S
7012-ST	Extra Screw Terminal Board	7012-S
7013-ST	Extra Screw Terminal Board	7013-S

Model	Name	Use With:
7014-ST	Extra Screw Terminal Board	7014
7015-ST	Extra Screw Terminal Board	7015-S
7018-ST	Extra Screw Terminal Board	7018-S
7072-TRT	Triax Removal Tool	707B, 708B
7074-CIT	Contact Extraction Tool	7152-KIT, 7152-MTR
7074-HCT	Hand Crimping Tool	7152-KIT, 7152-MTR
7078-CIT	Contact Insertion/Extraction Tool	7078-KIT, 7078-MTR, 7152-KIT, 7152-MTR
7078-HCT	Hand Crimping Tool for 7078-KIT, 7169-KIT	7078-KIT
7078-KIT	Connector Kit	7071, 7071-4, 7074-D, 7078-MTR
7078-MTR	Mass Terminated Receptacle, Bulkhead Mount	7071, 7071-4, 7078-KIT, 7078-MTC
7078-TRX-BNC	3-slot Male Triax to BNC Adapter	486, 487, 4210-CVU, 4801, 6514, 6517A, 6517B, 7072, 7072-HV
7078-TRX-GND	3-slot Male Triax to BNC Adapter (guard removed)	237, 4200-SCS, 4801, 6517A, 6517B, 7051, 7072, 7072-HV, Series 2600A
7078-TRX-TBC	3-Lug Female Triax Bulkhead Connector w/Cap	7078-TRX cables
7152-HCT	Hand Crimp Tool for 7152-KIT, 7152-MTR	7152-KIT, 7152-MTR
7152-KIT	6-Position M-Series Plug w/Contacts	7152, 7152-MTR
7152-MTR	6-Position M-Series Receptacle w/Socket	7152, 7152-KIT, 7152-MTC-2, 7152-MTC-10
7703-306A	DB50 Male Connector Kit	7701, 7703, 7705, 7709
7709-308A	DB25 Male Connector Kit	7701, 7707, 7709, Series 2600A
7712-SMA-N	Female SMA to Male N-Type Adapter	7711, 7712
7755	50Ω Feed-Through Terminator	RG 58 cable, 776, 3390
7788	50-pin D Subconnector Kit	7703, 7705, 77XX, modules with D sub connectors
7789	50-pin Male and 25-pin Male D-Shell Connector Kit	7701, 7709
7790	50-pin Male, 50-pin Female, and 25-pin Male IDC D-Shell Connector Kit	7701, 7703, 7705, 7707, 7709
8610	Low Thermal Shorting Plug	2000, 2001, 2002, 2010
8620	4-Wire DMM Shorting Plug	2000, 2001, 2002, 2010, 2015, 2016, Series 2400, Series 2700, Series 3700, Series 3700A
8680	RTD Probe Adapter	2001, 2002, 2010
BG-18	Dual Banana to BNC Coaxial Adapter	230, Series 2000, Series 2400, 2700, 2750
CAP-18	Protective Shield/Cap	BNC, 2-lug triax connectors
CAP-31	Protective Shield/Cap	3-lug triax connectors
CS-400	DB25 Male Solder Cup	CA-126-1 cable, 213
CS-458	Interlock Connector Kit	6517-ILC-3
CS-565	BNC Barrel, 4200-SCS	BNC interconnect
CS-630	3-Lug Female Triax Bulkhead Connector	6487, 6517A, 6517B
CS-631	3-Lug Male Triax Cable Mount Connector	4200-SCS, SC-22 cable
CS-701	BNC Tee Adapter (Female-Male-Female)	4200-SCS
CS-719	3-Lug Triax Jack Receptacle	4200-SCS

1.888.KEITHLEY (U.S. only)

www.keithley.com

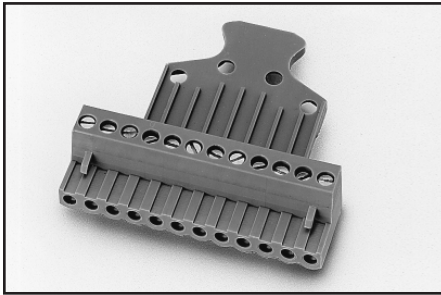
KEITHLEY

A GREATER MEASURE OF CONFIDENCE

Connectors, Adapters, and Tools

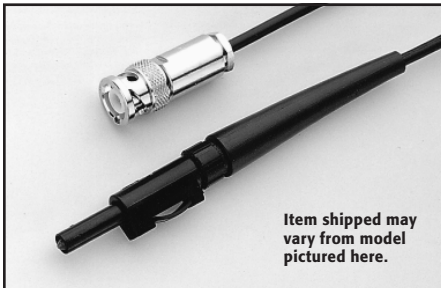
Model	Name	Use With:
CS-846	Screw Terminal Test Lead Connector	230X, 2510, 2510-AT
CS-970	High Voltage Bulkhead Connector	248, 248-SHV cable
CS-1247	SMA Female to BNC Male Adapter	4200-SCS
CS-1249	SMA Female to SMB Plug Adapter	4200-SCS
CS-1251	BNC Female to SMB Plug Adapter	4200-SCS
CS-1252	SMA Male to BNC Female Adapter	4200-SCS
CS-1281	SMA Female to SMA Female Adapter	4200-SCS
CS-1305	Interlock Connector	6517B
CS-1382	Female MMBX Jack to Male SMA Plug Adapter	4200-SCS

Model	Name	Use With:
CS-1390	Male LEMO Triax to Female SMA Adapter	4200-SCS
CS-1391	SMA Tee Adapter (Female-Male-Female)	4200-SCS
CS-1423-3	Miniature Mating Connector	2635A, 2636A
CS-1479	SMA Male to BNC Male Adapter	4200-SCS
CS-1592-2	Screw Terminal Plug	2651A
CS-1626-2	Screw Terminal Receptacle	2651A
CS-1629-8	Screw Terminal Connector	2651A
CS-1638-12	Rear Panel Mounting Connector	Series 2200
TL-24	SMA Torque Wrench	4200-SCS, System 46, System 46T



Model 213-CON Analog Output Connector: Quick disconnect analog output connector for Model 213 Quad Voltage Source. Screw terminals provided for connection of test leads.

For use with: Instruments with 12-pin analog connectors



Model 237-BAN-3A Triax to Banana Plug: Triax cable center conductor terminated in a safety banana plug (guard and shield open). For connecting DMMs and other banana jack instruments to a matrix or fixture.

For use with: 4200-SCS, 7072, 7072-HV, DMMs



Model 237-BNC-TRX: Male BNC to 3-lug female triax adapter (guard disconnected). Terminates triax cable in BNC plug. High voltage rating for use with 237 and 7072-HV.

For use with: 237, 4200-SCS, 6517A, 6517B, 7078-TRX cables



Model 237-TRX-BAR: 3-lug triax barrel (female to female) for use with triax interconnect.

For use with: 2635A, 2636A, 4200-SCS, triax interconnect



Model 237-TRX-NG: 3-slot triax to 3-lug female triax adapter (guard removed) for non-guarded measurements. High voltage rating for use with 237, 7072-HV, etc.

For use with: 237, 6517A, 6517B, 7072, 7072-HV



Model 237-TRX-T: 3-slot male to dual 3-lug female triax tee adapter for use with 7078-TRX cables and 7072/7072-HV Semiconductor Matrix Cards. High voltage rating for use with Models 237 SMU and 6517B Electrometer.

For use with: 237, 4200-SCS, 6517A, 6517B, 7072, 7072-HV, 7078-TRX cables

1.888.KEITHLEY (U.S. only)

www.keithley.com

KEITHLEY

A GREATER MEASURE OF CONFIDENCE

Connectors, Adapters, and Tools

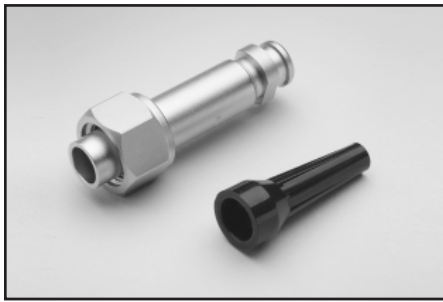


Model 237-TRX-TBC: 3-lug female triax bulkhead connector with cap for assembly of custom panels and interface connections. High voltage rating for use with 237, 7072-HV, etc. Uses miniature coax cable, not triax cable, at soldered end. Bulkhead is outer shield.

For use with: 7072, 7072-HV, 7078-TRX cables

Model 2182-325A: Silver solder for making connections in experiments with the Model 2182A. 20 ft roll.

For use with: 2182A



Model 2182-KIT Low-Thermal Connector with Strain Relief: Connector kit for building a custom input cable for the Model 2182A Nanovoltmeter. Includes a low-thermal (LEMO) connector and a strain relief.

For use with: 2182A, SC-93



Model 2188 Low-Thermal Calibration Shorting Plug: A low-resistance, low-thermal shorting plug required to calibrate the Model 2182A Nanovoltmeter. Made of a LEMO connector with its pin connectors shorted together using copper wire and Sn/Ag4 silver solder.

For use with: 2182A



Model 2499-DIGIO: Digital I/O expansion module that plugs onto the DB-9 connector of a SourceMeter® instrument. Expands the three digital I/O lines of the SourceMeter to 16 lines. The SOT, EOT/BUSY, 5V, GND, and Interlock signals are passed through.

Services Available: 1-year factory warranty extended to 3 years from date of shipment

For use with: SourceMeter Instruments

Model 2500INT-FC/APC: FC/APC connector for 2500-INT Integrating Sphere.

For use with: 2500-INT



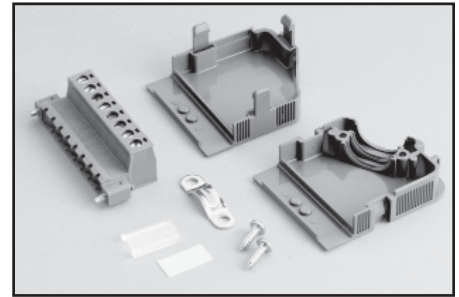
Model 2500INT-FC/PC: FC/PC connector for 2500-INT Integrating Sphere.

For use with: 2500-INT



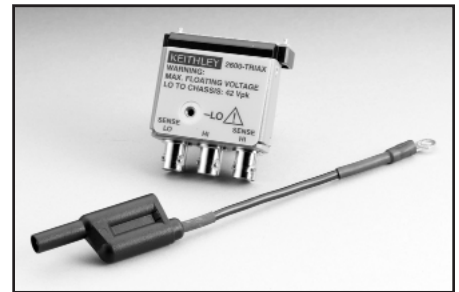
Model 2500INT-SMA: SMA connector for 2500-INT Integrating Sphere.

For use with: 2500-INT



Model 2600-KIT: Extra screw terminal connector, strain relief, and cover for a single SourceMeter channel (two needed for use with Models 2602A and 2612A).

For use with: 2601A, 2602A, 2611A, 2612A



Model 2600-TRIAX: Triax adapter for a single Series 2600A SourceMeter channel (two needed for use with Models 2602A and 2612A). For use with standard 3-lug triax cables.

For use with: 2601A, 2602A, 2611A, 2612A

1.888.KEITHLEY (U.S. only)

www.keithley.com

KEITHLEY

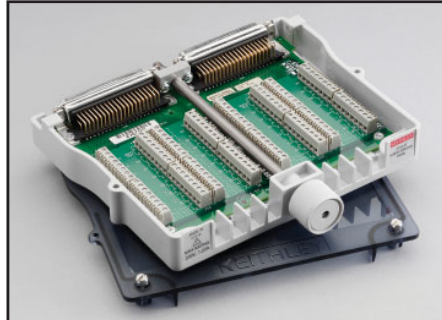
A GREATER MEASURE OF CONFIDENCE

Connectors, Adapters, and Tools



Model 3706-BKPL: Analog backplane extender board, 15-pin D-sub to terminal block.

For use with: Series 3700, Series 3700A



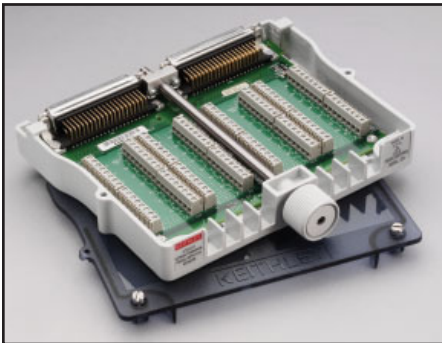
Model 3723-ST: Screw Terminal Block. Accessory for Model 3723 for two-pole applications.

For use with: 3723



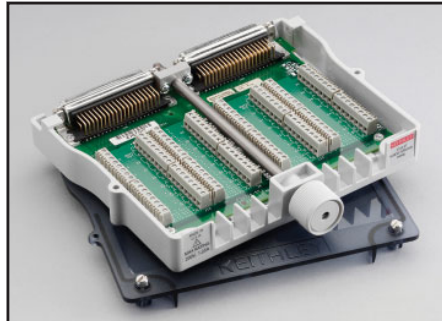
Model 3730-ST: Screw Terminal Block.

For use with: 3730



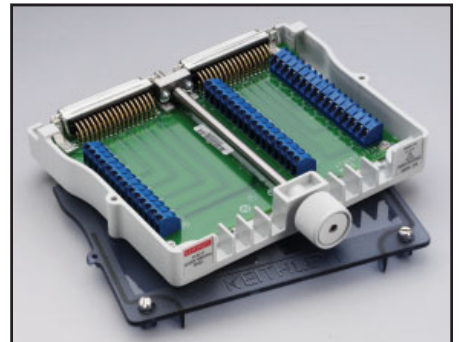
Model 3720-ST: Screw Terminal Block. Required with the Model 3720 for automatic CJC thermocouple measurements.

For use with: 3720



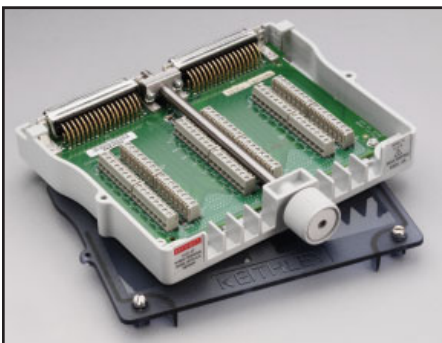
Model 3723-ST-1: Screw Terminal Block. Accessory for the Model 3723 for single-pole applications.

For use with: 3723



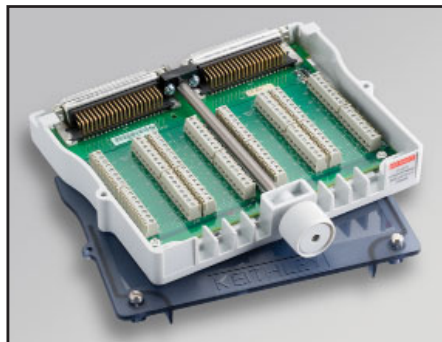
Model 3731-ST: Screw Terminal Block.

For use with: 3731



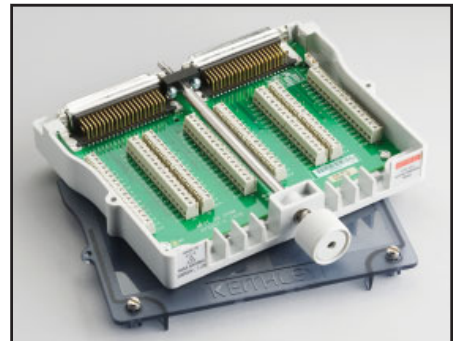
Model 3721-ST: Screw Terminal Block. Required with the Model 3721 for automatic CJC thermocouple measurements.

For use with: 3721



Model 3724-ST: Screw Terminal Block.

For use with: 3724



Model 3732-ST-C: Screw Terminal Block. Enables screw terminal access and additional matrix sizes including: quad 4x28 (1W), dual 4x28 (2W), single 4x56 (2W), dual 4x56 (1W), and single 4x112 (1W).

For use with: 3732

1.888.KEITHLEY (U.S. only)

www.keithley.com

KEITHLEY

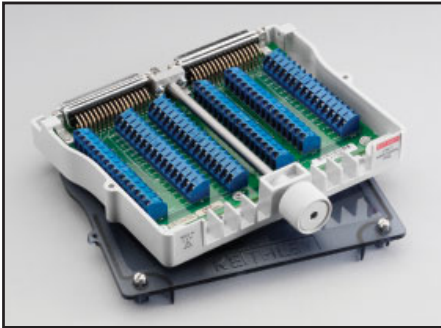
A GREATER MEASURE OF CONFIDENCE

Connectors, Adapters, and Tools



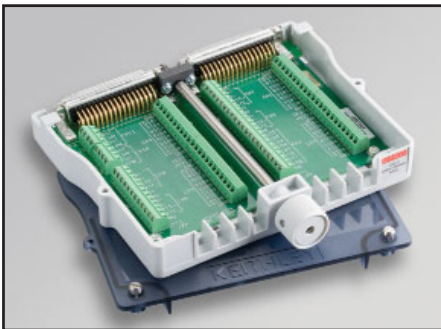
Model 3732-ST-R: Screw Terminal Block. Enables screw terminal access and additional matrix sizes including: dual 8×28 (1W), single 8×28 (2W), and single 16×28 (1W).

For use with: 3732



Model 3740-ST: Screw Terminal Block.

For use with: 3740



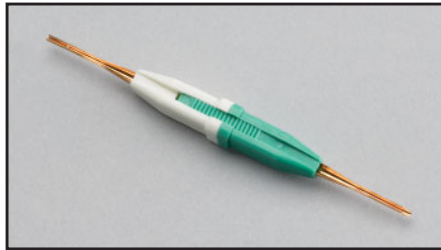
Model 3750-ST: Screw Terminal Block.

For use with: 3750



Model 3790-KIT50-R: 50-pin female D-sub connector kit that contains two female D-sub connectors with housings and 100 solder cup contacts. Use for assembly of custom cable and harnesses compatible with Series 3700A plug-in cards.

For use with: 3721, 3730, 3731, 3740, 3750



Model 3791-CIT: Contact insertion and extraction tool for assembly and maintenance of Series 3700A D-sub Connector kits.

For use with: 3791-KIT78-R, 3791-KIT104-R



Model 3791-KIT78-R: 78-pin female D-sub connector kit that contains two female D-sub connectors and 156 solder-cup contacts. Use for assembly of custom cable and harnesses compatible with Series 3700A plug-in cards.

For use with: 3720, 3723, 3724, 3732



Model 3792-KIT104-R: 104-pin male D-sub connector kit that contains two male D-sub connectors with housings and 208 solder-cup contacts. Use for assembly of custom cable and harnesses compatible with Series 3700A plug-in cards.

For use with: 3722



Model 3792-KIT104-R/F: 104-pin female D-sub connector kit that contains two female D-sub connectors with housings and 208 solder-cup contacts. Use for assembly of custom cables, harnesses, and DUT interface compatible with Series 3700A plug-in cards.

For use with: 3722



Model 4851: BNC shorting plug.

For use with instruments with BNC connectors

1.888.KEITHLEY (U.S. only)

www.keithley.com

KEITHLEY

A GREATER MEASURE OF CONFIDENCE

Connectors, Adapters, and Tools



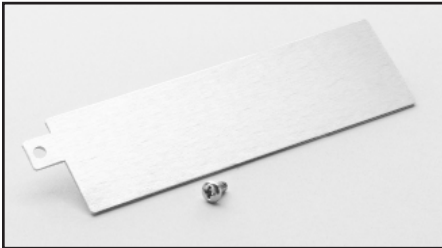
Model 6171: 3-slot male to 2-lug female triax adapter.

For use with: 2-lug triax connectors



Model 6172: 2-slot male to 3-lug female triax adapter. For use in adapting Models 7065 and 250INT inputs to 3-slot triax plugs.

For use with: 7065, 250INT



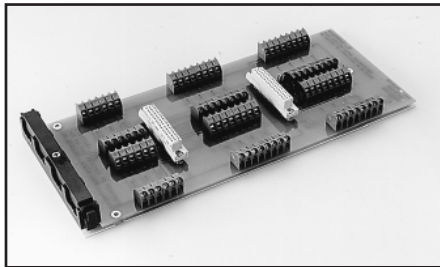
Model 7001-PNL: Metal plate used to cover an empty card slot on the rear panel of a Model 7001.

For use with: 7001



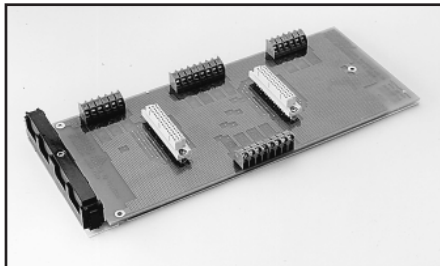
Model 7011-KIT-R: 96-pin female DIN connector with solder eyelets and strain relief. This kit can be used for assembly of custom cables to connect with the connectors on the 7011-C, 7012-C, 7013-C, 7015-C, and 7018-C switch cards. Also connects with the 7011-MTR bulk-head mount male connector.

For use with: 7011-C, 7012-C, 7013-C, 7015-C, 7018-C



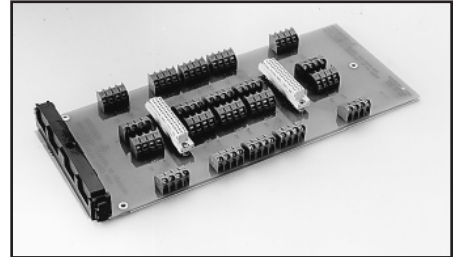
Model 7011-ST: Extra quick disconnect screw terminal board. One 7011-ST is included with each 7011-S.

For use with: 7011-S



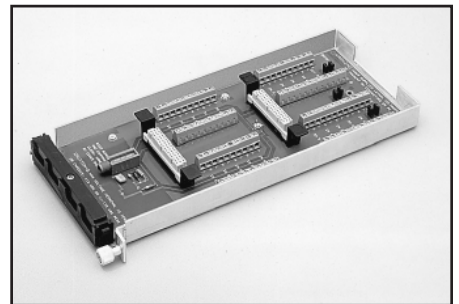
Model 7012-ST: Extra quick disconnect screw terminal board. One 7012-ST is included with each 7012-S.

For use with: 7012-S



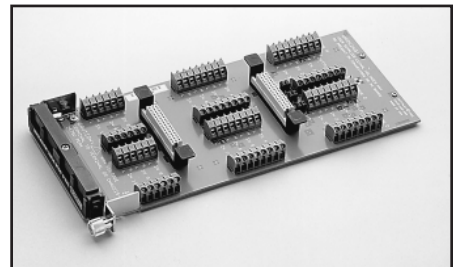
Model 7013-ST: Extra quick disconnect screw terminal board. One 7013-ST is included with each 7013-S.

For use with: 7013-S



Model 7014-ST: Extra quick disconnect isothermal screw terminal board with cold junction sensor. One 7014-ST is included with each 7014.

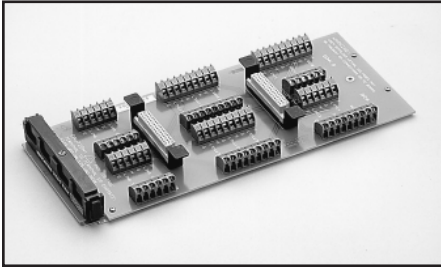
For use with: 7014



Model 7015-ST: Extra quick disconnect screw terminal board. One 7015-ST is included with each 7015-S.

For use with: 7015-S

Connectors, Adapters, and Tools



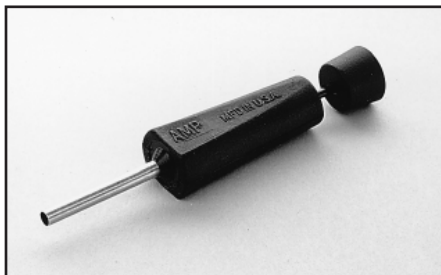
Model 7018-ST: Extra quick disconnect screw terminal board. One 7018-ST is included with each 7018-S.

For use with: 7018-S



Model 7072-TRT: Triax removal tool used to connect or disconnect triax style connectors when clearance is limited making it difficult to mate or unmate a connector with your fingers.

For use with: 707B, 708B



Model 7074-CIT: Contact extraction tool for removal of contacts from cables and connectors.

For use with: 7152-KIT, 7152-MTR



Model 7074-HCT: Contact crimping pliers for assembly of cables and connectors.

For use with: 7152-KIT, 7152-MTR



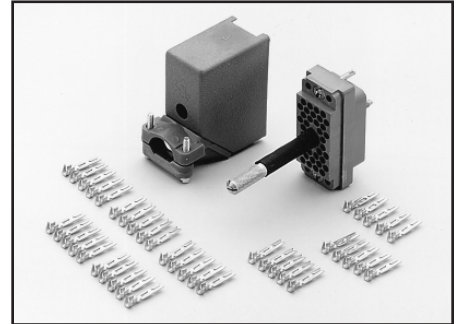
Model 7078-CIT: Contact insertion and extraction tool for assembly and maintenance of 7078-MTC cables and connectors.

For use with: 7078-KIT, 7078-MTR, 7152-KIT, 7152-MTR



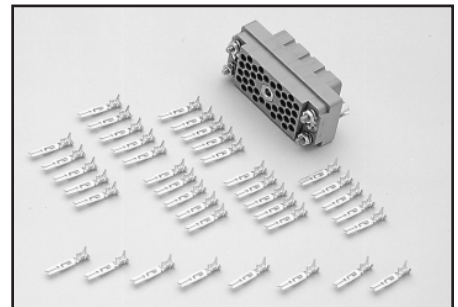
Model 7078-HCT: Contact crimping pliers for assembly of cables and connectors using 7078-MTR or 7078-KIT.

For use with: 7078-KIT



Model 7078-KIT: 38-pin male plug assembly with strain relief and 40 contacts for assembly of custom cable and harnesses compatible with Model 7071 8x12 Matrix Card, Model 7071-4 Dual 4x12 Matrix Card, and 7078-MTR Mass Terminated Receptacle. Requires 7078-HCT; recommend 7078-CIT.

For use with: 7071, 7071-4, 7074-D, 7078-MTR



Model 7078-MTR: 38-pin female bulkhead mount receptacle with 40 contacts for custom interface and patch panels compatible with 7078-MTC and 7078-KIT. Requires 7078-HCT; recommend 7078-CIT.

For use with: 7078-KIT, 7078-MTC, 7071, 7071-4



Model 7078-TRX-BNC: 3-slot male triax to BNC adapter for use with 7072 Semiconductor Matrix Card and 4801 cables.

For use with: 486, 487, 4210-CVU, 4687, 4801, 6514, 6517A, 6517B, 7072, 7072-HV

1.888.KEITHLEY (U.S. only)

www.keithley.com

KEITHLEY

A GREATER MEASURE OF CONFIDENCE

Connectors, Adapters, and Tools



Model 7078-TRX-GND: 3-slot male triax to female BNC adapter (guard removed) for adapting non-guarded measurements to the Model 237 SMU, 7072, or 7072-HV Semiconductor Matrix Cards, or 8006 or 8008 Test Fixtures.

For use with: 237, Series 2600A, 4801, 6517A, 6517B, 7051, 7072, 7072-HV



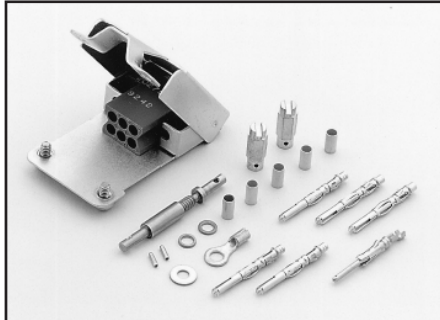
Model 7078-TRX-TBC: 3-lug female triax bulkhead connector with cap for assembly of custom panels and interface connections.

For use with: 7078-TRX Cables



Model 7152-HCT: Contact crimping pliers for assembly of cables and connector using 7152-MTR or 7152-KIT.

For use with: 7152-KIT, 7152-MTR



Model 7152-KIT: 6-pin plug assembly with strain relief and contacts for assembly of custom cable and harnesses compatible with Model 7152 4x5 Low Current Matrix Card and 7152-MTR Mass Terminated Receptacle. Requires 7152-HCT recommend 7074-CIT and 7074-HCT.

For use with: 7152, 7152-MTR



Model 7152-MTR: 6-pin bulkhead mount receptacle with contacts for custom interface and patch panels compatible with 7152-MTC and 7152-KIT. Requires 7152 HCT; recommend 7074-CIT and 7074-HCT.

For use with: 7152, 7152-KIT, 7152-MTC-2, 7152-MTC-10



Model 7703-306A: DB50 male connector kit (solder cup) with shell.

For use with: 7701, 7703, 7705, 7709



Model 7709-308A: DB25 male connector kit (solder cup) with shell.

For use with: 7701, 7707, 7709, Series 2600A



Model 7712-SMA-N: Female SMA to male N-type adapter.

For use with: 7711, 7712

1.888.KEITHLEY (U.S. only)

www.keithley.com

KEITHLEY

A GREATER MEASURE OF CONFIDENCE

Connectors, Adapters, and Tools



Model 7755 50Ω Feed-Through Terminator: BNC-to-BNC adapter for terminating RG58 cable in its characteristic impedance. VSWR <1.1, DC–250MHz.

For use with: RG58 Cable, 776, 3390



Model 7788: 50-pin D subminiature connector kit. To mate with 50-pin connector on Model 7703 and 7705.

For use with: 7703, 7705, 77xx modules with D-sub connectors



Model 7789: 50-pin/25-pin (both male) D-Shell Kit (one of each) for 7701 or 7709 Integra modules (mating connectors are supplied with these modules when purchased).

For use with: 7701, 7709



Model 7790: 50 pin male, 50 pin female, 25 pin male IDC D-Shell Connector Kit (one each).

For use with: 7701, 7703, 7705, 7707, or 7709 Integra modules



Model 8610 Low Thermal Shorting Plug: For calibration lab use, this plug provides a very low thermal offset short at front or rear inputs.

For use with: 2000, 2001, 2002, 2010



Model 8620 Four-Wire DMM Shorting Plug: Provides a low resistance 4-wire short to both observe and cancel DMM offset resistances and voltages to improve measurement accuracies.

For use with: 2000, 2001, 2002, 2010, 2015, 2016, Series 2400, Series 2700, Series 3700, Series 3700A



Model 8680 RTD Probe Adapter: Provides a means of connecting RTD probes terminated in either a 4-wire instrumentation connector or bare wires to safety input jacks on a 0.5 inch spacing. Use with Models 8681, 8693, 8695, or 8696.

For use with: 2001, 2002, 2010



BG-18: Dual banana to BNC coaxial adapter for adapting connection on instrument with dual banana jack.

For use with: 230, Series 2000, Series 2400, 2700, 2750



CAP-18: Protective shield/cap for BNC connectors.

For use with: BNC connectors



CAP-31: Protective shield/cap for 3-lug triax connectors.

For use with: 3-lug triax connectors

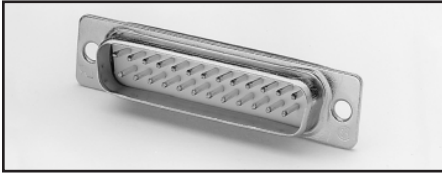
1.888.KEITHLEY (U.S. only)

www.keithley.com

KEITHLEY

A GREATER MEASURE OF CONFIDENCE

Connectors, Adapters, and Tools



CS-400: DB25 male solder cup.
For use with: C126-1 cable, 213



CS-458: Interlock connector kit to mate with 6517-ILC-3.
For use with: 6517-ILC-3



CS-565: Female BNC to female BNC adapter with 50Ω nominal impedance.
For use with: 4200-SCS, BNC interconnect



CS-630: 3-lug female triax bulkhead connector for soldered connection. Mates with CS-631.
For use with: Fixtures, 6487, 6517A, 6517B



CS-631: 3-slot male triax cable mount connector for use with SC-22 cable. Mates to Models 237, 486, 487, 7072, and 8006.
For use with: 4200-SCS, SC-22 cable



CS-701: BNC tee adapter (female, male, female).
For use with: 4200-SCS



CS-719: 3-lug triax jack receptacle.
For use with: 4200-SCS



CS-846: Eight position connector with screw terminals for connection to test leads.
For use with: 230x, 2510, 2510-AT



CS-970: High voltage bulkhead connector.
For use with: 248, 248-SHV cable



CS-1247: SMA female to BNC male adapter
For use with: 4200-SCS



CS-1249: SMA female to SMB plug adapter
For use with: 4200-SCS



CS-1251: BNC female to SMB plug adapter
For use with: 4200-SCS



CS-1252: SMA male to BNC female adapter
For use with: 4200-SCS



CS-1281: SMA female to SMA female adapter
For use with: 4200-SCS

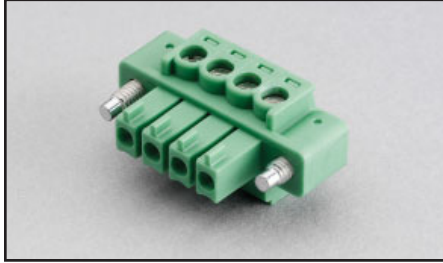
1.888.KEITHLEY (U.S. only)

www.keithley.com

KEITHLEY

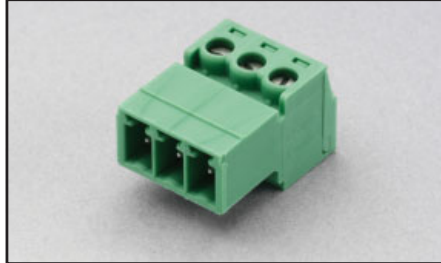
A GREATER MEASURE OF CONFIDENCE

Connectors, Adapters, and Tools



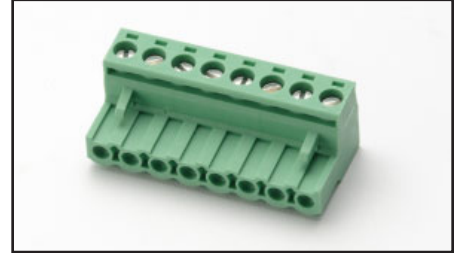
CS-1305: Interlock connector to mate with Model 6517B.

For use with: 6517B



CS-1423-3: Miniature mating connector used as a ground connector for the Models 2635A and 2636A.

For use with: 2635A, 2636A



CS-1629-8: 8-pin female cable termination block.

For use with: 2651A



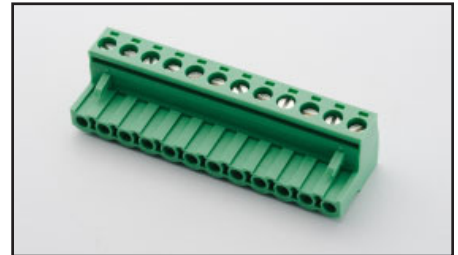
CS-1382: Female MMBX jack to male SMA plug adapter with 50Ω impedance and 6GHz maximum frequency

For use with: 4200-SCS



CS-1479: SMA male to BNC male adapter.

For use with: 4200-SCS



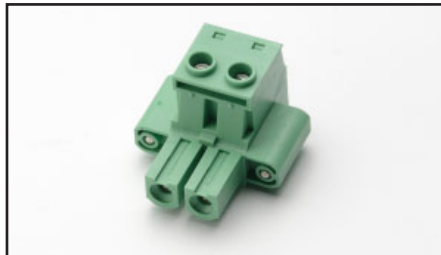
CS-1638-12: 12-pin rear panel output connector.

For use with: Series 2200



CS-1390: Male LEMO triax to female SMA adapter

For use with: 4200-SCS



CS-1592-2: 2-pin male screw terminal connector plug. Rated 50A. Mates with the Model CS-1626-2 screw terminal block.

For use with: 2651A



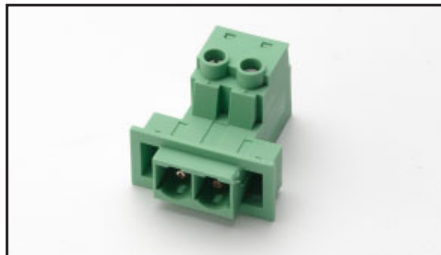
TL-24: SMA torque wrench

For use with: 4200-SCS, System 46, System 46T



CS-1391: SMA tee adapter (female-male-female)

For use with: 4200-SCS



CS-1626-2: 2-pin female screw terminal connector block. Rated 50A. Mates with Model CS-1592-2 screw terminal connector.

For use with: 2651A



1.888.KEITHLEY (U.S. only)

www.keithley.com

KEITHLEY

A GREATER MEASURE OF CONFIDENCE