

Reach every student in your classroom.

Introducing mimio Pad

Award-winning mimio[®] teaching solutions put the excitement of interactive learning in teachers' and students' hands.

Now, with mimio[®] Pad every student can create and collaborate with mimio Interactive, from anywhere in the classroom.

- Custom-tailored shortcut keys allow mimio Pad to work seamlessly with mimio Studio 6 software.
- mimio Pad's wireless technology is ready to go, right out of the box.
- Very slim and incredibly light, mimio Pad can easily be held – even by tiny hands.
- Connect multiple mimio Pads to a single classroom computer to enable student collaboration.
- Intelligent power management features give mimio Pad a 16-hour charge life.
- Long-range operation – up to 30 ft (10 m) from the classroom computer.
- mimio Pad is easy on the budget and available with special educational pricing.



"I started to use the mimio Pad the same day I received it. My students worked in small groups and were easily able to interact with the lesson from their desks. We love it!"

Renea M.
Fairfax County Schools

Touchboards

205 Westwood Ave, Long Branch, NJ 07740
Phone: 866-94 BOARDS (26273) / (732)-222-1511
Fax: (732)-222-7088 | E-mail: sales@touchboards.com

mimio Pad.

Designed to work seamlessly with mimio Interactive.



Award-winning mimio Interactive systems make it easy for teachers to create and present compelling lessons that engage more students and help them learn every day.



Get up and running fast.

Works right out of the box. There's no setup required, and everything you need is included:

- mimio Pad
- Integrated mimio Stylus pen with tether cord
- USB wireless receiver
- Rechargeable, replaceable battery
- USB recharging cable
- mimio Studio Software



- Works right out of the box, with no setup required.
- Works seamlessly with mimio Studio 6 software.
- Operates wirelessly with included USB wireless receiver.
- Offers easy access to favorite mimio features via 16 shortcut keys.
- Slim and lightweight.
- Easy-to-read LCD display shows number of connected pads and status of pen, battery, and connection.
- Easy battery charging via the included USB computer cable.
- Removable battery with 16-hour charge life.
- Intelligent auto-off.
- Integrated volume control.
- Ergonomic pen stylus works just like the mimio Mouse/Stylus
- Multiple mimio Pads can connect to a single classroom computer.
- Long-range operation – up to 30 ft (10 m) from the classroom computer.

Dimensions: 11.3 in. x 11.0 in. x .8 in.
(287 mm x 279 mm x 20 mm)

Weight: 1.5 lb (680 grams)

General system requirements:

Microsoft® Windows®: IBM® compatible, Pentium™ 166 MHz minimum, Windows Vista® or Windows 98/Me/2000/XP, 32 MB of RAM (64 MB of RAM recommended), 45 MB disk space minimum, CD-ROM drive, available USB port.

Mac®: PowerPC® G4 or better processor or Intel® processor (700 MHz processor), Mac OS® X version 10.4 operating system software or higher, 256 MB RAM minimum (512 MB RAM recommended), 200 MB free disk space, CD-ROM drive or Internet connection to download software, available USB port (required to use a mimio device).

Linux®: Pentium™ II, 450 MHz processor, Ubuntu® version 8.04. and higher operating system software, Fedora® version 10 and higher operating system software, openSUSE® version 11.1 and higher operating system software, 256 MB RAM minimum (512 MB RAM recommended), 200 MB free disk space, CD-ROM drive or Internet connection to download software, available USB port (required to use a mimio device).

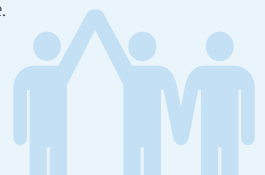
mimio Studio supports mimio DMA-02 or later devices (including mimio Xi and mimio Board). mimio Studio does not support mimio "Classic" or mimio FlipChart, Quartet, Turnstone Scribe, or other DMA-01 or DMA-FC devices. To upgrade older systems for use with mimio Studio, contact mimio about trade-in options.

Warranty information :

All hardware components: 2 years, extended to 5 years with product registration. See complete details at mimio.com.

Our Commitment to Training

mimio is committed to providing training tools and resources to ensure that every user can learn to use mimio products competently for everyday use.



Touchboards

205 Westwood Ave, Long Branch, NJ 07740
Phone: 866-94 BOARDS (26273) / (732)-222-1511
Fax: (732)-222-7088 | E-mail: sales@touchboards.com

mimio[®]
make it interesting