

# Track-It™ Temperature Data Loggers

## Description

The Track-It™ Temperature Data Logger is a battery powered stand alone compact data logger that records up to 64,000 samples of temperature data. The unit is easily configured using the included Track-It™ Software. Simply plug the logger into an open USB port on your PC and the software automatically identifies the logger. Configure the unit to start and stop recording at a predetermined time and date or only when an alarm condition is sensed. The sample storage rate can be set from 1 sample every 2 seconds to 1 sample every 24 hours. The on board data storage is non-volatile so data will not be lost in the event of a depleted battery. The Track-It™ Temp Logger can be ordered with or without an LCD display. Information displayed



on the LCD is also user programmable and can be sequenced by pressing the logger button. Both models have a multicolored LED indicator to notify user of alarms or general activity. A splash proof protective cover protects the logger when in use.

## Features

- Push button or program to start recording
- Up to 64,000 samples per record
- Alarm set points
- Small compact size
- Integral USB interface (no custom cable!)
- Interactive software (included!)
- N.I.S.T. calibration available
- One year battery life (battery included!)
- Optional five year battery life
- Wide temperature range 0-185F/85C
- High accuracy and repeatability
- Accurate internal clock (1 minute/year)
- Multiple user programmable displays

## Typical Uses

- Shipping
- Warehouse
- Food
- Museums
- Buildings
- Laboratories
- HVAC
- Refrigeration
- Pharmaceutical
- Agriculture
- Computer Rooms
- Communications Equipment



205 Westwood Ave  
Long Branch, NJ 07740  
1-877-742-TEST (8378)  
Fax: (732) 222-7088  
salesteam@Tequipment.NET



Made in USA

# Track-It™ Temperature Data Loggers

## Specifications

### General

<b>Record:</b>	<b>Sample Rates:</b> User configured 1 every 2 seconds to 1 every 24 hours <b>No. of Samples:</b> 32,000 or 64,000 (depends on config)
<b>Record Trigger:</b>	Two independent triggers. Multiple trigger modes: Instantaneous, button control, on alarm, time and date (start and stop), day of week
<b>Record Mode:</b>	Fill to end of memory; Cyclic, number of samples, time duration
<b>Display:</b>	4 digit LCD (Non display versions available with LED only) User programmable: Indication of data value, eng units, alarms, record mode, battery condition, time/date, memory
<b>LED:</b>	User programmable: Indication of alarms, recording, triggered
<b>Button:</b>	User programmable: View display, record on/off, reset alarms, reset timer
<b>Alarms:</b>	2 user programmable alarms. High or Low
<b>Communication:</b>	Direct USB connection

<b>Software:</b>	Track-It™ Software - Program device, view data(historic or real time), export to Excel™. Simple and advanced modes
<b>Battery:</b>	<b>Coin Cell Option:</b> Battery: Lithium CR2032 Life: 1 year @ 1 minute sample rate <b>Hi Energy Option:</b> Battery: EF651625 Life: 3 years @ 1 minute sample rate
<b>Dimensions</b>	3.66" (9.29cm)L x 0.75" (1.91cm)H x 1.16" (2.95cm)W

### Measurement

<b>Temperature Range:</b>	-20 to +85°C / -4 to 185°F
<b>Accuracy:</b>	±1°C 0 to 50°C / 32 to 122°F ±2°C -20 to 85°C / -4 to 185 F
<b>Resolution:</b>	0.1°C / 0.1°F
<b>Clock Accuracy:</b>	± 1 minute/year

### Ordering Information

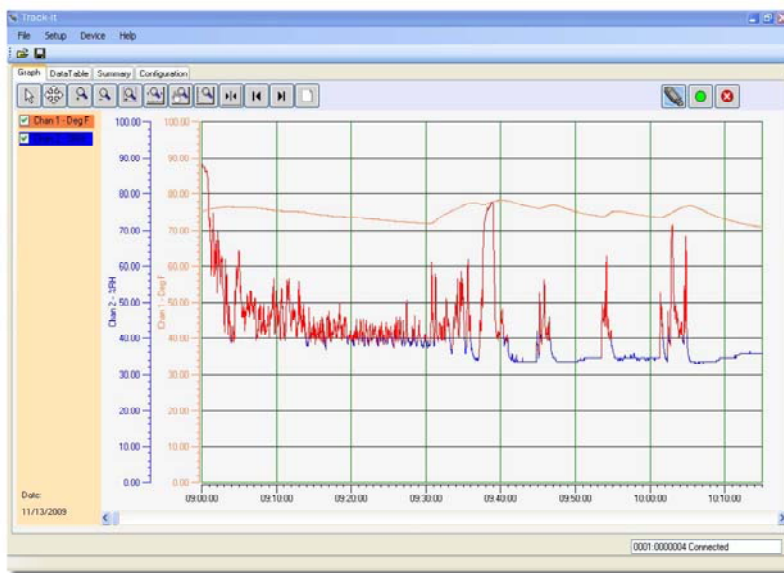
Model Number	Description
Temp Track-It	Logger with display, standard battery
Temp Track-It LB	Logger with display, long life battery
Temp Track-It B	Logger, no display, standard battery
Temp Track-It BLB	Logger, no display, long life battery
NIST Temp	NIST Calibration Certificate

## Track-It™ Software

Track-It™ Software is a powerful Windows based software package that is included with every Track-It™ Data Logger. It allows for easy setup, retrieval, interpretation and export of the recorded data. Simply connect your Track-It™ data logger to an open USB port and begin communicating immediately.

Point and click to select your sample interval, alarm set points, engineering units, start recording triggers and LCD Displays.

View a numerical data table or graphical representation of data readings relative to time. Use the graph tools such as zoom, cursor, min and max to examine and analyze the record. Track-It™ Software turns your PC into a real time data acquisition system by allowing you to stream graphical or tabular data directly to your PC (capability varies by model). Use the one click export function to automatically export stored data into an Excel spreadsheet.



205 Westwood Ave  
Long Branch, NJ 07740  
1-877-742-TEST (8378)  
Fax: (732) 222-7088  
salesteam@Tequipment.NET