

Track-It™ AC Event Data Logger

Description

The Track-It™ AC Event Data Logger is a battery powered stand alone compact data logger that records up to 64,000 on/off cycles. Use the Track-It™ AC Event Logger to monitor cycle patterns of pumps, blowers and other electrical equipment powered by 120 or 240Vac. The unit is easily configured using the included Track-It™ Software. Simply plug the logger into an open USB port on your PC and the software automatically identifies the logger. Configure the unit to start and stop recording at a predetermined time and date or only when an alarm condition is sensed. The sample storage rate can be set from 1 sample every 2 seconds to 1 sample every 24 hours or can be set to store a sample at every event. The on board data storage is non-volatile so data will not be lost in the event of a depleted battery. The Track-It™



AC Event Logger can also be used to record ambient temperature along with on/off cycles. This can help diagnose heat vs. cycle time issues. Information displayed on the LCD is also user programmable and can be sequenced by pressing the logger button. The multicolor LED indicator notifies the user of alarms, or general activity.

Features

- Push button or program to start your record
- Up to 64,000 samples per channel
- Monitor cycle frequency and duration
- AC ON or OFF reporting
- 120/240 VAC 50/60 Hz
- Alarm set points
- Small compact size
- Integral USB interface (no custom cable!)
- Interactive software (included!)
- One year battery life (battery included!)
- Optional five year battery life
- High accuracy and repeatability
- Accurate internal clock (1 minute/year)
- Multiple user programmable displays

Typical Uses

- AC Motor efficiency studies
- Predictive maintenance
- Monitor lead/lag pump cycles
- AC motor run times



205 Westwood Ave
Long Branch, NJ 07740
1-877-742-TEST (8378)
Fax: (732) 222-7088
salesteam@Tequipment.NET

Made in USA

Track-It™ AC Event Data Logger

Specifications

General

Record:	Sample Rates: User configured 1 every 2 seconds to 1 every 24 hours No. of Samples: 32,000 or 64,000 (depends on config)
Record Trigger:	Two independent triggers. Multiple trigger modes: Instantaneous, button control, on alarm, time and date (start and stop), day of week or on event only.
Record Mode:	Fill to end of memory; Cyclic, number of samples, time duration
Display:	4 digit LCD (Non display versions available with LED only) User programmable: Indication of data value, eng units, alarms, record mode, battery condition, time/date, memory
LED:	User programmable: Indication of alarms, recording, triggered
Button:	User programmable: View display, record on/off, reset alarms, reset timer
Alarms:	2 user programmable alarms. High or Low
Communication:	Direct USB connection
Software:	Track-It™—Program device, view data (historic or real time), export to Excel™. Simple and advanced modes
Battery:	Coin Cell Option: Battery: Lithium CR2032 Life: 12-15 months @ 1 minute sample rate Hi Energy Option: Battery: EF651625 Life: 3 to 5 years @ 1 minute sample rate
Dimensions:	4.06" (10.32cm)L x 0.66" (1.67cm)H x 1.00" (2.54cm)W

Measurement

Voltage Range:	120 to 240 Vac parallel (voltage triggered, optically isolated)
Temperature Range:	-20 to +85°C / -4 to 185°F
Accuracy:	±1°C 0 to 50°C / 32 to 122°F ±2°C -20 to 85°C / -4 to 185 F
Resolution:	0.1°C / 0.1°F
Clock Accuracy:	± 1 minute/year

Ordering Information

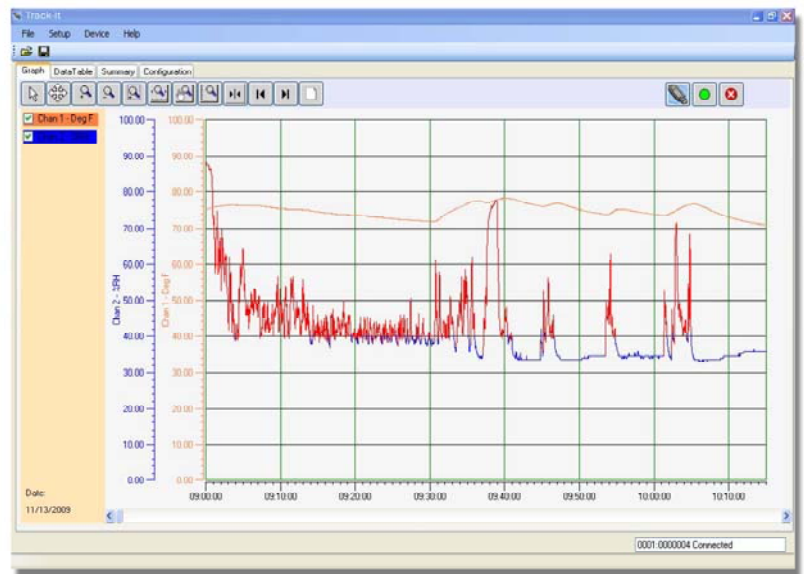
Model Number	Description
AC Event Track-It	Logger w/display, std. battery
AC Event Track-It LB	Logger w/display, long life battery

Track-It™ Software

Track-It™ Software is a powerful Windows based software package that is included with every Track-It™ data logger. It allows for easy setup, retrieval, interpretation and export of the recorded data. Simply connect your Track-It™ data logger to an open USB port and begin communicating immediately.

Point and click to select your sample interval, alarm set points, engineering units, start recording triggers and LCD Displays or just place the recorder into service using our industry experience driven default settings.

View a numerical data table or graphical representation of pressure and temperature readings relative to time. Use the graph tools such as zoom, cursor, min and max to examine and analyze the record. Track-It™ Software turns your PC into a real time data acquisition system by allowing you to stream graphical or tabular data directly to your PC. Use the one click export function to automatically export stored data into an Excel spreadsheet.



205 Westwood Ave
Long Branch, NJ 07740
1-877-742-TEST (8378)
Fax: (732) 222-7088
salesteam@Tequipment.NET