

Touchboards

205 Westwood Ave, Long Branch, NJ 07740
Phone: 866-94 BOARDS (26273) / (732)-222-1511
Fax: (732)-222-7088 | E-mail: sales@touchboards.com



 **Optoma**

LIVE THE HIGH-DEFINITION LIFESTYLE



HD81-LV | Home Theater Projector

HD81-LV | Home Theater Projection System



The HD81-LV Delivers True Performance

- Excellent brightness at 2500 lumens and astonishing contrast of 10,000:1 with AutoIRIS and ImageAI-II™
- Auto235 function automatically detects and uses fit format to provide better image quality with an anamorphic lens
- Complete 10-bit video processing (decoding, de-interlacing, scaling, image processing and color enhancement)
- Unique HDMI switching that outputs HDMI audio to HDMI-capable A/V receiver

A Definitive 1080p Home Theater Solution

The Optoma HD81-LV 1080p home theater projector is another addition to the company's award-winning projector line-up. The HD81-LV is the latest incarnation of the company's unique two-piece projection system that includes a native 1080p projector and studio-grade video processor.

The Optoma HD81-LV's brightness opens up new home theater environments. With its extensive connectivity options, personalized setting adjustments and a DarkChip3™ chipset from Texas Instruments, the HD81-LV is able to deliver rich and deep textures with astonishing image quality. The HD81-LV sports 2500 lumens and a 10,000:1 contrast ratio which makes it a unique system in non-light controlled environments.

The HD81-LV, with its two-piece design, eliminates the need for multiple cables going from video sources to the projector. The HD81-LV's video enhancement processor delivers an advanced three-stage process flow (decoding, image processing and color reproduction enhancement) that offers an impressive, personalized adjustment setting at each stage.

The two-piece design of the HD81 eliminates the need for multiple cables; all that is needed for the projector to be connected is a single HDMI video cable and a single control cable. With the processor's extensive inputs, there are more than enough connections to up-convert sources to 1080p for optimal viewing.

Together with the optional Anamorphic Lens/Sled Kit from Optoma, the HD81-LV can create a true widescreen cinematic experience. When the anamorphic lens is installed together with the HD81-LV, it creates a 2.35:1 widescreen image, without the loss of color clarity, brightness or resolution.



The Definitive Widescreen Home Theater Solution

Optoma Anamorphic Lens/Sled Kit (Optional)

The Optoma Anamorphic Lens option for home theater projectors is a complete kit that allows users to easily create a super-widescreen image in their own home theater setting. The Optoma BX-AL133 anamorphic lens converts a native 16:9 image to 2.35:1 cinema widescreen image.

Ideally suited to work with Optoma's 1080p home theater projectors, the BX-AL133 anamorphic lens is fully motorized and works with the projector's +12V trigger control. The Auto235 mode, Optoma's proprietary firmware, can automatically detect between 16:9 or 2.35:1 content and formats the image, while moving the lens to the correct position in a few seconds.



Video Processing Enhancement for the Optoma HD81-LV

A studio-grade professional Video Scaler and Color Management System

- The processor possesses the power of the Gennum VXP, the highest quality scaler and 10-bit 480i/576i/1080i motion adaptive HD de-interlacer

Dedicated engine for video enhancement and color management of images

- Advanced 10-step Gamma color enhancement
- RGBCYM 6-color with 16 region adjustments

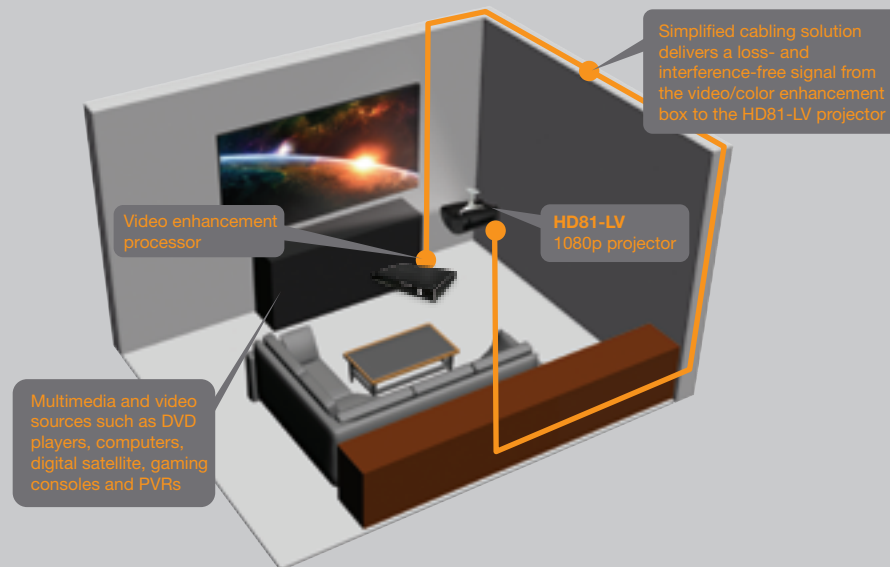


Extensive inputs

- Three HDMI plus external HDMI expansion
- Four components (two RGBHV, two RCA)
- One VGA (RGB/YPbPr/SCART)
- Three composite
- Three s-video
- RS-232
- Two +12V triggers
- IR port extension

ISFccc (Imaging Science Foundation's Certified Calibration Configuration)

Optoma's innovative cable management solution makes bulky, wire-filled installations a thing of the past.



HD81-LV | Home Theater Projection System Specifications

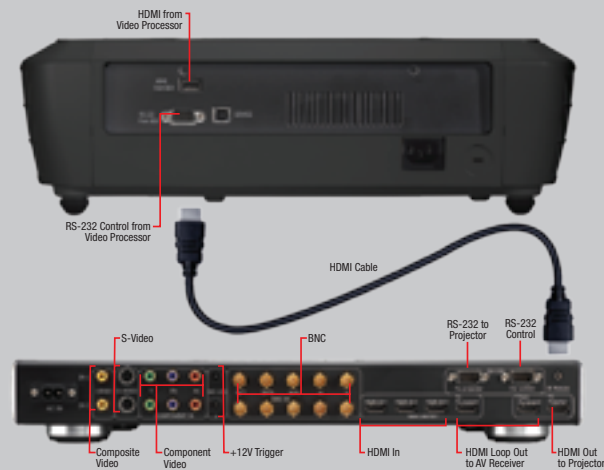
Projector

Weight:	10 lbs
ANSI Lumens:	2500
Contrast (Full On/Off):	10,000:1
Iris Control:	16-Step Auto-Iris, Manual and Auto Mode
Native Resolution:	1080p (1920 x 1080)
Technology:	Single 0.95" DarkChip3™ DLP® Technology by Texas Instruments
Size (W x H x D):	16.2" x 4.5" x 12.2"
Lamp Type:	300W UHP
Lamp Life:	2000 / 3000 (STD / ECO)
Scaler:	Gennum VXP
HDTV:	480i/p, 576i/p, 720p, 1080i/p
Focus:	Manual
Zoom Lens:	Manual, 1.2x
Digital Zoom:	Yes
Keystone Correction:	±5° Vertical
Vertical Refresh Rate:	Input: 24 to 85Hz, Output: 48, 50, 60Hz
Offset:	136%
Noise:	32dB
Throw Ratio:	1.85 – 2.22:1 (Distance/Width)
Throw Distance:	4.92' to 32.8'
Image Size (Diagonal):	30" to 300"
Security:	One Kensington® Lock Port
Standard Accessories:	Two AC Power Cords, Two HDMI Cables, Component Cable, Two RS-232 Cables, Lens Cap, Remote Control, Batteries for Remote, External IR Module, User's Manual, Warranty Card and Quick Start Guide
Optional Accessories:	Anamorphic Lens/Sled, Ceiling Mount, GrayWolf™ Series Screens and HDMI to DVI Cable
Warranty:	3 Years Optoma Express Replacement Service, 1 Year on Lamp
UPC:	796435 21 152 3

Video Processor

Weight:	9.2 lbs
Size (W x H x D):	17" x 2.5" x 12"
Image Processing:	Motion Adaptive 480i, 576i and 1080i HD De-Interlacing, 10-bit Image Processing, Advanced 3D Comb Filter, Three Presets plus Two Programmable Display Formats, Advanced Noise Reduction and Sharpening
Color Management:	User Definable Gamma, RGBCYM 6-Color, 16-Region Adjustment, 3 User Defined Modes plus ISF _{ccc} Color Settings
CEDIA Features:	ISF _{ccc} Discrete IR Commands (On/Off, Sources, Formats, User Settings), External IR Input Pod, RS-232 Control, Programmable +12V Trigger
I/O Connectors:	Three HDMI Inputs plus One External HDMI Expansion Input, Two BNC Component (YPbPr/RBGHV), Two RCA Component, Three S-Video, Three Composite, One VGA, RS-232, Two +12V Triggers, One IR Port Extension
Warranty:	3 Years Optoma Express Replacement Service
UPC:	796435 21 152 3

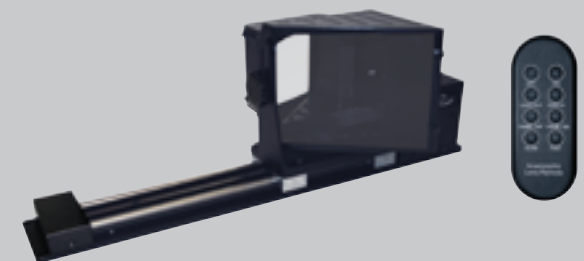
I/O Connectors



Optional Anamorphic Lens/Sled Kit

Item Number:	BX-AL133
Power Supply:	110/120v, 50-60 Cycles
Power Supply Output:	9V DC, 0.5A
Operating Voltage:	9-18V DC, 0.5-1.5A
Operating Current Draw:	Typical 650mA, Max 1.2A
Standby Current Draw:	60mA
Trigger Jack:	3.5 mm Mono or Stereo Jack, 12V, Tip Positive
Remote IR Jack:	2.5 mm Stereo Jack (Supplied)
Remote:	3oz, IR Emitter
IR Receivers:	Two, One Fixed, Another Remotely Attached (Optional)
IR Range:	50' from IR Sensor
IR Carrier:	Frequency 38 kHz
Certification:	FCC, CE (BX-AL133 Motor Drive Unit) UL Class II (Power Supply Only)
Design Life:	Greater than 250,000 Rail Traversals
Weight:	15 lbs (Lens and Sled)
Size (W x H x D):	19" x 7" x 8"
Kit Includes:	Anamorphic Lens, Bracket, Motorized Sled, AC Adapter, +12V Trigger Cable, Ceiling Mount Adapter Plate and Remote Control
Warranty:	2 Years Limited Parts and Labor
UPC:	796435 24 651 8

Optional Anamorphic Lens/Sled



Optoma Technology, Inc.

715 Sycamore Drive, Milpitas CA 95035 • Tel: 408-383-3700 • Fax: 408-383-3702 • For more information, please visit www.OptomaUSA.com.

Specifications subject to change without notice. Copyright © 2007 Optoma Technology, Inc. DLP® and the DLP logo are registered trademarks of Texas Instruments. All other names mentioned herein are property of their respective owners. [Data-HD81-LV-001-060107]