

Captureboard

Software Operation Manual



Thank you for your purchase of this PLUS product.

Please read this Captureboard Software Operation Manual carefully before use to take full advantage of the functions of this product. After you have finished reading the manual, please keep it for future reference.

Table of Contents

| | |
|--|----|
| Introduction..... | 3 |
| What is Captureboard Soft? | 3 |
| Operating Environment..... | 3 |
| Copyright and License | 4 |
| Equipment Connections | 5 |
| Installation of the Software | 6 |
| Check Prior to Installation | 6 |
| Installation of the Captureboard Soft | 6 |
| Uninstallation of the Captureboard Soft..... | 9 |
| Names and Functions of the Menu and the Superimposed Image Display Screen | 10 |
| Menu..... | 10 |
| Superimposed Image Display Screen..... | 11 |
| Basic Operation | 13 |
| Adjustments and Settings..... | 17 |
| Fine Adjustment of the Captured Image | 17 |
| Making Settings | 18 |
| Setup Utility | 19 |

Trademarks

- * Microsoft and Windows are registered trademarks or trademarks of the Microsoft Corporation in the United States and other countries.
- * Adobe and Adobe Acrobat Reader are trademarks of Adobe Systems Incorporated.

Due respect will be afforded to the trademarks of the various companies and to product trademarks even when not expressly noted.

In addition, product names and company names contained in this manual are registered trademarks or trademarks of the respective companies.

- (1) The contents of this manual may not be reprinted in part or whole without permission.
- (2) The contents of this manual are subject to change without notice.
- (3) Great care has been taken in the preparation of this manual; however, should any questionable points, errors, or omissions be apparent, please contact us.
- (4) Notwithstanding part (3), PLUS Vision Corp. will not be responsible for any claims or lost profits or other matters deemed to be the result of using this unit.
- (5) The use of a printer as the peripheral device of the PLUS Captureboard is taken to be a prerequisite; therefore, operation will not be guaranteed when the printer is used with a direct connection to a personal computer.
- (6) Manuals with incorrect collating or missing pages will be replaced.

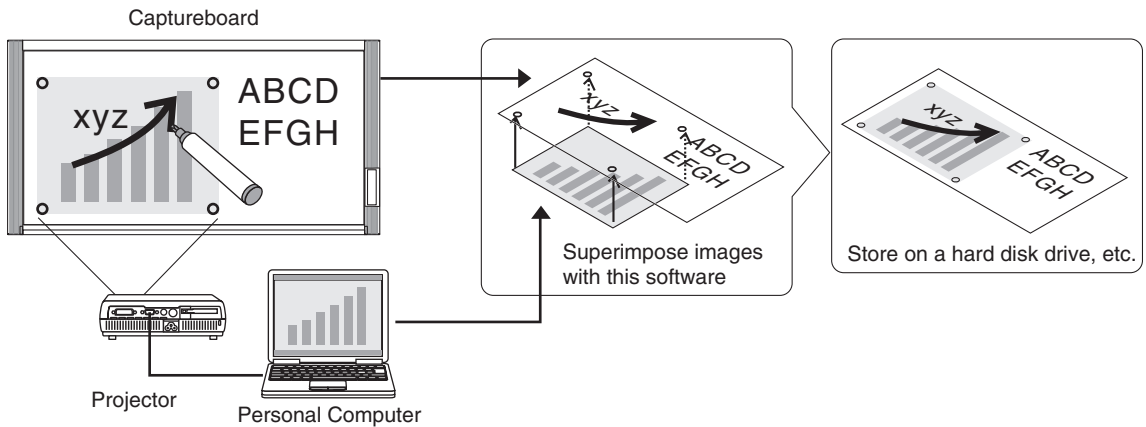
Introduction

What is Captureboard Soft?

Using a TWAIN driver, the Software captures written and drawn data on the Captureboard as an image and then superimposes it with the projection image of the projector on the personal computer, allowing it to be saved as image data.

In addition, the positioning of the projection image of the projector and the read data of the Captureboard is automatically and easily determined by a function that detects the projection position information of the projector which is marked on the sheet surface of the Captureboard.

In this manual, the Captureboard Soft may at times be referred to as “this software”, and the Captureboard as “this machine” or “the main unit”.



Notice

- This software is designed to store records of meetings. It may not reproduce and store accurate colors or image quality. Also note that the capture data automatic positioning function is not something that guarantees an accurate positioning operation.
- The operation of the Captureboard Soft supports only the C-11 Series.

Operating Environment

Supported OS: Microsoft Windows 2000 Professional (Service Pack 4 or higher) /
XP (Home Edition /Professional Edition Service Pack 2 or higher) /
Vista (32 bit version)

Supported PC: IBM PC/AT fully compatible computers that run the aforementioned OS

CPU: Pentium II or higher processor (A clock frequency of 1.2 GHz or higher is recommended)

Memory: Windows 2000 (128 MB or greater),
Windows XP (256 MB or greater),
Windows Vista (512 MB or greater)

Available hard
disk space: 40 MB or greater

Display resolution: 800 x 600 pixels or greater

Peripheral devices: CD-ROM drive, standard USB ports

Web browser: Internet Explorer 6.0 or higher

Notice

- All operations are not guaranteed in the aforementioned operating environment.
- Windows 95, 98SE/Me, NT, 2000 Server, Server 2003, and Vista (64 bit version) are not supported.

Copyright and License

◆ Copyright

PLUS Vision Corp. (hereafter called We) holds the copyright of this software and related works which are protected by Japan's Copyright Law and international treaties.

Copyright (C) Since 2007 PLUS Vision Corp. All rights reserved.

◆ Disclaimer

We shall not be responsible in any way for direct or indirect damages that may arise from this software or products derived from related software. We shall not be responsible in any way for damages as a result of the machine or medium. Furthermore, We shall not be responsible in any way that may relate to the effects of the results of using this software.

◆ Terms of Use and Terms of Distribution

- We shall not be responsible in any way for any kind of damages arising from the use or inoperability of this software.
- We shall not be liable in any way for support of this software, any kind of warranty, correction of trouble or continuation of version upgrades, etc.
- Provided that you consent to the aforementioned matters, you shall be permitted to use the software for non-profit purposes for personal use and use within a company.
- When "this software" is mentioned, it refers not only to the executable file, but to all of the component files including Help and appended text.

◆ Support

We call support the provision of all kinds of information including answers to questions, requests, trouble reports, and other matters, and the scope of our support shall be limited to the functions and operation of this software.

Problems that arise in using this software cross many paths including those attributable to the personal computer, the OS, other application software, and other peripheral devices. Accordingly, we only support problems that are attributable to this software. Also, this software is subject to version upgrades without prior notice due to the technical advancement of hardware and software. The customer can receive and use upgraded versions of this software through a method determined by us. Note that version upgrades will be limited to customers who consent to the aforementioned conditions of use.

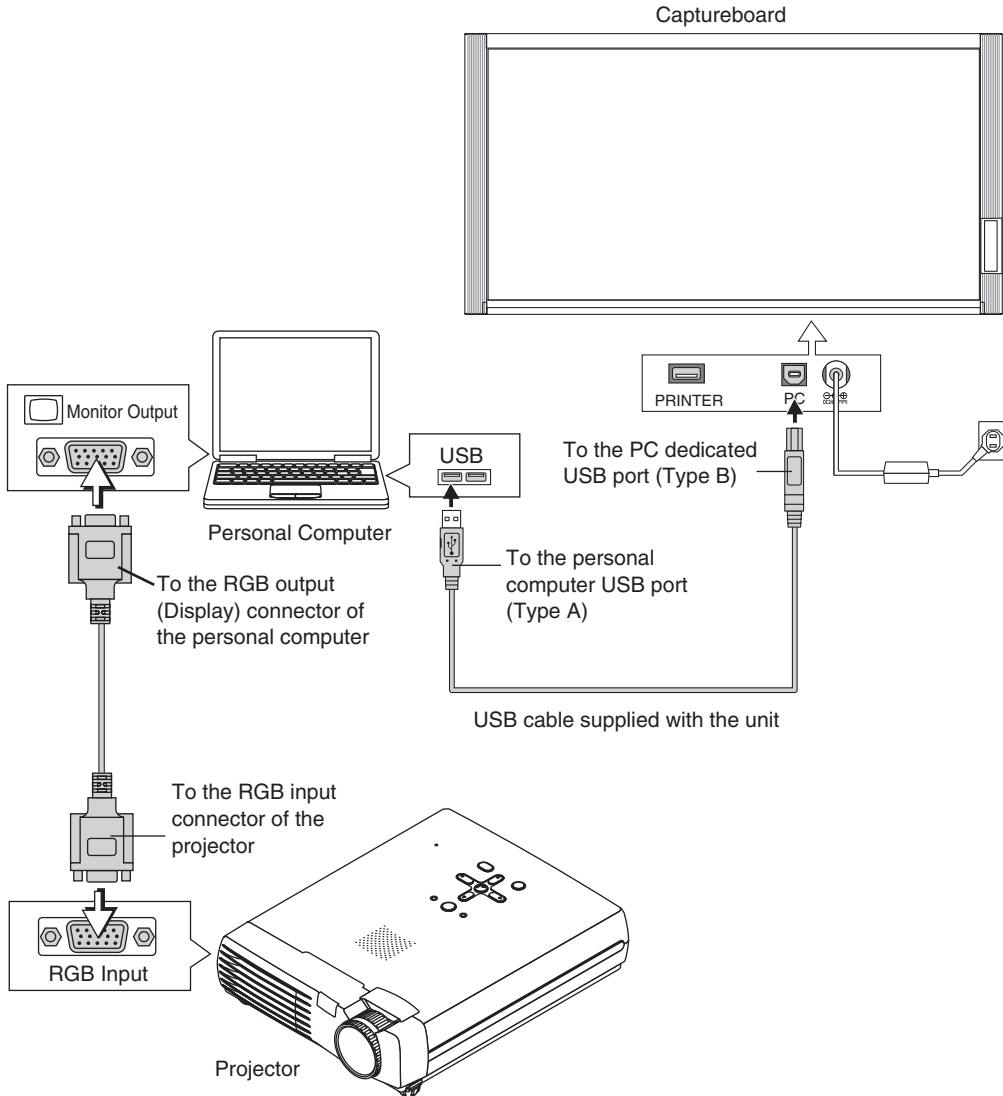
* Upon downloading this software from the PLUS Vision Web site, or installing it from the CD-ROM, the customer is deemed to have consented to each of the terms.

Equipment Connections

Use of this software requires a USB connection between this machine and the personal computer, and a RGB or DVI connection between the personal computer and the projector.

Notice

Do not connect this machine to the personal computer before installing the software.



Note

This is a representative example of personal computer and projector connections. Please see the manuals of your personal computer and projector for details.

Installation of the Software

Selecting Software Installation from the menu of the accompanying CD-ROM will install the Captureboard Soft, TWAIN driver, USB driver, and Setup Utility.

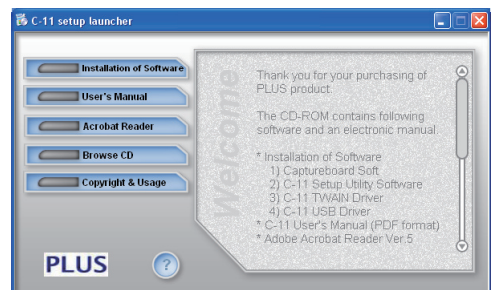
Check Prior to Installation

1. Check whether your personal computer satisfies the operating environment. (See page 3)
2. Check that your personal computer is not currently connected to this machine via USB.
3. At the time of installation, install with Administrator rights (i.e., a user having administrator rights) for Windows 2000, or with a Computer Administrator rights (account) for Windows XP/Vista.
4. Close all other applications that are running.

Installation of the Captureboard Soft

- 1 Insert the supplied CD-ROM into the CD-ROM drive of the personal computer.
The menu screen will be displayed automatically.
If the menu screen is not displayed automatically, double click CD-ROM icon and double click "autorun.exe".

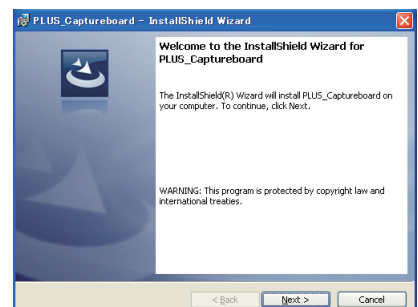
- 2 Click "Software Installation".
The installer will start.



- 3 Follow the instructions of the installer and start the installation.
The Captureboard Soft, the TWAIN driver, the USB driver, and the Setup Utility will be installed at the same time.

Note

- * When using Windows Vista, each time the installer is started, the User Account Control dialog box is displayed. Select "Continue" and continue with the installation.



Installation of the Software

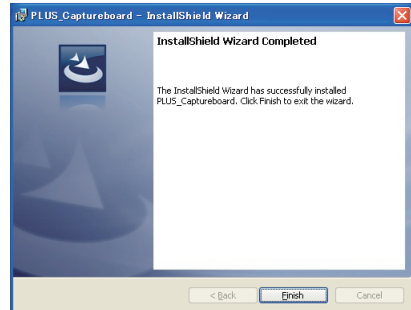
- * The Windows Security dialog box will be displayed with Windows Vista.
Select “Install this driver software (I)”.
- * When using Windows Vista, each time the installer is started, the User Account Control dialog box is displayed.
Select “Continue” and continue with the installation.



4

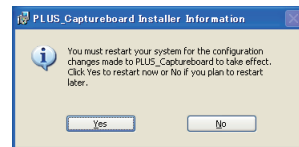
Click “Finish”.

The “Installer Information Dialog Box” will be displayed.




Click “Yes (Y)” and restart the personal computer.

When this software is installed on the personal computer for the first time, continue to make the following connections and operations.



■ Associating the USB port of the Captureboard

The USB driver is installed on the personal computer by the installer; however, the association with the USB port is not completed. To enable use of the Captureboard Soft, install it according to the following procedure when connecting the Captureboard.

- Preparation**
1. Press the ON/Standby  button of the Captureboard to turn on the power.
 2. Use a USB cable to connect the USB port of the personal computer with the PC dedicated USB port of the Captureboard. (See Page 5)
The New Hardware Search Wizard will be displayed.

Install according to the New Hardware Search Wizard.

Select “Install Software Automatically (Recommended) (T)” and click “Next (N)(when using Windows XP)”.

Start the installation of the USB driver.

Note

- * Installation will be completed automatically with Windows 2000/Windows Vista.

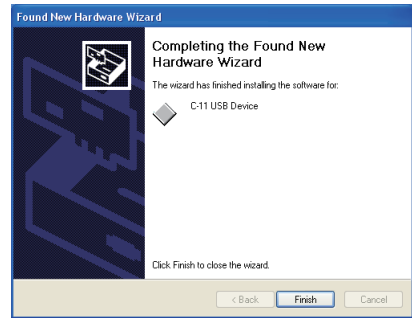


Continue on next page

2

Click “Finish”.

This software can now be used.



Uninstallation of the Captureboard Soft

- 1** **Selecting [Start] → [Control Panel] will display the Control Panel screen.**
Check that your personal computer and the Captureboard are not currently connected by USB.
- 2** **Double click “Add or Remove Programs or Applications (this will differ depending on the OS)” to display the “Add or Remove Programs Properties” screen.**
- 3** **Select PLUS Captureboard from among the list displayed and click [Change / Remove] to display the Add or Remove wizard screen.**
- 4** **Selecting the [Remove] radio button of the wizard and clicking [Next] will start the uninstallation.**

Note

- * “Add or Remove Programs” will be displayed for Windows XP/Vista.
- * When using Windows Vista, each time the uninstaller is started, the User Account Control dialog box is displayed. Select “Continue” and continue with the uninstallation.
- * When using Windows Vista, a portion of the files that have been redirected to the Virtual Store folder will remain even when uninstallation of the software has been performed. Delete these files manually.

The Virtual Store folder is located in C:\Users\XXXXXX\AppData\Local\VirtualStore\Program Files\
(XXXXXX is the logon user name. Please note that usually the AppData folder is hidden.)

Names and Functions of the Menu and the Superimposed Image Display Screen

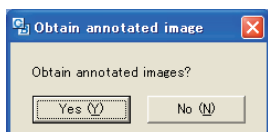
Menu

● Main Menu



① Scan button

Displays the projection image superimposed screen.



Yes: Starts the capture of the image (projected by the projector) that is displayed on the personal computer screen, and the hand drawn image of the sheet surface.

No: Starts the capture of only the hand written and drawn image of the sheet surface. There will not be superimposing with the image projected by the projector.

✖(Close): Closes the projection image superimposed screen.

② Mark button

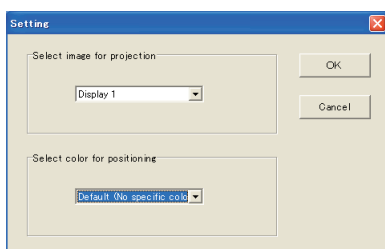
Switches the display of the positioning ○ marks of the projection image.

Each click switches between “Display” and “Hide”.

The default setting is “Display”.

③ Settings

Displays the settings screen.



Select image for projection: Selects the number of the monitor that is connected to the projector.

The default setting is “Display 1”. This software automatically searches for the number of connected monitors.

Select color for positioning: Selects the color of the ○ mark that detects the position of the projection image of the projector.

Select from among No specific color selected, Red, Green, Blue, and Black. The default setting is “No specific color selected”.

The setting contents will not be stored unless the screen is closed by clicking the [OK] button.

✖(Close): Closes the settings screen.

④ ? (Help)

Displays the operation description.

⑤ ■ (Minimize)

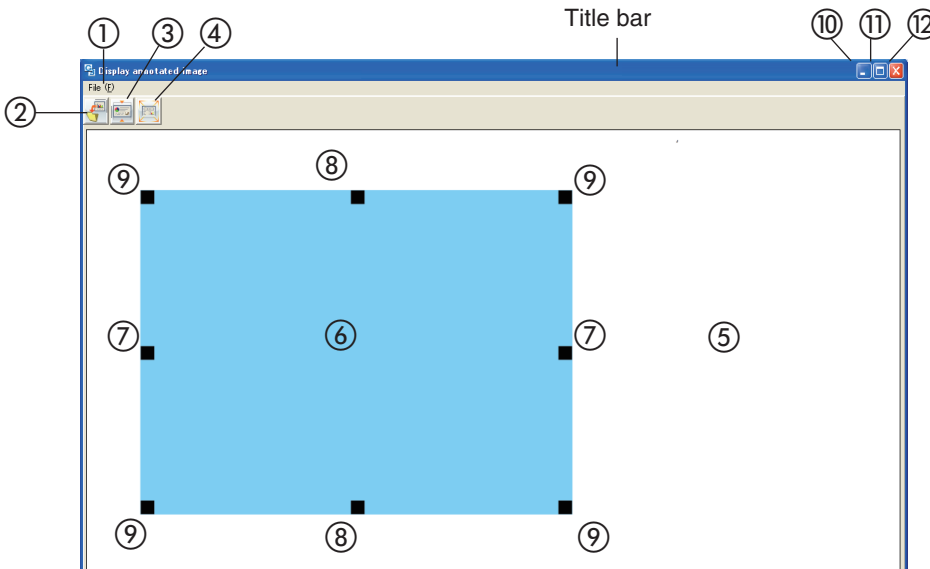
Minimizes the menu screen and displays the icon on the task bar.

⑥ ✖ (Close)

Closes the program.

Superimposed Image Display Screen

The superimposed image display screen is displayed when “Yes” is clicked on the “SCAN” button (see page 10 section 1) and screen and the hand written and drawn image of the sheet surface is captured by the personal computer.



① File Menu

Save (S): Overwrites and saves using the current name.

Save as (A): Saves with a different name or to a different location.

Print (P): Prints using the printer that is connected to the personal computer.

② Save Button

Saves when there is save data. Opens the save screen when there is no save data.

③ Aspect Button

Switches the horizontal ratio of the superimposed image. Each press switches between “Image having same ratio as the sheet surface” and “Image that is 3/4 size horizontally”. (Available only with Model C-11W.)

At time of saving, the image will be saved at the selected ratio.

The default setting is “Image having same ratio as the sheet surface”.

④ Full Screen Display Button

Provides a full screen display of the superimposed image. Clicking on the screen will result in a return to the original window size.

* Using the full screen display is convenient when projecting a superimposed image with the projector.

The default setting is “Window size”.

⑤ Captureboard Capture Screen

Execution of the scan operation displays the handwritten image data of the captured sheet surface.

⑥ Personal Computer Capture Screen

Pointers (⑦ to ⑨) of the personal computer screen that is projected by the projector are displayed by left clicking on the personal computer capture screen ⑥ and hidden by right clicking.

Drag the pointers to finely adjust the size and distortion.

To move the position, drag a part other than the pointers.

Names and Functions of the Menu and the Superimposed Image Display Screen

⑦ Horizontal Size Pointer

Corrects the size in the horizontal direction.

⑧ Vertical Size Pointer

Corrects the size in the vertical direction.

⑨ Affine Pointer

Corrects images that are diagonally distorted.

⑩  (Minimize)

Minimizes the superimposed image display screen, and the short title bar is displayed at the upper left of the task bar. In addition, clicking the minimize icon of the main menu when it is displayed with window size also results in the superimposed image display screen being displayed as an icon on the task bar.

⑪  (Maximize)

Each click switches the image display screen (window) between a maximized display or a display at the original size.

⑫  (Close)

Closes the superimposed image display screen.

Closing the superimposed image without saving it will cause the superimposed image to be lost.

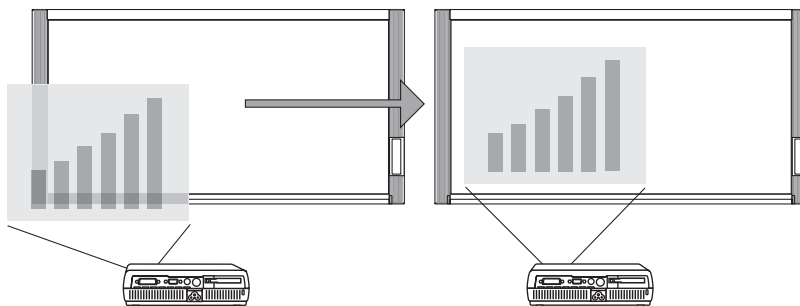
Basic Operation

An example is given of a method for performing a presentation in which a projector projects images onto this machine, and the record is saved on a personal computer.

Before starting the operation, connect the various pieces of equipment and turn them on.

Project the image of the personal computer from the projector

- ① Operate the personal computer and prepare the documents that will be projected with the projector.
- ② Adjust the size, display position, and other factors of the projector image.
Please see your projector manual for information about operation.



Note

- A full screen display (in which the image is displayed to fill the screen without the display of tool bars, etc.) is recommended for the projection image from the personal computer. When not in a full screen display, tool bars and other items are superimposed. Please see the manual for your personal computer or the application software that you are using for details.
- When the screen of a personal computer is not projected from the projector, or the screen of a personal computer has disappeared, change the settings of the external output of the personal computer. In Windows, the switchover can usually be accomplished by holding down the [Fn] function key and pressing one of the [F1] to [F12] keys. The [F1] to [F12] keys will differ depending on the manufacturer of the personal computer. Please see the Help menu of your personal computer for details.
- An attempt to superimpose with a projection image that has used the digital enlargement function of the projector will not result in an enlarged image.
- Set up the projector so that it is level to prevent a projection image that is on an angle. When the projection image is on an angle, the size or position of the superimposed image might be improper. (Adjustment will be possible with this software.)
- Project the image so that it falls within the capture range of the Captureboard.
- Please project the image at a size that is 2/3 of the vertical size of the board surface or larger.

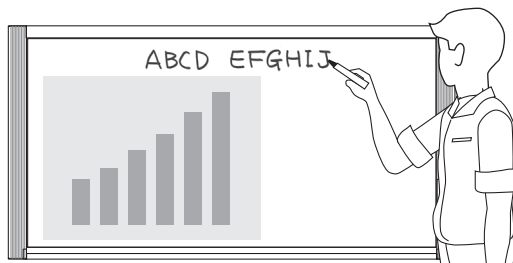
2

Making a Presentation

Use the dedicated markers to write or draw diagrams on the sheet surface (including the projected area).

Note


When saving the superimposed image as meeting records, do not write or draw diagrams in the four corners of the projection screen. The four corners will later be used for drawing position detection \bigcirc marks.






3




Save the Superimposed Image of the Projection Image and the Sheet Surface on the Personal Computer

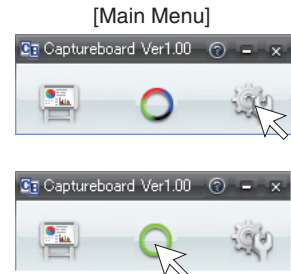
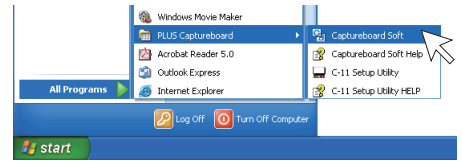
Start the Captureboard Soft

Click the personal computer [Start] → [All Programs] → [PLUS Captureboard] → [PLUS Captureboard Soft], or click the shortcut icon  on the desktop.

This will display the main menu of the Captureboard Soft. The  mark (i.e., a positioning mark without specified color at the default setting) will be displayed in the four corners of the projected image.

To change the color of the  marks, click the  (Settings) icon of the main menu and select a marker color from “Selection of position detection specification color” that is not being used on the sheet surface. See “Making Settings” on Page 18.

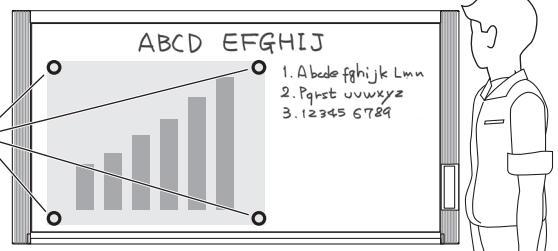
When the  marks are not displayed, click the  button of the menu. Each click of the  button toggles between display and hide.



Note

Check whether this machine and the personal computer are properly connected. “PC” is displayed in the display window of the main unit control panel when the equipments are properly connected.

Positioning Marks








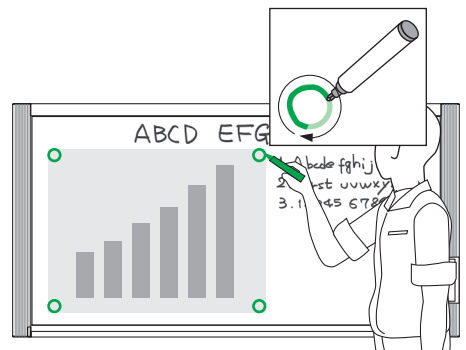
4

Trace with a Marker Having the Same Color as the marks of the Projected Four Corners

Properly draw the  marks in the color of the projected marks.

Note

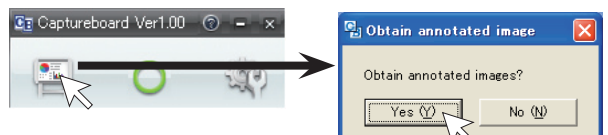
- This software uses the  marks drawn on the sheet surface to position the projection image and the sheet surface. Blurry or broken  marks might not be recognized.
- Do not write or draw diagrams near the  marks.
- When an image with extreme keystone distortion is projected as is, it may not be possible to recognize the  marks.
- When the  marks are not drawn, the projection image will be superimposed at the upper left.
- Content that has been drawn at the periphery of the sheet might not be captured. Please see “Allowable Capture Range” in your Captureboard manual for details.
- Animation cannot be captured as a personal computer capture image.



5

Click the (Scan) Button of the Menu

Displays the projection image superimposed screen.



6

Click [Yes]

The sheet surface of the Captureboard will be scrolled, the capture will start and be completed. Then the hand written and drawn image will be transferred to the personal computer. In a little while the superimposed image display screen will open.

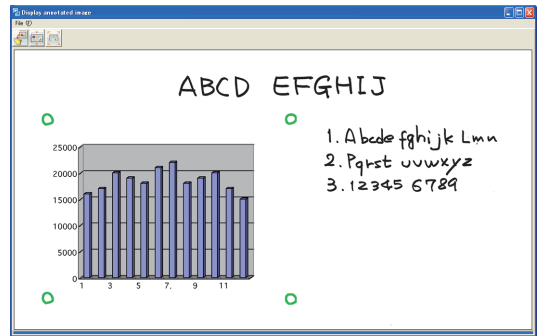
When the personal computer capture image and the Captureboard capture image are shifted on the superimposed image display screen, see “Fine Adjustment of the Captured Image” on Page 17.

Click [No]

When not superimposing the hand drawn image of the sheet surface and the projector projection image. Clicking “No” will open the [Save as] screen described below without displaying the capture image.

Note

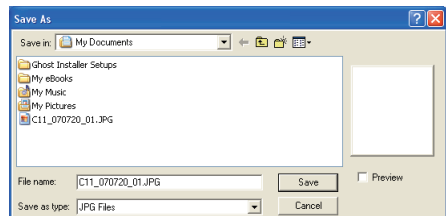
Capture with the Captureboard Soft will always capture in color, regardless of the color setting of the Captureboard control panel.



7

Click (Save) to Save

- When saving for the first time, clicking will display the personal computer [Save as] box. Select “Save location” “File type”, enter the file name, then click the [Save] button.
- The image will be overwritten and saved after the second time.
- To create a new folder, click [Create new folder] or click the icon, enter the folder name in the newly created folder, then click [Open]. Next, select the file type, enter the file name, then click [Save].
- [Save] or [Save as] can be selected from [File] of the menu bar.



This permits the saving of the superimposed image of the hand written and drawn image data of the Captureboard sheet surface and the projector projection image.

Using this saved image, a meeting report or document can be created.

● Tips for Saving

- Use the Density button of the main unit control panel to set the density of the hand drawn image data of the sheet surface. When the capture is dark, set the “Density indicator” to be lit, and when capture is standard, set the “Density indicator” to be off.
- Captureboard saving specifications
Color: 24 bits/pixel
Types of image files: JPEG and PNG

8

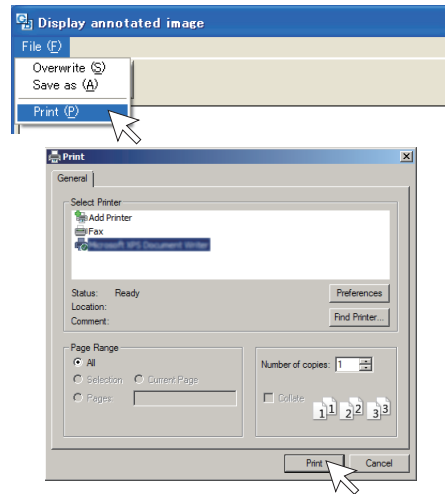
Printing

Printing is performed by the printer that is connected to the personal computer.

- ① Select [Print (P)] from [File (F)] of pull-down menu.
The printing settings screen will open.
- ② Clicking the [Print] button will print the selected image.
Clicking the [Detailed Settings] button for settings.
This screen will differ depending on the printer.

Note

The superimposed image cannot be printed directly using the Captureboard and the printer connected to it (which is sold separately).



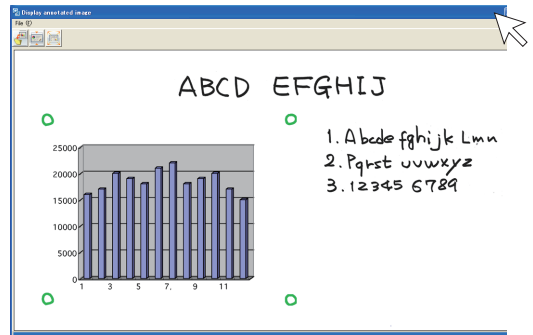
9

Closing

Clicking (Close) will close the superimposed image display screen.

Closing the superimposed image without saving it will result in the loss of the image.

To capture with the next sheet surface, proceed from Step 4.



Closing this Software

Clicking (Close) of the main menu will close this software.



Disconnecting the USB Cable of the Personal Computer and the Captureboard

When disconnecting the USB cable of the personal computer and Captureboard, first disconnect the USB at the personal computer side.

The disconnection operation will differ depending on the OS of the personal computer. Please see the manual for your personal computer or the Help menu of the personal computer for details.

- 1 Click the [Safely Remove Hardware] icon on the task bar and then click the USB drive that is to be disconnected (e.g., the "C-11 USB Device" device ID will differ depending on the personal computer system that you are using).
- 2 Click [OK] when the "Safely remove C-11 USB Device" screen is displayed.
(The [OK] does not appear in Windows XP/Vista. Click [X] to close.)

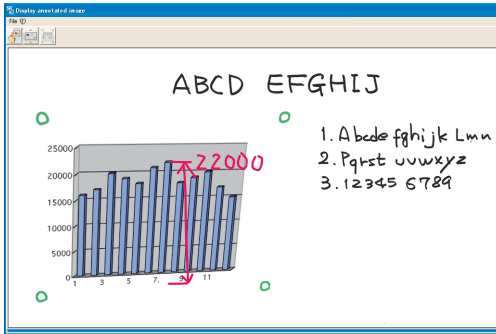
Note

- Proper disconnection of the USB drive might not be possible while the personal computer is checking the status of peripheral devices.
Should this be the case, follow the instructions of the screen displayed on the personal computer.

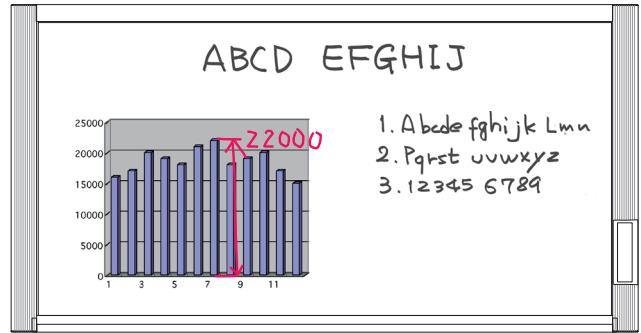
Adjustments and Settings

Fine Adjustment of the Captured Image

When the positions of the personal computer captured image and the Captureboard capture image (such as writings and drawn on the board surface) differ on the Superimposed Image Display Screen, this function changes the position or size of the personal computer capture image on the Superimposed Image Display Screen.



Superimposed Image Display Screen



Captureboard

Adjusting the Display Position of the Image

Drag the personal computer capture image to the target position.

Adjusting the Image Size or Distortion

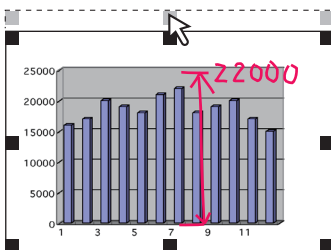
A left click on the personal computer capture image will display the pointers (in 8 locations).

Drag the pointers and adjust.

Right click to delete the pointers.

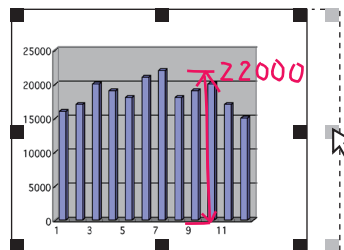
To stretch vertically

Drag the center top or bottom pointer.



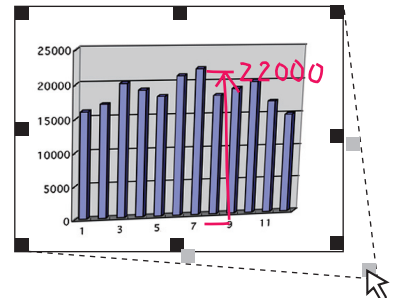
To stretch horizontally

Drag the center left or right pointer.



To stretch diagonally

Drag the pointers of the four corners.




Note

This software creates on the personal computer a superimposed image of the image transferred to the personal computer (that was hand written and drawn on the sheet surface of the Captureboard) and the personal computer screen (which is the screen output for projection by the projector).

When the keystone distortion (horizontal distortion/vertical distortion) of the image projected by the projector is adjusted, it will be slightly smaller than the output screen from the personal computer screen. (The size of the image changes depending on the degree of distortion compensation.) This is a result of the compensation characteristics of the projector.

As a result, the position matching or image size will differ slightly. The position move adjustment or the image size adjustment are used to correct this condition.


Settings

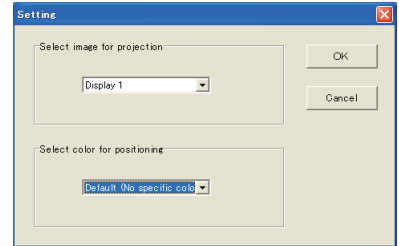
These settings perform the selection of the monitor that is connected to the projector and the selection of the  mark color used for position detection.

1

Click the (Settings) Icon of the Menu

The settings screen will open.


Clicking the  (Close) icon will close the settings screen.
The selected settings will not be saved.



2

Select the Number of the Monitor that Is Connected to the Projector that Projects to the Captureboard

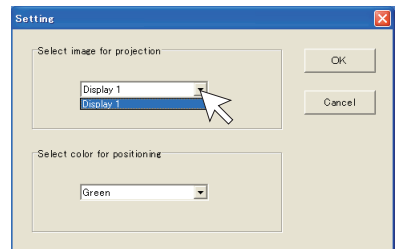
This is set when a personal computer that can accept the connection of multiple monitors and a projector are connected. There is no need for this setting when there is only one monitor.

Clicking [] of the [Projector Monitor Selection] column will display a list.
Click the desired monitor number from this list.

This software automatically searches for the number of connected monitors.


Note

When the number of the monitor is not known, click “Screen Properties” → “Settings” → “Identification” on the personal computer and check the number of the monitor that is connected to the projector.



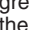
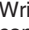


3

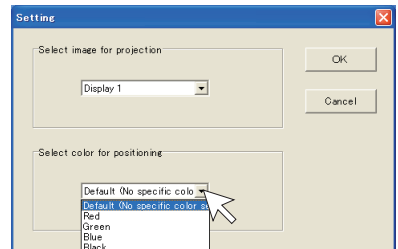
Change the Setting of the Mark Color Used for Display Position Detection of the Projected Image of the Projector

Clicking [] of the [Position Detection Specification Color Selection] column will display a list.

Click the target color from among No specific color selected, Red, Green, Blue, and Black.

Note

- When “No specific color selected” has been selected, an arbitrary marker color from among the four colors of red, green, blue, and black can be used for drawing the positioning mark. Recognition is judged solely by the shape of the  mark that has been drawn with the marker. Writing or drawing a diagram that resembles the  mark may result in a position of the projection screen that cannot be properly recognized.
- When one color has been selected from among “Red, Green, Blue, and Black”, the same marker color as the selected color can be used for drawing the positioning marks. Recognition is judged by the color and shape of the  mark that has been drawn with the marker. Using the same color marker for writing or drawing a diagram that resembles the  mark may result in a position of the projection screen that cannot be properly recognized.

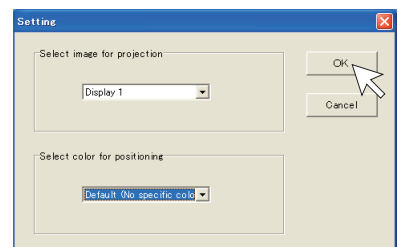


4

Finalizing

The selection will be finalized by clicking [OK], and the settings screen will close.

To cancel the selected settings, click [Cancel]. The settings screen will close without the settings being finalized.



Setup Utility

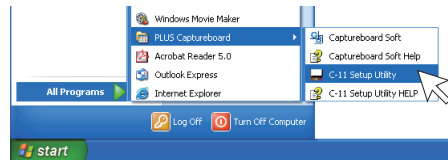
Using the Setup Utility permits changing the settings environment of the Captureboard's USB memory saving, and print function.

■ Settings that Can Be Changed

- Time Day Stamp
- Aspect Ratio
- Binding margin
- Paper size

■ How to Start the Setup Utility

Click the personal computer [Start] → [All Programs] → [PLUS Captureboard] → [C-11 Setup Utility].



The Setup Utility will start.

* See "C-11 Setup Utility Help" for details about method of use.



205 Westwood Ave, Long Branch, NJ 07740
Phone: 866-94 BOARDS (26273) / (732)-222-1511
Fax: (732)-222-7088 | E-mail: sales@touchboards.com

PLUS Vision Corp.

1033-1, Oshitate, Inagi-shi, Tokyo, 206-0811 JAPAN

www.plus-vision.com
[email:plusvision@plus.co.jp](mailto:plusvision@plus.co.jp)

ISO 9001 certification. ISO 14001 certification.