

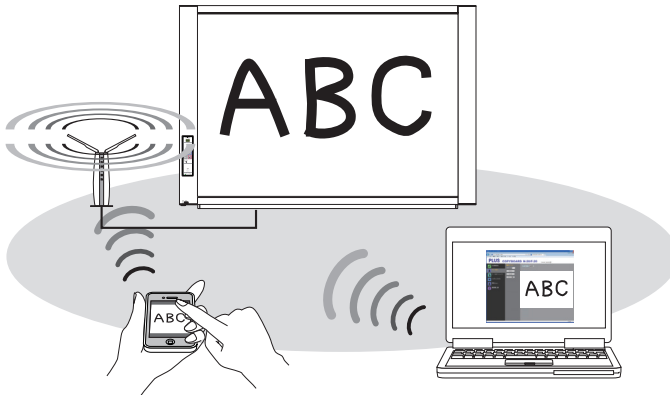
# PLUS

# Touchboards

205 Westwood Ave, Long Branch, NJ 07740  
Phone: 866-94 BOARDS (26273) / (732)-222-1511  
Fax: (732)-222-7088 | E-mail: sales@touchboards.com

## Copyboard Wireless Operation Manual using "MTG Pocket" Application

---



### Table of Contents

Introduction .....	2
Installation and Settings .....	3
Operating Environment .....	3
Step 1:Connecting the copyboard to a network providing wireless LAN access points .....	4
Step 2:Setting the network mode to "Public" through "CB Setup" .....	5
Step 3-1:To use the "MTG Pocket" application .....	6
1. Installing the "MTG Pocket" application on a smartphone (operations on the smartphone).....	6
2.Connecting the wireless LAN and smartphone (operations on the smartphone) .....	6
3.Operating the "MTG Pocket" application (operations on the smartphone) .....	7
Step 3-2:To use a web browser on a computer .....	10
1.Connecting the wireless LAN and computer (operations on the computer).....	10
2.Controlling the copyboard remotely (operations on the computer).....	12
Appendix: New Functions in the latest Firmware .....	14

# Introduction

This software allows you to operate the copyboard remotely from a smartphone or a computer and store images on the copyboard surface wirelessly on the smartphone or computer. The “MTG Pocket” (Meeting Pocket) application is operated on smartphones, and the web browser on computers.

## Contents of these operating instructions

This manual describes the installation and setting procedures required to use the “MTG Pocket” application on smartphones. The “MTG Pocket” operating instructions can be viewed from the application’s help file and on the following PLUS website:

[http://www.plus-vision.com/en/product/mtg\\_pocket/](http://www.plus-vision.com/en/product/mtg_pocket/)

This manual also includes instructions on remote control of the copyboard with a web browser on a computer (with built-in wireless LAN function).

## Cautions on security with wireless LANs

For information on security when using wireless LAN devices, refer to the wireless LAN device’s instructions.

With wireless LAN devices and wireless LAN access points, there is a risk that malicious third parties could intercept the radio waves and secretly view passwords, confidential information and other contents of communications.

Please note that PLUS will accept no responsibility whatsoever for any damages incurred from problems in security due to failure to take the necessary security measures or from circumstances that are unavoidable for reasons of the wireless LAN device’s specifications.

## Trademarks

- Microsoft, Windows and Internet Explorer are registered trademarks or trademarks of the Microsoft Corporation of the United States, in the United States and other countries.
- Safari, Apple, Mac OS and Macintosh are trademarks or registered trademarks of Apple Computer, Inc.
- iPhone, iPod touch and iPad are trademarks or registered trademarks of Apple, Inc.
- iOS is a trademark or registered trademark of Cisco Systems.
- Android, the Android logo and Android Market are trademarks or registered trademarks of Google Inc.
- Wi-Fi is a trademark or registered trademark of the Wi-Fi Alliance.
- EVERNOTE is a trademark or registered trademark of the Evernote Corporation of the United States.
- Dropbox is a trademark or registered trademark of Dropbox, Inc., of the United States.

Note that even if not specified, PLUS fully respects corporate and product trademarks.

Other product and company names included herein are registered trademarks or trademarks of their respective corporations.

## ■ Installation and Settings

### Step 1: Connecting the copyboard to a network providing wireless LAN access points (page 4)

Connect the copyboard to the same network (wired LAN hub) with the wireless LAN access points. For networks not providing wireless LAN access points, purchase a regular wireless LAN device.

### Step 2: Setting the network mode to “Public” at “CB Setup” (page 5)

Switching the copyboard’s setting to “Public” enables remote control of the copyboard using a wireless LAN.



#### Step 3-1: To use the “MTG Pocket” application (page 6)

Download the “MTG Pocket” application from a distributor and install it. The “MTG Pocket” application is used with the smartphone and wireless LAN access point.

#### Step 3-2: To use a web browser on a computer (page 10)

Open the web browser on the computer to run the copyboard remotely. A computer with built-in wireless LAN or a commercially available wireless LAN adapter is required.

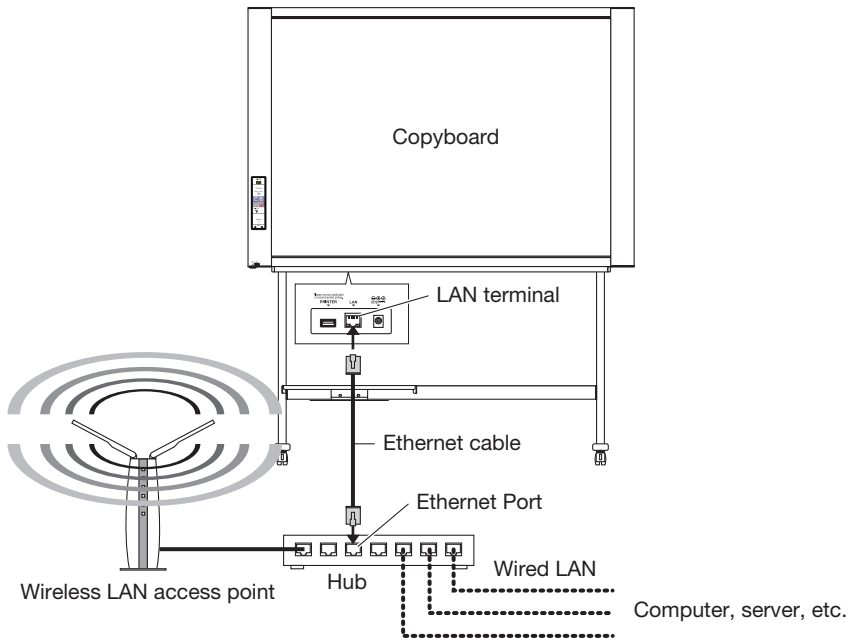
## ■ Operating Environment

Copyboard	Model name	N-20 series, C-20 series, N-204 series, F-20 series
	Firmware	Wireless LAN-compatible firmware
Network	Wireless LAN access point	Commercially available Wireless LAN Routers
When using a smartphone	Application	“MTG Pocket” application
	Supported OS's	iOS 4 or later (iPhone 3GS or later/iPad) Android 2.3 or later
	Application distributor	iOS-compatible: App Store Android-compatible: Android Market (scheduled for release in late March 2012)
When using a computer	OS	Fully IBM PC/AT-compatible computer XP (Home Edition /Professional Edition Service Pack 2 or later /Vista 32-bit version /Windows 7 (32-bit/64-bit versions) or Apple Macintosh Mac OS X 10.5 or later
	Web browser	Windows Internet Explorer 8.0 or later Macintosh Safari 5 or later JavaScript Enable
	Peripherals	Computer with built-in wireless LAN function or wireless LAN adapter

NOTE : Not all operations are guaranteed even under the operating environments described above are met.

# Step 1

## Connecting the copyboard to a network providing wireless LAN access points



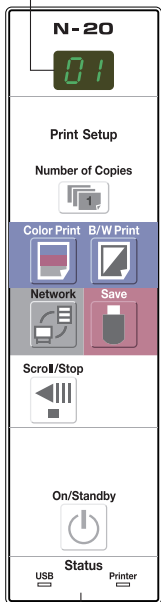
- Connect the LAN terminal on the copyboard's bottom panel with a LAN port on a wired LAN providing wireless LAN access points (hub, etc.). Use a commercially available 10Base-T or 100Base-TX straight cable.
- If the wired LAN does not provide wireless LAN access points, connect a commercially available Wireless LAN Routers to the wired LAN. For instructions on connecting and setting, see the respective user's manuals.

## Step 2 Setting the network mode to “Public” through “CB Setup”

Check that the copyboard’s power is turned on (that “01” is displayed on the display window).

- Once the CB Setup mode is set, the mode returns to the normal mode if no button is pressed for 10 seconds.

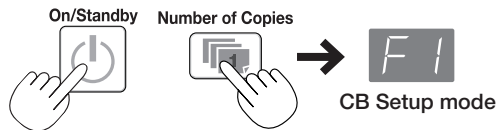
Display window



Status indicators

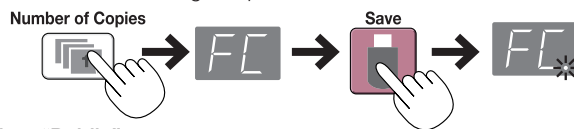
### 1. Switch to the CB Setup mode.

- While pressing the ON/Standby button, press the Number of Copies button, then release the ON/Standby button. The display window switches to “F1” (indicating the CB Setup mode).



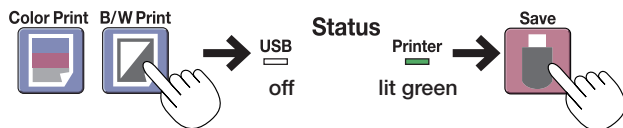
### 2. Switch the display to “FC” (network enabled mode).

- Press the Number of Copies button several times to select “FC”, then press the Save button to enter.
- When entered, a dot lights up as confirmation.



### 3. Select “Public”.

- Press the Color Print or B/W Print button several times so that the USB indicator is off and the Printer indicator is lit green, then press the Save button to enter.



- When the Save button is pressed, the copyboard system automatically reboots and the LEDs on the display window rotate. The display turns off once the setting is completed.

- When you switch to the public mode, the copyboard’s network settings are set as shown below. Change them as necessary.

IP address = 192.168.111.190

Subnet mask = 255.255.255.0

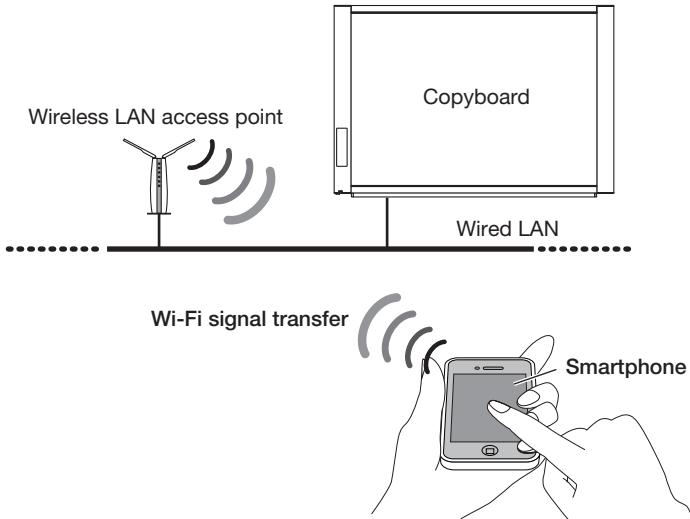
- To switch back to “Group”, set so that USB status indicator is lit green and the Printer indicator is off. For a description of the network mode, see “New Functions in the latest Firmware” on page 14.

This completes the settings.

## Step 3-1 To use the "MTG Pocket" application

The "MTG Pocket" smartphone application can be used to scan the copyboard's board surface remotely from the smartphone and capture the board data wirelessly into the application. Even writing, diagrams and other fine details on the board surface are stored in clear image files and can be checked using the "MTG Pocket" application. The stored board data can then be sent by e-mail, Evernote, Dropbox, etc.

\* Account registration, etc., is required to use Evernote and Dropbox. An Internet connection is also required.



### 1 Installing the "MTG Pocket" application on a smartphone (operations on the smartphone)

The following describes the procedure for iOS smartphones.

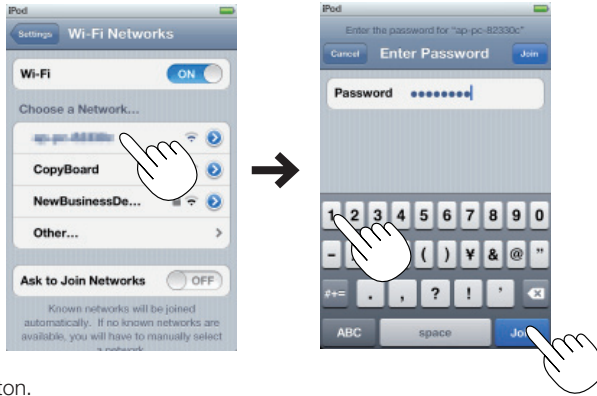
1. Tap the App Store icon on the home screen to open App Store, then tap the Search icon to display the character input field. Input the letters "MTG Pocket", then tap the Search icon.
2. Tap "MTG Pocket" on the search list, then tap the Free button. The Free button switches to the Install button.
3. Tap the Install button. Input your Apple ID and password. After several seconds, installation is completed and the "MTG Pocket" application's icon appears on the home screen.

\* An Apple ID must be registered to download.

### 2 Connecting the wireless LAN and smartphone (operations on the smartphone)

1. From the smartphone's home screen, tap Settings → Wi-Fi. If Wi-Fi is set to "Off", tap "Off" to switch it to "On". The names of connectable network are displayed.

2. Tap the wireless LAN access point's network name (SSID) and input the password.
  - Input the password and the WEP key, etc indicated on the wireless LAN device's rating sticker.
  - If a padlock icon is displayed, the encryption function is activated. Ask the network administrator to give you the wireless LAN access point's encryption type and code key.



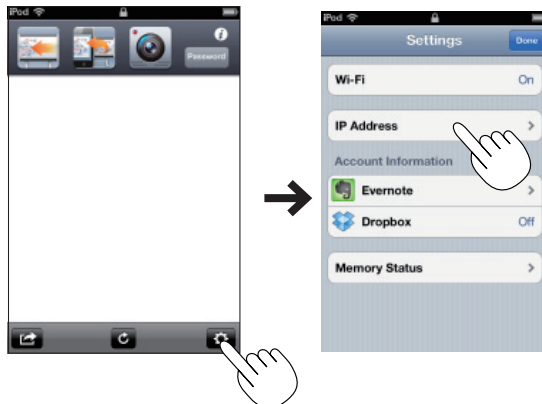
3. Tap the Join button.  
A check is placed next to the connected network name and the Wi-Fi icon appears at the top left of the screen.  
You are now connected.
4. Tap the Settings button to return to the settings menu.

### 3 Operating the “MTG Pocket” application (operations on the smartphone)

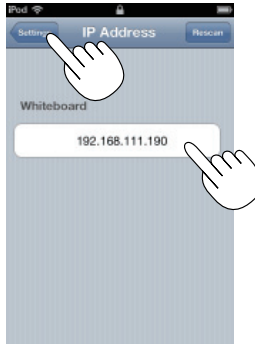
1. From the home screen, tap the MTG Pocket icon to open the MTG Pocket's home screen (hereafter referred to as the App Home Screen).



2. Tap the Settings icon to open the settings menu, then tap IP Address to search for the copyboard.



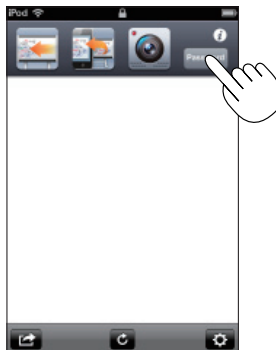
3. At the IP Address menu, tap the copyboard's IP address, then tap the Settings button.



4. On the Settings menu, tap the Done button to close the Settings menu.

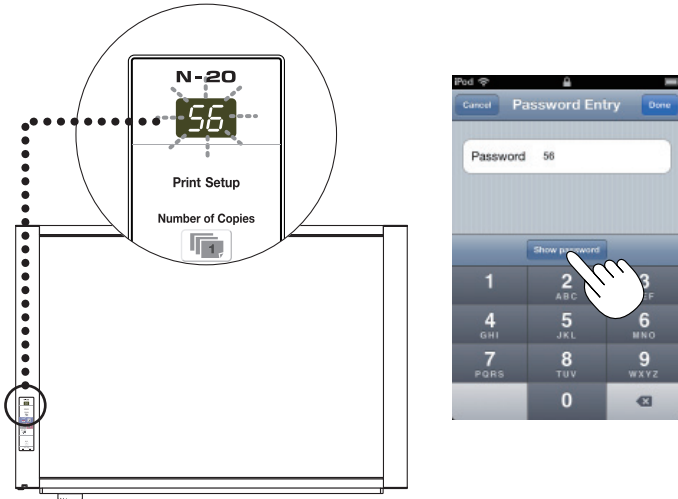


5. At the App Home Screen, tap the Password button to open the Password Entry menu.

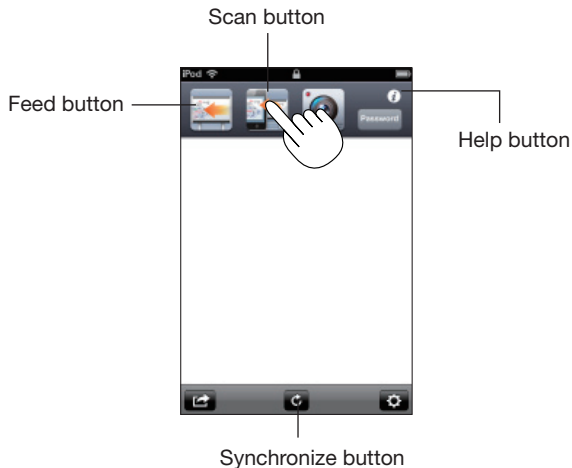




6. Tap the Show password button, input the 2-digit number flashing on the copyboard's display window, then tap the Done button.
- \* The password is changed automatically after a set amount of time (15 minutes by default). If "Password Error" is displayed during remote control of the copyboard, press the Show password button to recheck the password. The time after which the password changes can be changed at "Password Validity Period" in CB Setup. (See page 15.)



7. Tap the Scan, Feed and Synchronize buttons on the App Home Screen to operate the copyboard.

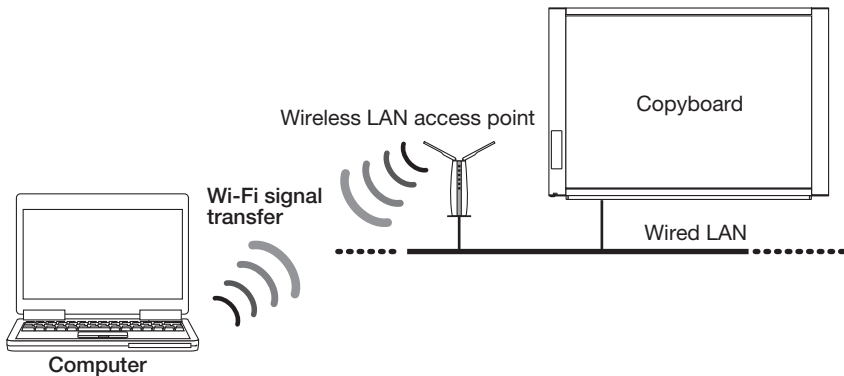


\* The "MTG Pocket" operating instructions can be viewed from the App Home Screen file and on the following PLUS website:

[http://www.plus-vision.com/en/product/mtg\\_pocket/](http://www.plus-vision.com/en/product/mtg_pocket/)

## Step 3-2 To use a web browser on a computer

A web browser on a computer can be used to scan the copyboard's board surface remotely and capture the board data wirelessly onto the computer.



### 1 Connecting the wireless LAN and computer (operations on the computer)

The following describes the procedure for Windows 7 on a computer equipped with a built-in wireless LAN function.

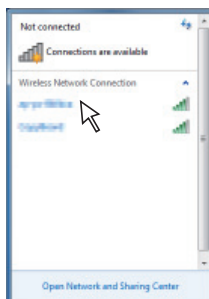
When using an external adapter, install the driver included with the adapter beforehand. For instructions on connections and settings, see the adapter's operating instructions.

1. Click the Internet access icon on the taskbar.
  - If no icon is displayed on the taskbar, it is in the notification area.



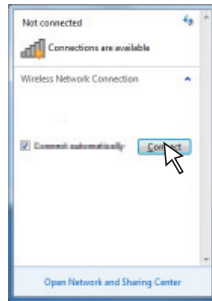
**Notice:** With Windows Vista, the “Connect to Network” screen is displayed by selecting [Start] → [Control Panel] → [Network Status and Task Display] → [Connect to Network]. Use the same procedure as described here to make this setting.

2. Click the SSID of the wireless LAN access point to which you want to connect.
  - The SSID is a number specific to a device, and is indicated on the wireless LAN access point device's seal.



3. Click the [Connect] button.

The “Connect to Network” screen appears and acquisition of the security information starts. Once this is completed, the security code entry screen appears.



4. Input the security code, then click [OK].

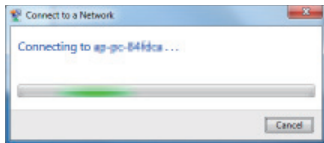
Depending on the wireless LAN access point device, a screen for inputting the PIN number may appear.

- The security code or PIN number is indicated on the wireless LAN device.



5. The “Connect to Network” screen appears and connecting starts.

Once the connection is established, the screen closes.

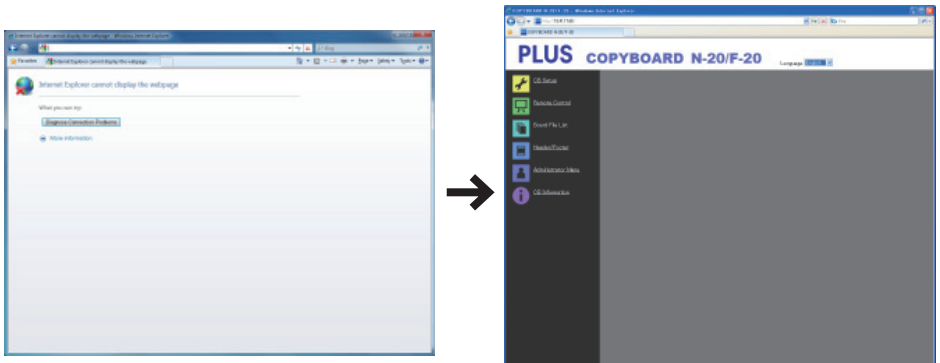


- If a screen for specifying the network location appears, select “Home Network”. If the home group screen appears, click the [Cancel] button.
  - Once set, the connection is subsequently made automatically.
- **To disconnect the Wi-Fi connection**

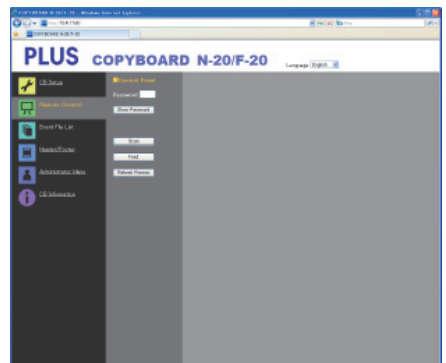
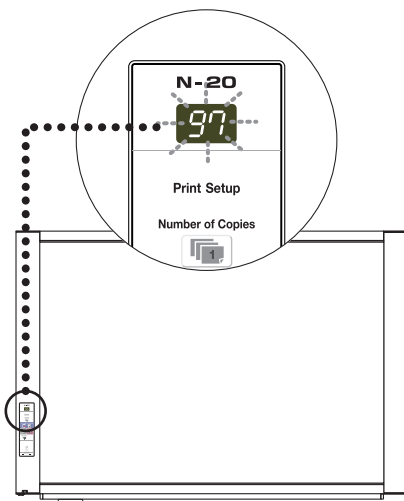
Click the Internet access icon to display the list of SSIDs, then right-click the appropriate SSID to display a pull-down menu. Click [Disconnect] to disconnect.

## 2 Controlling the copyboard remotely (operations on the computer)

1. Input the copyboard's IP address.  
Input `http://192.168.111.190` in the web browser's URL field, then press the [Enter] key on the computer.
  - Input numbers.
  - When the copyboard is connected, the top screen appears.



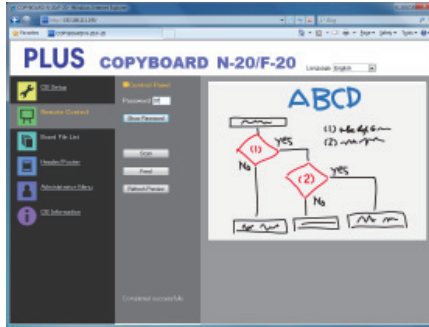
2. Click [Remote Control] on the menu to open the control panel.
3. Click the [Show Password] icon, then input the 2-digit number flashing on the copyboard's display window into the password field.
  - \* The password is changed automatically after a set amount of time (15 minutes by default).  
If "Please make a numeric entry for password" is displayed during remote control of the copyboard, press the [Show Password] button to recheck the password.  
The time after which the password changes changed at "Password Validity Period" in CB Setup. (See page 15.)



The copyboard can now be controlled remotely from the computer.

#### 4. Capturing the board data

- (1) Click the "Feed" button on the menu to move to the sheet surface to be captured to the front if necessary.
- (2) Click the "Scan" button on the menu to start scanning.  
Once scanning is completed, the data is sent to the computer and a preview screen appears. If reception of the image is interrupted due to signal conditions, check the reception mark on the computer and click the "Refresh Preview" button.
- (3) To save the image on the computer, right-click the preview screen and click [Save] on the pop-up menu.



#### Functions of control buttons

Button name	Description
Scan/Cancel	<ul style="list-style-type: none"> <li>• When the "Scan" button is clicked, the scanning operation starts on the copyboard. During scanning, the LEDs on the copyboard's display window rotate. Once they stop, the preview screen is displayed.</li> <li>• To save the scanned image on the computer, right-click the preview screen and click [Save]. The "Save as ..." screen appears. Save the image in the desired folder.</li> <li>• When the "Scan" button is clicked, it switches to the "Cancel" button. To cancel scanning, click the "Cancel" button.</li> </ul>
Feed/Cancel	<ul style="list-style-type: none"> <li>• When the "Feed" button is clicked, the sheet surface moves Forward by a panel.</li> <li>• Once the "Feed" button is clicked, it switches to the "Cancel" button. To cancel feeding, click the "Cancel" button.</li> </ul>
Refresh Preview	<ul style="list-style-type: none"> <li>• Refresh the Preview image with the latest scanned image saved in the copyboard.</li> </ul>

# Appendix: New Functions in the latest Firmware

The “Network Enabled” and “Password Validity Period” functions have been added to the latest copyboard firmware.

Here we only describe these newly added functions. Store this instruction in a safe place together with the copyboard’s user’s manual.

## ■ Network Enabled mode

### To set the Network Enabled mode using the copyboard’s control buttons

For the setting procedure, see “CB Setup (operating the copyboard’s buttons)” under “CB Setup and Network Setting Procedure” in the user’s manual.

#### ● Items added to the “Table of Function Numbers and Settings”

Function Number	Setting Item	Description	Setting	Status Indicators	
F <sub>7</sub>	Network Enabled mode	Selection of the network enabled mode. Group: Setting for storing data on the copyboard or FTP server Public: Setting for storing just single panel of data on the copyboard one at a time and acquiring it via a browser or smartphone application. * After the selection is made, the system reboots when the Save button is pressed.	Group (Default)	USB ■ (Lit)	Printer □ (Off)
		Public	USB □ (Off)	Printer ■ (Lit)	

### To set the Network Enabled mode using a web browser

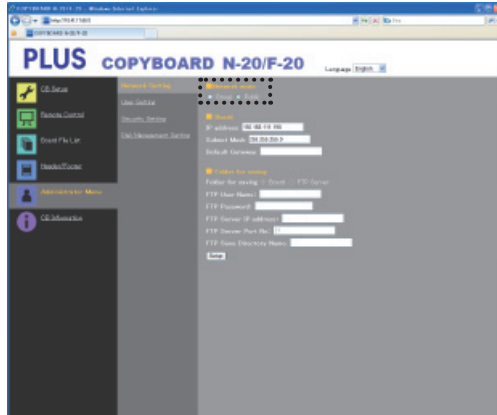
For the setting procedure, see “Making Detailed Settings (via LAN)” under “CB Setup and Network Setting Procedure” in the user’s manual.

#### ● Items added to “Network Setting”

Network Setting Item	Setting/Description	Default
Network Enabled mode	Selection of the network enabled mode. Group: Setting for storing data on the copyboard or FTP server Public: Setting for storing just single panel of data on the copyboard one at a time and acquiring it via a browser or smartphone application. * After the selection is made, the system reboots when the Save button is pressed.	Group

### Important Notice

- When you switch to the public mode, the copyboard’s network settings are set as shown below. Change them as necessary.  
IP Address = 192.168.111.190  
Subnet Mask = 255.255.255.0
- When “Setup” is pressed after choosing Public in Network Enabled Mode hollwing pop up menu will apper asking if you will erase the screen data.

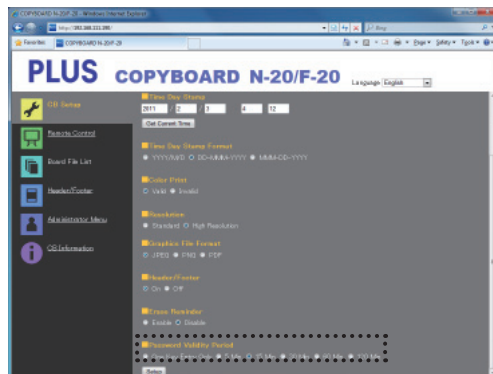


## ■ Password validity period

For the setting procedure, see “Making Detailed Settings (via LAN)” under “CB Setup and Network Setting Procedure” in the user’s manual.

### ● Items added to “CB Setup”

Copyboard setting item	Setting/Description	Default
Password Validity Period	<ul style="list-style-type: none"> <li>This sets the time for which the password is valid when in the public mode. The password is issued or shown when the Show password button on the smartphone application or web browser is pressed, at which time the password is displayed on the display window on the copyboard’s control panel.</li> <li>When set to “One Key Entry Only”, only one command is only accepted once after the password is issued. To perform remote control again, issue a new password by pressing the Show password button.</li> </ul>	15 minutes



# PLUS Corporation

ISO 14001 certification.

©2012, PLUS Corporation

26-4657-12A