

PLUS

PLUS

PLUS Wireless Interactive Panel
UPIC



PLUS Wireless Interactive Panel

UPIC

Specifications

Model Name	UPIC-64M	UPIC-W72M	
Type of Installation	Magnet sheet type	Magnet sheet type	
External dimensions	W 52.4 x D 0.4 x H 39.2 inches W 1330 x D 11.3 x H 995 mm	W 64.2 x D 0.4 x H 42.1 inches W 1630 x D 11.3 x H 1070 mm	
Weight (Not including pen or accessories)	approx. 4.6 lb / 2.1 kg	approx. 6.2 lb / 2.8 kg	
Panel	Size	W 51.2 x H 38.4 inches / W 1300 x H 975 mm	
	Projection area size	64 inch (4:3) Max	
Digital pen	Reading system	Anoto pattern reading using Anoto pen	
	Model Name	ADP-301	
	Power Supply	AAA alkali battery (1.5V) x 1	
	Interface	Conforming to Bluetooth® 2.0 class	
	Main unit weight	Approx. 40g / 0.1 lb (including battery)	
Usage Conditions	Operating time	During continuous drawing - approx. 5 hours; In standby - approx. 150 hours (with cap removed)	
	Temperature	0°C ~ 40°C	
Interactive Mode	Humidity	30 ~ 85% (with no condensation)	
	White screen mode	Yes	
	Overlay screen mode	Yes	
Whiteboard	Mouse mode	Yes	
	Functions	Pen color (8 colors) /Maker color (8 colors)/Eraser/Pen & eraser size selection/Insertion of pictures/Deleting of page contents/Screen mode selection/Printing/File input & output	
Accessories	Digital pen x 1, Stylus for digital pen x 1, AAA alkali battery (1.5V) x 1, Markers (Black and Red x 1), Eraser x 1, Carrying Case x 1, User's manual(simple) x 1,Manual for digital pen x1, CD-ROM (UPIC utility, UPIC Touch&Draw, User's manual(detailed)(PDF)) x 1		
Computer Requirements	Compatible Operating Systems	XP (Home Edition / Professional Edition Service Pack 3 or later)/Vista 32bit/64bit / Winows 7 32bit/64bit	
	Compatible computer types	Preinstalled models operating on one of the operating system above	
	CPU	Pentium 4 processor or later	
	Memory	512MB or greater	
	Hard disk	200MB or greater	
	Display resolution	1024 x 768 pixels or greater, High Color or greater	
	Devices	Bluetooth® adapter, standard computer USB port, CD-ROM drive	
	Compatible Bluetooth® stacks	Microsoft® Bluetooth® stack Broadcom's Widcomm® Bluetooth® software stack Toshiba Bluetooth® stack BlueSoleil Bluetooth® stack	

UPIC wireless interactive panels feature Anoto functionality. Anoto trademarks are owned by Anoto Group and are used by PLUS Vision Corp. under license. Bluetooth is a registered trademark of Bluetooth SIG, Inc.

An entirely new type of flexible interactive board for education and business.



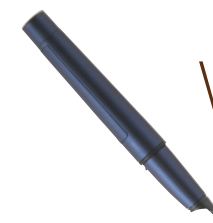
Turn any blackboard or whiteboard into an interactive solution!

Touchboards

205 Westwood Ave, Long Branch, NJ 07740
Phone: 866-94 BOARDS (26273) / (732)-222-1511
Fax: (732)-222-7088 | E-mail: sales@touchboards.com

PLUS Corporation of America

9610 SW SUNSHINE CT.
SUITE 100
BEAVERTON, OR 97005
800-211-9001 • 503-748-8700
www.plus-america.com



Wireless | Bluetooth® technology

Ultra-Portable | Roll-up Design

magnetic backing

Portable & Wireless

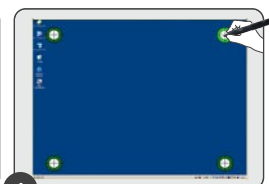
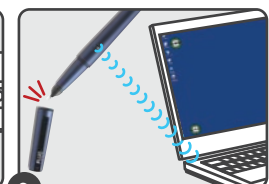
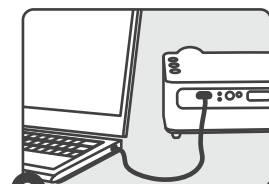
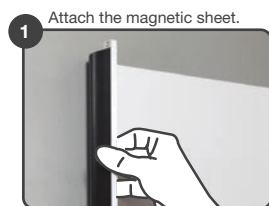
These features combine to make the UPIC not only unique, but also one of the most versatile products on the market.

Turn any chalkboard or whiteboard into an interactive board – instantly!

Magnetically attach the board directly over your existing chalkboard, whiteboard, etc. There is no need for expensive installation.

Extremely easy set-up.

You don't actually install the UPIC, you simply – and very quickly – set it up whenever and wherever you want. Just unroll the sheet against any surface to which a magnet may be adhered: a chalkboard, a whiteboard, a steel wall, etc. This is easily done by one person. After that, you only need to start your computer and projector, remove the digital pen's cap, tap the four corners of the sheet to calibrate the projected image and, lastly, begin the UPIC software. You are now ready for your interactive meeting or lesson.



Wireless. Bluetooth® technology.

The panel does not require any power, therefore there is no power cord to connect . . . or to trip over.

The unique digital pen transmits information via Bluetooth. Simply pair the pen with your Bluetooth-enabled computer (or use the included Bluetooth USB dongle) and the UPIC panel becomes an interactive board.

Easy-to-use software. Intuitive icons.

The "Touch and Draw" software requires very little training to master. The tool bar icons are familiar and will be readily identifiable by anyone who has worked with similar technology.

The software allows the user to add comments and make annotations as well as insert graphics onto areas of the projected content. This type of visual communication – through drawings and graphics – allows the user to express themselves with greater clarity and more nuance than when simply speaking.

At the end of the presentation, you can save the digitally written comments along with the original projected image as a new digital image file

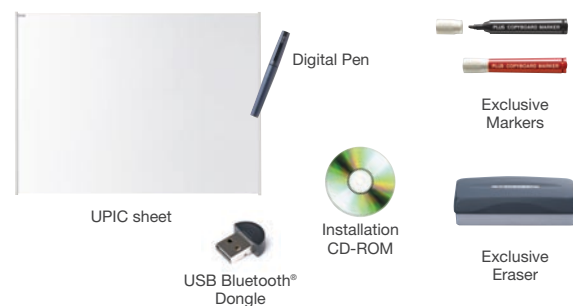


Everything fits neatly into the compact carrying case.

The UPIC and all of its accessories fit neatly into the provided carrying case. Set up an interactive classroom anywhere on campus or take your interactive meeting from city to city. The UPIC is a truly portable interactive solution.



Carrying Case

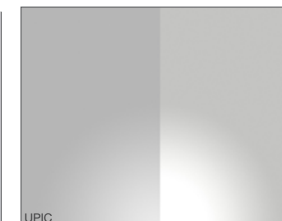


Three presentation tools in one!

Beyond the UPIC functioning as a interactive board, with the provided markers and eraser, you can write and erase on the panel just like when using a regular whiteboard. Furthermore, the UPIC can be used as a projection screen. Its unique surface minimizes the reflection and glare of a projector making viewing projected images more comfortable.

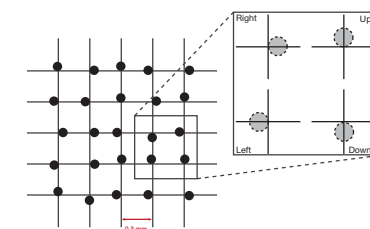


Use like a dry-erase whiteboard.



As a projection screen, the UPIC has less glare than conventional products.

Revolutionary technology.



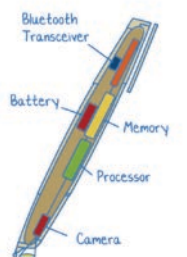
Dot matrix sheet.

To achieve the feat of digital writing, a patent-protected dot pattern from Anoto has been added to the UPIC writing surface. The pattern, almost invisible to the naked eye, consists of numerous intelligent small black dots that can be read by the unique digital pen. The pattern indicates the exact positions of the digital pen and the pen sends this information to your PC via Bluetooth.

The digital pen.

The pen contains an integrated digital camera, an advanced image microprocessor and a mobile communications device for wireless connection.

When you write over the projected image, the unique pen takes digital snapshots (more than 50 pictures per second) of the dot pattern on the UPIC writing surface. Every snapshot contains enough data to determine the exact position of the pen. The data is transferred via Bluetooth in real time to your computer which in turn projects the writing. This happens so quickly that it appears as if you are writing on the screen.



Economically priced.

The UPIC is less expensive than conventional interactive boards since the number of materials used in its construction are limited. Its reasonable price will fit into your increasingly tight budget.