

# AM50

Dual Arm Swingout Mount for Flat-Panel Displays up to 50 lb./23 kg

LIST \$175.00	Color: Silver
Weight	12.00 lb.   5.4 kg
Weight Capacity	50 lb.   22.7 kg
Width	8.88 in.   226 mm
Height	9.50 in.   241.3 mm
Depth	3.68 in.   93 mm
Mounting Pattern	75 x 75, 100 x 100, 200 x 100, 200 x 200 mm
Display Range	10.00 - 40.00 in
Tilt	+15.00° / -15.00°
Pivot	+15.00° / -15.00°
Rotation	+360°
Swivel	90°



50 lb.



+9.50



+15.00°  
-15.00°



4 in



75 x 75



100 x 100



200 x 100



200 x 200



10-40 in

[BID SPEC](#)



[Data Sheet](#)



[Bid Specification Document](#)



[Installation Manual](#)



[Dimensional Drawing](#)



[CAD File](#)



[High Resolution Image](#)

**BIM FILES**



[TXT file](#)

## DESCRIPTION

The AM50 is a dual arm swingout mount for flat-panel displays up to 50 lb./23 kg. Typically fits displays ranging from 10 - 40 in. or displays with a VESA mounting pattern of 75 x 75mm to 200 x 200mm. The AM50 allows up to 90° of swivel, 15° of tilt and extends 3.2 to 16.9 in. from the wall. It also offers significant tilt and pivot using the innovative Radial Glide™ system. OSHPD approved and UL listed.

## FEATURES

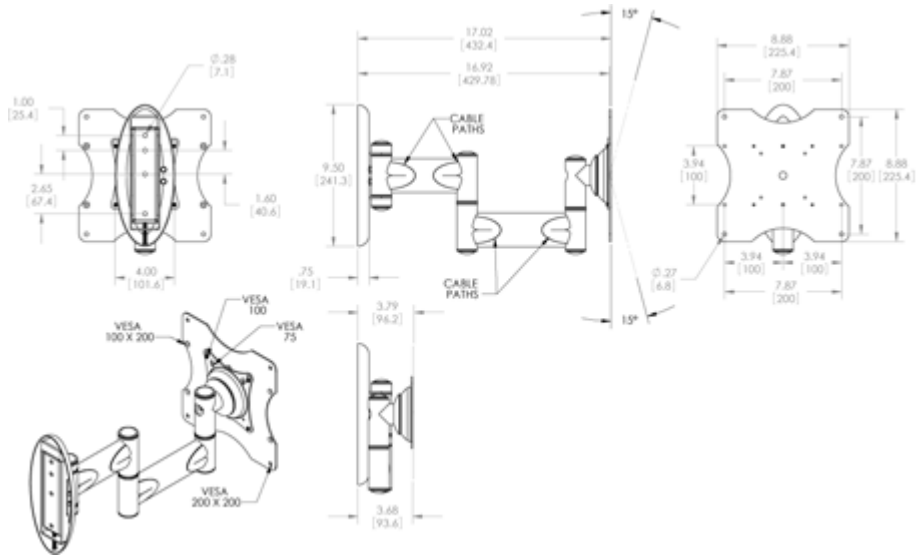
- Dual swingout arms extends 3.7 - 16.9 in. from the wall
- Quick, three-step installation
- Smooth tilt adjustment featuring Radial Glide™
- Cable routing inside arms
- OSHPD and DSA Approved (OPA-1684-07)



# AM50

Dual Arm Swingout Mount for Flat-Panel Displays up to 50 lb./23 kg

DOWNLOAD FULL SIZE CAD FILES AND DIMENSIONAL DRAWINGS AT MOUNTS.COM



## ACCESSORIES FOR AM50



### IPM-100

Protected Mounting Frame for iPads™ with VESA Mounting Pattern



### FPA

Rack Mount for Monitors and Flat-Panel Displays



### INW-AM200

Recessed Wall Mount for AM50



### IPM-200

Mounting Frame for iPads with VESA Mounting Pattern



### PSD-ACR18

18 inch Right-Angle Power Cord

## SIMILAR PRODUCTS



### AM50

Dual Arm Swingout Mount for Flat-Panel Displays up to 50 lb./23 kg



### FLIP-B

VESA Swingout Mount for Flat-Panels



### LPSA1530

Basic Series Articulating Mount for Flat-Panels up to 50 lb.



### AM300

Swingout Mount for Flat-Panels up to 300 lb./136 kg



### AM80

Dual Arm Swingout Mount for Flat-Panel Displays up to 80 lb./36 kg



### AM300-B

Swingout Mount for Flat-Panels up to 300 lb./136 kg

 **PREMIER MOUNTS**  
CREATING POSITIVE CUSTOMER EXPERIENCES

# Touchboards

205 Westwood Ave, Long Branch, NJ 07740  
Phone: 866-94 BOARDS (26273) / (732)-222-1511  
Fax: (732)-222-7088 | E-mail: sales@touchboards.com