







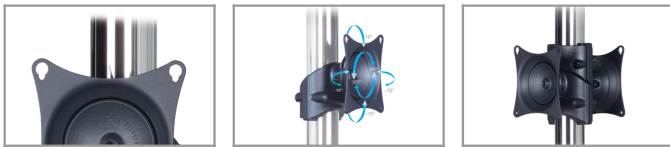


205 Westwood Ave, Long Branch, NJ 07740
 Phone: 866-94 BOARDS (26273) / (732)-222-1511
 Fax: (732)-222-7088 | E-mail: sales@touchboards.com

Color:	Black
Weight	7.00 lb. 3.2 kg
Weight Capacity	50 lb. 22.7 kg
Mounting Pattern	100 x 100, 100 x 200, 200 x 200 mm
Display Range	10.00 - 40.00 in
Tilt	+22.00° / -22.00°



-  50 lb.
-  +22.00°
-22.00°
-  100 x 100
-  100 x 200
-  200 x 200
-  10-40 in



DESCRIPTION

The universal VESA Pole Mount fits mounting patterns up to 200 x 200mm. Its Radial Glide feature offers up to 12 degrees of smooth pivot adjustment in any direction, and once the adjustment is complete, the display remains supported and in a fixed position. The angled shape of the VPM allows back-to-back mounting.

FEATURES

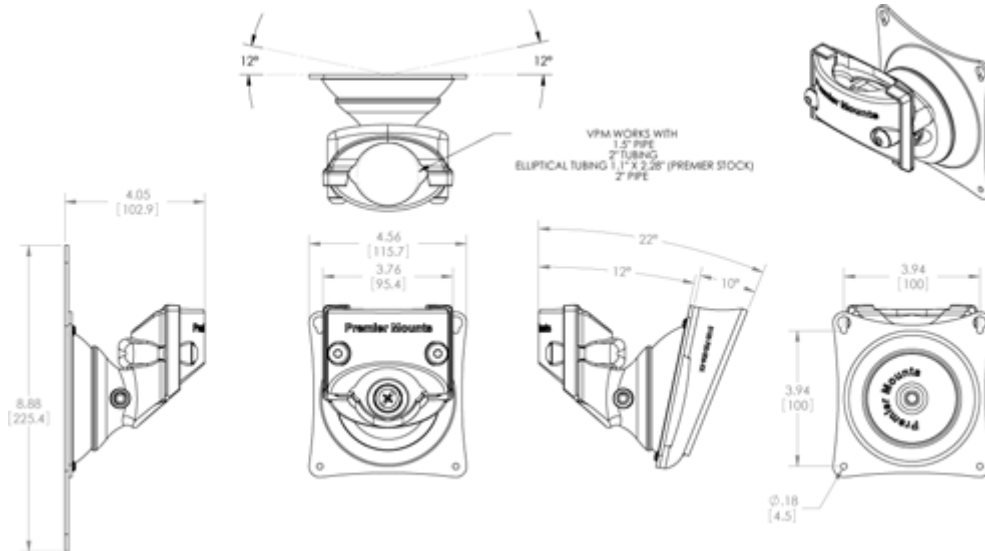
- Twelve degrees of omni-directional movement
- Perfect for mounting public view monitors
- Angled shape allows two VPMs to be mounted in a back-to-back position
- Mounts on poles and pipes with a diameter of up to 2 in.
- Heavy-duty design makes this mount ideal for security, rental and staging applications
- Includes both standard and Lock-It™ security hardware pack
- Includes 200 x 200 VESA adapter plate and tilt adapters that allow and additional 10° of tilt (22° total)



VPM

Universal VESA Pole Mount

DOWNLOAD FULL SIZE CAD FILES AND DIMENSIONAL DRAWINGS AT MOUNTS.COM



RELATED PRODUCTS FOR VPM



IPM-100

Protected Mounting Frame for iPads™ with VESA Mounting Pattern



AST-2446

Adjustable-Height Ceiling Adapter (24 - 46 in.)



AST-1321

Adjustable-Height Ceiling Adapter (13 in. - 21 in.)



PSP-60

Low-Profile Single-Pole Floor Stand with 60 in. Chrome Pole



MM-HP28

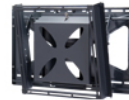
28" Single Pole W/ Grommet Base

SIMILAR PRODUCTS



VPM

Universal VESA Pole Mount



GB-MS2

Tilting Flat-Panels Mount for Displays up to 175 lb. and Integrated Storage



CTM-MS1

Tilting Mount for Flat-Panels up to 160 lb./73 kg



CTM-MS2

Tilting Mount for Flat-Panels up to 175 lb./79 kg



PCM-MS2

Tilting Flat-Panels Mount for Displays up to 175 lb./79 kg



PTM

Single stud Tilt and Pivot Mount for Flat-Panel up to 50 lb.

 **PREMIER MOUNTS**
CREATING POSITIVE CUSTOMER EXPERIENCES

Touchboards

205 Westwood Ave, Long Branch, NJ 07740
Phone: 866-94 BOARDS (26273) / (732)-222-1511
Fax: (732)-222-7088 | E-mail: sales@touchboards.com