

Student & Teacher Remote Specifications



Dimensions	4.9in x2in x.98in
Weight w/ batteries	4.3 oz.
Weight w/o batteries	2.6 oz.
Communication w/ receiver	2-way RF
System RF Frequency Range	2400-2483.5 MHz ISM/SRD
RF Transmission Distance	Up to 250 ft.
Operation Temperature	14 deg. F to + 122 deg. F
Relative Humidity	< 80%
Display Size	1.7in backlit LCD
Display Resolution	128x160 px (65k color)
Input	Full alpha-numeric character set
Power	2 AA Batteries
Laser Pointer	Built-in (Instructor unit only)
Wireless Mouse	Built-in w/ motion sensor (Instructor unit only)

USB Receiver Specifications



Dimensions (w/o antenna)	3.1in x.9in x.35in
Weight	1.0 oz.
Maximum number of units per receiver	1000
Connection	USB
Transmit Power	1 dbm

Design and specifications subject to change without notice.




QRF 900 Audience Response System



- Offline homework
- Ad-Hoc quiz capability
- On screen question display
- Large full color backlit display
- Laser pointer and mouse control
- Familiar cell phone style interface
- Audience response minus the computer
- Simplified student operation with automated login
- Alpha numeric: text, numbers, multiple choice, and true/false

Introducing the ALL NEW QClick QRF 900!

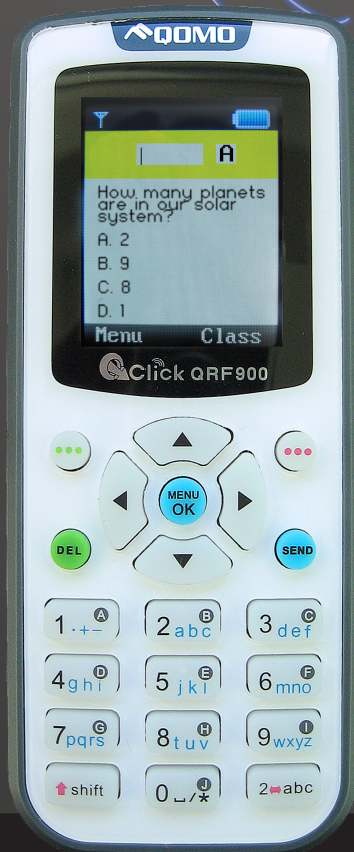
The QRF900's sleek design is easy to handle and extremely functional. Its full color backlit display is pleasant to the eyes and makes on screen information easy to read. Instructors will find the new QRF900 easy to use and the built in laser pointer and wireless mouse will allow the instructors to engage their students with dynamic training and testing.



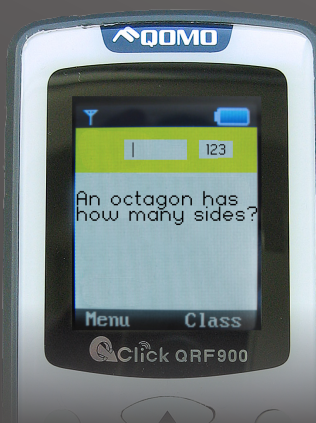
The teacher remote can directly communicate with student remotes without a computer via radio frequency.

Simplified for Students Questions right on their screen!

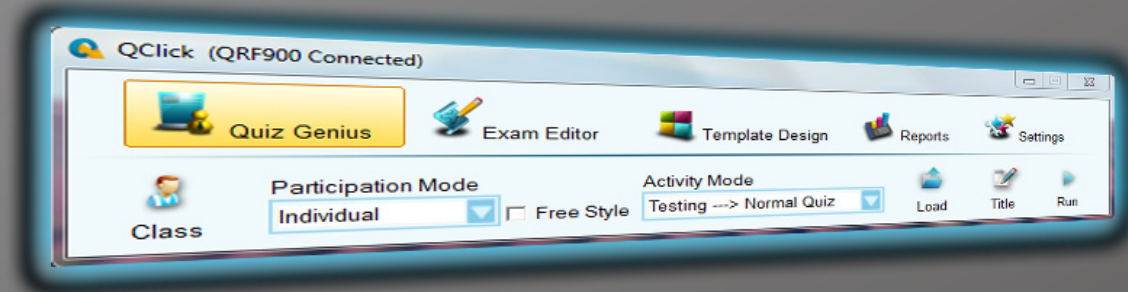
With questions on screen, teachers can send complete quizzes as homework to student remotes. Teachers can also create ad-hoc quizzes for their students on any content enabling spontaneous, interactive instruction.



Dynamic answering allows students to punch in alpha-numeric, multiple choice, and true/false answers. The familiar cell phone like interface is easy for students to navigate and makes homework fun!



Enhanced Software Features



The QClick software suite features modules to set up a class, create exams, manage hardware communication, take exams and produce reports. With one click, convert existing Power-Point presentations into a QClick exam. Choose between many different modes including standard quiz, homework, rush quiz, elimination, vote, ad-hoc, hand raise, and roll call. Save time and effort by seamlessly managing exams without making copies and tedious grade work.

- Instructors can easily measure student performance individually, by class, or by subject.
- Reports can be exported in various formats including Rich Text Format (RTF), PDF, and Excel. Reports include: tracking student progress, analysis per question, academic summary, and report card.
- Merge multiple sessions to allow testing of the same subject for different student groups.
- QClick software ensures data integrity and security.

Grade book reporting aggregates scores based upon defined terms and periods using numerical or letter grades. Customizable definitions such as grade book composition, weight factors, and more, provide instructors with the ability to create unique and specialized reporting options.

Student Grade Report

Class: Grade 2-1
Date: 4/22/2009
Subject: Language Arts
Teacher: Mrs. Miller
Session: Grade 2 English Reading

Report	Student ID	Student Name	Correct Ratio	Correct (%)	Total Points
	200902007	Danica Lewis	2/5	40	20
	200902008	Eugene Lopez	2/5	40	20
	200902015	Harry Brown	5/5	100	50
	200902014	Jim Green	4/5	80	40
	200902005	Joseph Garcia	2/5	40	20
	200902006	Kenneth Clark	1/5	20	10
	200902010	Lena Baker	3/5	60	30
	200902009	Lucy Nelson	4/5	80	40
	200902011	May Phillips	5/5	100	50
	200902003	Noah Martin	1/5	20	10
	200902004	Oliver Adams	3/5	60	30
	200902012	Patty Green	4/5	80	40
	200902002	Philip Thompson	3/5	60	30
	200902011	Ralph Walker	5/5	100	50
	200902013	Sylvester Carter	3/5	60	30

Created On: 2009-5-31
Page 1 of 1