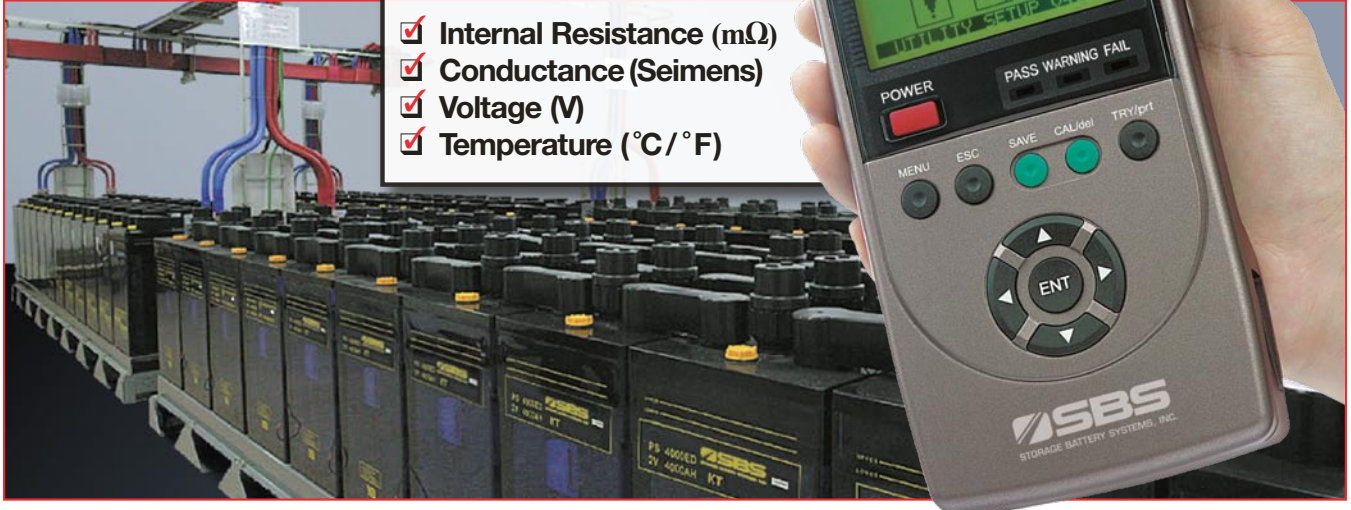


# IBEX

## SBS-IBEX Battery Diagnostic Tester

### SBS-IBEX Tests:

- ✓ Internal Resistance (mΩ)
- ✓ Conductance (Seimens)
- ✓ Voltage (V)
- ✓ Temperature (°C / °F)



The new IBEX is a cutting edge digital battery diagnostic tester meeting all IEEE Std. Recommended for all stationary applications such as telecommunications back up power, utility switching power, uninterruptible power systems (UPS) and more. SBS-IBEX is the only diagnostic tester to measure the accurate internal resistance (mΩ), Conductance (Seimens), Voltage (V) and Temperature (°C / °F) utilizing the world's first ripple-removing algorithm (KR PAT No. 0494489) within a short time (3 seconds or less) during floating charge.

### IBEX Advantages

- IBEX meets all IEEE Std. Recommendations for all stationary battery systems - CE Compliant.
- IBEX features a multiple built-in automatic measuring algorithm settings. Normal (less than 3 second measurements), Fine and Automatic.
- IBEX automatically measures and stores data through contact probes on the battery posts and is capable of measuring numerous cells quickly.
- IBEX can manage the measuring data of batteries in 15 different types of bank strings enabling effective data management, data transfer to PC and easy database operation.
- IBEX is the world's first compact and light weight tester (fits in the palm of your hand) for easy on-road measurements.
- The IBEX is user friendly displaying most memory items in icon form.
- The new IBEX measures the battery cell with a lower value of 0.5V and can also measure the intercell resistance easily and instantly.
- IBEX uses a Li-ion battery for maximum usage time (over 4 hours) and features enhanced durability with no moving parts.
- IBEX offers the most comprehensive diagnosis and reporting software package (Exmons Pro 2005/2008).

### IBEX Specifications and Characteristics

- **Exterior Size and Weight (Except the measuring lead)**  
3.75"W x 1.66"D x 6.9"H, Less than 1.4 lbs (including internal battery)
- **Measurement Ranges**  
10 Ah ~ 6000 Ah max., 0.1 Volt ~ 60.0 Volt DC Under 300 Hz
- **Measurement Accuracy**  
Voltage: + 0.5 class - Temperature: + 2 class (-20°C ~ +80°C)  
Impedance: + 1.0% rdg. + 8 dgt. (3milli ohm full-scale) across test range.
- **Resolution**  
Impedance: 0.001mΩ - DC Voltage: 10mV - Temperature: 0.5°C
- **User Programmable**  
Over / Under Voltage alarm setting, Fail / Warning Impedance alarm setting,  
Over Temperature alarm setting and Display menu
- **Storage**  
IBEX - 600 results  
ULTRA - 4,800 results
- **Other Available Functions**  
Auto scaling function, Zero point adjustment function, USB serial port and Measured data storage capacity: Choose from 15 different modes
- **Exmons Pro 2005/2008: Integrated diagnosis software of stationary applications**  
Database construction and control by site / bank / cell, 2D graph display of charges against basic value, 3D graph display of charges by period, Printing of data and analysis report including graph, Prohibition of data modification
- **Communication Protocol: Binary or Standard ASCII Text**
- **Format: Excel 2000/2002 and Windows 98/2000/XP Compatible**
- **Built-in Battery: Li-ion Battery (1950 mAh, 11.1V)**



**Ordering Information**

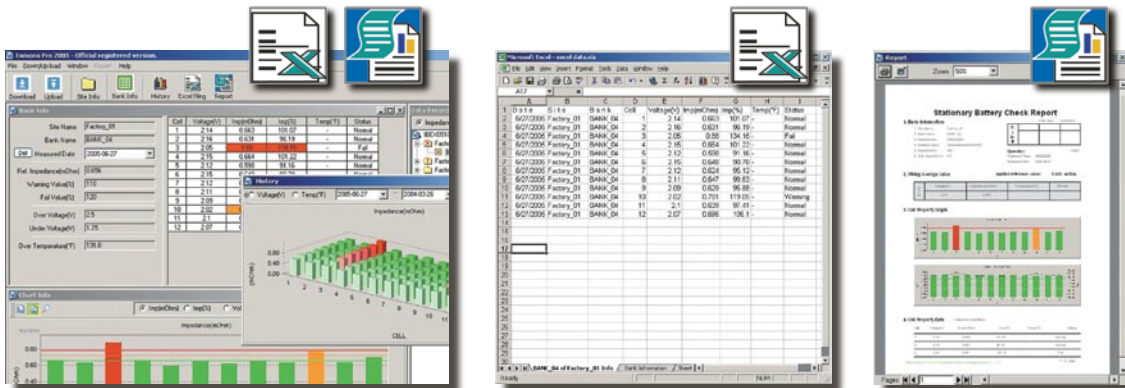
Part No.	Includes
<b>SBS-IBEX</b> *Stores 600 results*	IBEX (main body) & charger    4 point pin probe leads (+ spare pin set) Soft poly-vinyl bag            Clip type probe leads Li-ion battery pack & charger    Temperature probe IR thermal printer & charger    Exmons Pro 2005 software Printer paper roll                Shunt USB interface cable            User manual Spare fuses
<b>SBS-IBEX-ULTRA</b> *Stores 4,800 results*	Includes all items listed above PLUS: DC clamp meter Exmons Pro 2008 software for multi-user environment

**Accessory Ordering Information**

Part No.	Description
SBS-IBEX 4-Point	4-point pin probe leads
SBS-IBEX 4-Pin Set	Spare 4-point pin set
SBS-IBEX 2-Point	2-point pin probe leads (small battery applications)
SBS-IBEX Arm Rod	Extension rods for 2 or 4 point pin probe leads
SBS-IBEX Clip Probe	Clip type probe leads
SBS-IBEX Li-ion Battery	Spare Li-ion battery

**Exmons Pro 2005/2008 Diagnostic Software**

- Exmons is a comprehensive diagnosis software program developed to ensure the integrity of your backup batteries and power backup systems.
- A database is constructed from all measurements and can be easily stored and managed as a site-specific tree structure on your PC.
- Exmons provides handy information such as battery cell deterioration displayed on a range of graphs as well as various screen menus for highly user-friendly determination of battery aging status.
- Exmons features a bank specific report printout function freeing you from manual documentation for easy use of an analysis outcome.
- The measuring data can be saved as an excel file for easy data documentation.
- Trended battery measurement data can detect impending battery failures before a power backup system is affected and with enough advance time to replace failing batteries.



**Save Time And Money With Our Total Testing Package. Featuring The SBS-IBEX And SBS-2500.**