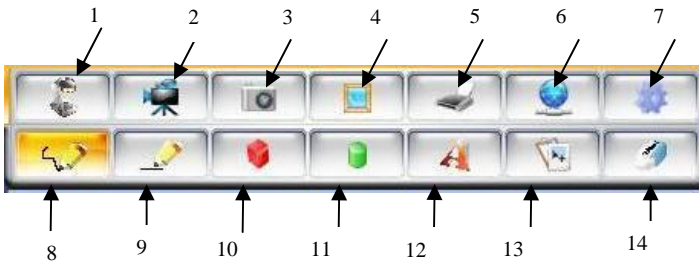


AVerVision 3 Software Quick Reference Guide (PC)



- | | | |
|-------------------|----------------------|--------------------|
| 1.DocCam Settings | 6. Network Settings | 11. Insert Ellipse |
| 2.Video Recording | 7. Advanced Settings | 12. Insert Text |
| 3. Image Capture | 8. Freehand Drawing | 13. Select & Paste |
| 4. Playback | 9. Insert Line | 14. Eraser |
| 5. Printer | 10. Insert Rectangle | |

Document Camera Settings

-To adjust, press “DocCam Settings” button on software control panel

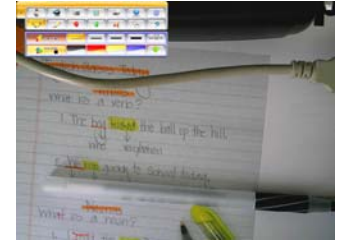
-Settings box will be displayed under control panel



* Auto Image and Image Enhance features are unavailable when using document camera model 300AF(+) or SPC300.

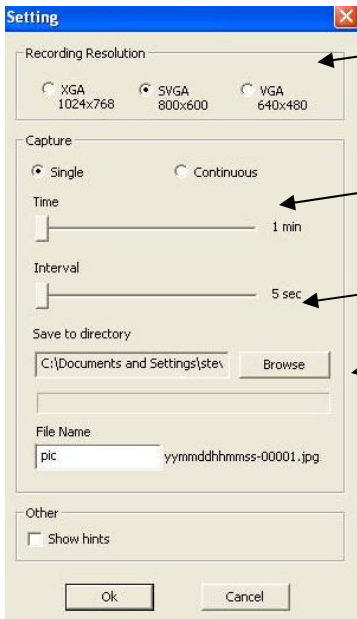
-**Image Pan** feature is accessed by hovering the mouse pointer over the bottom left portion of the video image screen.

-**Full screen** image can be minimized by hovering mouse pointer over top right corner of screen



Advanced Settings

-Settings such as video recording resolution and continuous still image capture can be adjusted under “Advanced Settings.”



Video clip file size and image quality is reduced by lowering resolution

Sets duration of continuous capture feature (1 min -72 hrs)

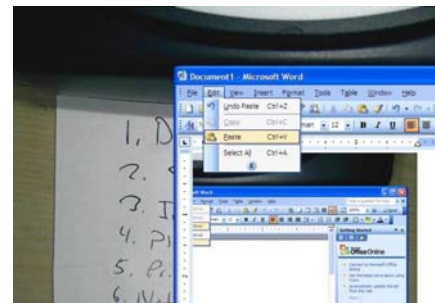
Adjusts time between pictures (5 sec – 1 min)

Select location for saved images

-Press “OK” to save continuous capture features and press “Image Capture” button on software control panel to activate feature.

Select & Paste

- This feature allows the user to quickly reproduce a section of the video image and paste it into a word processor or other program.
- Select desired area with mouse pointer and paste in word processor such as Microsoft Word. This is done by selecting Paste under Edit from the Menu bar or simply pressing Ctrl + V.



For more information on using AVerVision 3 software (PC), please visit the software training section of the CP300 training video at:

http://www.avermedia-usa.com/presentation/videos_training_cp300.asp

We make finding the Writeboard easy

TOUCHBOARDS
1-866-942-6273 .COM

205 Westwood Ave, Long Branch, NJ 07740
Phone: 866-94 BOARDS (26273) / (732)-222-1511
Fax: (732)-222-7088 | E-mail: sales@touchboards.com