

AVerVision CP300

Portable Document Camera

We make finding the
Writeboard easy

TOUCHBOARDS

1-866-942-6273 .COM

205 Westwood Ave, Long Branch, NJ 07740
Phone: 866-94 BOARDS (26273) / (732)-222-1511
Fax: (732)-222-7088 | E-mail: sales@touchboards.com



 folded view

Product Description

The new AVerVision CP300 Interactive Document Camera not only allows for the display of documents and objects on a large screen, but now includes the ability to connect all document cameras in one campus together through the existing Local Area Network, providing the ability for multiple classrooms, or even the entire school to view and share live document camera lessons and demonstrations. Document camera functions such as annotation, image capture, video recording, zoom, and more can also be controlled by each classroom accessing the demonstration on the network. Whether using the

AVerVision CP300 on the network or individually, the new software is complete with full annotation, video recording with audio, document camera controls, and more. These enhanced features make the AVerVision CP300 truly interactive and intuitive, whether in a single classroom, or campus-wide. The enhanced 3.2 mega pixel image sensor provides unmatched image clarity, while a variety of exclusive features and functions make the AVerVision CP300 a complete, interactive classroom presentation tool!

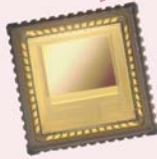
Feature Highlights

network sharing and annotation software



included enhanced annotation features with the ability to share live presentations over a local area network

enhanced image clarity



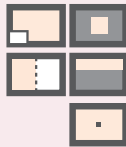
the 3.2 mega pixel sensor produces extremely clear images; however, updated hardware greatly enhances the clarity and sharpness, offering a better overall image

auto focus system



one-touch fast and accurate auto focus adjusts the image to provide the highest clarity in the shortest amount of time

advanced and exclusive presentation features



feature rich including laser positioning guides, picture-in-picture, split screen, AVer Box, AVer Visor, and annotation software

patented portable design



the all new design includes a strong and stable flexible neck, while the camera head can be locked to the side of the unit for safe storage and transfer

patented laser positioning guides

built-in flip over LED light with laser positioning guides



Product Specifications and Package Content

image sensor	1/2" CMOS color sensor	network sharing	yes, with AVerVision software
pixel count	3.2 mega pixel	light	yes, with laser guides
maximum output resolution	1280 x 720 WXGA	base light	optional
total zoom	16x	picture-in-picture	yes
XGA resolution output	n/a	split screen	horizontal / vertical
HD resolution output	n/a	AVer Presenter features	yes
AVERZOOM™	2x	effects	color / b&w / negative
digital zoom	8x	night view	yes
frame rate	24 fps (max)	text/graphic modes	yes, with hi frame
lens	F=3.0, fl=9.6mm	image rotation	0 / 180 degrees
focus	auto/manual	image freeze	yes
white balance and exposure	One-Touch control / manual	image mirror	yes
built-in memory	80 images	remote control	yes, with laser pointer
SD card slot	n/a	carrying bag	yes
vga input	yes, passthrough	dimensions	6.7" x 8.1" x 17.7" (set-up) 12.2" x 10.8" x 2" (folded)
vga output	yes	weight	5.3 lbs
dvi-i output	yes	power source	AC 100 to 240V, 50/60 Hz
video output	S-Video, composite	certifications	FCC, UL (power adapter)
audio in	no	warranty on main unit	5 year limited warranty including LED light. All warranty applies to parts & labor only.
audio out	no	warranty on accessories	1 year limited warranty
rs232	yes, with adapter	special warranty	1 year AVERCPR™
usb2.0 to pc port	yes	optional accessories	Microscope adapters (28mm and 34 mm), lightbox, carrying bag, anti-glare sheets
network ethernet port	no		
software (WIN and MAC)	yes, free updates via website		
image & video(with audio) recording	yes, with AVerVision software		
annotation	yes, with AVerVision software		